



The pragmatics of STAIRS

Paper by Ragnhild Kobro Runde, Øystein Haugen and Ketil Stølen

October 3, 2008

INF 5150



Today's topics

- Semantic model of STAIRS
 - weak sequencing
- Explain the practical relevance of STAIRS
- Illustrated by a running example
 - A system for booking appointments used by e.g. dentists
- Give guidelines on
 - the use of STAIRS operators (pragmatics of creating interactions)
 - alt versus xalt
 - guards
 - specifying negative behaviour (refuse, veto, assert)
 - seq
 - refinement (pragmatics of refining interactions)
- The tutorial can be found on the syllabus/achievement page for INF5150

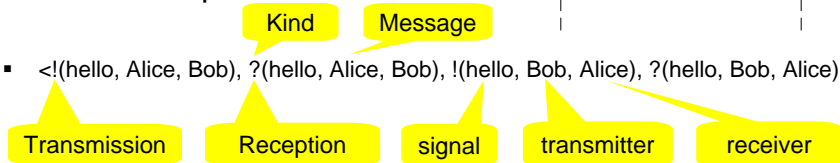
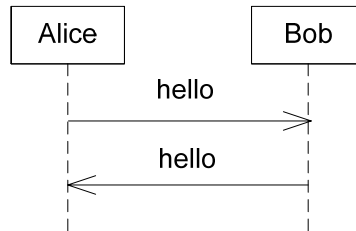
INF 5150





Semantic model of STAIRS

- Interaction
 - positive behaviours
 - negative behaviours
- Described formally by traces
- Trace = sequence of events
- $\langle!(\text{hello}, \text{Alice}, \text{Bob}), ?(\text{hello}, \text{Alice}, \text{Bob}), !(\text{hello}, \text{Bob}, \text{Alice}), ?(\text{hello}, \text{Bob}, \text{Alice})\rangle$
- Shorthand: $\langle!h, ?h, !h, ?h\rangle$
- Tip: Include transmitter and receiver to distinguish messages with the same signal



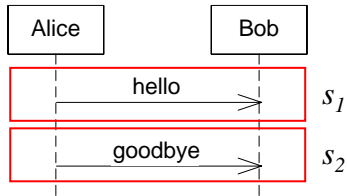
Weak sequencing

- Combine interaction fragments by seq
- Definition of weak sequencing of trace sets:
 - $s_1 \succcurlyeq s_2$ denotes the set of all traces that may be constructed by selecting one trace t_1 from s_1 and one trace t_2 from s_2 and combining them in such a way that for each lifeline, the events from t_1 comes before the events from t_2 .
- Note: if s_1 or s_2 is empty then $s_1 \succcurlyeq s_2$ is also empty
- Remember: if the message hello is sent from l_1 to l_2 , then the event !hello occurs on l_1 and ?hello occurs on l_2



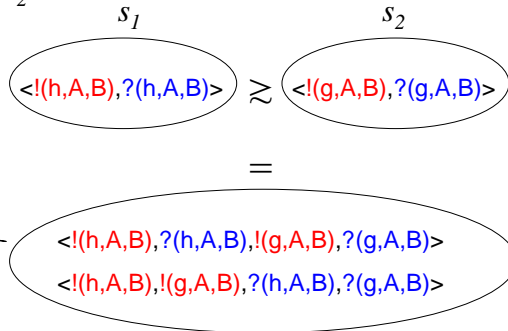


Weak sequencing of trace sets



Red events occur on Alice,
blue events on Bob

$s_1 \succcurlyeq s_2$ is the set of
positive traces for the
diagram



Weak sequencing of interaction obligations

- $(p_1, n_1) \succcurlyeq (p_2, n_2) \stackrel{\text{def}}{=} (p_1 \succcurlyeq p_2, (n_1 \succcurlyeq p_2) \cup (n_1 \succcurlyeq n_2) \cup (p_1 \succcurlyeq n_2))$
- Traces composed exclusively by positive traces become positive
- Traces composed with at least one negative trace become negative



Formal semantics of seq

- $[[d_1 \text{ seq } d_2]] \stackrel{\text{def}}{=} \{o_1 \succ o_2 \mid o_1 \in [[d_1]] \wedge o_2 \in [[d_2]]\}$
- seq is the implicit composition operator
- o_i is shorthand for (p_i, n_i)
- Note: For better readability we give the binary versions of the operators in this presentation. N-ary versions are used in the paper.



The pragmatics of creating interactions





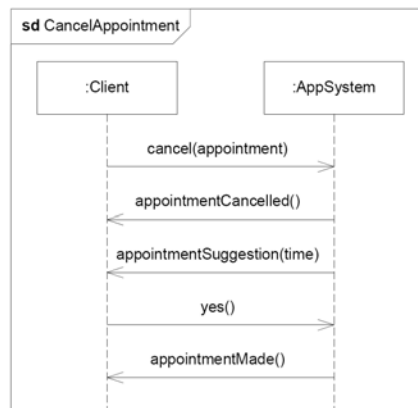
Example: an appointment system

- A system for booking appointments used by e.g. dentists
- Functionality:
 - MakeAppointment: The client may ask for an appointment
 - CancelAppointment: The client may cancel an appointment
 - Payment: The system may send an invoice message asking the client to pay for the previous or an unused appointment.
- The interactions specifying the system will be developed in a stepwise manner
- Steps will be shown to be valid refinement steps



xalt vs alt (1): CancelAppointment

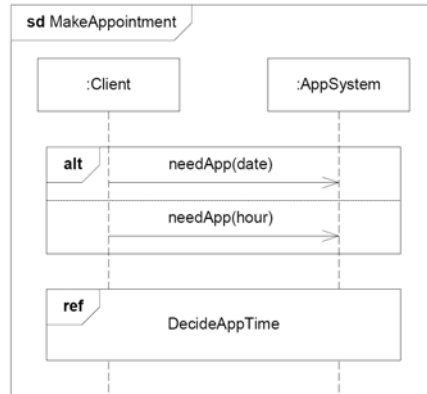
- This specification has two positive traces
- Whether reception of appointmentCancelled() occurs before or after sending of appointmentSuggestion(...) is not important
- Underspecification due to weak sequencing





xalt vs alt (2): MakeAppointment

- May ask for either a specific date or a specific hour of the day (e.g. in the lunch break)
- The system is not required to offer both alternatives
- Underspecification expressed by the alt operator

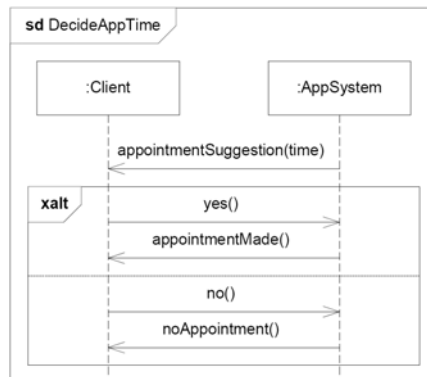


INF 5150



xalt vs alt (3): DecideAppTime

- The system must be able to handle *both* yes() and no() as reply messages from the client
- This is *not* underspecification
- Therefore the alternatives are expressed by the xalt operator



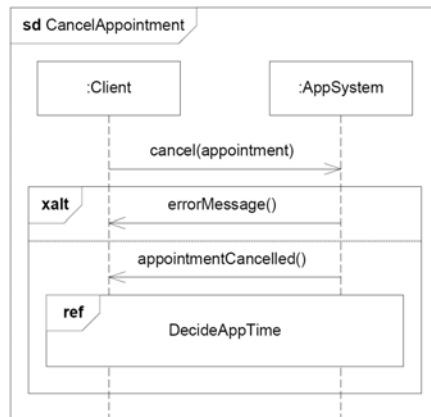
INF 5150





xalt vs alt (4): CancelAppointment

- The condition for choosing `errorMessage()` or `appointmentCancelled()` is not shown
- Both alternatives should be possible
- The choice is made by the system



xalt vs alt (5)

- A third use of xalt: to specify inherent nondeterminism
 - for example when specifying a coin toss
- The crucial question when specifying alternatives: Do these alternatives represent similar traces in the sense that implementing only one is sufficient?
 - if yes, use alt
 - otherwise, use xalt



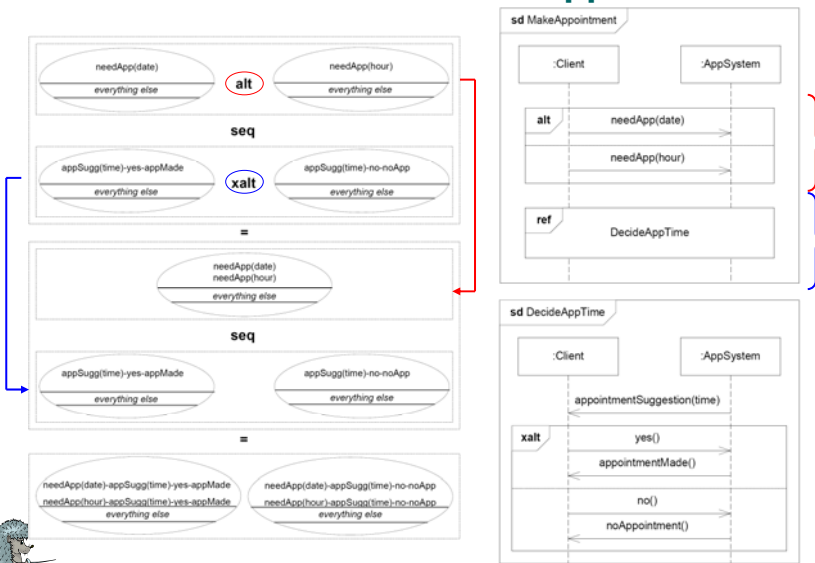


Formal semantics of alt and xalt

- Alt combines interaction obligations:
- $[[d_1 \text{ alt } d_2]] \stackrel{\text{def}}{=} \{o_1 \uplus o_2 \mid o_1 \in [[d_1]] \wedge o_2 \in [[d_2]]\}$
- Inner union of interaction obligations \uplus :
- $(p_1, n_1) \uplus (p_2, n_2) \stackrel{\text{def}}{=} (p_1 \cup p_2, n_1 \cup n_2)$
- Xalt results in distinct interaction obligations:
- $[[d_1 \text{ xalt } d_2]] \stackrel{\text{def}}{=} [[d_1]] \cup [[d_2]]$



Informal illustration of MakeAppointment





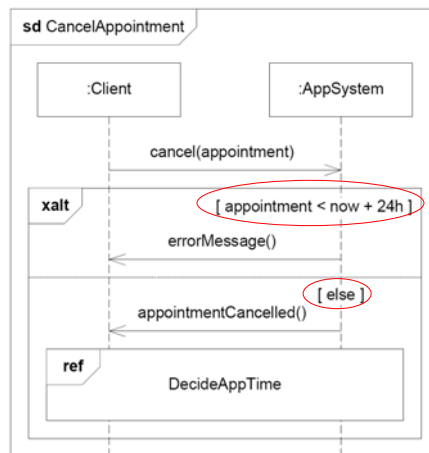
The pragmatics of alt vs xalt

- Use alt to specify alternatives that represent similar traces, i.e. to model
 - underspecification
- Use xalt to specify alternatives that must all be present in an implementation, i.e. to model
 - inherent nondeterminism, as in the specification of a coin toss
 - alternative traces due to different inputs that the system must be able to handle (as in DecideAppTime)
 - alternative traces where the conditions for these being positive are abstracted away (as in CancelAppointment on slide 12)



Guards (1)

- Guards may be used to express conditions for choosing between alternatives
- Here: an error message is sent if the client tries to cancel an appointment less than 24 hours before it is due





Guards (2)

- Semantically, a guard is represented by a special check-event
- The check-event ensures that for each operand to alt/xalt, its traces (including the check-event) become negative if the guard is false
 - otherwise they remain positive or negative as before
- Therefore the guard must be true in all possible situations in which the specified traces are positive
- An alt/xalt operand without a guard can be interpreted as having the guard \top (always true)
- More than one guard may be true at a time



Guards (3)

- If all guards are false, all described traces are negative
- In an alt-construct, make sure that the guards are exhaustive
- If doing nothing is valid, specify this by using the empty diagram, skip
- $[[\text{skip}]] \stackrel{\text{def}}{=} \{(\langle \rangle), \emptyset\}$
 - A single interaction obligation where only the empty trace $\langle \rangle$ is positive and the set of negative traces is empty





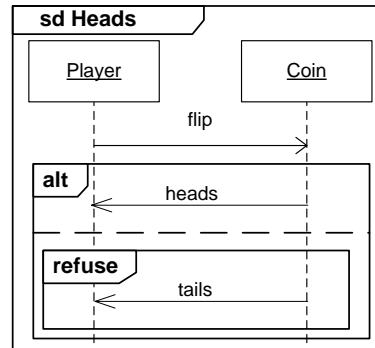
The pragmatics of guards

- Use guards in an alt/xalt construct to constrain the situations in which the different alternatives are positive
- Always make sure that for each alternative, the guard is sufficiently general to capture all possible situations in which the described traces are positive
- In an alt-construct, make sure that the guards are exhaustive



Specifying negative behaviour: refuse

- $[[\text{refuse } d]] \stackrel{\text{def}}{=} \{(\emptyset, p \cup n) \mid (p, n) \in [[d]]\}$
- All interaction obligations in $[[\text{refuse } d]]$ have empty positive sets
- This means that all interaction obligations in $[[d_1 \text{ seq } (\text{refuse } d_2)]]$ have empty positive sets
 - and the same applies to $[[\text{refuse } d_1 \text{ seq } d_2]]$



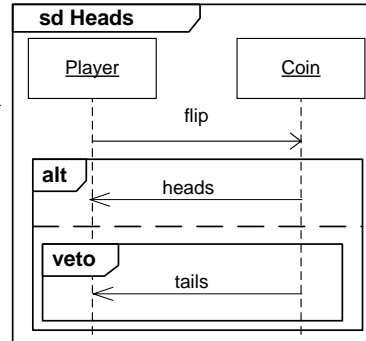
- $[[\text{Heads}]] = \{(\langle !f, ?f, !h, ?h \rangle, \langle !f, ?f, !t, ?t \rangle)\}$





Specifying negative behaviour: veto

- $[[\text{veto } d]] \stackrel{\text{def}}{=} [[\text{skip alt (refuse } d)]]$
- ... which means that $[[\text{veto } d]] = \{ \langle \langle \rangle \rangle, p \cup n \mid (p \cup n) \in [[d]] \}$

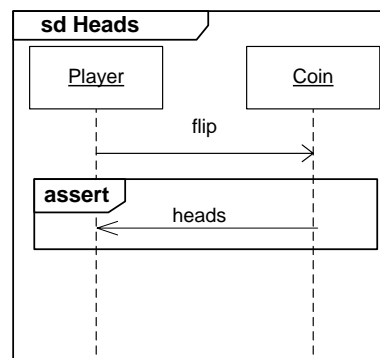


- $[[\text{Heads}]] = \{ \langle \langle !f, ?f, !h, ?h \rangle \rangle, \langle \langle !f, ?f \rangle \rangle, \langle \langle !f, ?f, !t, ?t \rangle \rangle \}$



Specifying negative behaviour : assert

- By using assert, all inconclusive traces are redefined as negative
- This ensures that for each interaction obligation, at least one of its positive traces will be implemented in the final implementation
- $[[\text{assert } d]] \stackrel{\text{def}}{=} \{ (p, n \cup (\mathcal{H} \setminus p)) \mid (p, n) \in [[d]] \}$



- $[[\text{Heads}]] = \{ \langle \langle !f, ?f, !h, ?h \rangle \rangle, n \}$
- $n =$ all traces where the first event on the lifeline of Player is $!f$ and the first event on the lifeline of Coin is $?f$ except the trace $\langle \langle !f, ?f, !h, ?h \rangle \rangle$





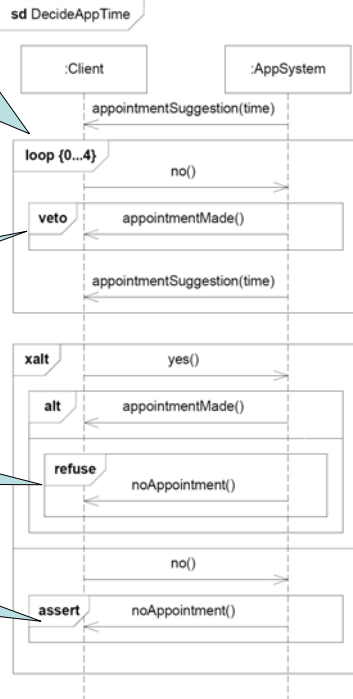
Negative behaviour

From 0 to 4 iterations (with seq between)

appointmentMade() may not occur here (veto=neg)

noAppointment() may not occur instead of appointmentMade() here

noAppointment () is the only message that may occur here

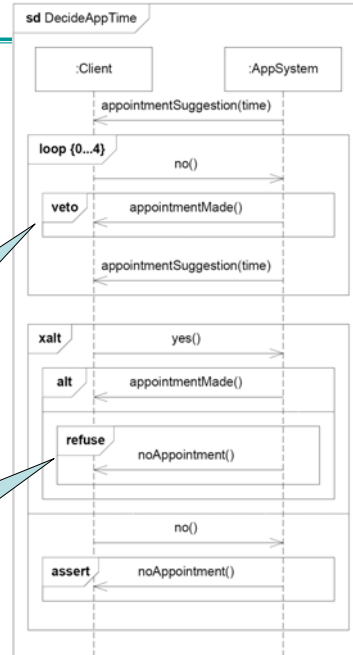


veto or refuse?

- Should doing nothing be possible in the otherwise negative situation?
 - If yes, use veto
 - If no, use refuse

It is OK to do nothing between no() and appointmentSuggestion(time)

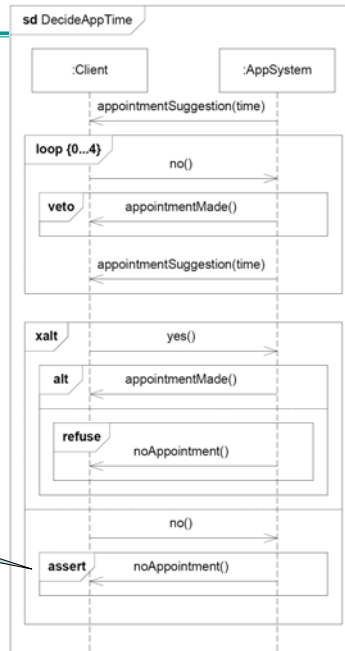
It is not OK to do nothing after yes()





when to use assert?

Sending noAppointment() is the only acceptable response to the no() message at this point



The pragmatics of negation

- To effectively constrain the implementation, the specification should include a reasonable set of negative traces
- Use refuse when specifying that one of the alternatives in an alt-construct represents negative traces
- Use veto when the empty trace (i.e. doing nothing) should be positive, as when specifying a negative message in an otherwise positive scenario
- Use assert on an interaction fragment when all positive traces for that fragment have been described
 - Use assert with caution!

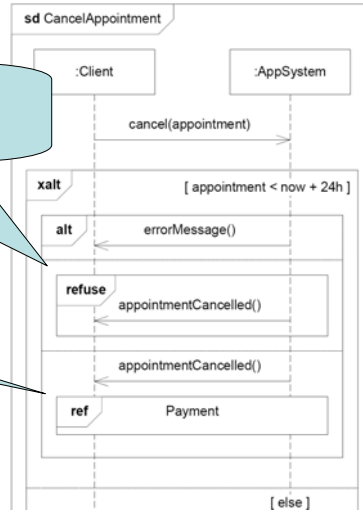


The use of seq

cancel(appointment) followed by appointmentCancelled() followed by nothing is negative

cancel(appointment) followed by appointmentCancelled() followed by the positive traces of Payment is positive

- A trace is not necessarily negative even if a prefix of it is negative
- The total trace must be considered when categorizing it as positive, negative or inconclusive



The pragmatics of weak sequencing

- Be aware that by weak sequencing
 - a positive sub-trace followed by a positive sub-trace is positive
 - a positive sub-trace followed by a negative sub-trace is negative
 - a negative sub-trace followed by a positive sub-trace is negative
 - a negative sub-trace followed by a negative sub-trace is negative
 - the remaining trace combinations are inconclusive

- Remember the definition:

$$(p_1, n_1) \succ (p_2, n_2) \stackrel{\text{def}}{=} (p_1 \succ p_2, (n_1 \succ p_2) \cup (n_1 \succ n_2) \cup (p_1 \succ n_2))$$





The pragmatics of refining interactions



The use of supplementing

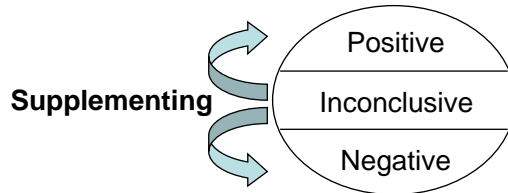
- Inconclusive trace are recategorized as either positive or negative (for an interaction obligation)
- New situations are considered
 - adding fault tolerance
 - new user requirements
 - ...
- Typically used in early phases





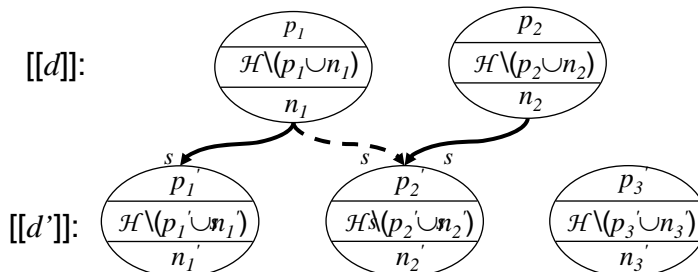
Supplementing of interaction obligations

- $(p, n) \rightsquigarrow_s (p', n') \stackrel{\text{def}}{=} p \subseteq p' \wedge n \subseteq n'$



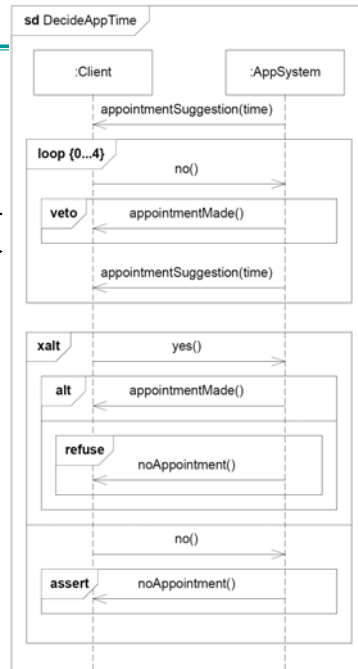
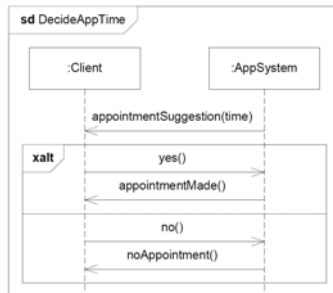
Supplementing of specifications



- $d \rightsquigarrow_s d' \stackrel{\text{def}}{=} \forall o \in [[d]]: \exists o' \in [[d']]: o \rightsquigarrow_s o'$
- d' is a supplementing of d if
 - for every interaction obligation o in $[[d]]$ there is at least one interaction obligation o' in $[[d']]$ such that o' is a supplementing of o





Example of supplementing



Positive 
Negative 



The pragmatics of supplementing

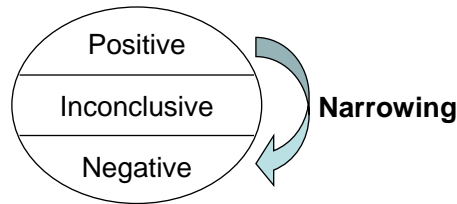
- Use supplementing to add positive or negative traces to the specification
- When supplementing, all of the original positive traces must remain positive, and all of the original negative traces must remain negative
- Do not use supplementing on the operand of an assert
 - no traces are inconclusive in the operand



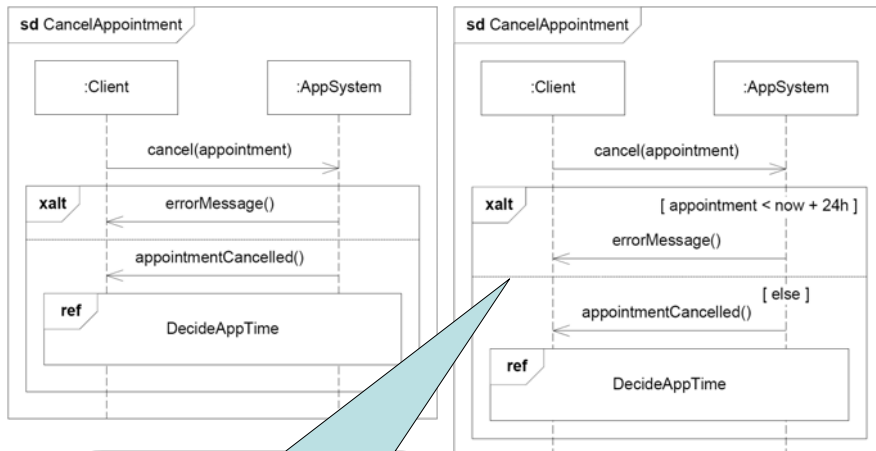


Narrowing

- Reduce underspecification by redefining positive traces as negative
- For example adding guards, or replacing a guard with a stronger one
 - traces where the guard is false become negative
- $(p,n) \rightsquigarrow_n (p',n') \stackrel{\text{def}}{=} p' \subseteq p \wedge n' = n \cup (p \setminus p')$
- $d \rightsquigarrow_n d' \stackrel{\text{def}}{=} \forall o \in [[d]]: \exists o' \in [[d']]: o \rightsquigarrow_n o'$



Example of narrowing



For each operand, traces where the guard is false become negative





The pragmatics of narrowing

- Use narrowing to remove underspecification by redefining positive traces as negative
- In cases of narrowing, all of the original negative traces must remain negative
- Guards may be added to an alt-construct as a legal narrowing step
- Guards may be added to an xalt-construct as a legal narrowing step
- Guards may be narrowed, i.e. the refined condition must imply the original one



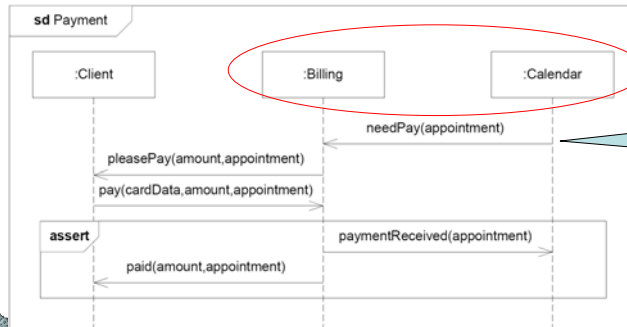
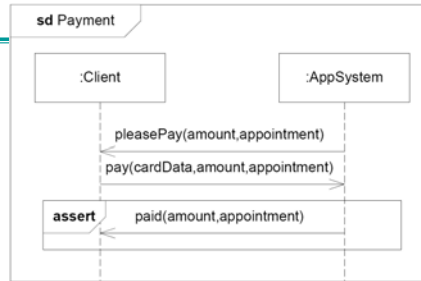
The use of detailing

- Reducing the level of abstraction by structural decomposition
 - One or more lifelines are decomposed
- The positive and the negative traces are the same, except that
 - internal communication is hidden at the abstract level
 - events occurring on a composed lifeline at the abstract level occur instead on one of the sub-component lifelines





Example of detailing



Components of AppSystem

Internal communication

INF 5150



Detailing

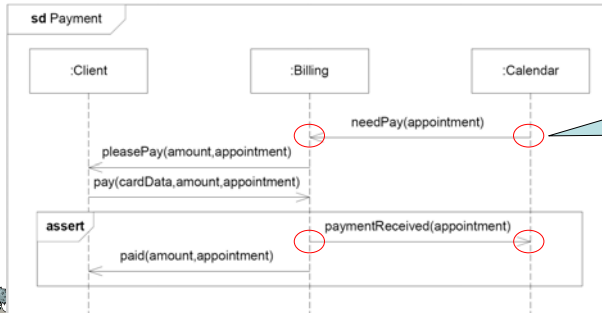
- L is a mapping that defines the translation from concrete to abstract lifelines
 - $L = \{ \text{Client} \rightarrow \text{Client}, \text{Billing} \rightarrow \text{AppSystem}, \text{Calendar} \rightarrow \text{AppSystem} \}$
 - This implies that Billing and Calendar are components of AppSystem
- $\text{subst}(t, L)$ is a function that substitutes lifelines in the trace t according to L
- $\text{abstr}(s, L, E)$ is an abstraction function that transforms a set of concrete traces s into a set of abstract traces
 - by removing all internal events (w.r.t. L) that are not in E
- E is a set of abstract events
 - Necessary to allow messages that an abstract lifeline sends to itself to be visible in the abstract diagram

INF 5150



Formal definition of detailing

- $(p, n) \rightsquigarrow_c^{L, E} (p', n') \stackrel{\text{def}}{=} p = \text{abstr}(p', L, E) \wedge n = \text{abstr}(n', L, E)$
- $d \rightsquigarrow_c^{L, E} d' \stackrel{\text{def}}{=} \forall o \in [[d]]: \exists o' \in [[d']]: o \rightsquigarrow_c^{L, E} o'$



Internal events not visible at the abstract level



The pragmatics of detailing

- Use detailing to increase the level of granularity of the specification by decomposing lifelines
- When detailing, document the decomposition by creating a mapping L from the concrete to the abstract lifelines
- When detailing, make sure that the refined traces are equal to the original ones when abstracting away internal communication and taking the lifeline mapping into account



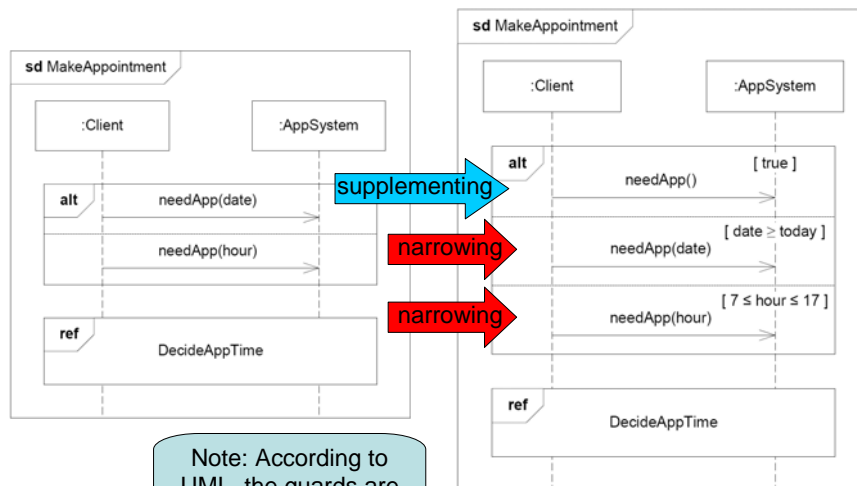


The use of general refinement

- A combination of supplementing, narrowing and detailing
 - (not necessarily all three)
- Allows all positive traces to become negative, while previously inconclusive traces become positive
- To ensure that a trace *must* be present in the final implementation we need an interaction obligation where all other traces are negative



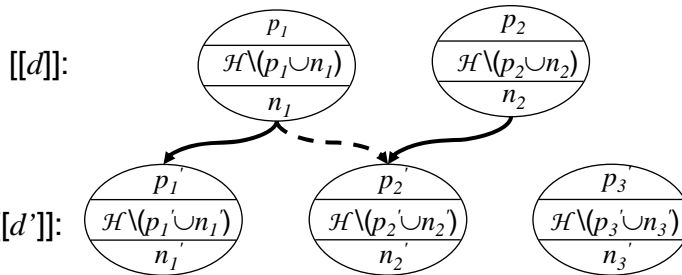
Example of general refinement





General refinement (of sets of interaction obligations)

- $d \rightsquigarrow d' \stackrel{\text{def}}{=} \forall o \in [[d]]: \exists o' \in [[d']]: o \rightsquigarrow o'$
- d' is a general refinement of d if
 - for every interaction obligation o in $[[d]]$ there is at least one interaction obligation o' in $[[d']]$ such that o' is a general refinement of o
- New interaction obligations may also be added
 - that do not refine any obligation at the abstract level



The pragmatics of general refinement

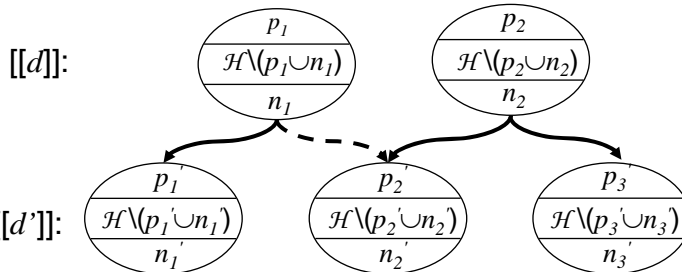
- Use general refinement to perform a combination of supplementing, narrowing and detailing in a single step
- To define that a particular trace *must* be present in an implementation use `xalt` and `assert` to characterize an obligation with this trace as the only positive one and all other traces as negative





Limited refinement

- Limits the possibility of adding new interaction obligations
- Typically used at a later stage
- d' is a limited refinement of d if
 - d' is a general refinement of d , and
 - every interaction obligation in $[[d']]$ is a general refinement of at least one interaction obligation in $[[d]]$



INF5150 INFUIT Haugen / Stølen

49

INF 5150



The pragmatics of limited refinement

- Use assert and switch to limited refinement in order to avoid fundamentally new traces being added to the specification
- To specify globally negative traces, define these as negative in all operands of xalt, and switch to limited refinement

INF5150 INFUIT Haugen / Stølen

50

INF 5150



Compositionality

- A refinement operator \rightsquigarrow is compositional if it is
 - reflexive: $d \rightsquigarrow d$
 - transitive: $d \rightsquigarrow d' \wedge d' \rightsquigarrow d'' \Rightarrow d \rightsquigarrow d''$
 - the operators refuse, veto, alt, xalt and seq are monotonic w.r.t. \rightsquigarrow :
 - $d \rightsquigarrow d' \Rightarrow \text{refuse } d \rightsquigarrow \text{refuse } d'$
 - $d \rightsquigarrow d' \Rightarrow \text{veto } d \rightsquigarrow \text{veto } d'$
 - $d_1 \rightsquigarrow d_1' \wedge d_2 \rightsquigarrow d_2' \Rightarrow d_1 \text{ alt } d_2 \rightsquigarrow d_1' \text{ alt } d_2'$
 - $d_1 \rightsquigarrow d_1' \wedge d_2 \rightsquigarrow d_2' \Rightarrow d_1 \text{ xalt } d_2 \rightsquigarrow d_1' \text{ xalt } d_2'$
 - $d_1 \rightsquigarrow d_1' \wedge d_2 \rightsquigarrow d_2' \Rightarrow d_1 \text{ seq } d_2 \rightsquigarrow d_1' \text{ seq } d_2'$
- Transitivity allows stepwise development
- Monotonicity allow different parts of the specification to be refined separately
- Supplementing, narrowing, detailing, general refinement and limited refinement are all compositional 😊

