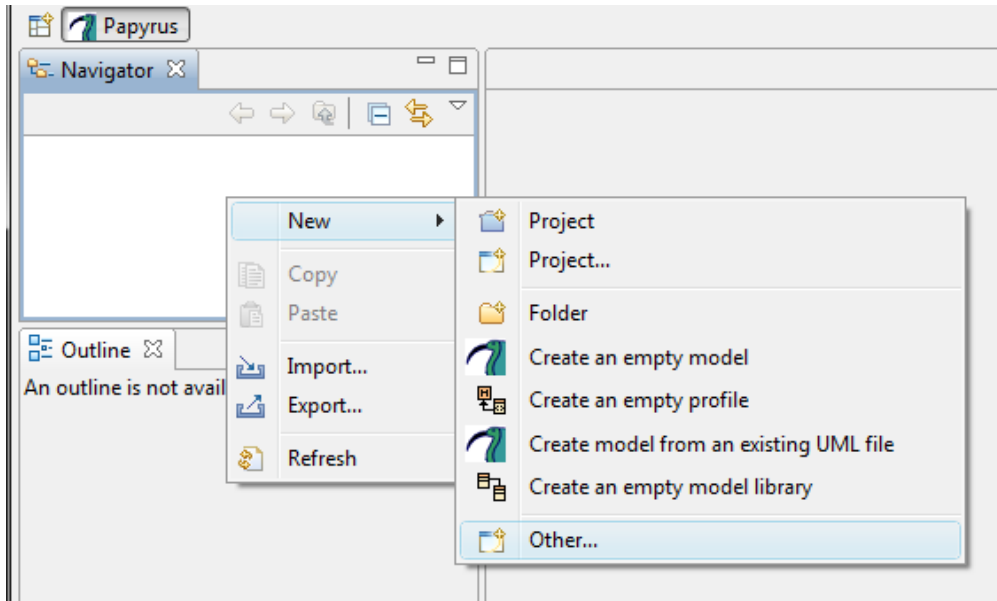
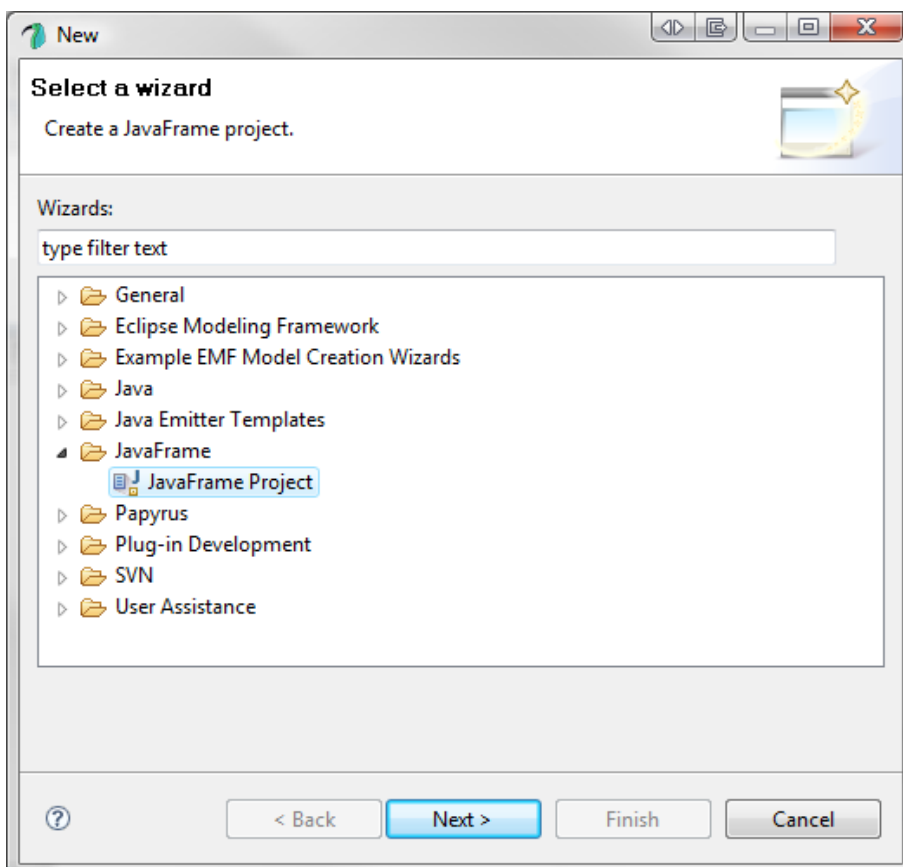


Transforming and executing ICU0

1. Create a JavaFrame Project:



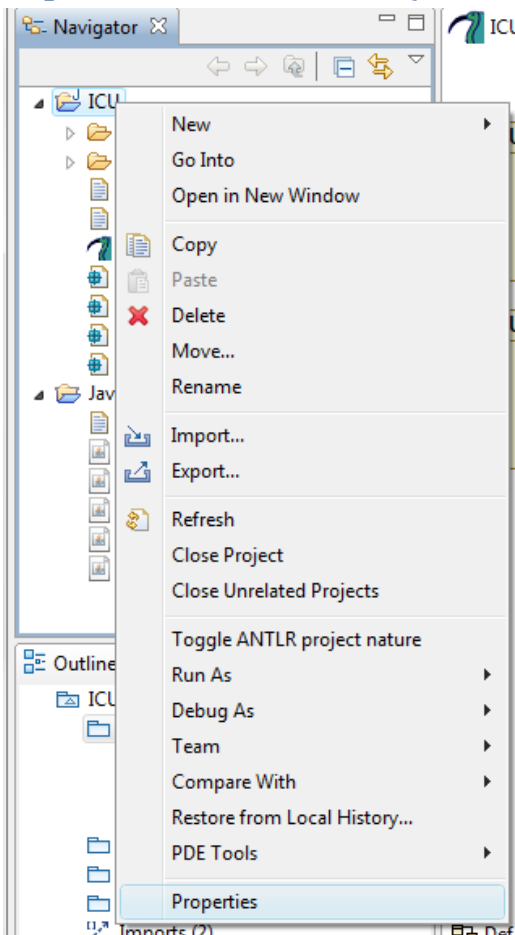
Right-click in the Navigator and select New -> Other...



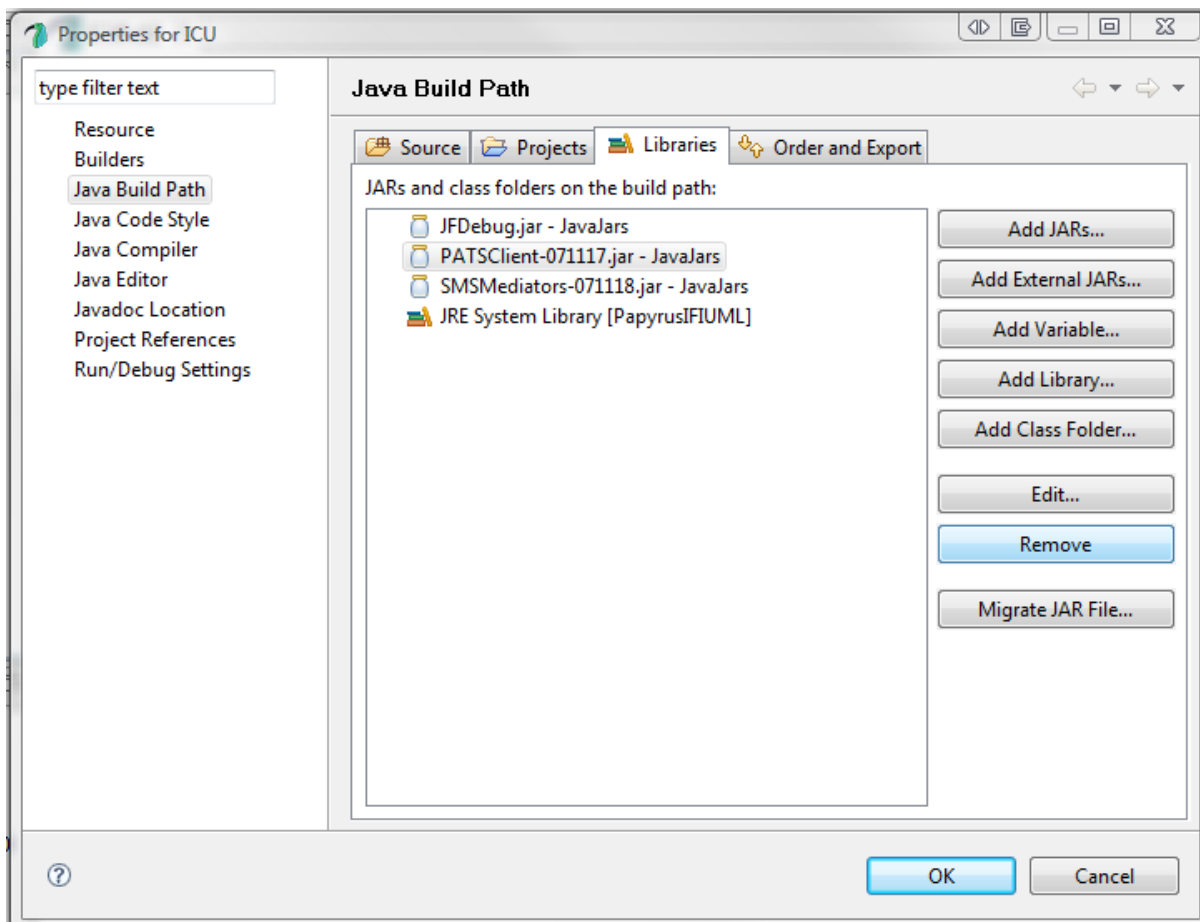
Expand JavaFrame -> Select JavaFrameProject -> Next

Name your new project something resonable (ICU).

2. Replace the PATScient (real PATS) resource JAR with fakePATS

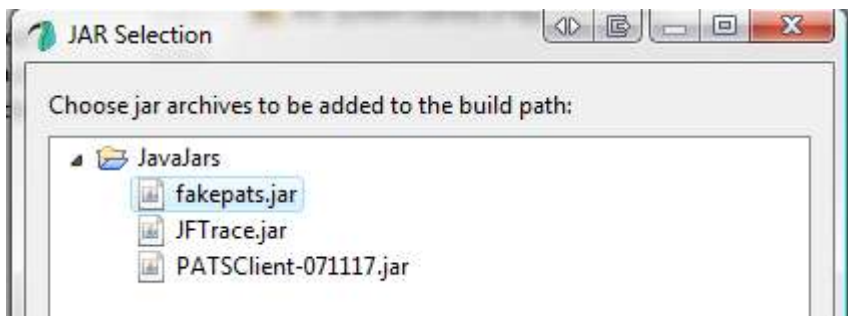


Right-click in the Navigator and select Properties.



Select Java Build Path -> Libraries -> Select PATScient...jar -> Remove

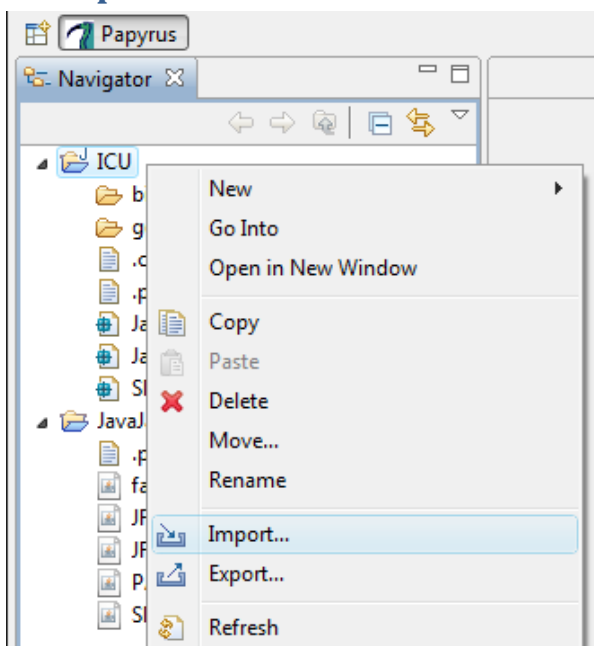
Click Add JARs...



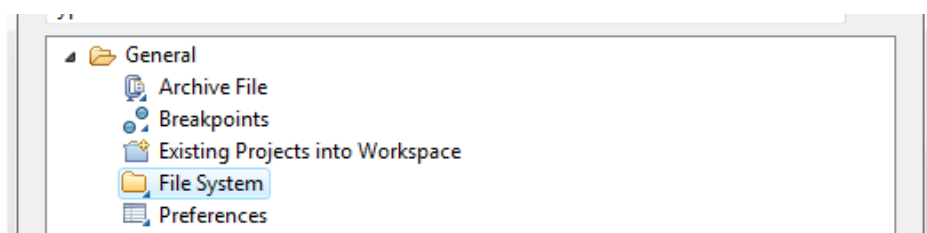
Expand JavaJars and select fakepats.jar

Click OK -> OK

3. Import ICU0



Right-click inside your Project in the Navigator and select Import.



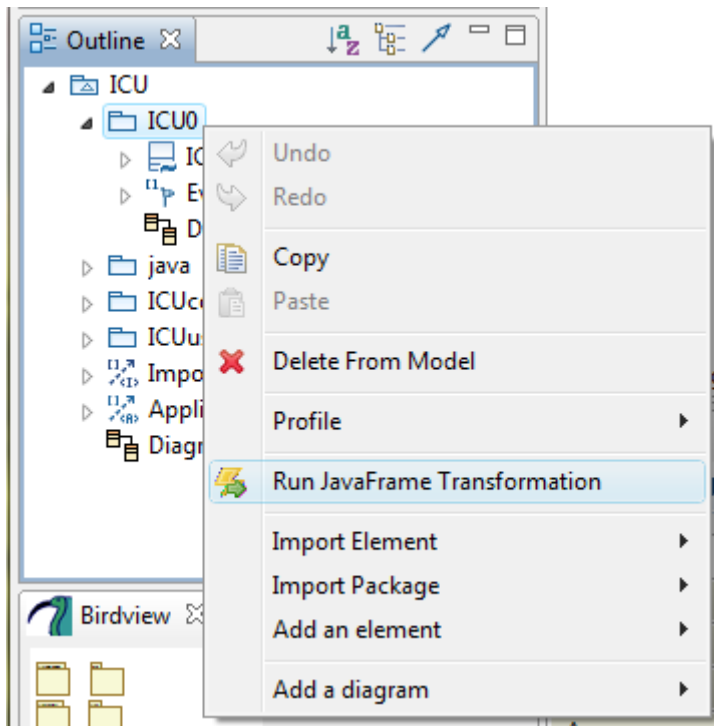
Expand General and select File System, click Next.



Navigate to where you have stored ICU0.di2 and ICU0.uml and select them both. Click Finish.

4. Transform ICU0

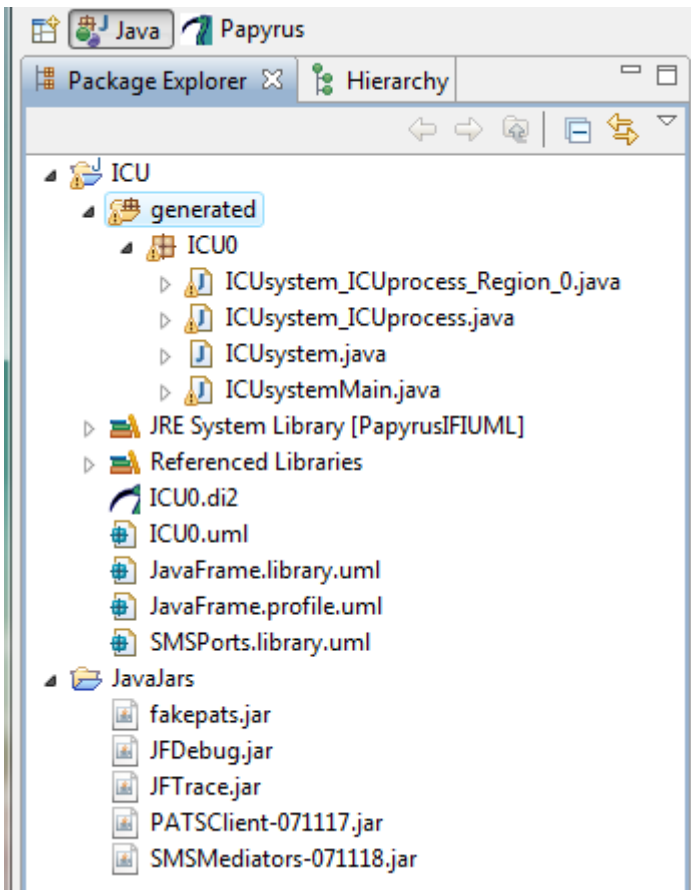
Open ICU0.di2



Right-click the ICU0 package and select Run JavaFrame Transformation.



Change your Perspective to the Java perspective.

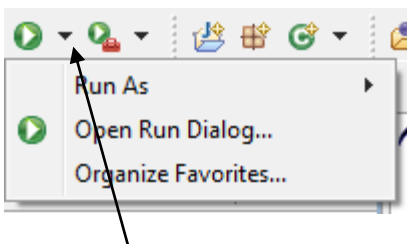


If the transformation has succeeded you should have 4 java-files in the generated source folder.

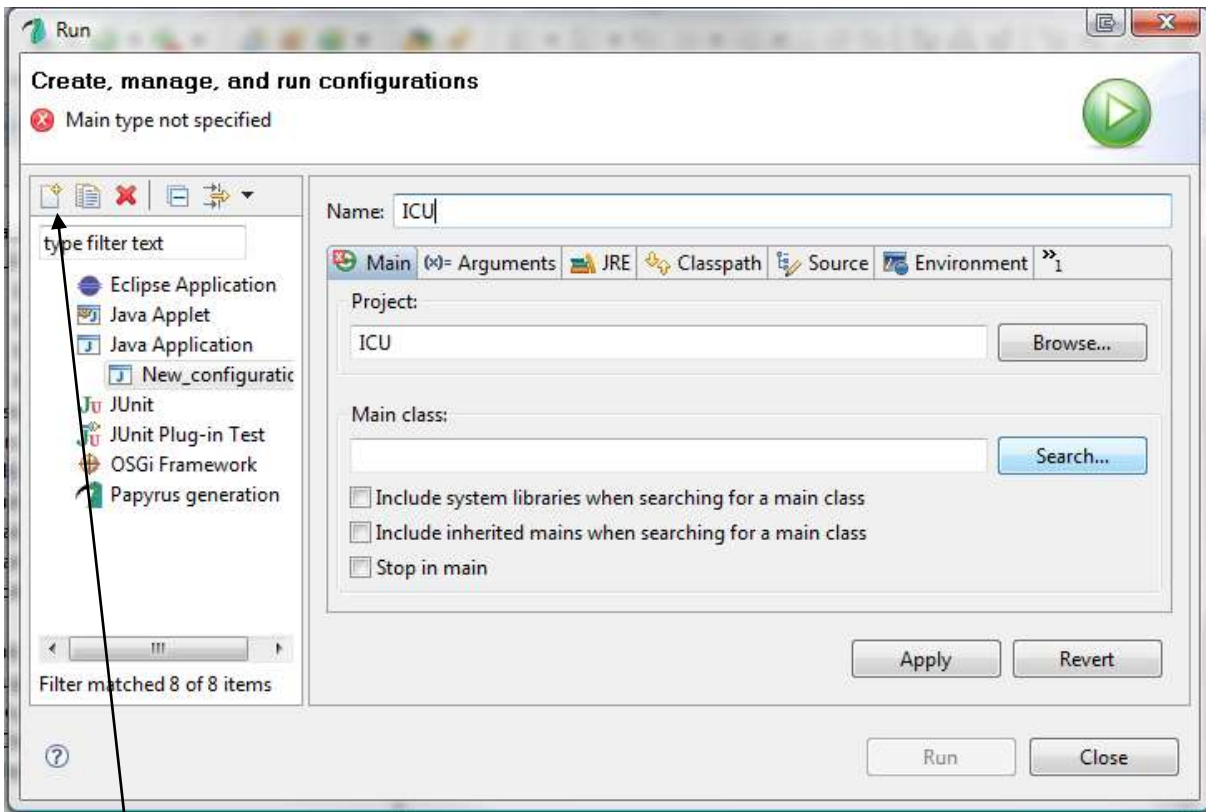
Problems			
0 errors, 3 warnings, 0 infos			
Description	Resource	Path	Location
Warnings (3 items)			
The local variable ICUsystemMain is	ICUsystem...	ICU/generated/ICU0	line 72
The serializable class ICUsystem_ICU	ICUsystem_...	ICU/generated/ICU0	line 9
The serializable class ICUsystem_ICU	ICUsystem_...	ICU/generated/ICU0	line 13

If there are any problems with the code, you will see Errors and Warnings in the Problems view. The code generated from ICU0 does contain some Warnings, but they are not critical.

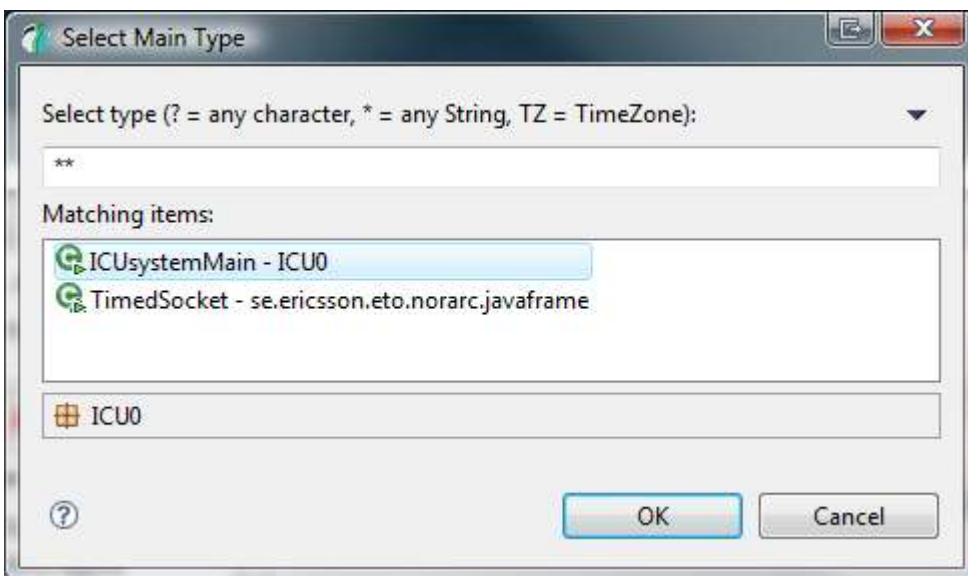
5. Create a Run-configuration



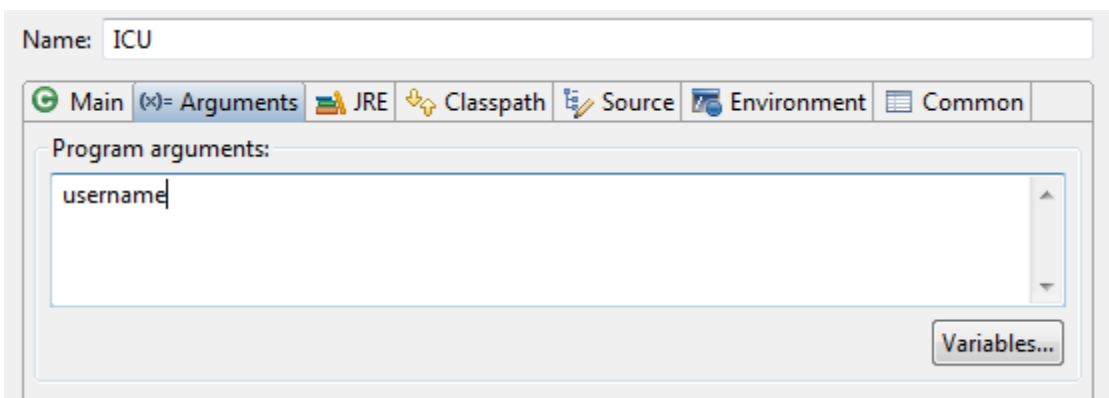
Click the Arrow next to the Run-button and select Open Run Dialog...



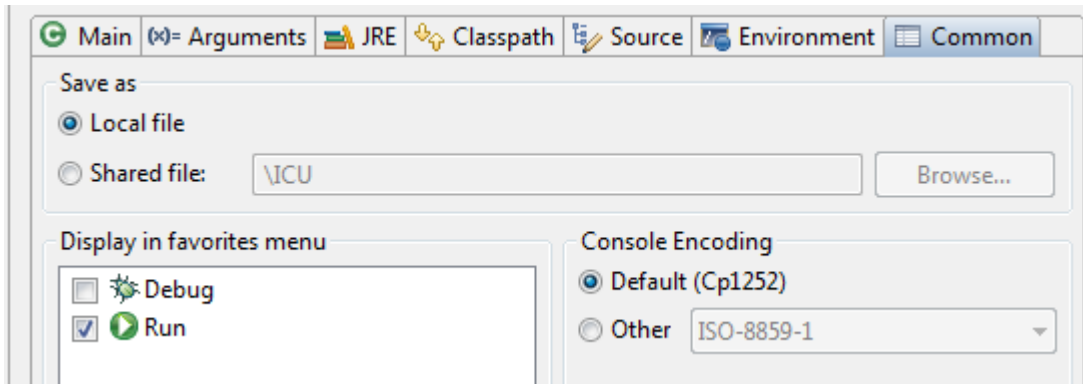
Create a new Java Application Configuration. Name it ICU and click the Search button in Main class:



Select ICUSystemMain as the main class.



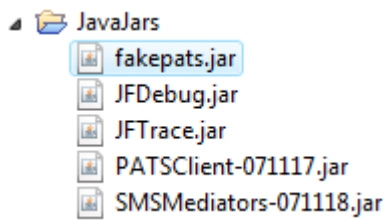
In the Arguments tab write your username.



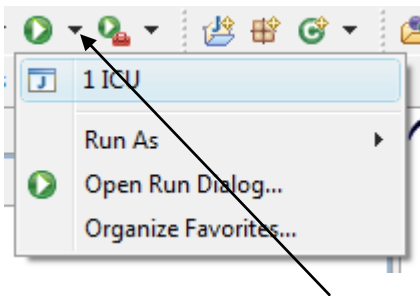
Under the Common tab check the check-box for Run.

Click Apply and then Close

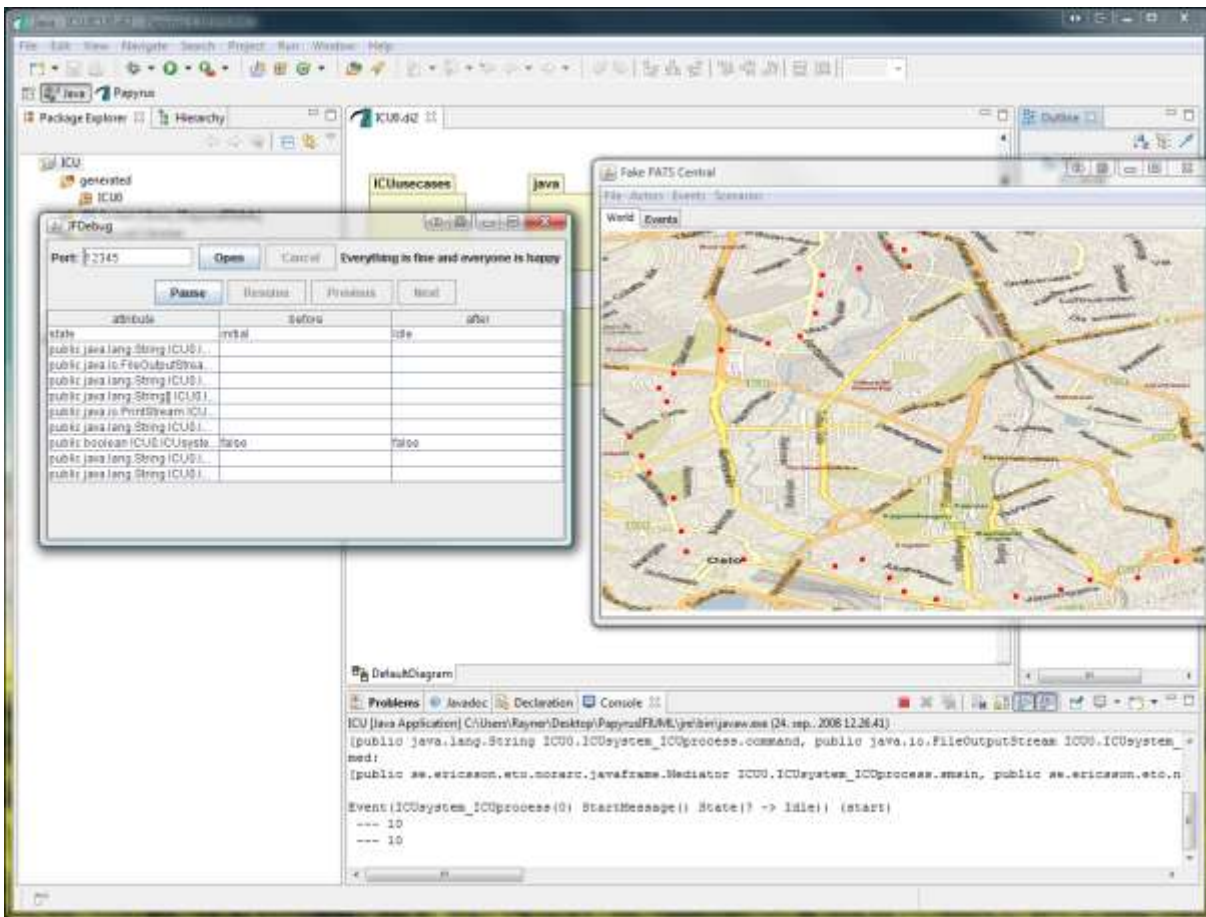
6. Executing ICU0



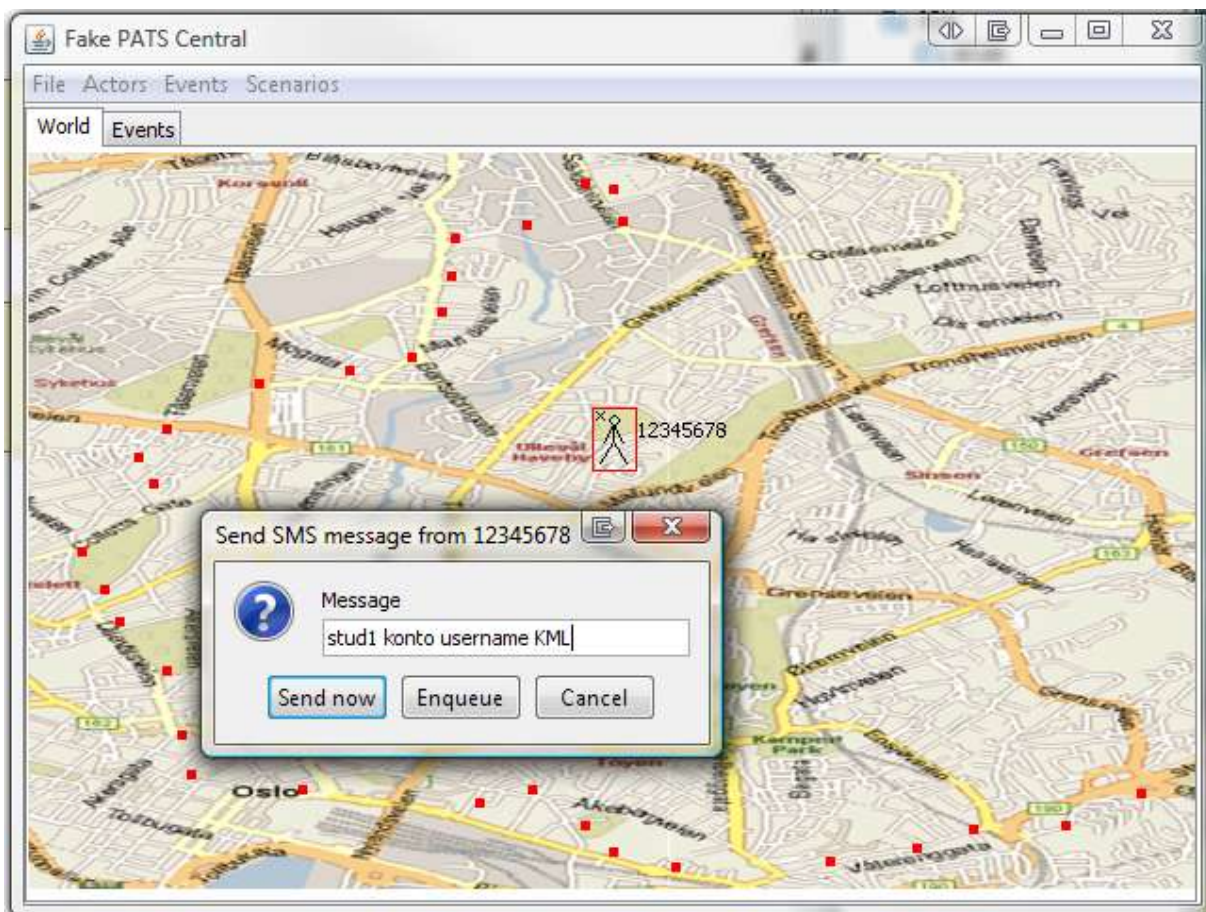
First start fakePATS by double-clicking the fakepats.jar in the JavaJars project.







Now run ICU by clicking the ICU run configuration in your Run Favorites.











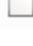

If all has gone well, your screen should look something like the above.



Start playing with FakePATS and SMS messages. Create a new Actor, give it a phone-number and start sending messages. You should see some activity in JFDebug and the Console view in Eclipse.

World		Events	
From	To	Details	
 12345...	2034	stud1 konto username KML	
		MessageID: 1222252123141 PositioningID: 12345678	
		MessageID: 1222252123141 Position: <Feilkode>100 <Breddegrad>N595608 <Lengdegrad>E0104...	
 2034	12345...	KML has been generated	

Events like Message sends and receptions are listed in FakePATS in the tab Events.

Name	Date modified	Type	Size
 bin	24.09.2008 12:25	File Folder	
 generated	24.09.2008 12:26	File Folder	
 .classpath	24.09.2008 12:25	CLASSPATH File	1 KB
 .project	24.09.2008 11:30	PROJECT File	1 KB
 ICU.kml	24.09.2008 12:28	KML File	1 KB
 ICU0.di2	24.09.2008 11:33	D12 File	77 KB
 ICU0.uml		UML File	27 KB
 JavaFrame.library		UML File	3 KB
 JavaFrame.profile.uml	24.09.2008 11:30	UML File	63 KB
 SMSPorts.library.uml	24.09.2008 11:30	UML File	5 KB

The KML file generated resides in the root-folder of your ICU JavaFrame Project. You may import this file into [GoogleEarth](http://www.google.com/earth/).