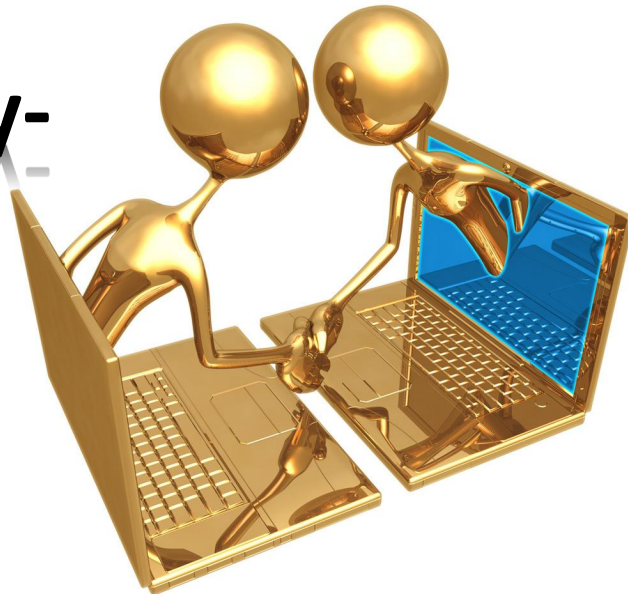


# Info. Meeting

## Principles & tools

### Technology- Enhanced Learning



CognIT

Jan Erik Dahl

# My three roles in this course

1. Teacher on theme 2) *Problem based learning (PBL) and ICT tools*
2. Provider of learning design/platform
  - Assist students and teachers
3. Researcher; gathering experiences from students and teachers

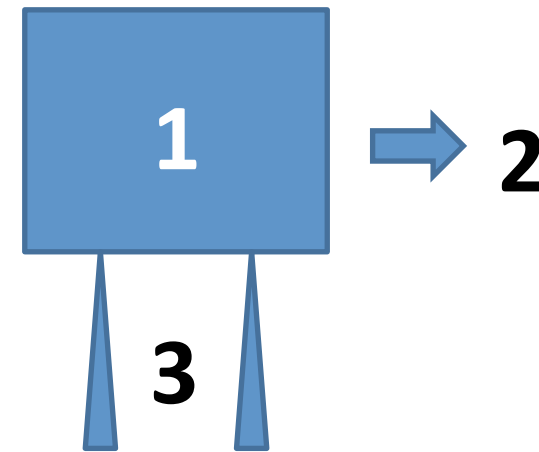
About me: I am an Industrial PhD candidate (Nærings-PhD), and senior consultant in CognIT, which is a software vendor and manufacturer.

# Some basic questions when approaching TEL and learning designs

1. What is learning? How do we learn? What are the prerequisites for learning?
2. What are we supposed to learn?
3. How do we support the learning process?
4. Challenges?

Compare basic questions that can be addressed to CSCL; what is;

- Computer-support?
- Collaboration?
- Learning?



# Regarding these questions

## 1. *What is learning?*

- Memorizing facts? Finding relevant info.? Solving problems? Creating knowledge? ... The answers are many and also reflect choice of learning perspective

## 2. *What are we supposed to learn?*

- Learning objectives, knowledge economy, 21st Century Skills

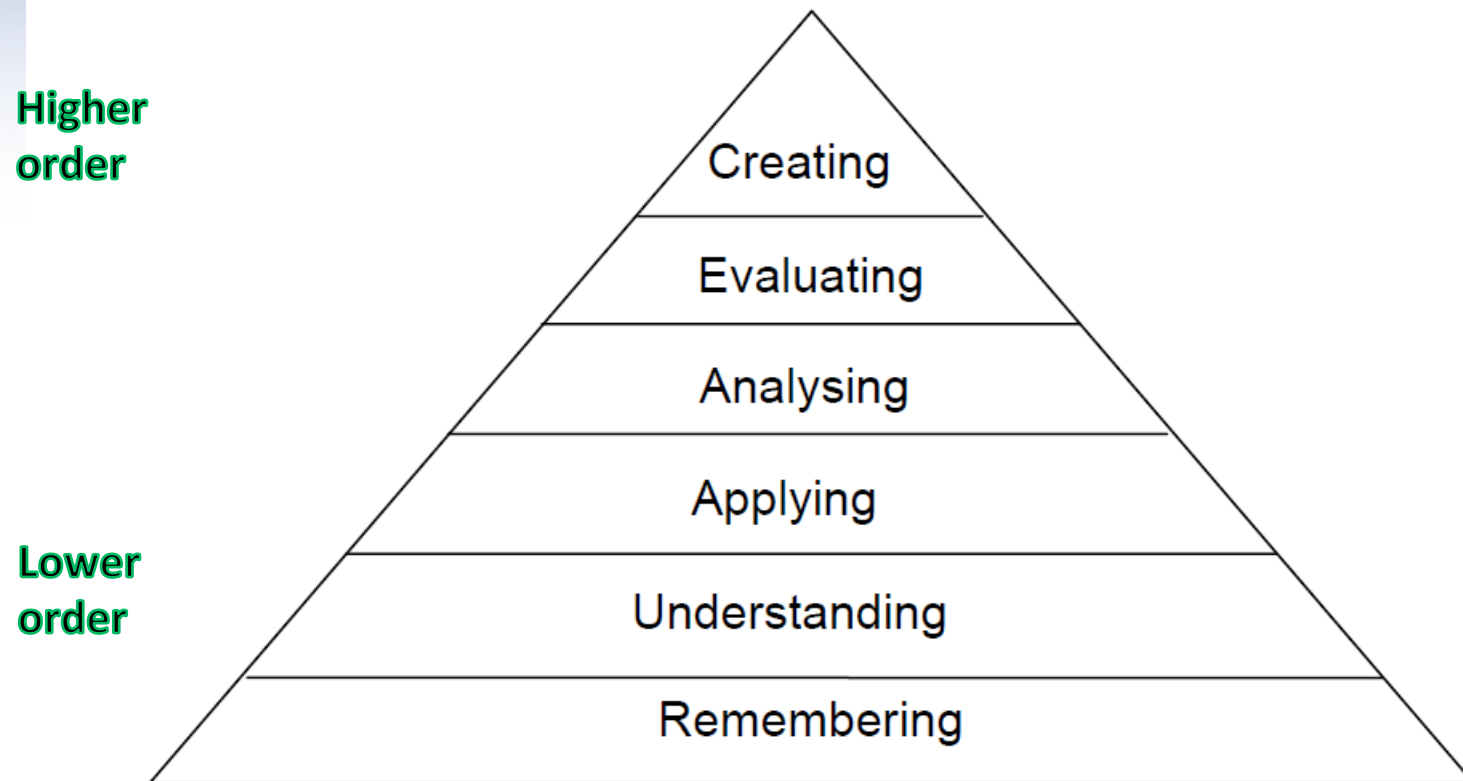
## 3. *How do we support the learning process?*

- Instructional/learning design, alignment

## 4. *Challenges?* Will be addressed later when launching the learning design.

# How will you answer these questions with regard to the different thinking skills in Bloom's taxonomy?

Figure 1 Revised taxonomy of the cognitive domain

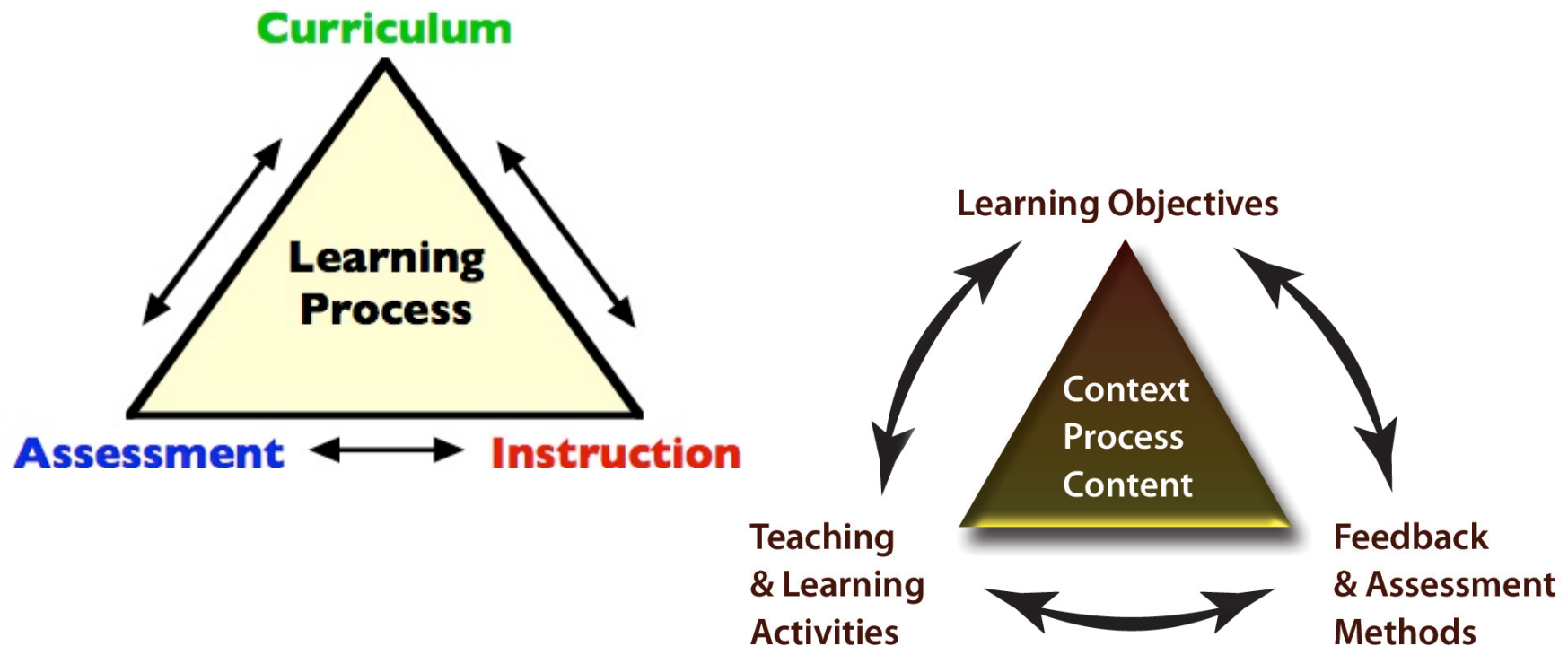


Source: Anderson et al. (2001)

Thomas C. Reeves. 2007: How do you know they are learning?: the importance of alignment in higher education

# Q.3: Alignment

Try browsing Google Image for «alignment» + «learning» or «teaching», and you will get a better idea about what alignment can be about, and possible element that need to be considered in the learning design, e.g.:



# Q.3: Alignment – a more complete model

Are these well aligned in your learning design?

