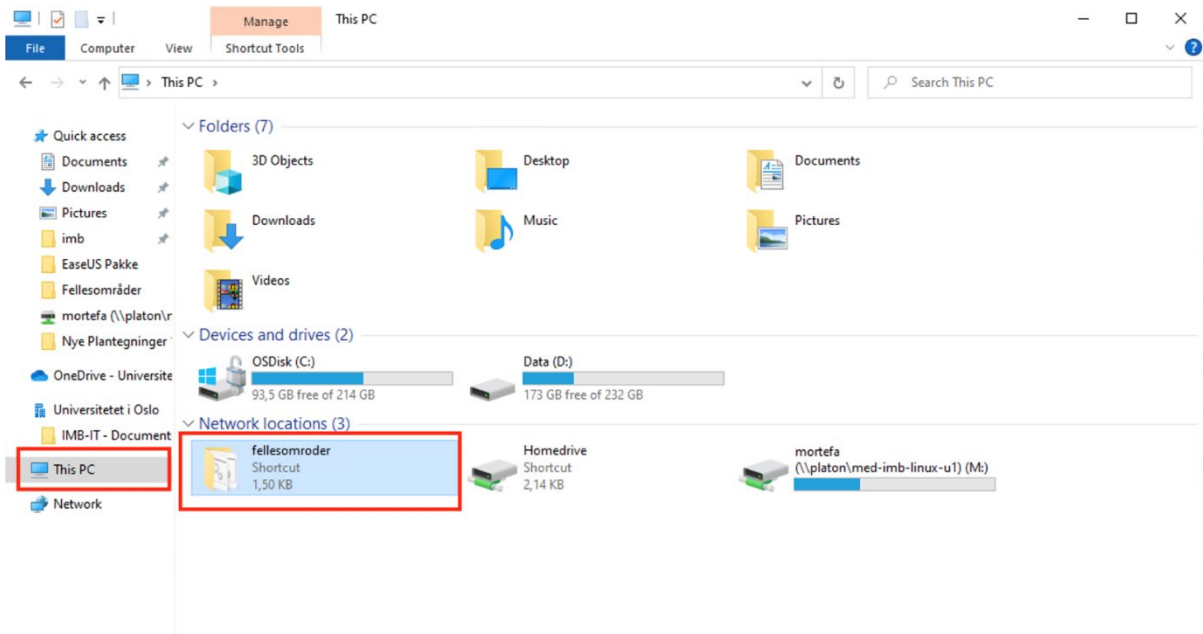
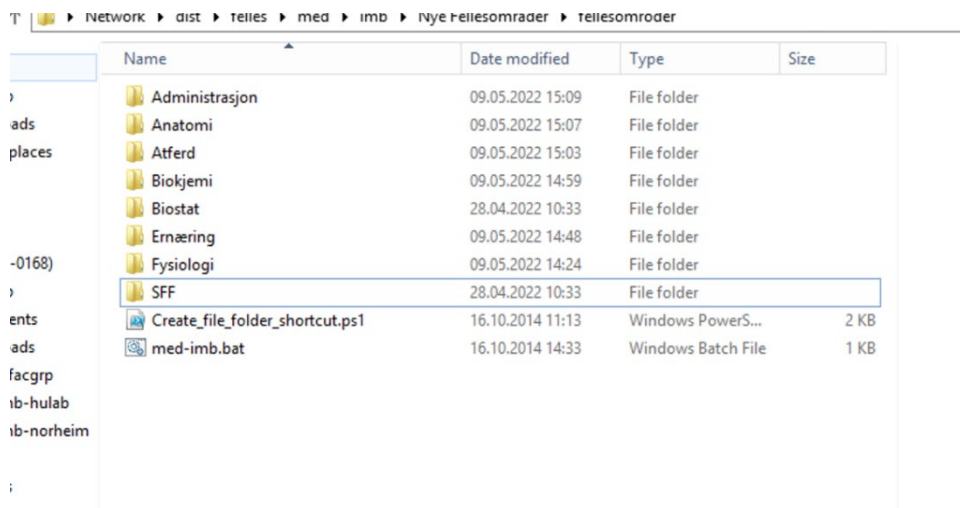


# How to create a shortcut to a common storage area or lagringshotell

Go to "This PC" and then "fellesomroder"



Go to your department



Double click on the storage area you have access to.

Name	Date modified	Type	Size
imb-pkfotoavd1.bat	28.04.2022 10:53	Windows Batch File	1 KB
imb-pkfotoavd2.bat	16.01.2021 17:16	Windows Batch File	1 KB
med-imb-elnikk.bat	28.04.2022 10:54	Windows Batch File	1 KB
med-imb-opptakskomite.bat	28.04.2022 10:57	Windows Batch File	1 KB
med-imb-pkadm.bat	28.04.2022 10:58	Windows Batch File	1 KB
med-imb-pkdiv.bat	28.04.2022 10:59	Windows Batch File	1 KB
med-imb-pkdyr.bat	28.04.2022 11:23	Windows Batch File	1 KB
med-imb-pkeksped.bat	28.04.2022 10:59	Windows Batch File	1 KB
med-imb-pkhms.bat	28.04.2022 11:00	Windows Batch File	1 KB
med-imb-pkintsvr.bat	28.04.2022 11:00	Windows Batch File	1 KB
med-imb-pkit.bat	28.04.2022 10:50	Windows Batch File	1 KB
med-imb-pkitu.bat	28.04.2022 11:00	Windows Batch File	1 KB
med-imb-pkmpmed.bat	28.04.2022 11:00	Windows Batch File	1 KB
med-imb-pkshaker.bat	28.04.2022 11:01	Windows Batch File	1 KB

A black command window will appear for a short while and a shortcut will be created in "This PC".

