

Attachments:

- 1. Presentation of the various courses**
- 2. The Programme Plan**
- 3. List of master's theses**
- 4. Statistics from the studentdatabase**

The programme evaluation of the master programme in Health

Economics, Policy and Management

Attachments

Institute of Health Management and Health Economics
1089 Blindern
0317 Oslo

Attachment 1: Presentation of the various courses.

I) Courses offered within health management and health politics

Mandatory courses:

HMM4201-Leadership and organization

This course explores the rich field of management as a science and an art. It will discuss some of the most influential theories of management, both historically and systematically, and look at how they fit the various managerial challenges posed by the health sector. It will also look at leadership and management practice, based on case studies and seminars. The course is also designed so as to give the students an opportunity to understand and develop their own potential as leaders and managers.

HMM4202- Structure, organization and financing of health care systems.

Nations have adopted different approaches to meet the health care needs of their citizens. This course provides an overview of the evolution, structure and current issues in health care systems, including health care systems known as Bismarck and Beverage models. The course examines three broad relationships of health care systems: The relationship between the citizen and the purchaser (usually a state or an insurance company), the relationship between the purchaser and the providers (usually hospitals, primary doctors and long-term care institutions), and the relationship between providers and the patient/citizen. Starting with a discussion of the micro fundamentals for providers' actions, we analyze the organizational and financial relationships between these three actors.

Elective courses:

HME4203- Topics in comparative health systems and reforms

During the last decades, a plethora of reforms and innovations in health policies have been launched both in Europe and elsewhere in the world. Some of these reforms and innovations have been closely followed up and assessed by government, research and other agencies. Out of these developments, a new field of knowledge is developing, around the generic label of evidence-based health policy. Health authorities world while are starting to collaborate in order to facilitate the process of innovations and reform transfers across countries, instead of developing their own solutions by trial and error as in the past. Examples of this trend have flourished in the various health care sectors, from integrated care policies, primary care reforms, hospital foundations and enterprises, prospective payment systems and managed competition. The course analyzes developments in those sectors in depth, assesses the extent to which there is a solid evidence base for different policy options, and describes the necessary requirements for an effective international transfer of innovations and reforms.

HME4204 - Health Politics

Health politics constitute the direct cause of health policies and reforms. In spite of this critical role, often more emphasis is put in the content of policies than on their determinants. This course focuses on the political determinants of health policy, including state actors, interest groups, public opinion, political institutions, power resources, organized action and political interactions. The main aim is to analyze the conceptual models developed by political science, economics, and other social sciences to account for policy and

organizational change. Another critical goal of the course is to enable students to design and direct process of change both at the organizational and health systems levels.

HME4205 – Internship.

Through continuous evaluation of one's own work, and the term paper the students must prove their ability to use the theoretical knowledge acquired in the courses offered in the two first semesters of the Master's Degree. First and foremost, the course offers the possibility of "learning by doing". The students will also acquire new knowledge through reflexive assessment of their own work. The students should reflect on how the disciplines, theory, and methods are relevant for the tasks they carry out, and what they observe in the working place.

HME4206- Topics in Health Policy

The course focuses on the possible impacts of various health policy reforms in areas such as patient payments (user fees), insurance payments (and plans), reimbursement systems, ownership and organizational structures. In particular the emphasis is placed on the implications for patients, providers and insurers and whether or not the actual reforms are to be considered as socially desirable or not.

HME4207- Nordic Health Policy and Politics.

- to give students a good overview of the developmental characteristics and present nature of the Nordic health care models and how, and why, they differ and are alike
- to develop students' ability to analyze health care systems in a comparative-historical way
- to make students see the strategic policy potential of a comparative-historical approach to understanding health care systems

HME4208- Just Health Care:

Inequalities in access to health care, combined with increases in the costs of health care, have fueled debates about social justice. This course explores different concepts of distributive justice in health and health care, and answers questions such as:

What makes health and health care special in the context of distribution?

Is inequality in access to health care, and inequality in health, a moral problem?

When is rationing fair?

Should we be held responsible for our health?

This course aims at giving students up-to-date knowledge on a variety of issues of distributive justice within the health care context.

HME4209- Leadership and organization.

This course is identical to the course HMM4201: Leadership and organization. It will be offered as an elective course in the spring of 2010.

HME4210- Leadership in practice.

Kunnskapsmål:

Emnet skal gi deg en innsikt i utfordringer i forbindelse med ledelse og samarbeid og en utvidet forståelse av sentrale teoretiske modeller innen feltet. Emnet har til hensikt å demonstrere dynamikk og problemer i team og samarbeid generelt og trening i praktiske lederoppgaver.

Ferdighetsmål:

Studentene skal kunne beherske noen metoder til utforskning av ledelse i konkrete situasjoner. Studentene får egnerfaring som grunnlag for å etablere ferdigheter i det å løse

samarbeidskonflikter i tillegg til individuell tilbakemelding på egen teamrolle. Du får en viss trening i praktisk intervensjon for å bedre ledelse og kommunikasjon

II) Courses offered within economics:

Mandatory courses:

HMM4301: Optimal allocation of health care resources and economic evaluation of health care technologies.

The aims of this course are to: Give the students a basic understanding of the normative issues involved in prioritizing health care resources, as well as an understanding of the theoretical foundation of economic evaluation. Students should get a basic knowledge of the methods at hand for evaluation of diagnostic and therapeutic technologies within health care. The course should provide the necessary tools for understanding the literature in the field, and to carry out a simple economic evaluation. Students should understand the relevance of these methodologies for health policy and planning.

Elective courses:

HME4302-Health Economics.

In general, the students are supposed to acquire knowledge of the basic theories and models in the field of health economics. These models are important tools for the understanding and discussion of central parts of health policy. Hence, the course aims at giving the students knowledge that enables them to contribute to the discussion of health policy issues both at the micro and the macro levels.

HME4303- Project evaluation and analysis of investment decisions.

To provide the student with fundamental knowledge about project evaluation and in particular investment decisions within the institutional environments of health enterprises. The course also provides the student with knowledge of financial considerations related to investment decisions in health care organizations.

HME4304- Designing Management control systems in Health care Organizations.

To provide the student with fundamental concepts and management control tools of health organizations, including cost and performance management, costing health care services for decision-making, and control and the organization of internal markets.

HME4305- Methods for the economic analysis of costs and demand in health care.

The aims of the course are to give the students a basic understanding of how demand and cost analyses are used in resource allocation within the public sector and the relevance of these methodologies for public policy and planning.

HME4306- Topics in Health Economics.

This course is recommended for those students later planning to follow HME4302 (Health Economics). Each of the three subsequent parts is a more in-depth study into one particular topic within health economics. "Weakness of will" focuses on individual planning problems and dynamic inconsistencies that often arise in connection with addictive goods such as drugs, alcohol and tobacco. "Medical errors" is concerned with incentives and the prevention of errors and studies the effectiveness of various liability rules. "Competition in health care" is

concerned with health-provider competition and investigates the role of price - and quality competition under various assumptions about market structures.

HME4307- Measuring QALYs: A theoretical and practical approach.

The two main purposes of this course are to teach the students different measures of estimating quality adjusted life years and to train the students to estimate QALYs by using different statistical methods.

HME4308- Market failures.

This course intends to provide students with sufficient background in economic welfare theory to be able to understand under what conditions health care services can be allocated through markets. In particular the course intends to provide students with an ability to understand when markets are institutions that yield an efficient allocation of the resources of society.

III) Courses offered within the field of medicine:

Mandatory courses:

HMM4401- Health and Medicine

This is an introductory course required for master students without a BA in health management and health economics or studies within medicine or health sciences. At the end of the course the students will be familiar with basic concepts and mechanisms related to health and disease, how health and disease are defined and classified, how medical technology develops and spreads, and they will become acquainted with basic thinking in medical decisions. They will also be exposed to various ways to describe the health situation in populations. Finally they will be introduced to the demand for health care and ethical dilemmas involved in decisions related to health and disease.

Elective courses:

HME4401- Need for health care services related to demographic, epidemiologic, and health care technology development

. After the course the students should

- Be familiar with demographic terms and trends and know how projections are done
- Be able to find and use vital statistics in planning health services
- Know basic epidemiological concepts and be able to use them in exercises in order to perform need assessment
- Be able to identify epidemiological changes globally and to present evidence as to why this changes have happened
- Be able to interpret various trends and data and use techniques to make projections to estimate the need for various health care services
- Know the relationship between the concepts need, demand and supply

HME4402- Evaluation of the quality of services delivered by the health care sector

Quality of interventions in the health care is increasingly focused worldwide. This course penetrates the numerous aspects of quality within the health care services with special emphasis on the quality of medical and caring interventions delivered to the patients. Various ways to measure and evaluate quality will be discussed in depth, as well as conditions influencing the quality. At the end of the course students should be qualified to develop

programs that evaluate and improve the quality of the services, included documentation of standards set by the health authorities.

HME4404- Health Communication

The issue of health communication has an internal and an external dimension. The internal dimension concerns understanding and interaction between different members of the health service, while the external dimension concerns the relation between the health service and the public. The students will be introduced to relevant challenges and problems related to the aim of achieving efficient communication in both areas. A key concept in the course will be the concept of communication conditions, the conditions that must be met in order for health communication to function adequately within a given context. The students will also be introduced to the connection between beliefs about the health service and basic health concepts like disease, illness, and sickness, as well as the question of how health beliefs are connected to values. The course will pay special attention to the question of whether arguments in official documents concerning the organization of the health system employ as premises claims that are accepted by many members of the public.

(IV) Courses offered within quantitative/qualitative methods:

HMM4101: Research methods and statistics

The course presents and discusses methods for analysing simple statistical and econometric models. Regression analysis is a central part of the course and the student will be familiar with ordinary least squares method (OLS) as well as more sophisticated regression techniques. ~~The students will be able to specify statistical hypotheses, perform analysis by using statistical software and evaluate the results.~~ By the end of the course an overview over advanced econometric analysis will be given.

HMM4104: Research Design and Qualitative Methods

The course will qualify the students to perform empirical and theoretical studies on the health care. In particular, the course will

- enable students to conduct independent scientific investigations of a broad spectrum of issues linked to health care, based on a specter of research methods
- enable students to assess existing research in a critical and independent manner.
- choose a method that will be suited for the formulated research question
- develop students' ability to discuss a defined methodological issue in a systematic manner
- enable student to understand and deal with ethical issues in science and specially in health care research
- enable students to write a scientific report

Attachment 2: The Programme Plan

VEDLEGG 1

ENCLOSURE

DESCRIPTION OF THE MASTER'S DEGREE PROGRAMME IN HEALTH ECONOMICS, POLICY AND MANAGEMENT.

1. Name:	Health Economics, Policy, and Management (2-year Master's Degree Programme)
2. Description:	<p>The programme focuses on economic, political, and organisational analysis, health care policy evaluation and health care management in an international perspective.</p> <p>The programme is taught in connection with the two main research areas at the Department of Health Management and Health Economics. Both areas combine academic essential research with applied approaches, often commissioned by health organizations, public authorities and the Norwegian Research Council.</p> <p>The first research area, health economics, focuses on; the economic analysis of health policies, economic incentives, normative issues such as cost-benefit analysis, determinants of hospital efficiency, factors behind the demand for health services, and the labour markets for health personnel. At present health economics research is mainly organised within HERO (the Health Economics Research Programme at the University of Oslo), a partnership between the Department of Economics (Faculty of Social Sciences), the Frisch Centre for Economic Research (located at Oslo Innovation Centre), and the Department of Health Management and Health Economics (Faculty of Medicine).</p> <p>The second research area focuses on; the organisation, management, and politics of health care, and covers topics such as; hospital performance evaluation, bargaining institutions and procedures, quality of health care, benchmarking procedures, changes in leadership and organizational culture; the implementation of innovative technological solutions and the recent re-centralization of hospital ownership in Norway. This research is currently being organised within the HORN programme (Health Organisation Research Norway). HORN is a partnership between the Department of Health Management and Health Economics, and SINTEF Health Research (which covers a wide range of applied research topics, including the collection and analysis of data on the activity, cost and performance of all hospitals in Norway). Two regional health enterprises, Helse Midt-Norge (RHF) and Helse Øst (RHF), actively supports this research programme amongst other by being "sites" for the specific case studies undertaken.</p> <p>The Department is in the process of organising cooperation with the London School of Economics and Political Science, the Erasmus University of Rotterdam, and the Technical University of Berlin. This cooperation will expand teaching resources and research opportunities for our master students.</p>
3. Objectives:	The Master's programme aims at providing analytical and applied knowledge on the organisation of health care in Norway and in other countries. An

	<p>important feature of the Master programme is its multidisciplinary approach representing an essential measure for addressing adequately the complexity and multidimensionality of health care.</p> <p>The students will develop abilities to elaborate and evaluate complex policy and organizational challenges, both at the micro level and at higher levels within the health care systems. Examples here are the management of organisational processes, the implementation of policy reforms and providing advice to health care decision-makers. To this end, they will benefit from the broad range of specific competences being acquired at the programme covering topics such as political and organizational analysis, demand for health care services, communication, medical ethics, advanced methodologies of statistics, economics, technology assessment and details of national and international health care law.</p>
<p>4. Involved units at The University of Oslo:</p>	<p>A wide range of courses offered in Master programmes at other faculties may be chosen as elective courses, although not all of these courses will be available in English. The Department of Health Management and Health Economics will be responsible for the planning and implementation of the programme. The department plan to involve the following other departments at the UiO:</p> <ul style="list-style-type: none"> • The Department of Economics • The Department of Political Science • The Department of Psychology • The Faculty of Law
	<p>There is already collaboration at graduate level with the Department of Economics and the Department of Political Science.</p> <p>The Department of Psychology offers an international Master's degree programme in psychology with a possibility to specialize in work and organization, and an informal agreement for student exchange and the joint development of common courses already exists.</p> <p>The faculty of Law is involved in the Bachelor's degree programme in Health Management and Health Economics by giving a mandatory course in Health Law. The Master's degree programme includes an elective course in Labour and Contract Law, which will be given in Norwegian.</p>
<p>5. Admission criteria:</p>	<p>The Master's degree programme is eligible for students from any country given a successfully completed Bachelor's Degree of at least 3 years' duration beyond the minimum requirements for matriculation at a Norwegian institution of higher education. In addition applicants must document their proficiency in the English language. For further information about admission requirements and admission procedures for international applicants, please see the website admission to the University of Oslo. English language skills have to be documented by: either TOEFL test (min. 550 points) or IELTS band 6.0. Candidates from countries where English is the language of instruction in higher education are exempted from documenting English</p>

skills, see information concerning English tests.

Admission to the Master's programme in Health Economics, Policy, and Management requires a Bachelor's degree in Health Management and Health Economics, Social Sciences, Economics, Public Administration, or Health Sciences. Norwegian students with a cand. mag.-degree, who fulfil the general admission requirements, may also be admitted. For all applicants with a Bachelor's degree, a minimum requirement is 10 ECTS credits in Statistics or Social Science Methodology. Students without a degree in Social Sciences/Economics must have at least 60 ECTS credits in the Social Sciences or Economics. Up to 15 students with a Bachelor's degree in Health Management and Health Economics from the University of Oslo are given priority, if fulfilling the minimum standard according to the general admission criteria for Master's degrees at UiO. Priority among these students is based on the grades for those courses being specific for the Bachelor's degree programme (This includes all courses with the exception of the following; Examen philosophicum, Examen facultatum, the elective course in 4th semester and the courses given by other programmes).

The admission of international students complies with the rules of the University of Oslo, Section for Academic and Student Affairs.

Norwegian students must submit their application within April 1st. For those who have not completed their Bachelor's degree, the diploma must be submitted immediately after graduation and not later than July 15th.

International students from countries other than the Nordic already living in Norway and who do not apply for financial support must send their application within February 1st.

International students who want to apply for a scholarship should follow the guidelines given in the scholarships section. A summary of the funding opportunities and admission dates at Oslo University is provided below. The brochure "Prospectus 2005-2006" may be ordered from: Department of Academic Affairs and Research Administration, P.O.Box 1083 Blindern, N-0317 OSLO, NORWAY or by visiting Department of Academic Affairs and Research Administration.

Funding opportunities and application deadline for international students 2005-2007

NORAD: Students from The Norwegian Aid Agency's cooperating countries may apply for scholarships through their fellowship program. Application forms and guidelines are available in Norwegian embassies and consulates, and the application should be submitted within 15 November 2005 for studies starting in August 2006.

QUOTA: The QUOTA programme is open for students from developing countries and Eastern Europe. Applications should be submitted to the

	<p>International Relations Office at the University of Oslo within 1 December. Further information: http://www.uio.no/english/academics/admission/quota/.</p> <p>Statens lånekasse for utdanning: For Norwegian students, Statens lånekasse for utdanning funds this programme according to its standard regulations.</p> <p>There are no tuition fees at the University of Oslo for students admitted to the programme. However, the cost of living in Oslo is high; a student should estimate USD 1000 pr. month. Each semester lasts for 5 months</p>																																				
6. Recruitment	<p>Most Master's programme students will be recruited from various Bachelors degrees in Health Management, Health Economics and/or Health Policy, both in Norway and internationally. Students with Bachelor's degrees in Social Sciences, Economics, Management, or Health sciences will also be considered for admission. At present there is no other similar Master's programme at the University level in Norway.</p> <p>The health care sector constitutes a significant share of every economy. Most countries are confronted with growing challenges due to an increasing demand for health care services and technological changes and innovation. Many countries have, in response to these challenges, implemented various types of reforms such as; new health care financing systems, the restructuring of health organisations, the use of strategic planning and the attempts to devise more customized incentive systems. The need for personnel with the competence given in this programme is evident.</p>																																				
7. Number of students	Between 20 and 40 students annually.																																				
8. Structure and contents:	<p>The core of the programme are 4 or 5 mandatory courses (10 ETCS each), depending on the students' background; 4-5 elective courses (or any number of courses equivalent to 50-60 ETCS); plus a Master's thesis (30 ETCS). The structure of the programme is as follows:</p> <table border="1"> <thead> <tr> <th colspan="4"><i>Health Economics, Policy and Management</i></th> </tr> </thead> <tbody> <tr> <td>4th semester</td> <td>HMM2150 Thesis work</td> <td>HMM2140 Research design</td> <td>Elective course</td> </tr> <tr> <td>3rd semester</td> <td>HMM2180 Thesis work</td> <td>HMM2140 Research design</td> <td>Elective course</td> </tr> <tr> <td>2nd semester</td> <td>HMM2160 Economic evaluation</td> <td>Elective course</td> <td>Elective course</td> </tr> <tr> <td>1st semester</td> <td>HMM2101 Statistics and survey methods</td> <td>HMM2102 Health & Medicine of Leadership and organization</td> <td>Elective course</td> </tr> <tr> <td></td> <td>10 credits</td> <td>10 credits</td> <td>10 credits</td> </tr> <tr> <td colspan="4">Legend</td> </tr> <tr> <td colspan="4">Mandatory courses (HMM)</td> </tr> <tr> <td colspan="4">Elective courses (HME)</td> </tr> </tbody> </table>	<i>Health Economics, Policy and Management</i>				4th semester	HMM2150 Thesis work	HMM2140 Research design	Elective course	3rd semester	HMM2180 Thesis work	HMM2140 Research design	Elective course	2nd semester	HMM2160 Economic evaluation	Elective course	Elective course	1st semester	HMM2101 Statistics and survey methods	HMM2102 Health & Medicine of Leadership and organization	Elective course		10 credits	10 credits	10 credits	Legend				Mandatory courses (HMM)				Elective courses (HME)			
<i>Health Economics, Policy and Management</i>																																					
4th semester	HMM2150 Thesis work	HMM2140 Research design	Elective course																																		
3rd semester	HMM2180 Thesis work	HMM2140 Research design	Elective course																																		
2nd semester	HMM2160 Economic evaluation	Elective course	Elective course																																		
1st semester	HMM2101 Statistics and survey methods	HMM2102 Health & Medicine of Leadership and organization	Elective course																																		
	10 credits	10 credits	10 credits																																		
Legend																																					
Mandatory courses (HMM)																																					
Elective courses (HME)																																					

	<p>During the first semester all students must register for 2 mandatory courses, depending on the students' prior Bachelor's degrees. HMM 4101 Statistics and survey methods and HMM4201 Leadership and organization. In addition HMM 4401 Health & Medicine is mandatory for students without a previous background in health sciences. Students without a background in Economics are encouraged to choose elective courses that meet the formal prerequisites for courses they intend to follow at later stages in the programme (e.g. ECON4120 - Mathematics 2: Calculus and linear algebra, which is a formal prerequisite for HME 4302 - Health Economics)</p> <p>During the second semester, all students must register for one mandatory course (HMM 4301; Economic Evaluation); and two elective courses (or any number of courses equivalent to 20 ETCS credits). One of the electives is an internship in a health care (related) institution.</p> <p>During the third semester, all students must register for one mandatory and one elective course (10 ETCS credits each), as well as the first stage of the Master's thesis (10 ETCS credits). The mandatory course is a course in research design as a preparation for the thesis work.</p> <p>In the fourth semester, students will complete the Master's thesis (20 ECTS), in addition to taking an elective course (10 ECTS).</p>
9. Thesis work :	<p>The programme includes a Master thesis of 30 ETCS credits. The thesis may cover a broad range of issues as long as the topic concerns health and health services. For students wanting to study health care in other European countries, specific support will be provided (see 11 below). Also students wanting to pursue a PhD after the Master's programme will be given special advice and support. Each student will be provided with a supervisor, which will be a professional of recognized international prestige and expertise in the given field of study.</p>
10. After completion / career opportunities:	<p>The programme prepares students for positions in both the public and private sectors, and in a variety of settings, such as hospitals and health centres, international organizations, consultancy firms, pharmaceutical and insurance companies, technology assessment agencies, advisory boards and health authorities at municipal, regional and national levels, as well as within government institutions. It also gives students a solid foundation for entering a Ph.D. programme or for further research.</p>
11. Internationalization	<p>The programme will be widely advertised in European and other countries, using the usual professional networks and channels. Agreements with several master programmes internationally in the relevant field are being planned in order to make it possible for students to take parts of the programme abroad. For the time being this includes the London School of Economics and Political Science, the London School of Hygiene and Tropical Medicine, the Institute of Health Policy and Management of the Erasmus University Rotterdam, and the Department of Health Management and Economics of the</p>

	Technical University of Berlin.
12. Part-time students	For Norwegian students the Master's programme can be completed either on full-time or on part-time basis. Full-time students are expected to complete the programme within two years. Part-time students may use up to 4 years. International students have to complete the programme within 2 years as full-time students.
13. Interim arrangements	Not applicable, as this is a new programme.
14. Mutual courses	All mandatory courses in the Master's programme are developed specifically for this programme. Some of the elective courses given by the Department of Health Management and Health Economics will be shared with students in the experience-based Master's degree programme in Health Management at the Department. Some of these courses will also be offered as electives for students at other Master's programmes, provided they fulfil the formal requirements. Some elective courses will be developed in collaboration with programmes and departments at the Faculty of Social Sciences (see 4)
15. Overview of the courses:	Enclosed. The programme offers a substantial number of elective courses. Student interest and available teaching resources will determine which elective courses are offered each semester.
16. Professional resources:	The staff at the Department for Health Management and Economics will be responsible for developing and giving most of the courses. The staff will consist of professionals with a background that cover most of the courses. Some invited professors and supervisors from international partner institutions (see 11) will teach within the programme under short-time contracts.
17. Economic resources:	Enclosed

Attachment 3: List of master's theses:

Management/leadership:

1. *Generation of cost-reducing initiatives in the hospital budgetary process. Mythical, cultural and rational influences in the case of Ahus;*
2. *Introducing a New Practise in Healthcare. A case study of the introduction of laparoscopic colon surgery in a Norwegian hospital;*
3. *NPM inspired health sector reforms and Bureaucracy. Comparing Norway and Tanzania;*
4. *"You have to be willing to change!" A case study of hospital employees' experiences with a restructuring project seen in the light of Scott and Jaffe's change curve;*
5. *The organizational development processes towards New Ahus. Creating a new organizational structure;*
6. *The Implementation of New Public Management in the Health Care Sector of Norway and Germany;*
7. *Building A Competitive Advantage through Staff and Patients' Satisfaction – Improving Performance in a Hospital;*
8. *The ISO 9001: 2000 Standard: Legitimization, Fashion or Actual Quality Improvement;*
9. *Coordination of Health and Social Care Services between Primary and Secondary health and social care institutions in the Eastern Regional Health Enterprise (RHE);*

Financing of health care services

1. *"Towards a Better Patient Care". How does the coordination of the use of resources within an out-patient and day treatment department at the National University Hospital work?*
2. *A projection of China's health expenditures from today to 2050;*
3. *Lower Costs or Increased Selection? Effects of Privatization of Day Surgery Treatments in Norway;*

Economic evaluation of health care technologies:

1. *Cost-Utility Analysis of replacing photodynamic therapy with verteporfin by anti-VEGF treatment with ranibizumab on patients with predominantly classic neovascular age-related macular degeneration;*

2. *Cost-effectiveness of alendronate in the treatment of low bone mineral density in the time of price competition;*
3. *Preferences for prevention programs against chronic disease: does expected cause of death matter?*
4. *VALUATION OF SMALL IMPROVEMENTS IN LONGEVITY: IS THE UTILITY LINEAR IN TIME?*
5. *Physicians' knowledge and attitudes towards Evidence-Based Medicine (EBM). A survey of Norwegian physicians' knowledge and attitudes towards EBM;*
6. *Cost-effectiveness of screening programme for abdominal aortic aneurysm;*
7. *Cost-effectiveness analysis of citalopram vs. escitalopram;*
8. *Individual's Validation of a Health Improvement – Is It Linear?*

Other topics:

1. *Hospital Costs for Patients with Hospital Acquired Infections in a Norwegian Tertiary Care Hospital;*
2. *Effects from Text message Reminders on Attendance in a Psychiatric District Centre. Do clients at first time consultations have higher fail to attend rates?*

3. *Undocumented immigrants and the experiences of Norwegian general practitioners with this group of patients;*
4. *The Demand for Health in Oslo;*
5. *Towards Result Orientation in Norwegian Development Aid*

Attachment 4: Statistics from the studentdatabase

Appendix C: Statistics of students' grades (mandatory courses)



UiO-Studieavdelingen (BINE)

FSPROD (18.01.2009 Kl. 14:22)

Side 1 av 1

FS580.001 Resultatfordeling

Eksamen: HMM4401 1 OS 2008 HØST

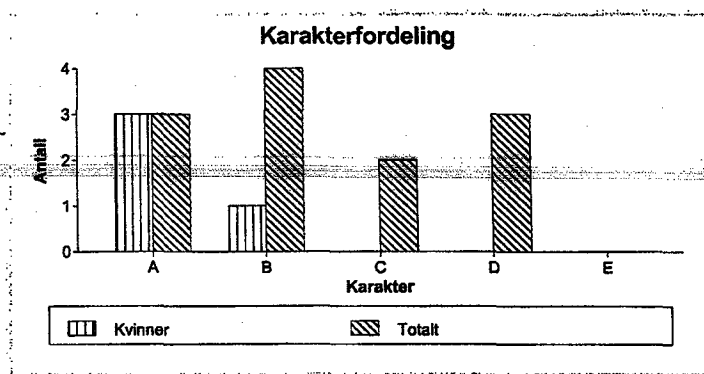
Health and medicine - Oppgave og skriftlig eksamen

10,0sp

Karakterregel: Beste: A, Bestått: E, Dårligste: F

	Totalt	Kvinner	Menn
Antall kandidater (oppmeldt):	15	5	10
Antall møtt til eksamen:	14	5	9
Antall bestått (B):	12	4	8
Antall stryk (S):	2	1	1
Antall avbrutt (A):	0	0	0
Gjennomsnittskarakter:	B	A	C
Antall med legeattest (L):	1	0	1
Antall trekk før eksamen (T):	0	0	0

Karakter	Antall	Antall kvinner
E	0	0
D	3	0
C	2	0
B	4	1
A	3	3



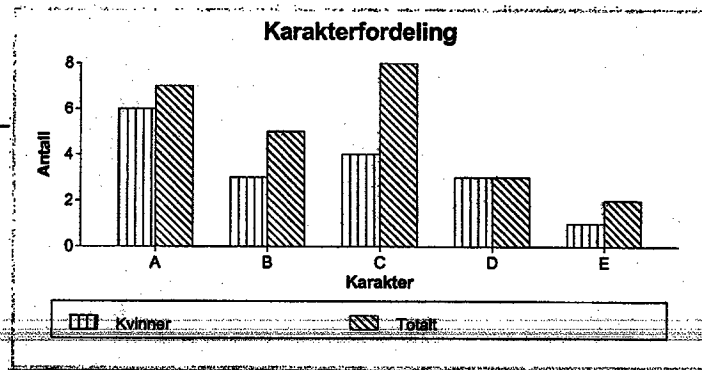


Eksamen: HMM4101 1 S 2008 HØST
 Research methods and statistics - Skriftlig eksamen
 Karakterregel: Beste: A, Bestått: E, Dårligste: F

10,0sp

	Totalt	Kvinner	Menn
Antall kandidater (oppmeldt):	35	23	12
Antall møtt til eksamen:	29	19	10
Antall bestått (B):	25	17	8
Antall stryk (S):	4	2	2
Antall avbrutt (A):	0 14%	0 11%	0 20%
Gjennomsnittskarakter:	C	B	C
Antall med legeattest (L):	2	1	1
Antall trekk før eksamen (T):	0	0	0

Karakter	Antall	Antall kvinner
E	2	1
D	3	3
C	8	4
B	5	3
A	7	6





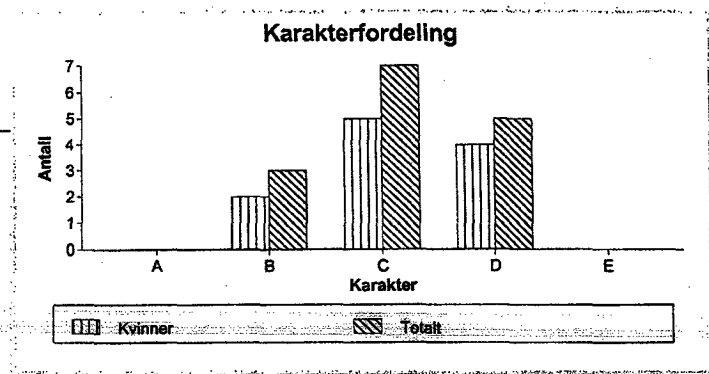
Eksamen: HMM4301 1 OS 2008 VÅR

Optimal allocation of health care resources and economic evaluation of health care topics

Karakterregel: Beste: A, Bestått: E, Dårligste: F

	Totalt	Kvinner	Menn
Antall kandidater (oppmeldt):	29	19	10
Antall møtt til eksamen:	18	12	6
Antall bestått (B):	15	11	4
Antall stryk (S):	2	0	2
Antall avbrutt (A):	1	1	0
Gjennomsnittskarakter:	C	C	C
Antall med legeattest (L):	0	0	0
Antall trekk før eksamen (T):	0	0	0

Karakter	Antall	Antall kvinner
E	0	0
D	5	4
C	7	5
B	3	2
A	0	0



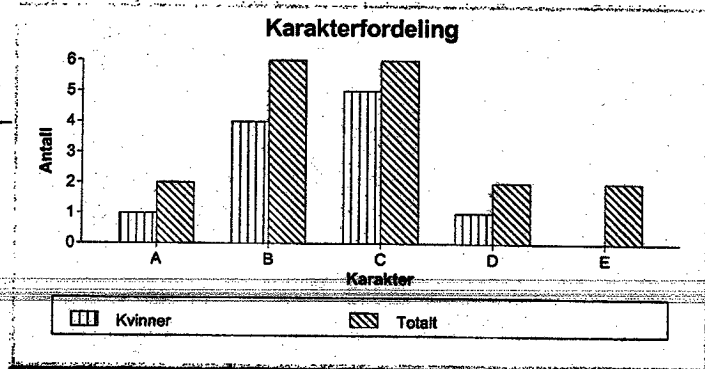


Eksamen: HMM4201 1 S 2007 HØST
Leadership and organization - Skriftlig eksamen
Karakterregel: Beste: A, Bestått: E, Dårligste: F

10,0sp

	Totalt	Kvinner	Menn
Antall kandidater (oppmeldt):	30	19	11
Antall møtt til eksamen:	20	13	7
Antall bestått (B):	18	11	7
Antall stryk (S):	2	2	0
Antall avbrutt (A):	0	0	0
Gjennomsnittskarakter:	C	C	C
Antall med legeattest (L):	3	1	2
Antall trekk før eksamen (T):	0	0	0

Karakter	Antall	Antall kvinner
E	2	0
D	2	1
C	6	5
B	6	4
A	2	1





FS580.001 Resultatfordeling

Eksamen: HMM4202 1 OMS 2008 HØST

Structure, organization and financing of health care systems - Oppgave, en mtl. og en skriftl

Karakterregel: Beste: A, Bestått: E, Dårligste: F

	Totalt	Kvinner	Menn
Antall kandidater (oppmeldt):	21	12	9
Antall møtt til eksamen:	21	12	9
Antall bestått (B):	21	12	9
Antall stryk (S):	0	0	0
Antall avbrutt (A):	0	0	0
Gjennomsnittskarakter:	C	B	C
Antall med legeattest (L):	0	0	0
Antall trekk før eksamen (T):	0	0	0

Karakter	Antall	Antall kvinner
E	1	0
D	0	0
C	12	7
B	7	4
A	1	1

