




Stockholm  
University

# Internationalisation at Stockholm University

Niklas Tranæus, Stockholm University, 2023-10-10



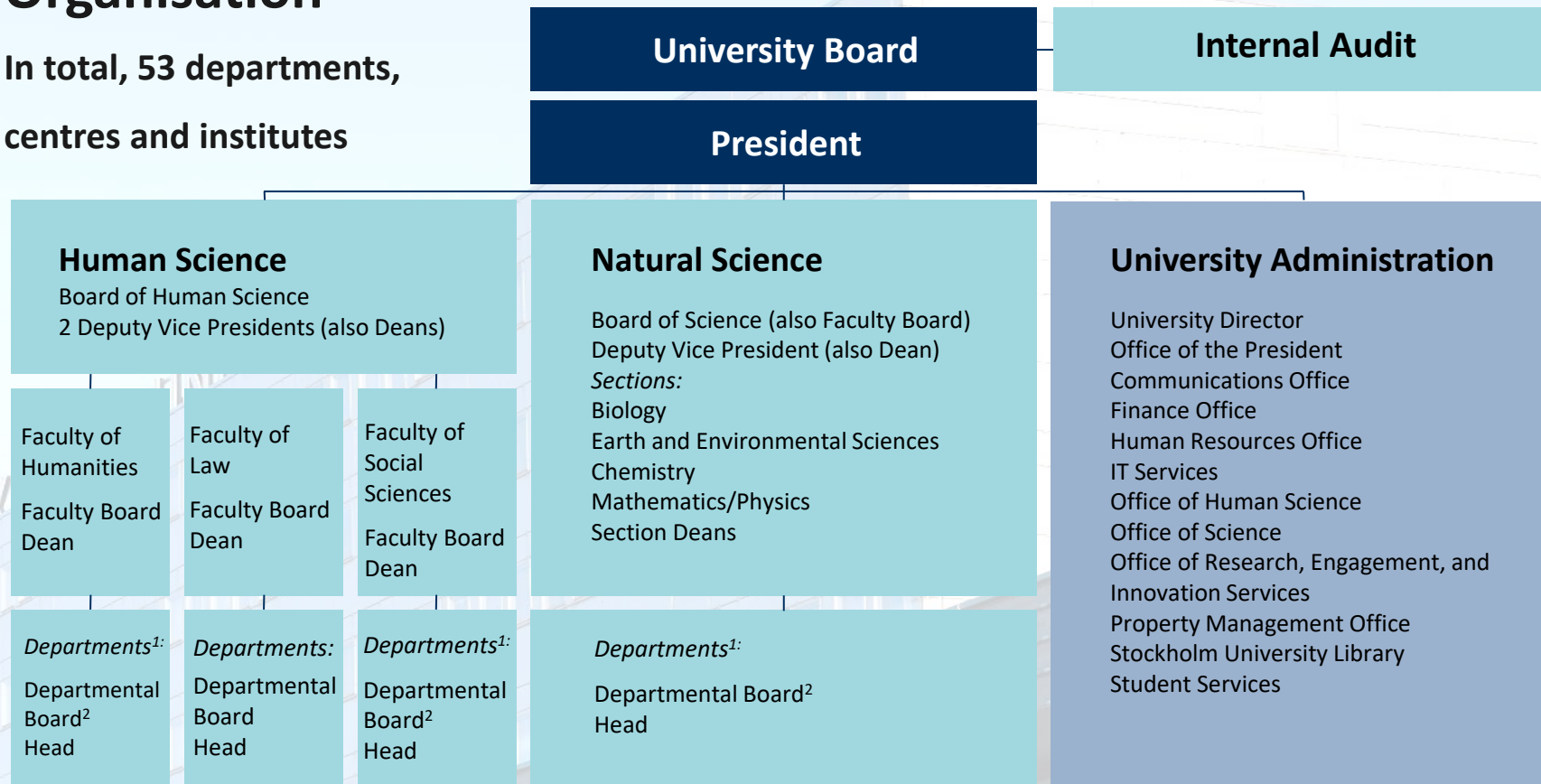
Two areas of education and research:  
*human science and (natural) science*

- Around 30 000 students
- Around 3 000 international students
- 1 400 PhD students
- 5 700 employees
- Around € 550 million in turnover



# Organisation

In total, 53 departments, centres and institutes



1 Or equivalent centre or institute  
2 Or equivalent board



## Some effects of fees

- Internationalisation became more strategic
- Increased brand awareness
- But fees not a big source of income
- Europeanisation



## Key points about internationalisation at SU

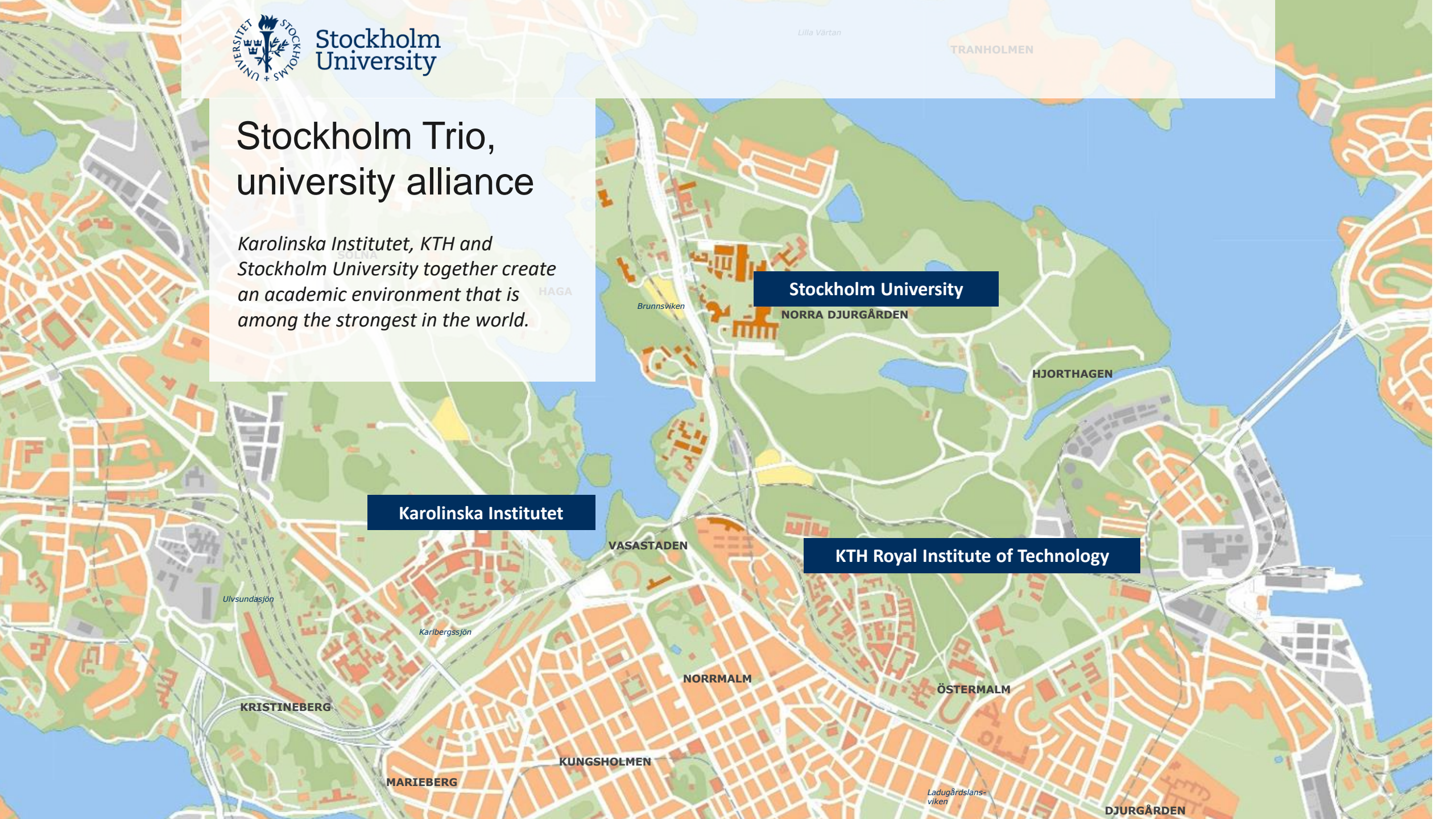
- Strategic International Partnerships with two universities (University of Helsinki and The University of Tokyo)
- Other international partnerships (UCL, University of Manchester, Hebrew University of Jerusalem)
- Around 60 student exchange agreements at central level
- 100s of more agreements at department level



Stockholm  
University

## Stockholm Trio, university alliance

*Karolinska Institutet, KTH and  
Stockholm University together create  
an academic environment that is  
among the strongest in the world.*



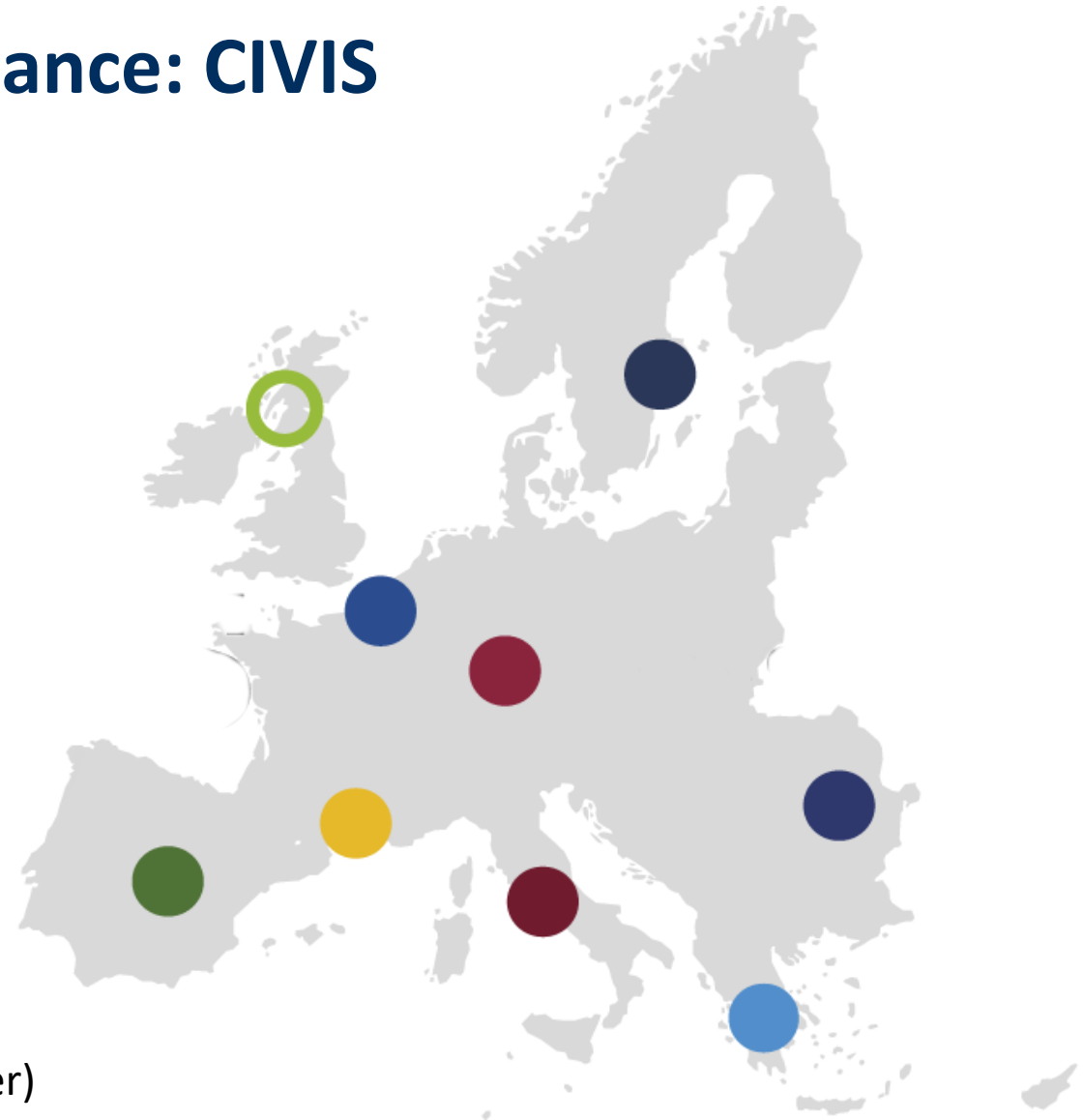
Stockholm University

Karolinska Institutet

KTH Royal Institute of Technology

## European University Alliance: CIVIS

- Austria: Paris Lodron University of Salzburg
- Belgium: Université libre de Bruxelles
- France: Aix-Marseille Université
- Germany: Eberhard Karls Universität Tübingen
- Greece: National and Kapodistrian University of Athens
- Italy: Sapienza Università di Roma
- Romania: University of Bucharest
- Spain: Universidad Autonoma de Madrid
- Sweden: Stockholm University
- Switzerland: University of Lausanne (associated partner)
- United Kingdom: University of Glasgow (associated partner)





Stockholm  
University

## Partnerships under development in CIVIS

- Université Hassan II de Casablanca (Morocco)
- Université Cheikh Anta Diop de Dakar (Senegal)
- Eduardo Mondlane University (Mozambique)
- Makerere University (Uganda)
- University of Sfax (Tunisia)
- University of the Witwatersrand (South Africa)





## Internationalisation with tuition fees

- Students' mind set changes with fees
- Students view an education as an investment
- Can you provide extra funding?
- CRM system – data important!
- National collaboration – of great use