

25. August 2017

MUS2006

Music and Body Movements

Mari Romarheim Haugen



UiO • **Department of Musicology**
University of Oslo

Samba and telespringar



Motion capture lab

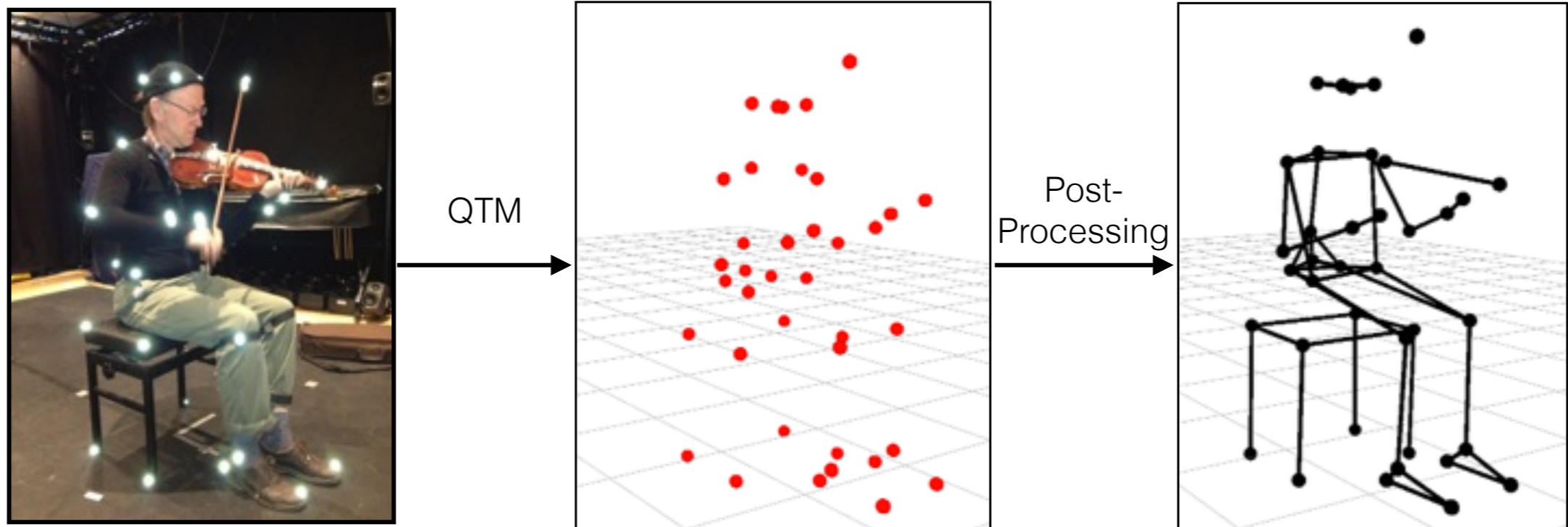


fourMs
Music, Mind, Motion, Machines

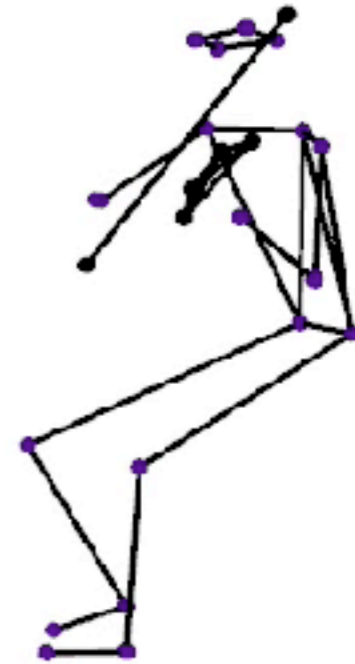
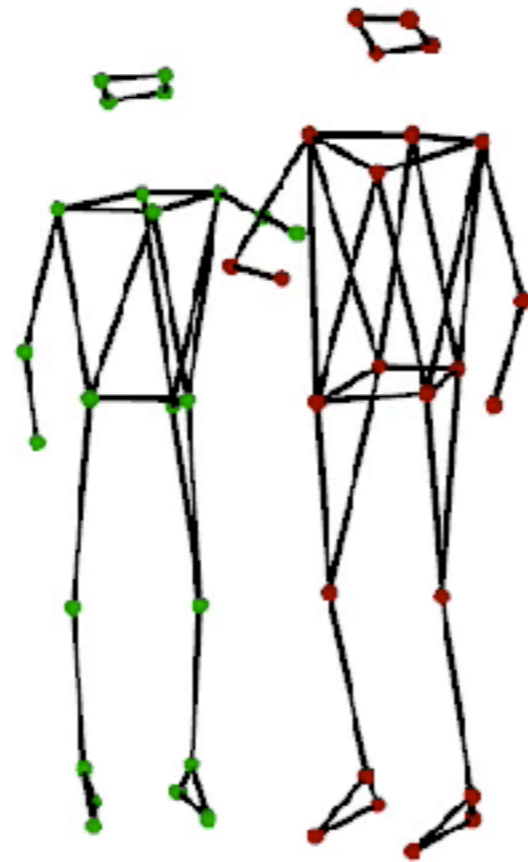
Motion capture



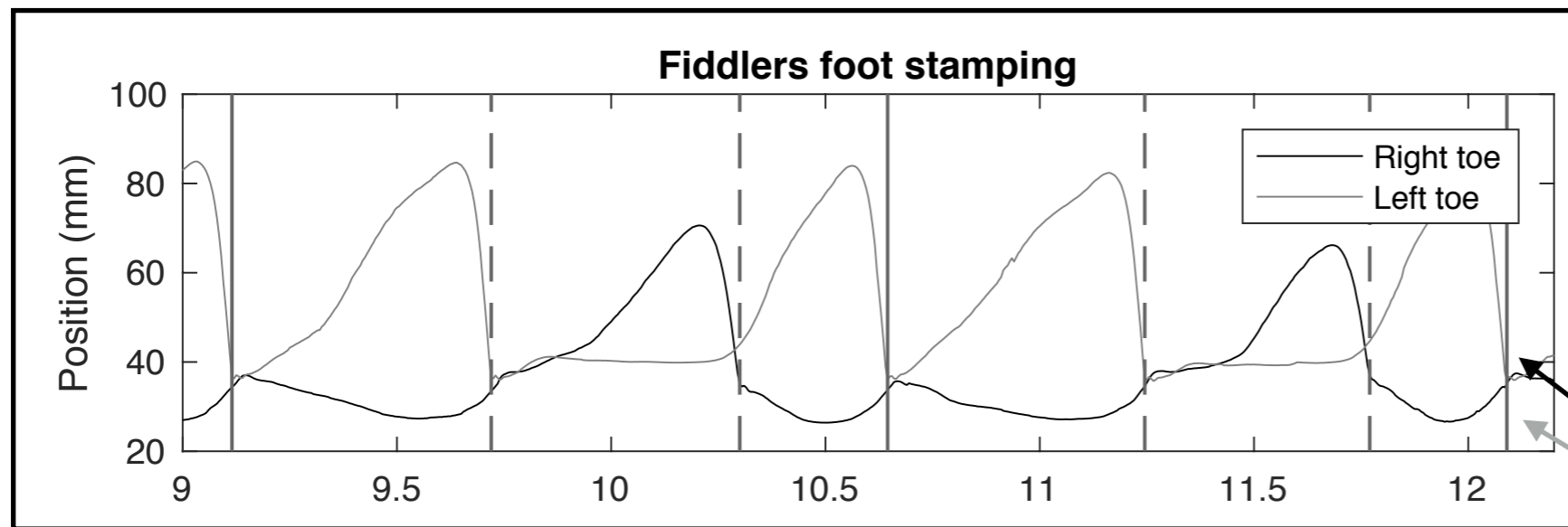
Motion capture



Telespringar



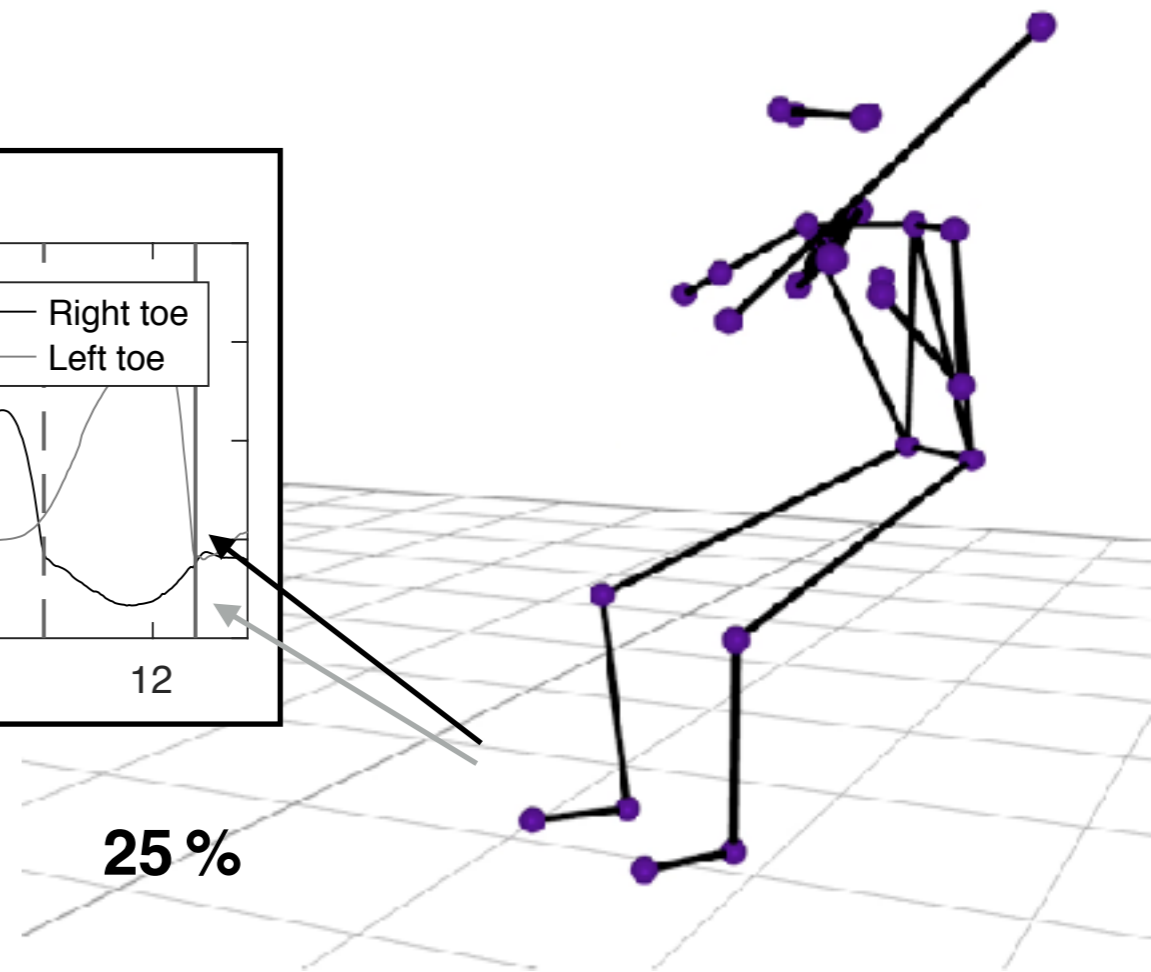
Telespringar



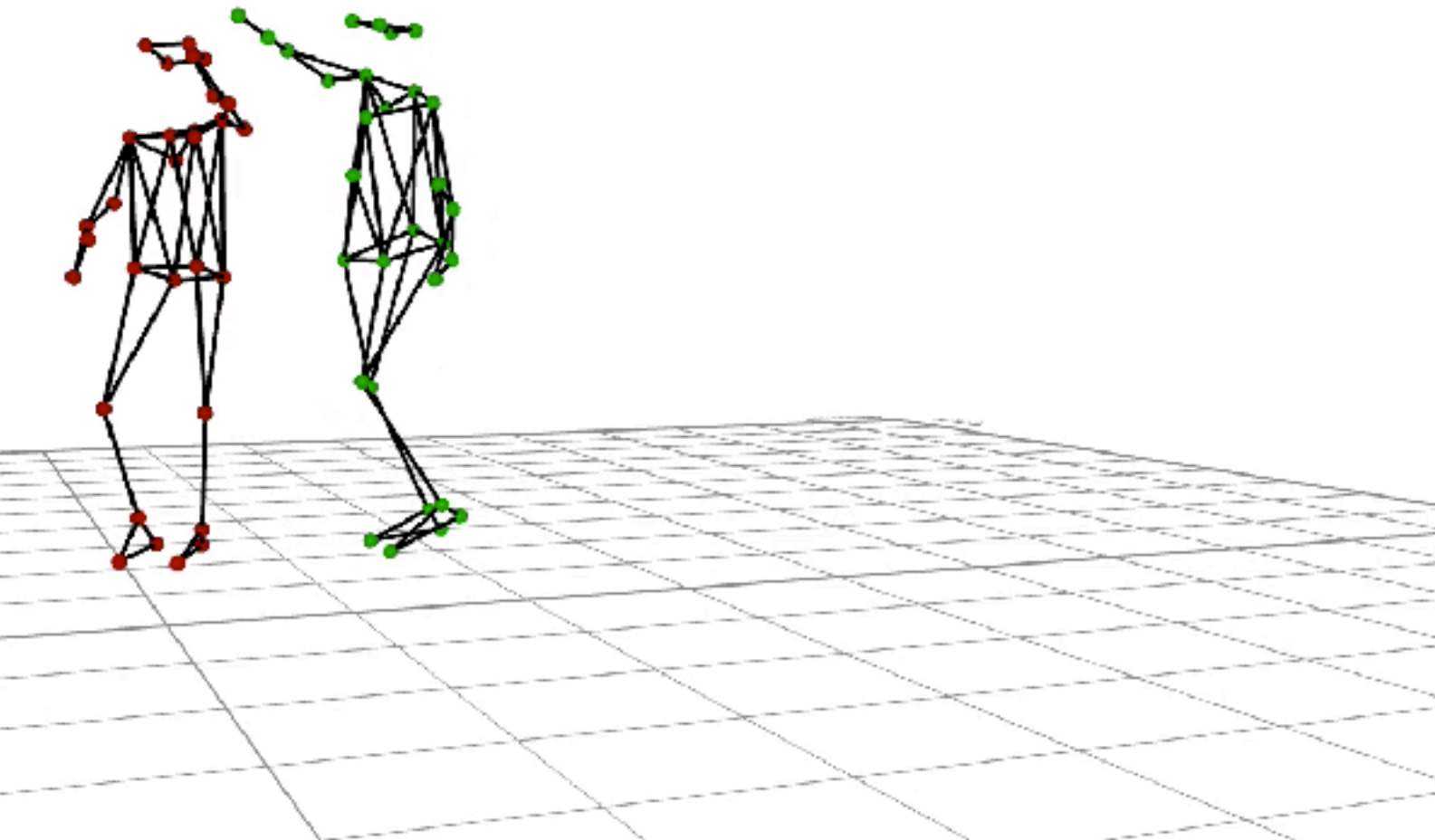
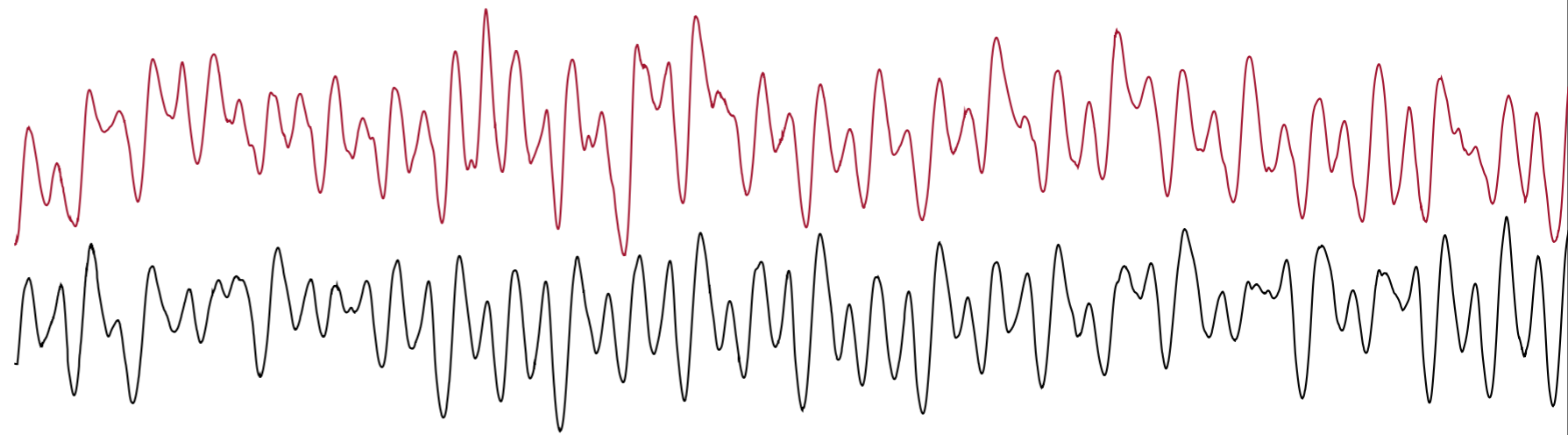
Duration

pattern : 39 36 25 | 39 36 25 %

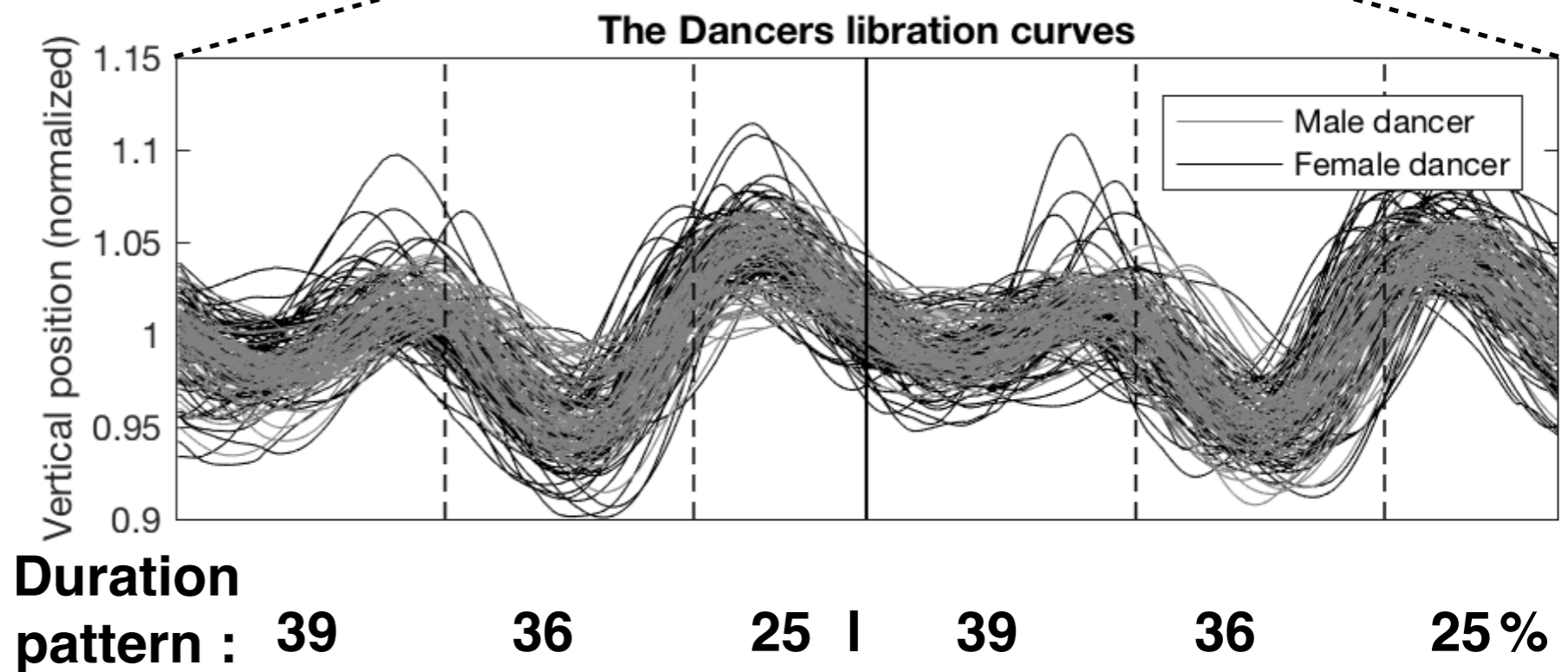
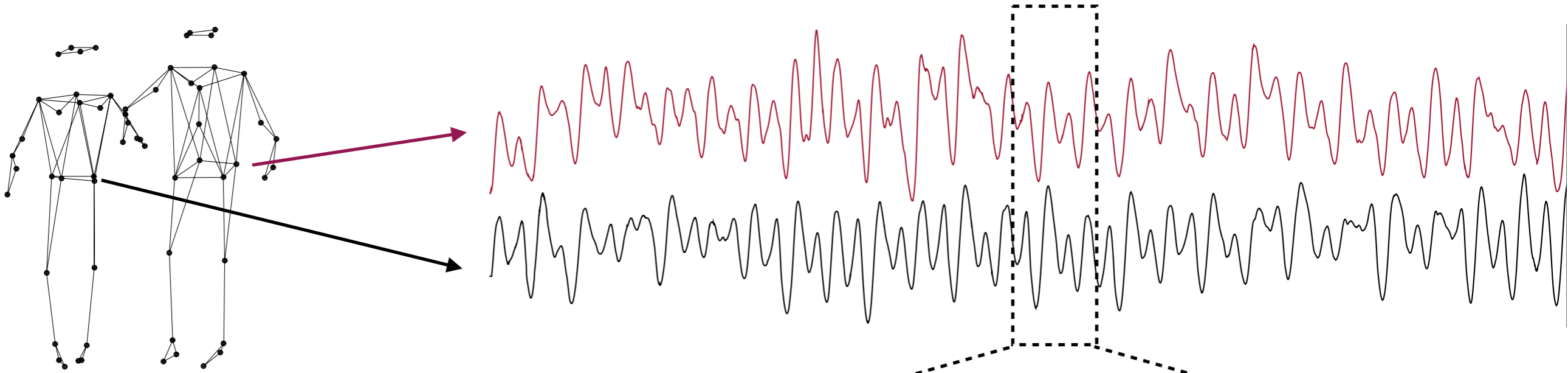
Long – Medium – Short



Telespringar



Telespringar



Samba



Samba

Jingles
Slap
Bass
(high & low)

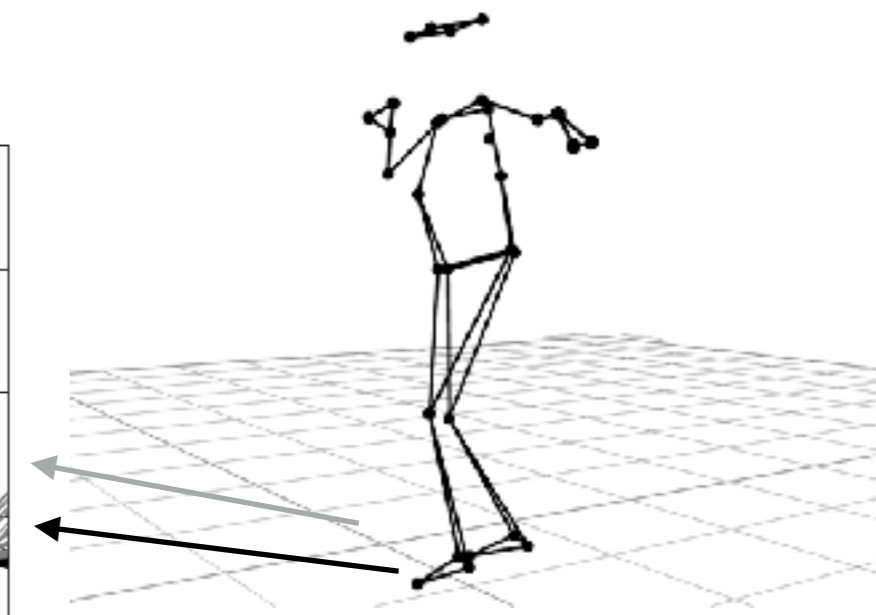
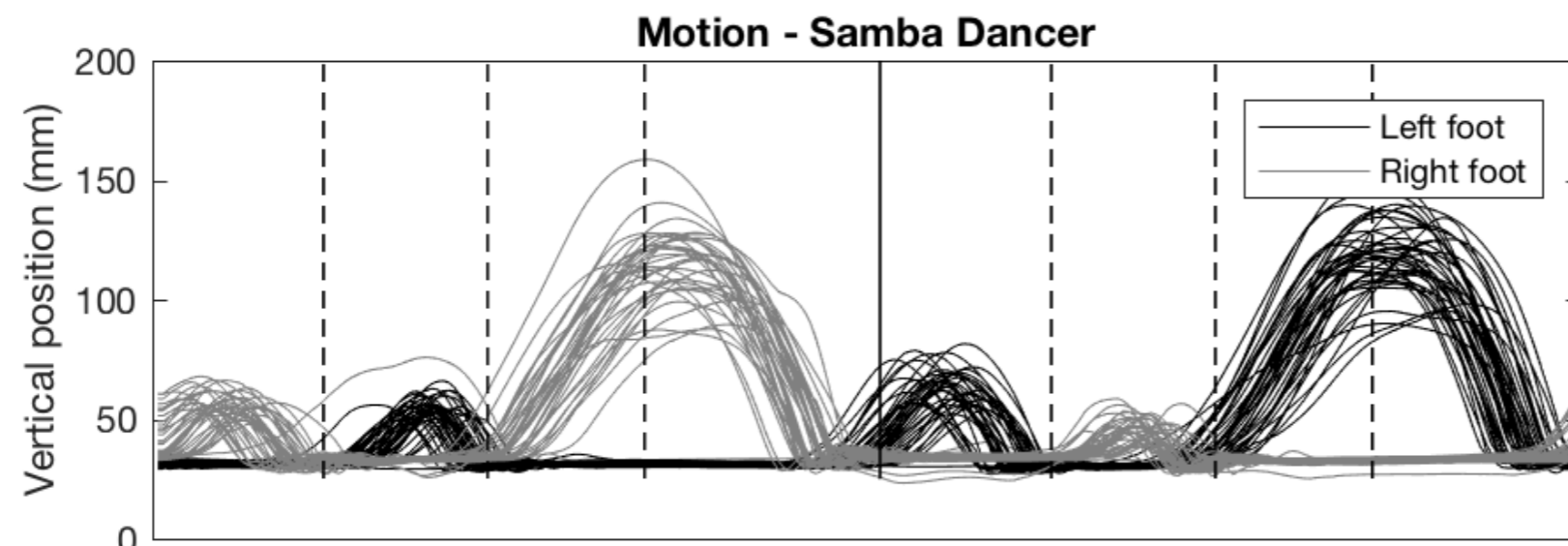
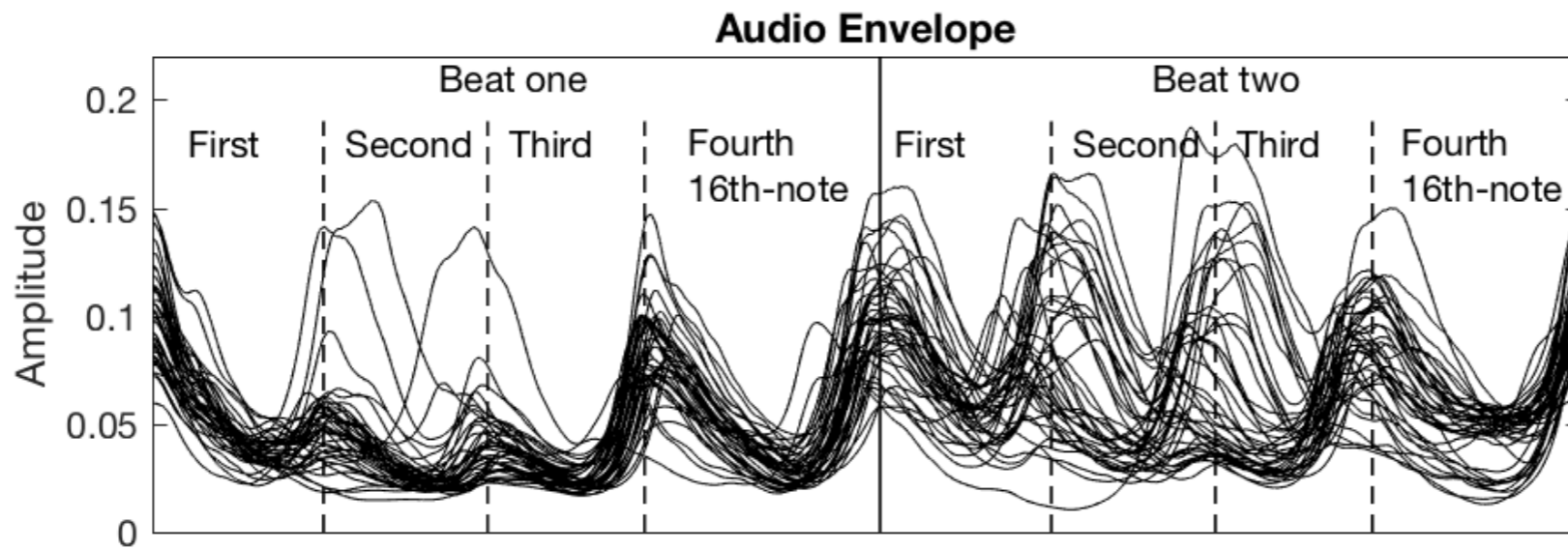
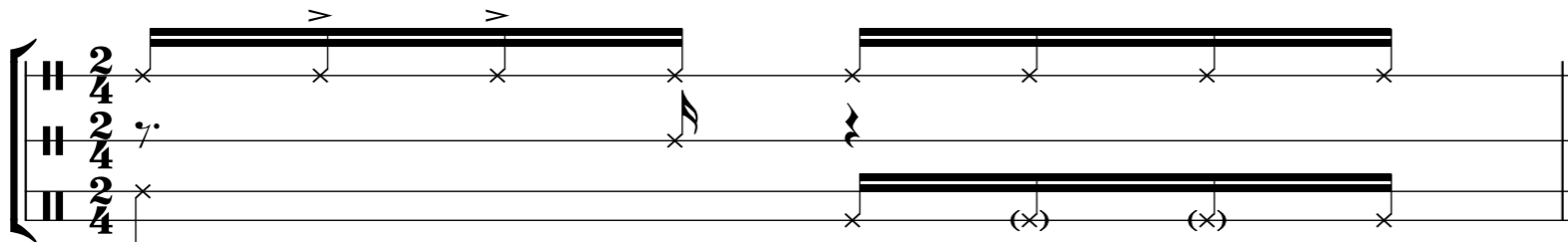
2/4

2/4

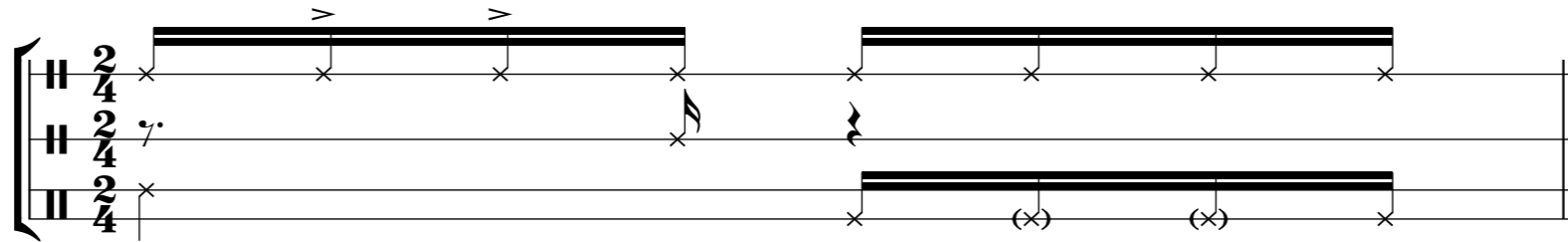
2/4

The image displays a musical score for a Samba piece in 2/4 time. It consists of three staves: Jingles, Slap, and Bass (high & low). The Jingles staff features a repeating eighth-note pattern with accents (>) on the first two notes of each measure. The Slap staff shows a rhythmic pattern with eighth notes and rests, also featuring accents. The Bass staff provides a low-frequency accompaniment with eighth notes and rests, including some notes marked with parentheses. The score is divided into measures by vertical bar lines, and the time signature 2/4 is indicated at the beginning of each staff.

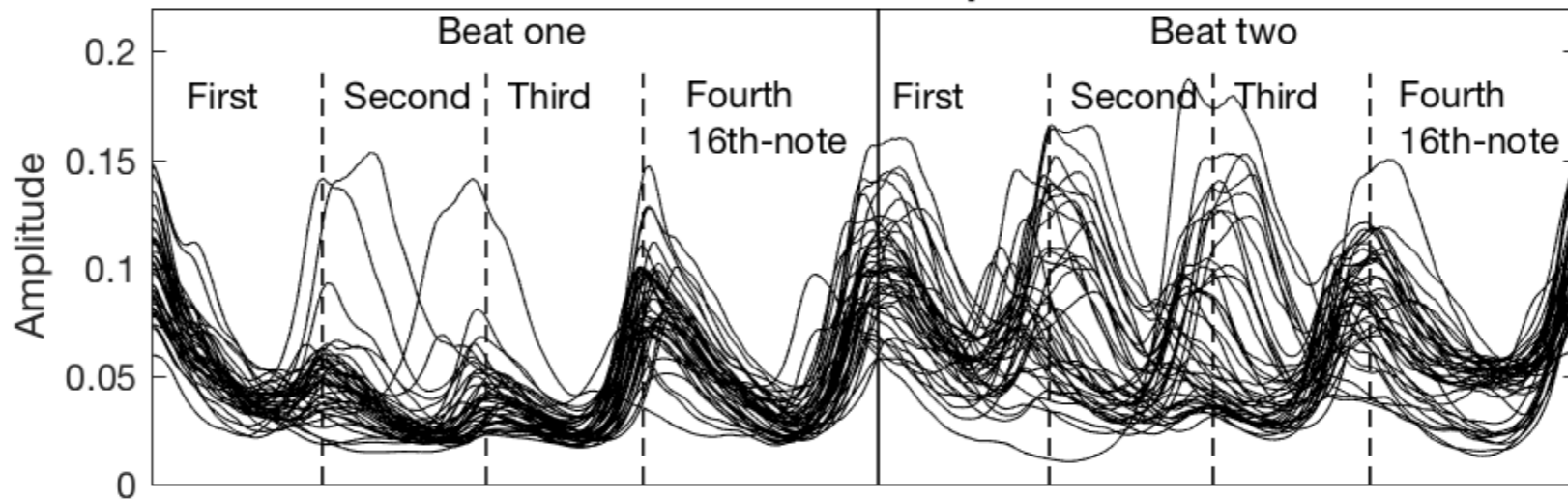
Samba



Samba



Audio Envelope



Motion - Samba Percussionist

