

Musikk og bevegelse

Utøvere

MUS2006 UiO v2011
Alexander Refsum Jensenius

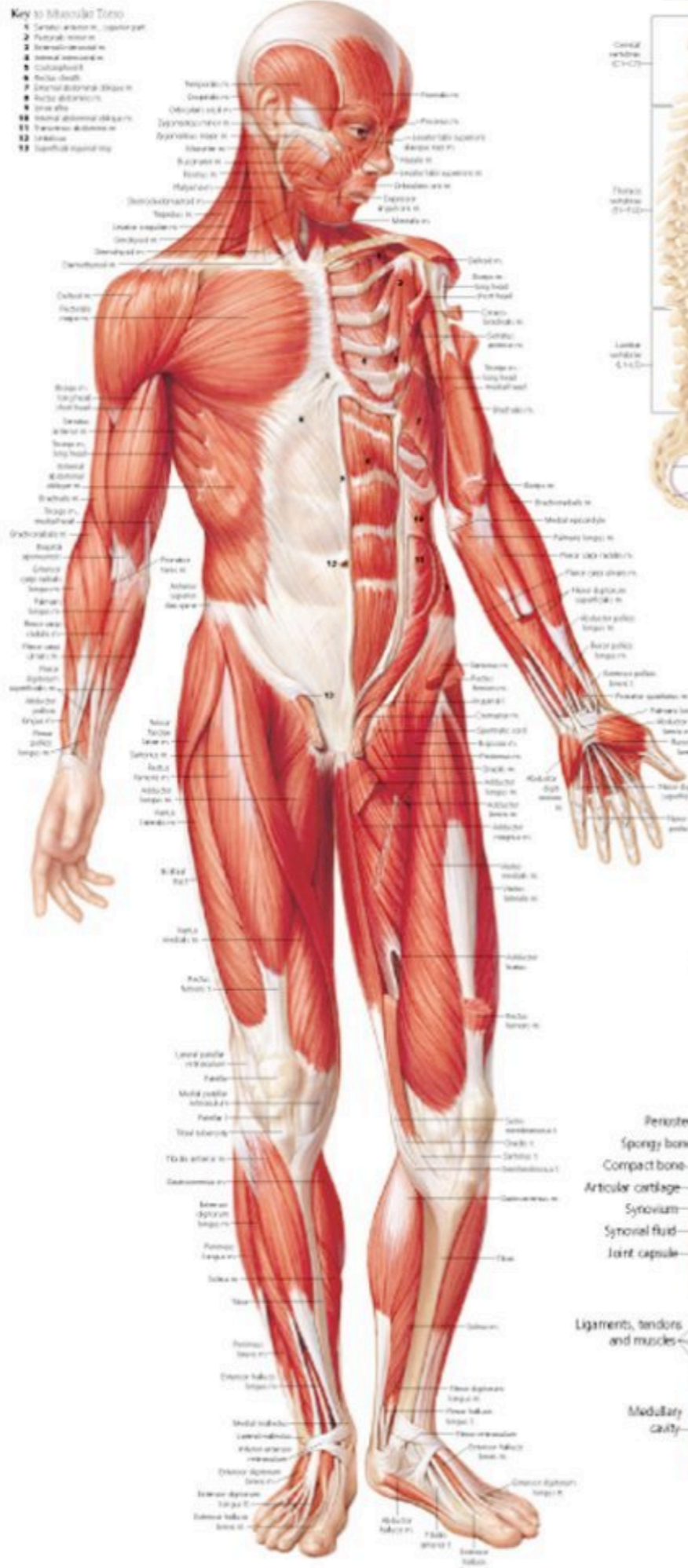
Terminologi

musikkrelaterte bevegelser

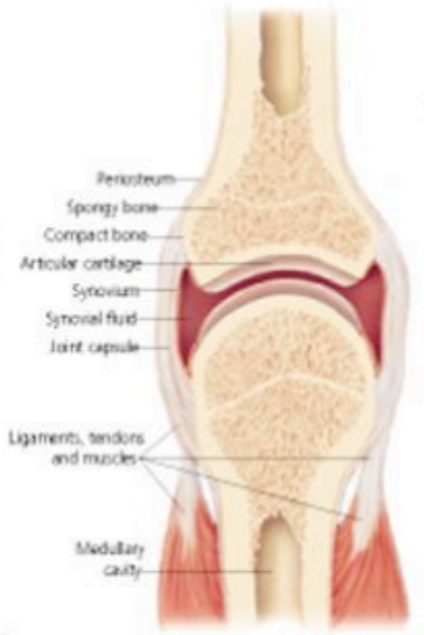
\approx/\neq musikalsk

Kropp

- Key to Muscular Tissue**
- 1. Sarcoplasmic reticulum
 - 2. Myofibrils
 - 3. Sarcomere
 - 4. Z-line
 - 5. Actin
 - 6. Myosin
 - 7. Titin
 - 8. Nucleus
 - 9. Mitochondrion
 - 10. T-tubule
 - 11. Sarcoplasm
 - 12. Myofibril
 - 13. Myofibril bundle



Synovial Joint (Longitudinal Section)



Right Hip Joint (Lateral View)



Right Knee Joint (Anterior View)



Head

Torso



a) Primary

Hands

Feet

Upper back
Shoulders

Elbows



b) Secondary

Knees

Rom

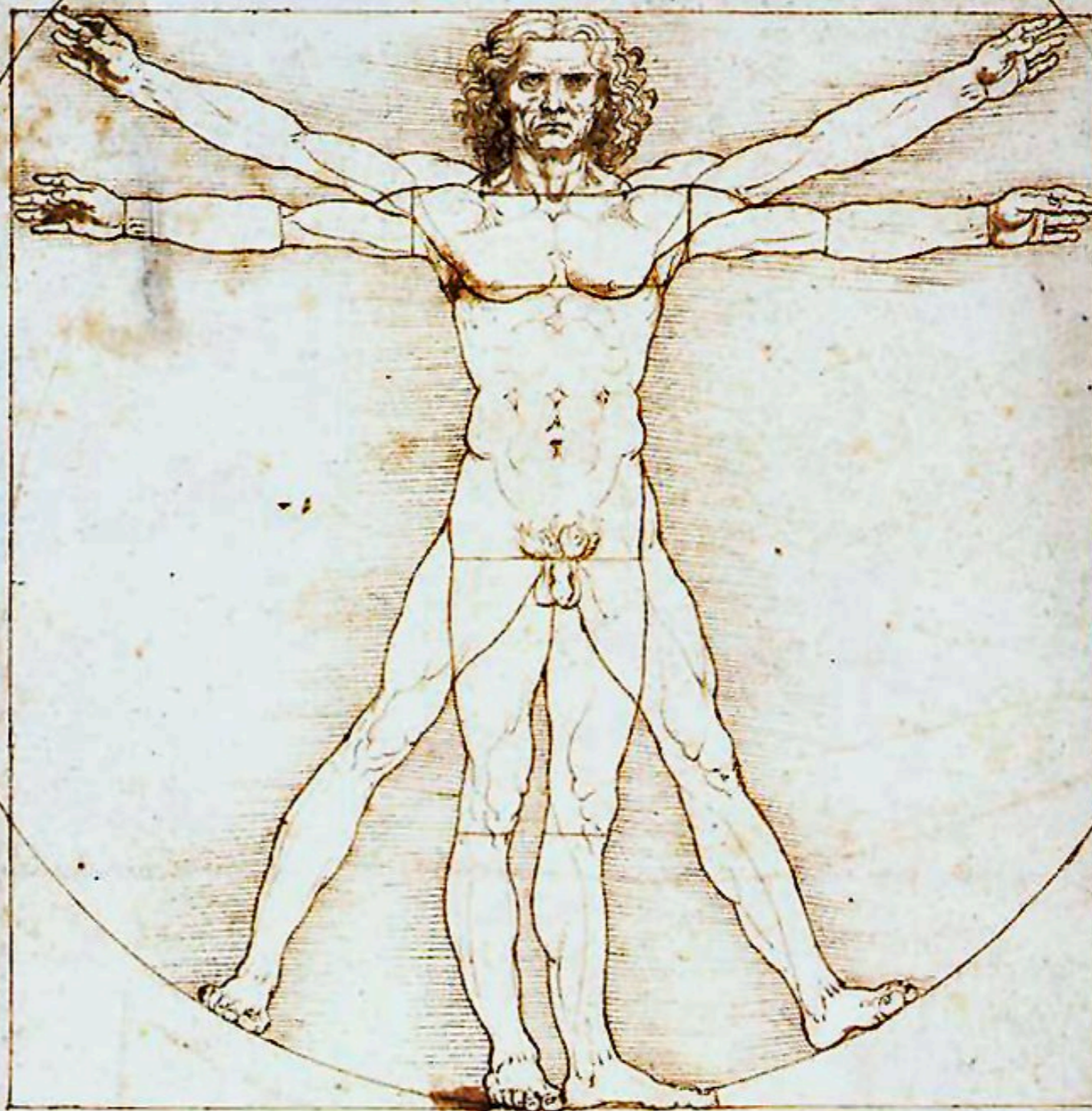
Scenerom
Kroppstrom
Handlingsrom



Scenerom

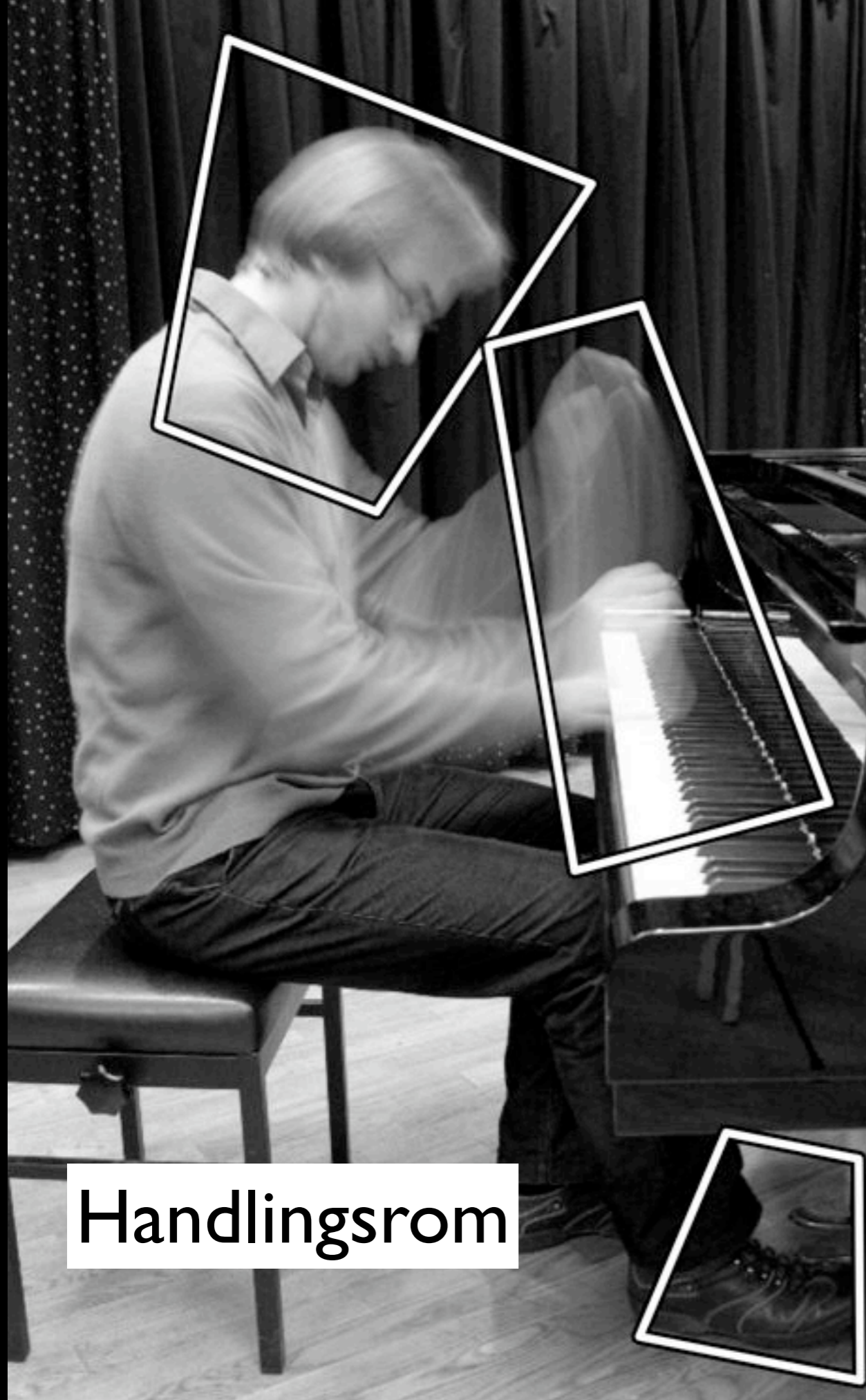


Kinesfære



Kroppssrom

Handwritten text in a historical script, likely Latin or Italian, located at the bottom of the page.



Fraseringsbevegelser

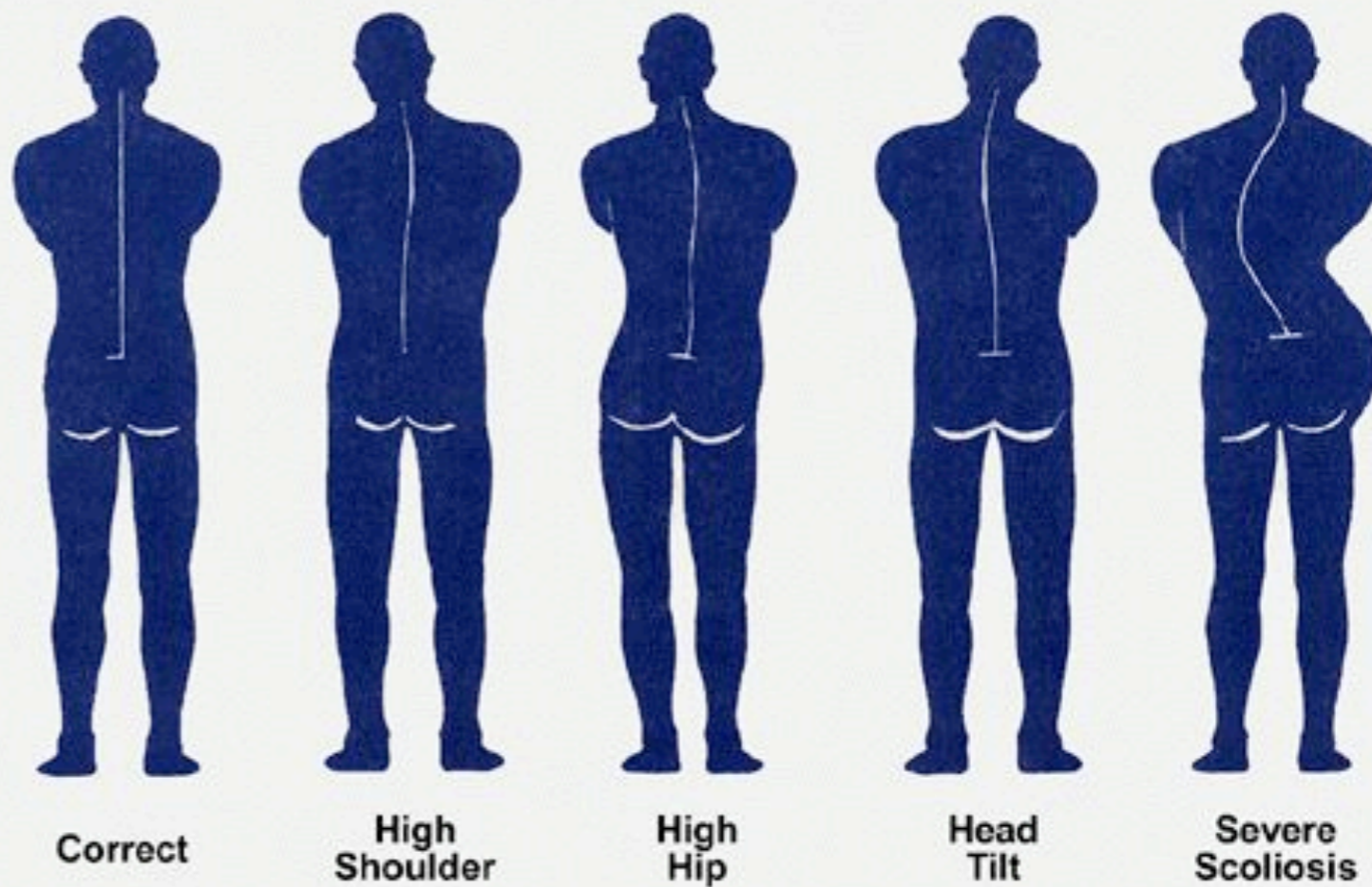
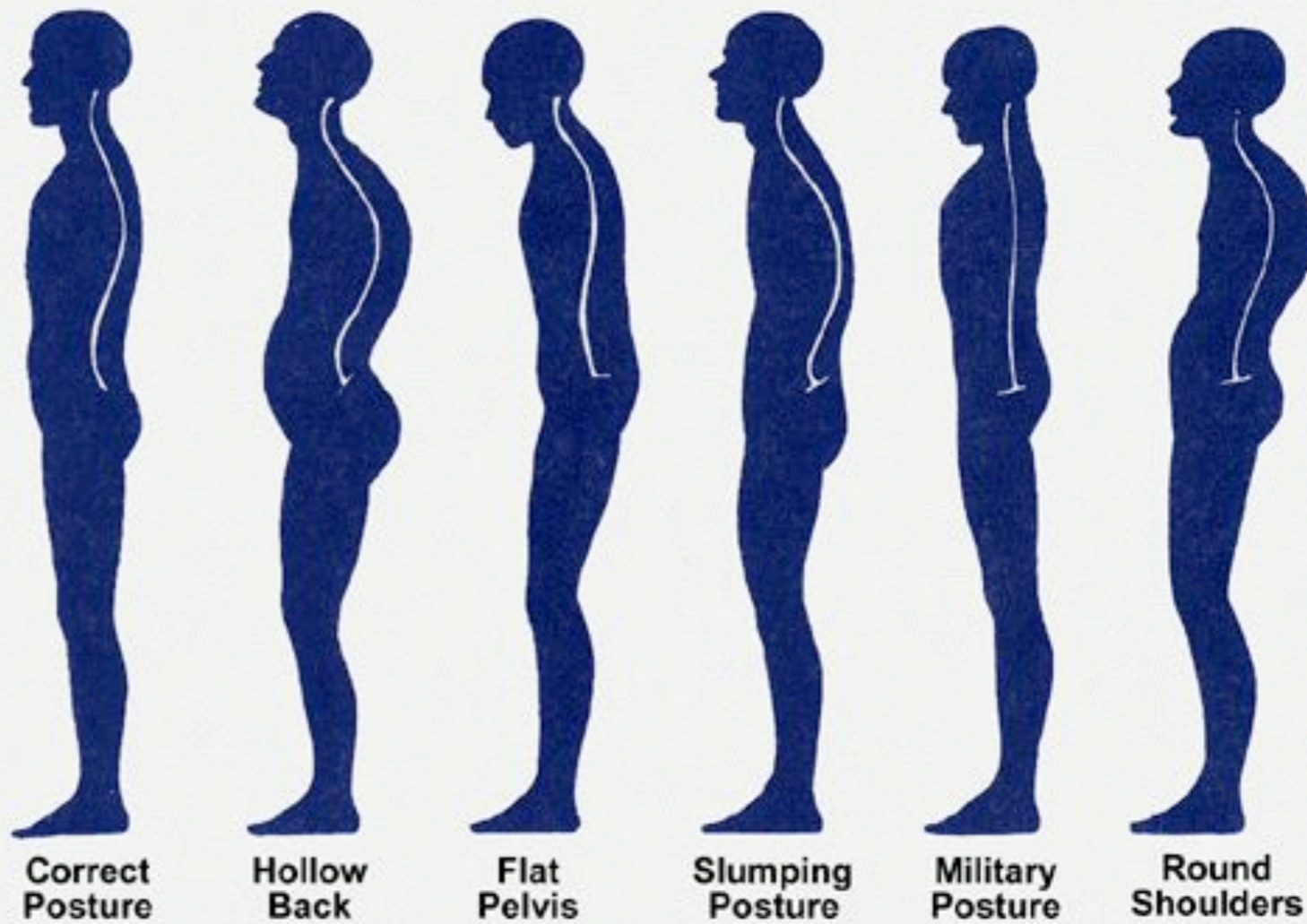
Lydproduserende
handlinger

Lydmodifiserende
handlinger

Handlingsrom

Holdning
Positur
Posisjon

Holdning



Positur





Sceneposisisjon



Grunnposisjon



Startposisjon



Utøvelsesposisjon

Posisjoner

bevegelse
handling
gest

Bevegelser

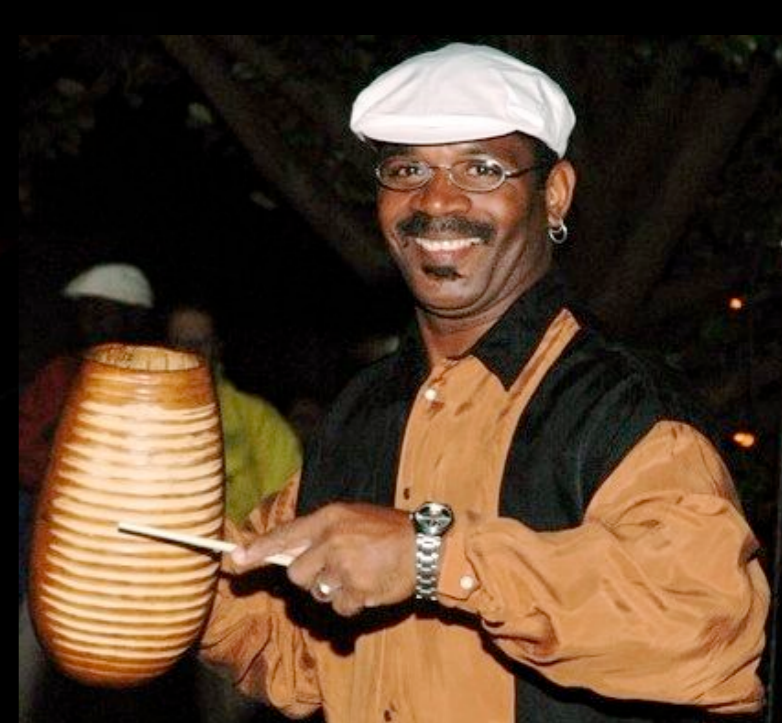
Frivillige
Ufrivillige



Impulsiv



Utholdt



Iterativ

Handling

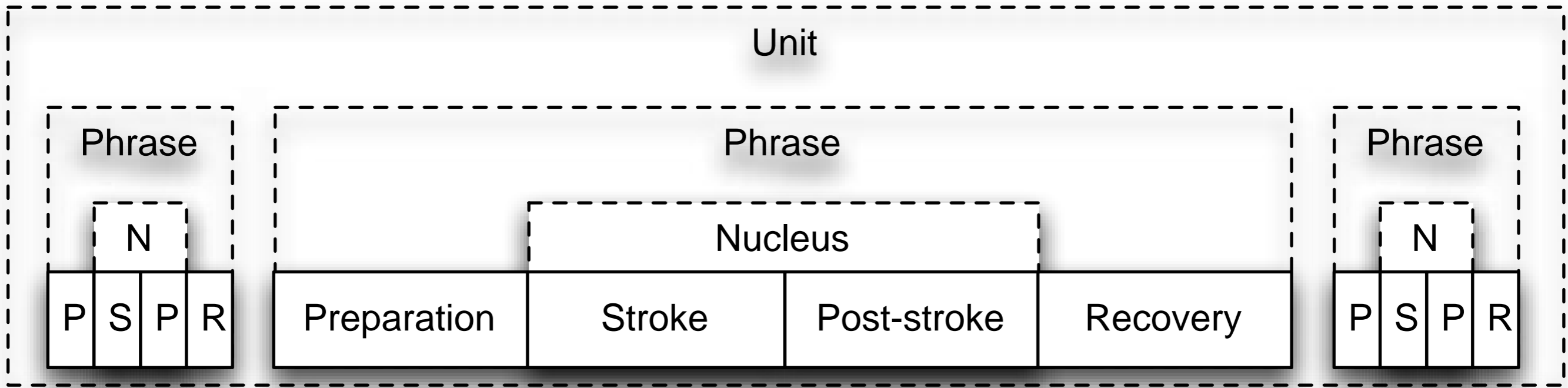


Eksitasjon

Prefiks

Suffiks





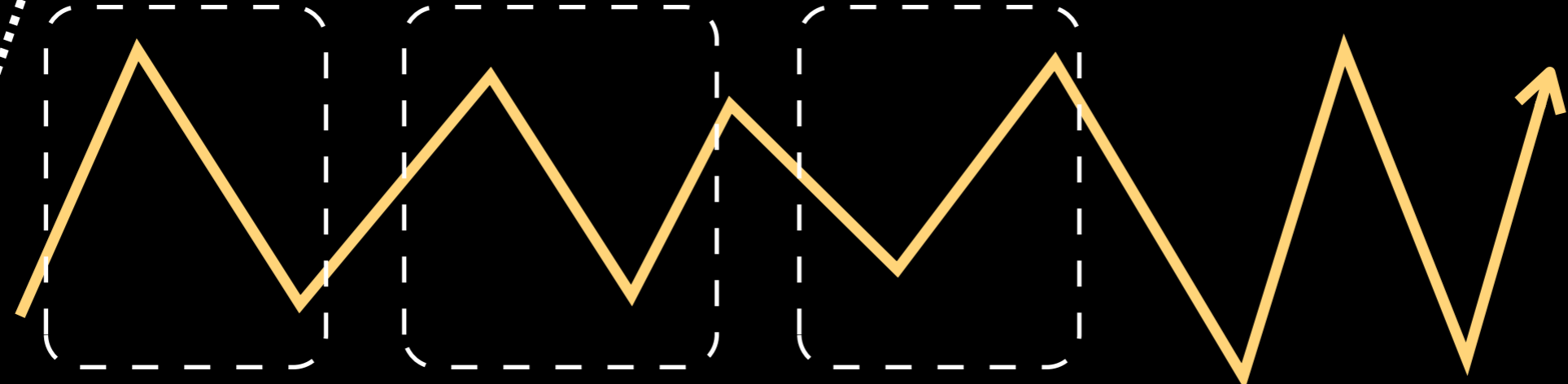
Frihetsgrader

Gest



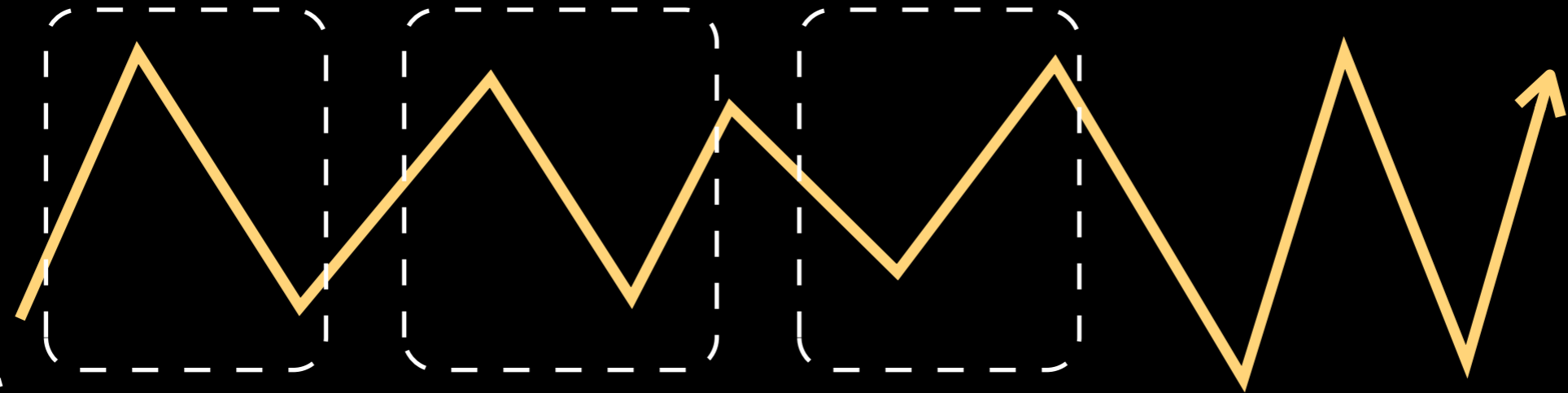
Handling

Bevegelse



Gest

Lyd



Lydobjekt

Bevegelsesanalyse

Deskriptiv:

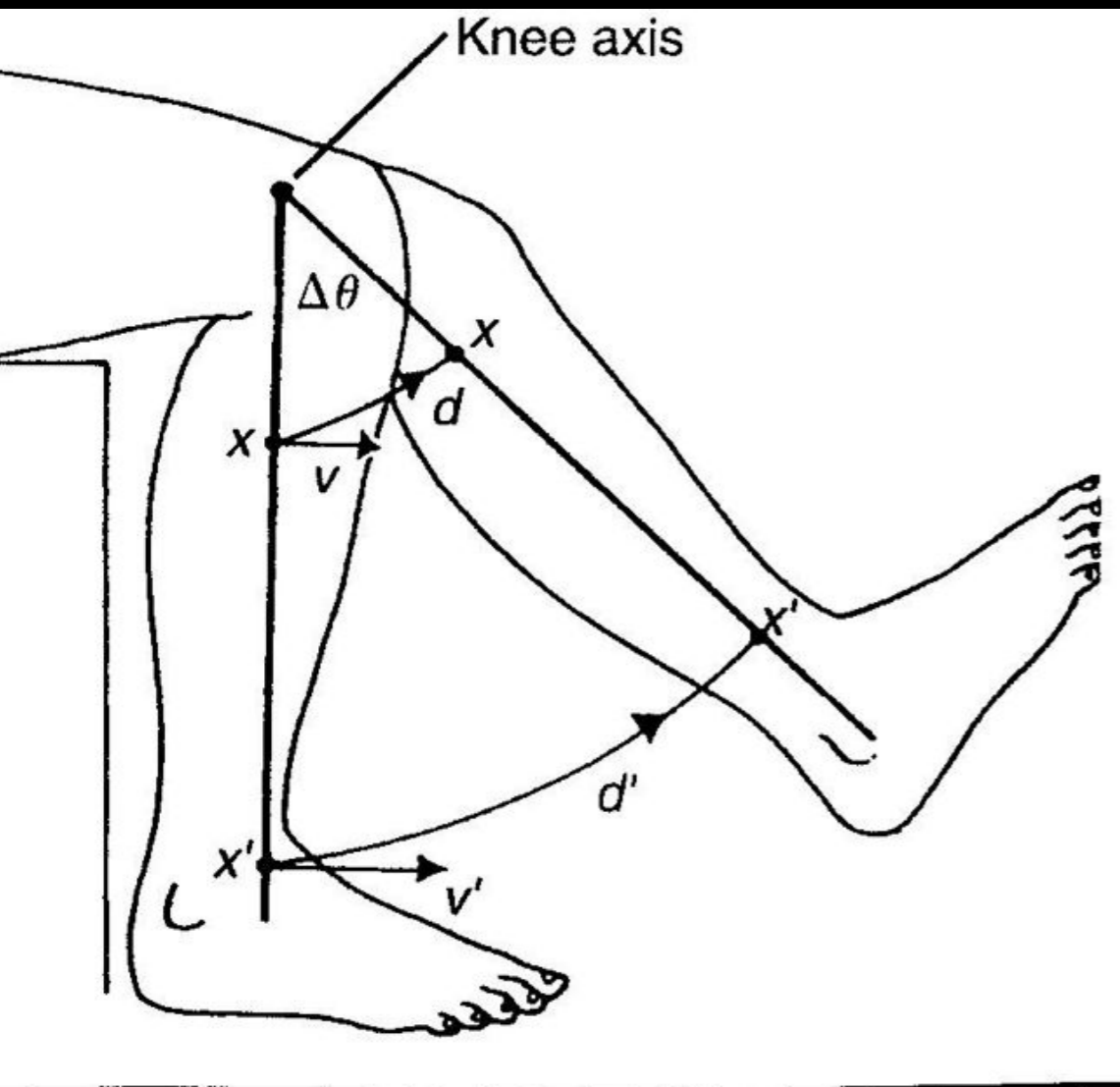
hva skjer fysisk? (hastighet, romlig, tidsmessig, ...)

Funksjonell:

hvilken (semantisk) funksjon har bevegelsen (lydproduserende, modifierende, etc.)

Deskriptiv

Biomekanikk



Session 3\ROM.tvd - Vicon iQ

workspace Help

Post Processing Modelling

VICON iQ

3D Workspace Ortho Top Camera Raw Default

3D Workspace

GeneralPipelineFULL

- CircleFit, Reconstruct, Trajectory
- Camera Health Check
- Load Subject(s)
- Trajectory Labeller
- Trim Tails
- Filter Using a Butterworth Function
- Filter Using Weighted Point Average
- Fill Gaps using Splines
- Fill Gaps Rigid Body
- Fill Gaps using Splines
- Fill Gaps Rigid Body
- Fill Gaps using Virtual Points
- Fill Gaps using Splines
- Kinematic Fit
- Fill Gaps using Kinematic Model
- Delete Unlabeled Trajectories
- Export data to C3D file

GeneralPipelineFULL : 100%

Operation: Delete Unlabeled Trajectories Succeeded.

2324 1 3050

00:00:19:043 Options

Left Right General

View

- Markers
- Sticks
- Bounding Boxes
- Parameter Links
- Timebar

Displayed Subjects

- Gnome

Camera Options

Frame Selected Frame All

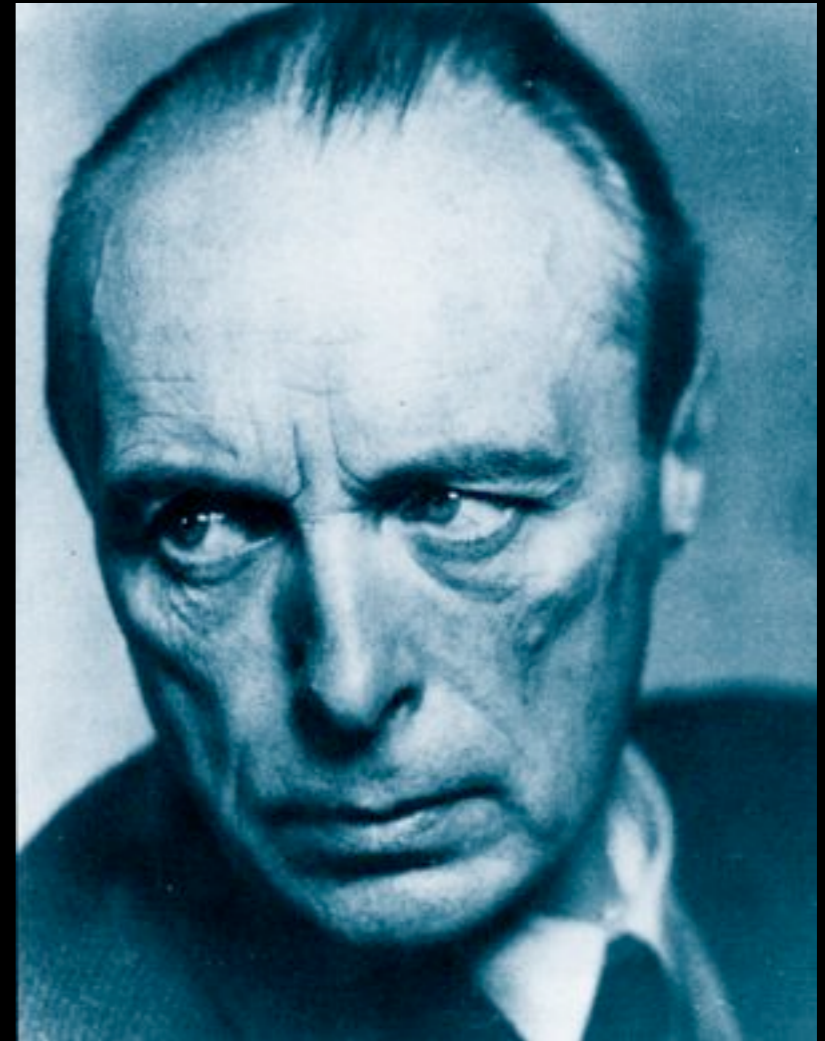
Focus on Selection

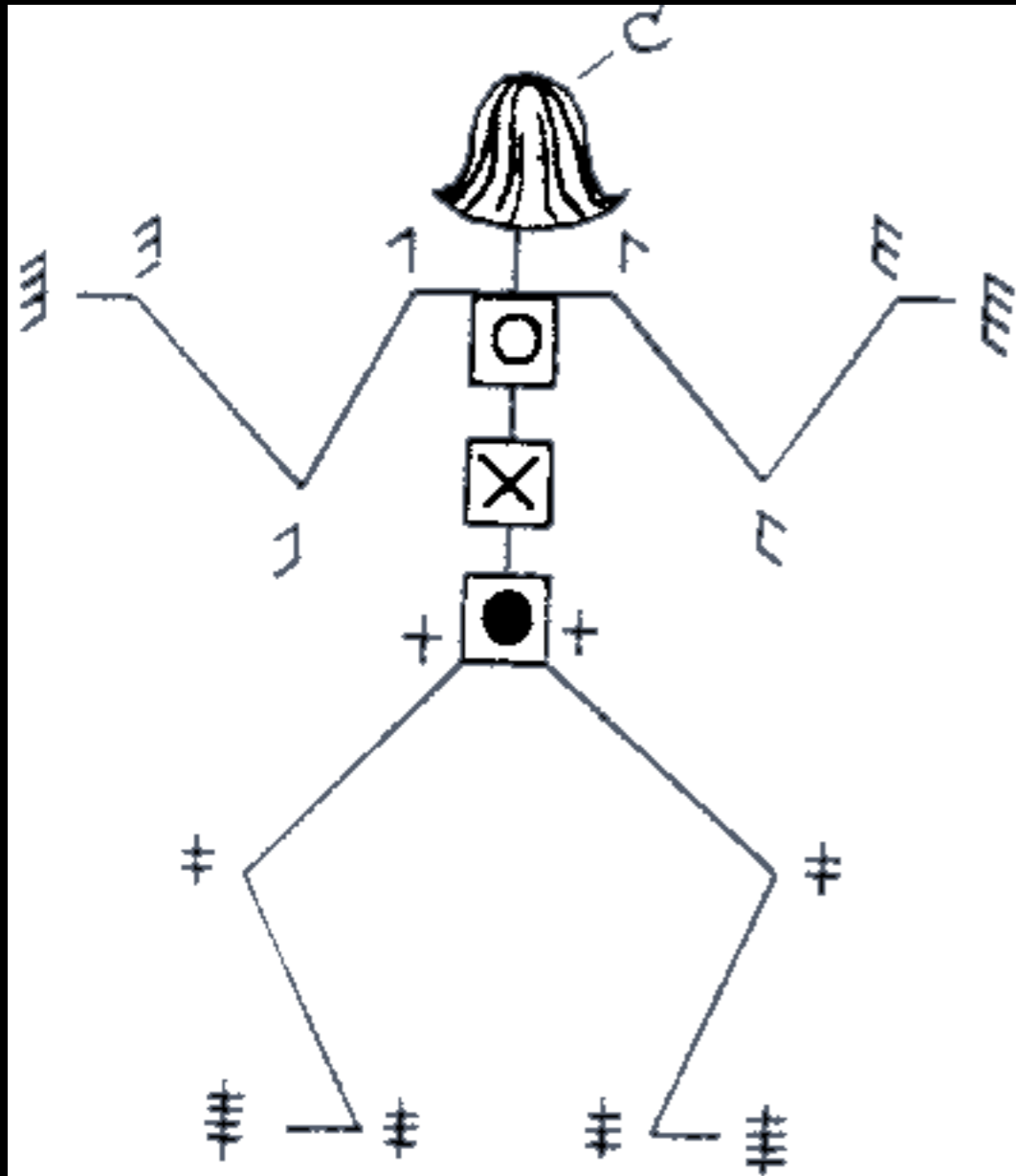
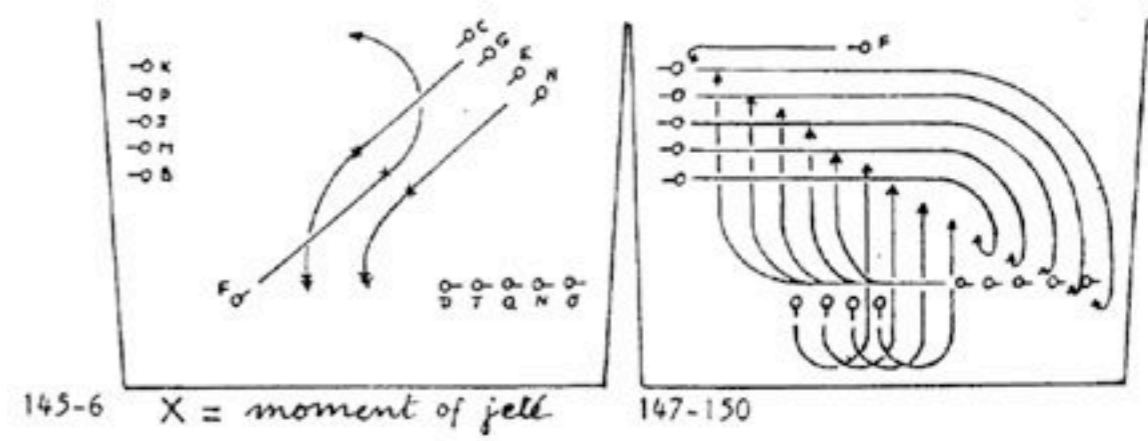
Follow Selection

Set Camera Lock Markers

Lock Camera

Rudolf Laban (1879-1958)

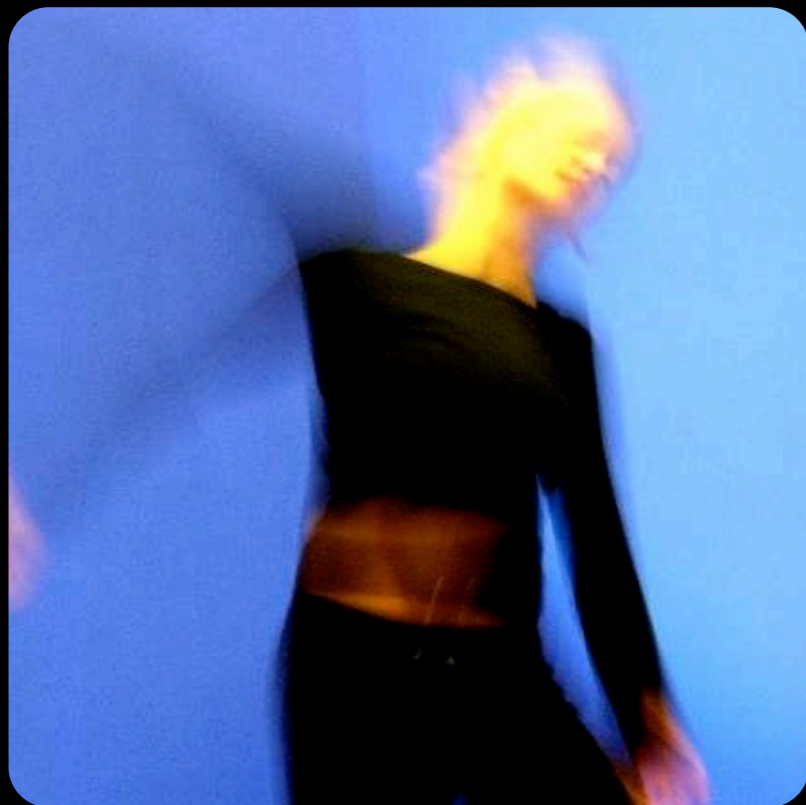


145-6 X = moment of jell

147-150

Labanotasjon



Laban Movement Analysis (Effort)

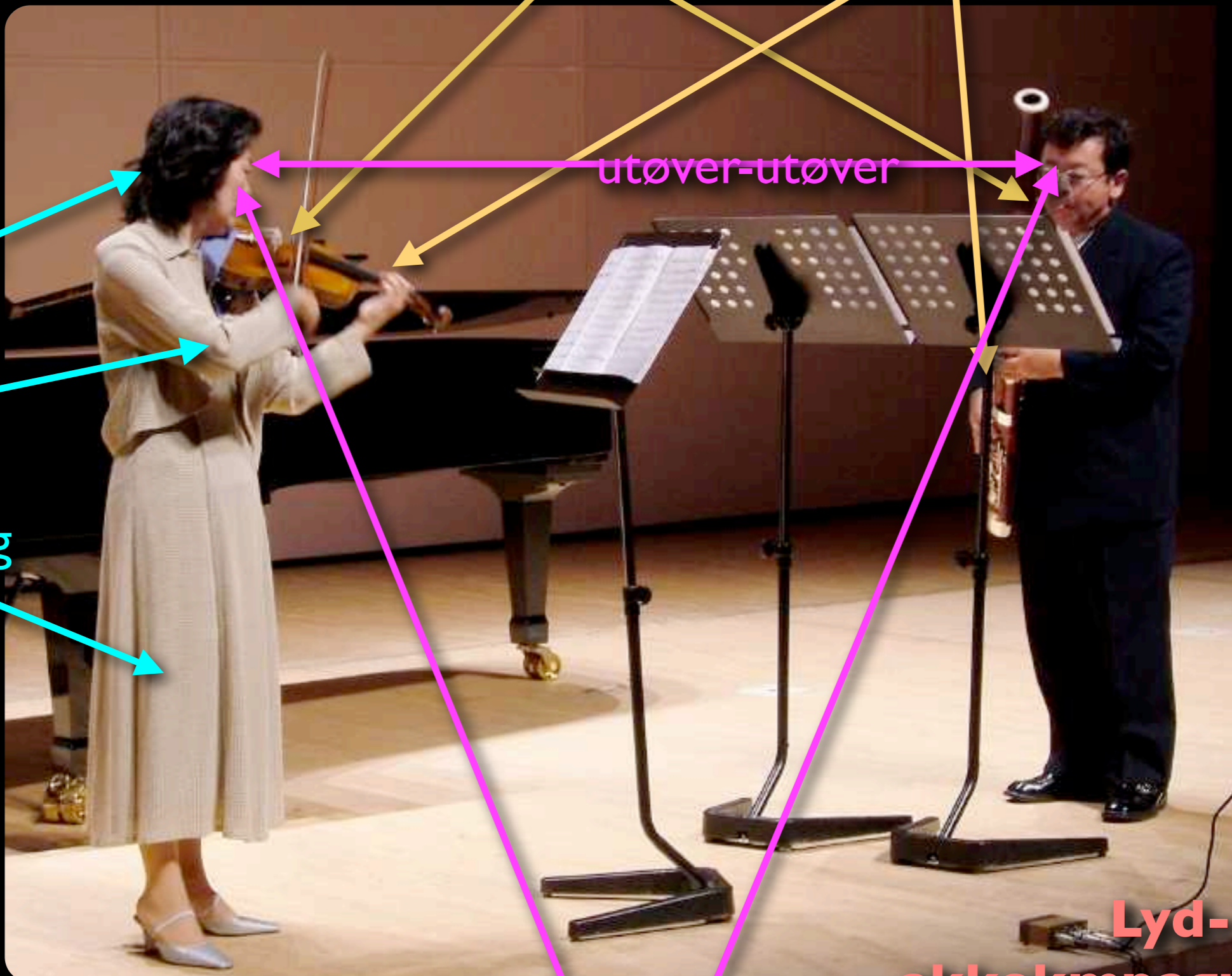
Space	Direct	Indirect
Weight	Light	Strong
Time	Sustained	Sudden
Flow	Free	Bound

funksjonell

lydproduserende:

eksitasjon

modifikasjon



støtte:

frasering

hjelp

Tiltrekning

utøver-utøver

kommunikativ:

utøver-sanser

Lyd-
akkompagnerende
rytmisk, miming, skissering, , ...

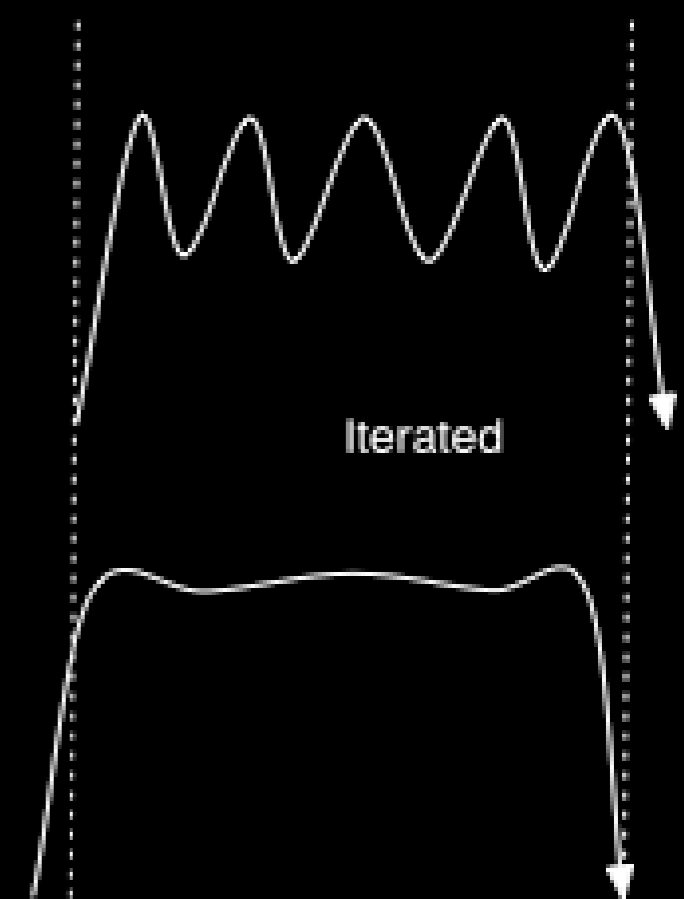
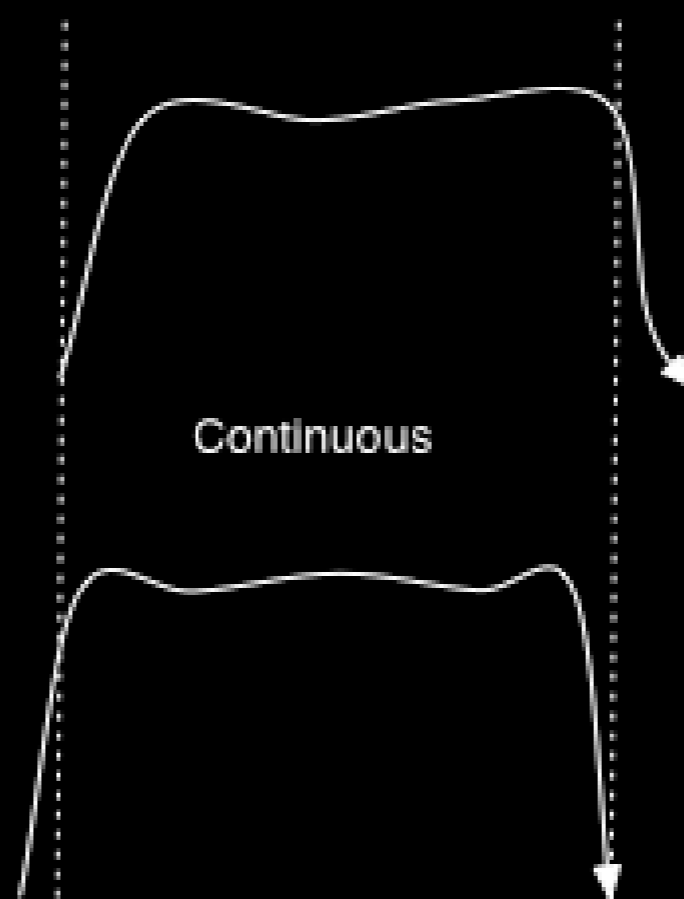
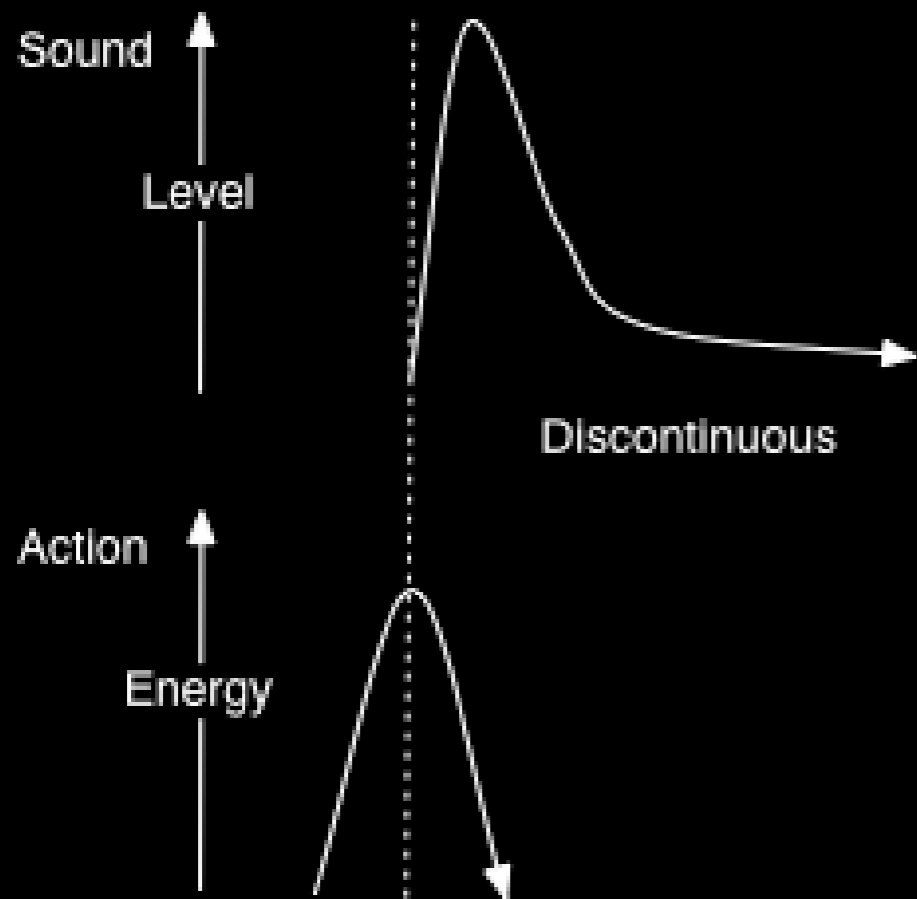
Lydproduserende



Impulsiv

Utholdt

Iterativ



time

Støttebevegelser

hjelp
frasering
tiltrekning

Kommunikative bevegelser (gester)

Ikoner
Metaforer
Slag
Peking
Emblemer



