

Musikk og bevegelse

Utøvere

MUS2006 UiO v2013
Alexander Refsum Jensenius

Utøvere

Sansere

Utøvere



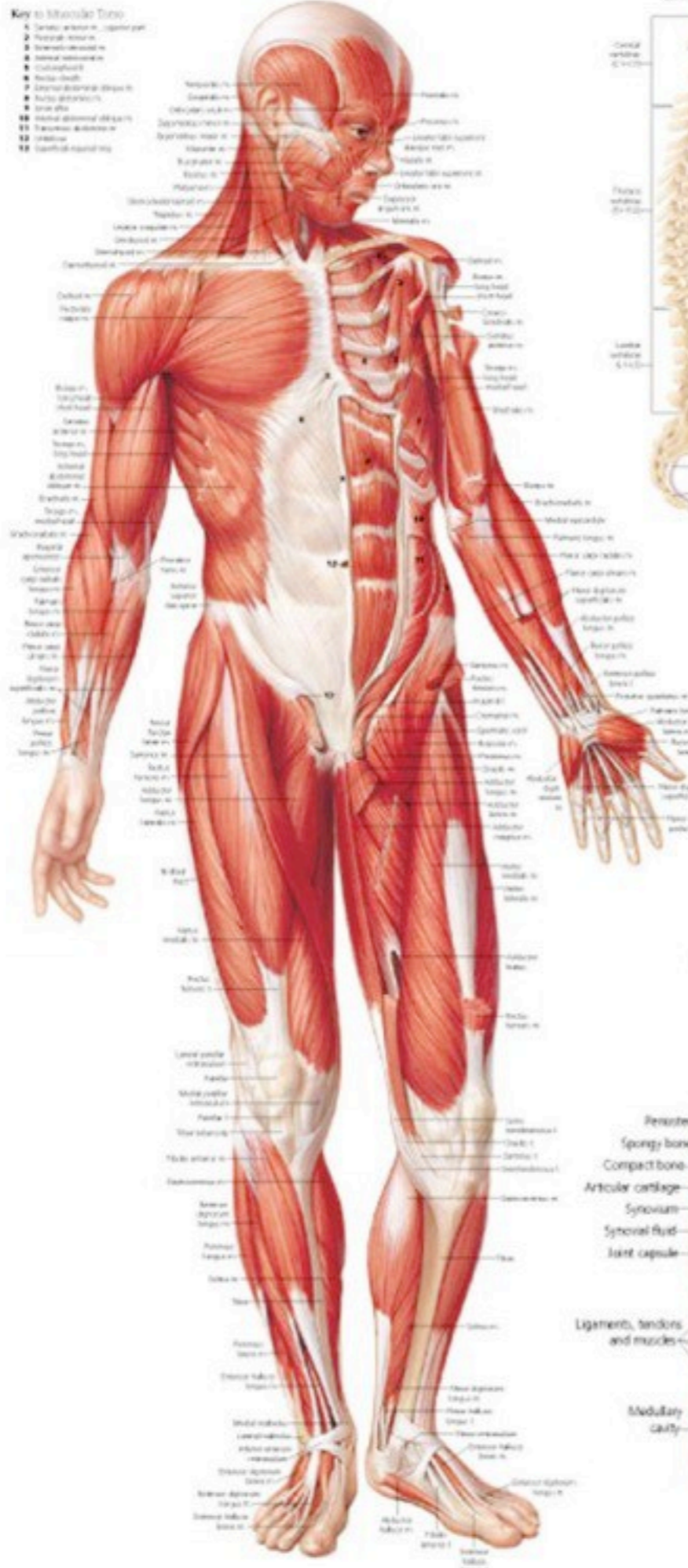
Terminologi

musikkrelaterte bevegelser

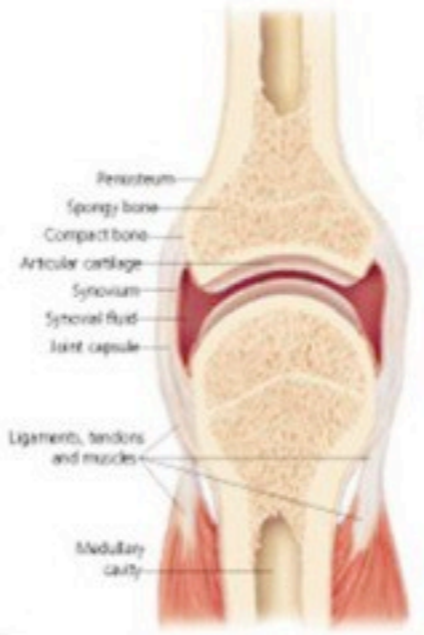
\approx/\neq musikalsk

Kropp

- Key to Intracostal Tissue**
- 1. Serratus anterior (superior part)
 - 2. Pectoralis minor m.
 - 3. Intercostal muscles m.
 - 4. External intercostal m.
 - 5. External intercostal m.
 - 6. External intercostal m.
 - 7. External intercostal m.
 - 8. External intercostal m.
 - 9. External intercostal m.
 - 10. External intercostal m.
 - 11. External intercostal m.
 - 12. External intercostal m.
 - 13. External intercostal m.
 - 14. External intercostal m.
 - 15. External intercostal m.



Synovial Joint (Longitudinal Section)



Right Hip Joint (Anterior View)



Right Knee Joint (Anterior View)



Head

Torso



a) Primary

Hands

Feet

Upper back
Shoulders

Elbows

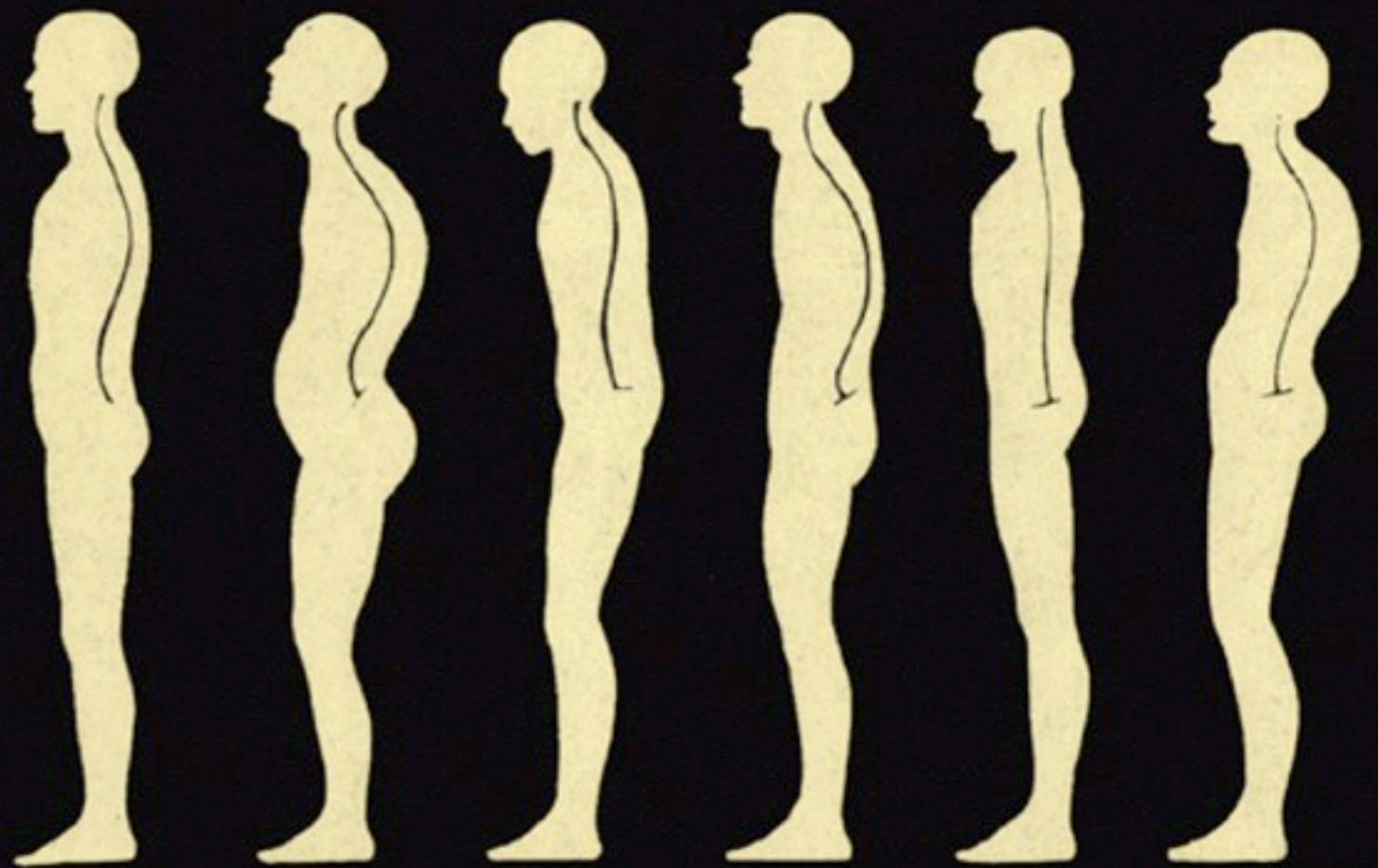


b) Secondary

Knees

Holdning
Positur
Posisjon

Holdning



Correct Posture

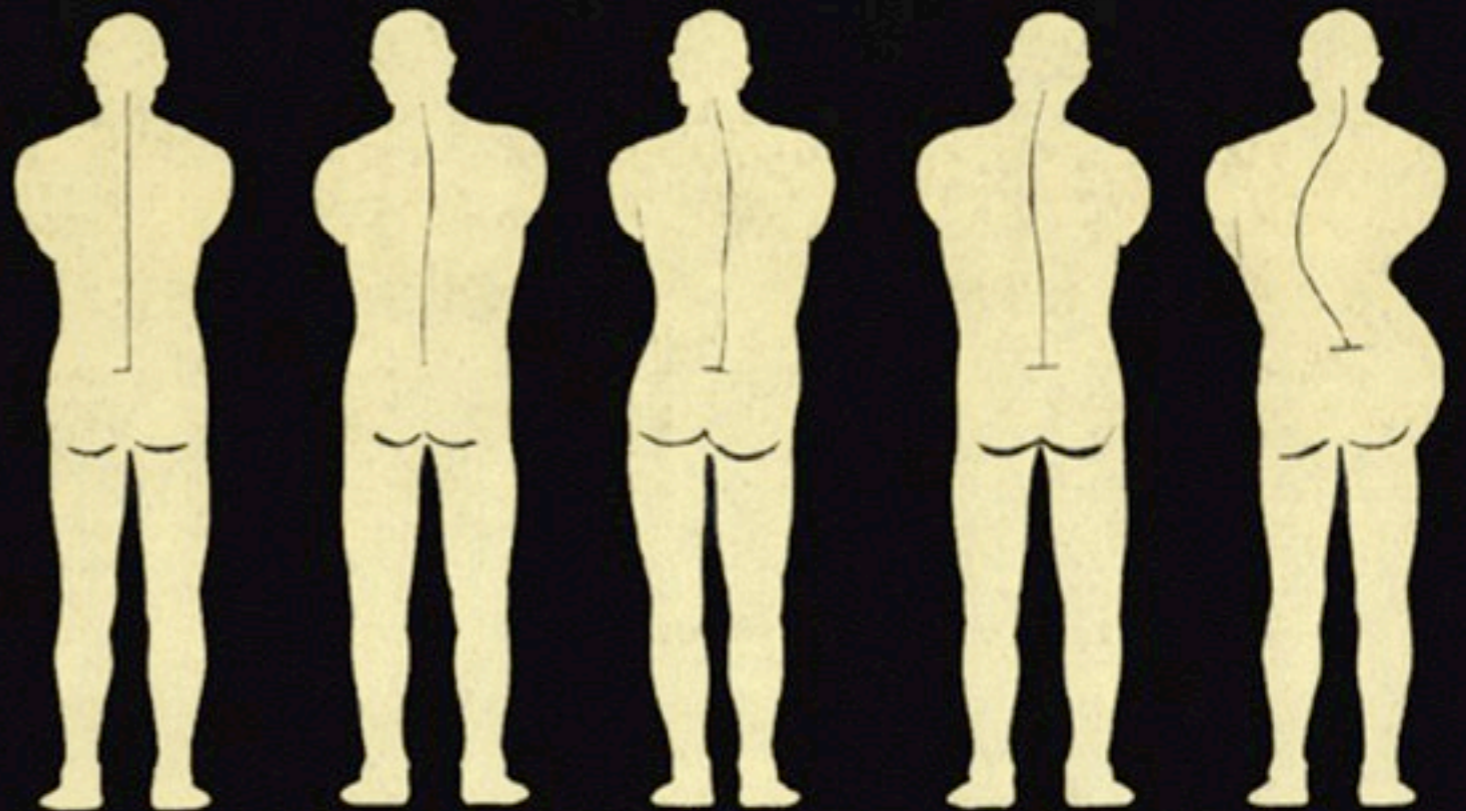
Hollow Back

Flat Pelvis

Slumping Posture

Military Posture

Round Shoulders



Correct

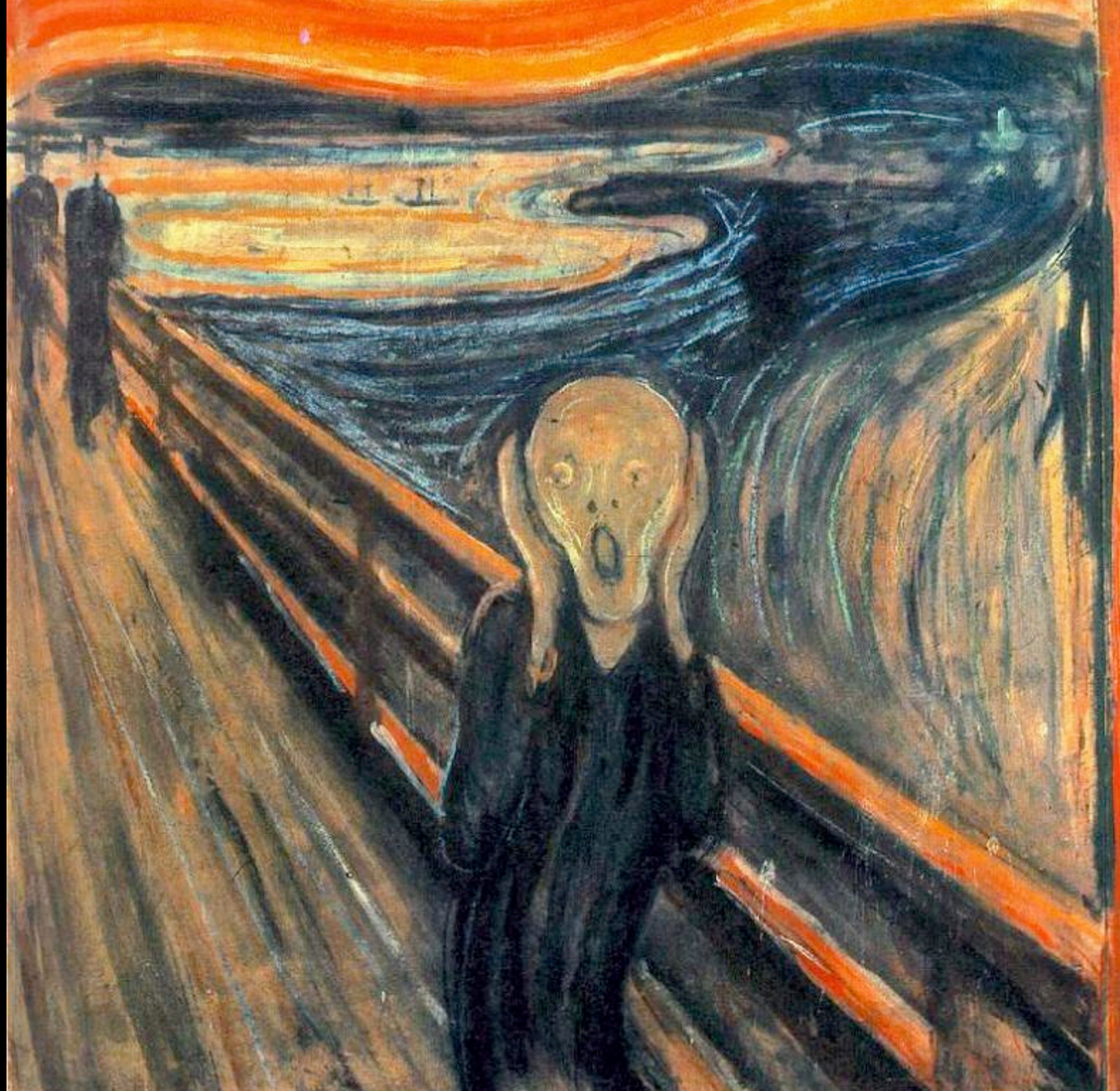
High Shoulder

High Hip

Head Tilt

Severe Scoliosis

Positur





Sceneposisisjon



Grunnposisjon



Startposisjon



Utøvelsesposisjon

Posisjoner

Rom

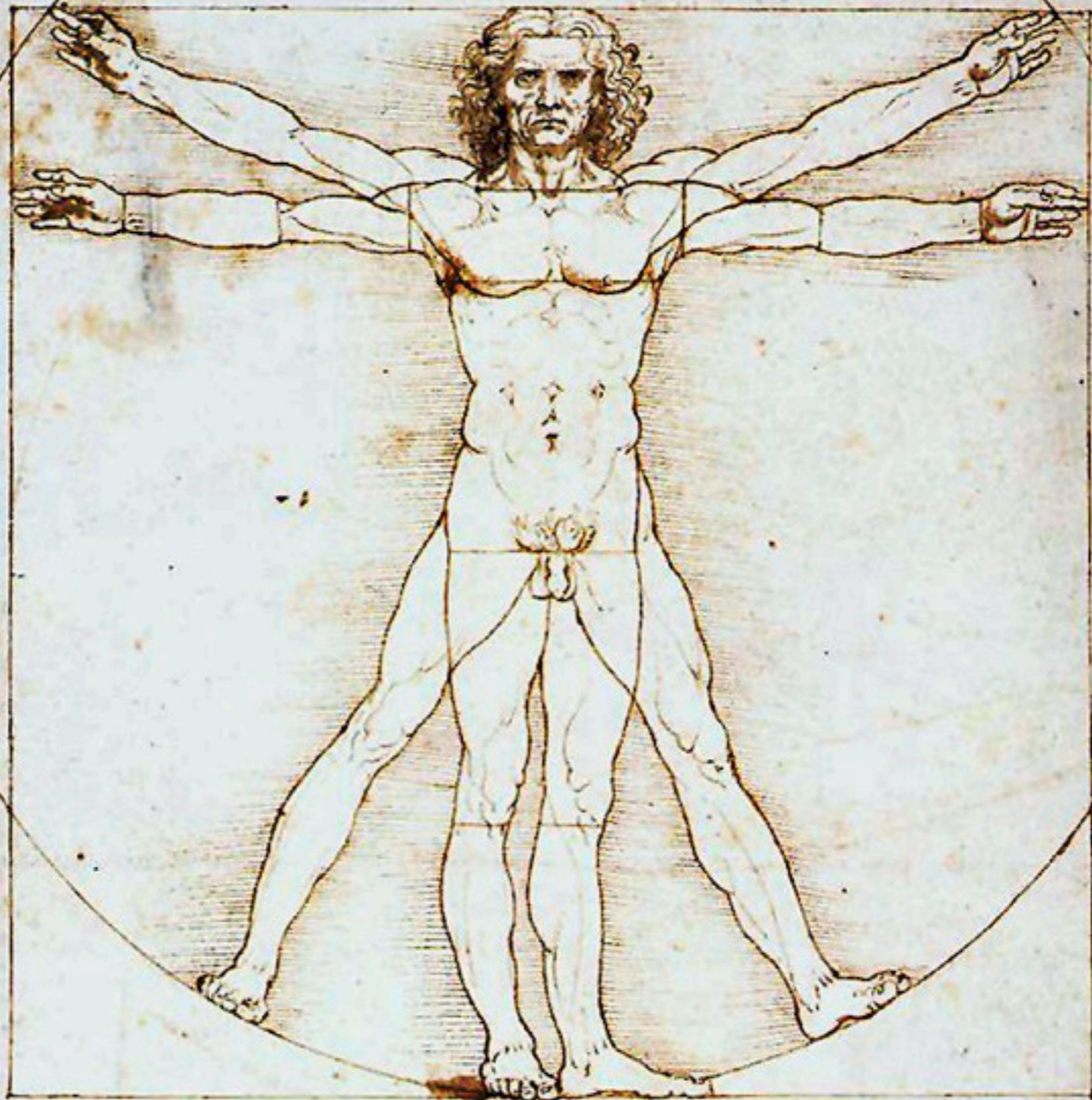
Scenerom
Kroppstrom
Handlingsrom



Scenerom



Kinesfære



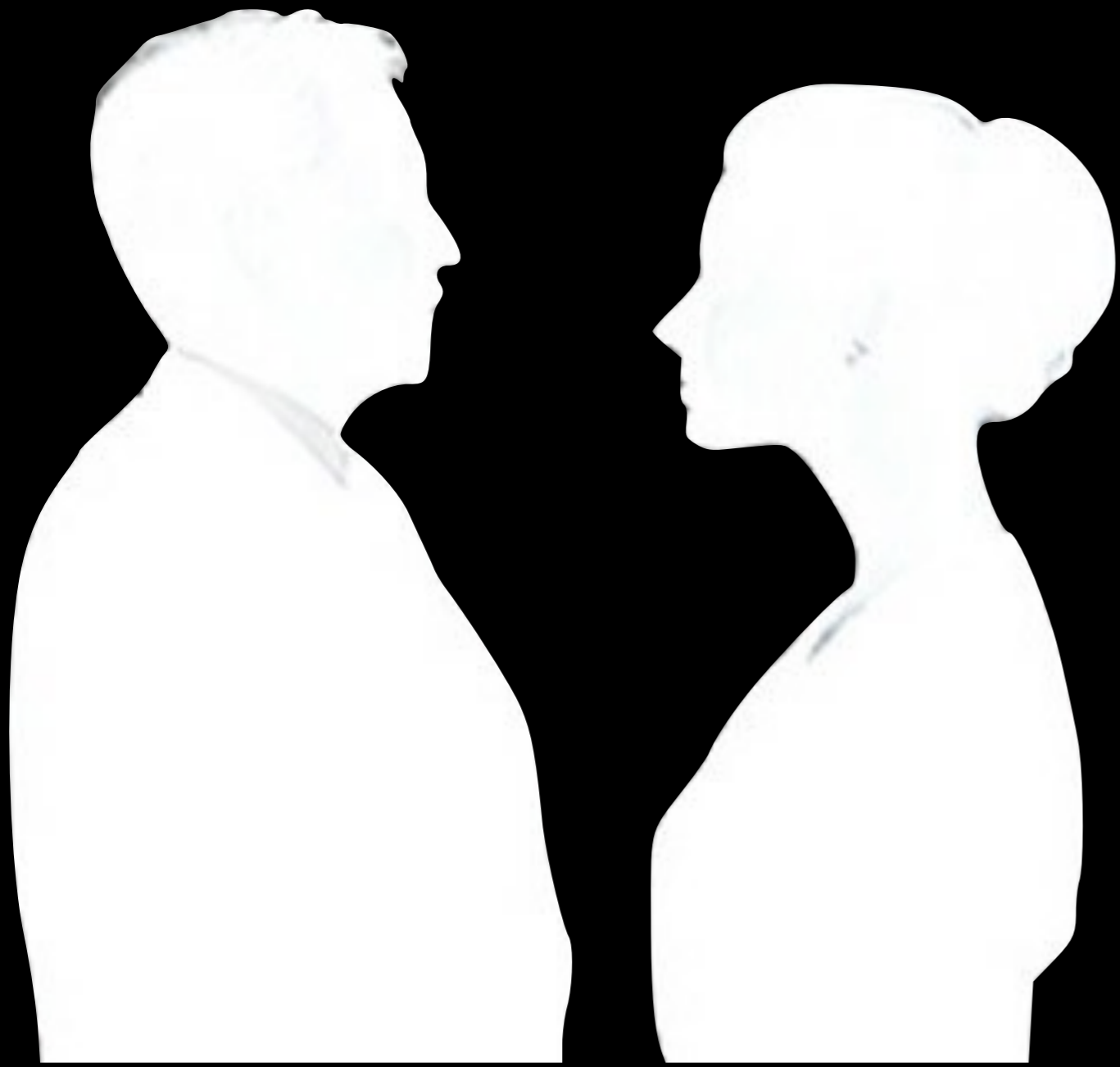
Kroppssrom

Handwritten text in a cursive script, likely Latin or Italian, located at the bottom of the page. The text is arranged in several lines and includes some decorative flourishes.

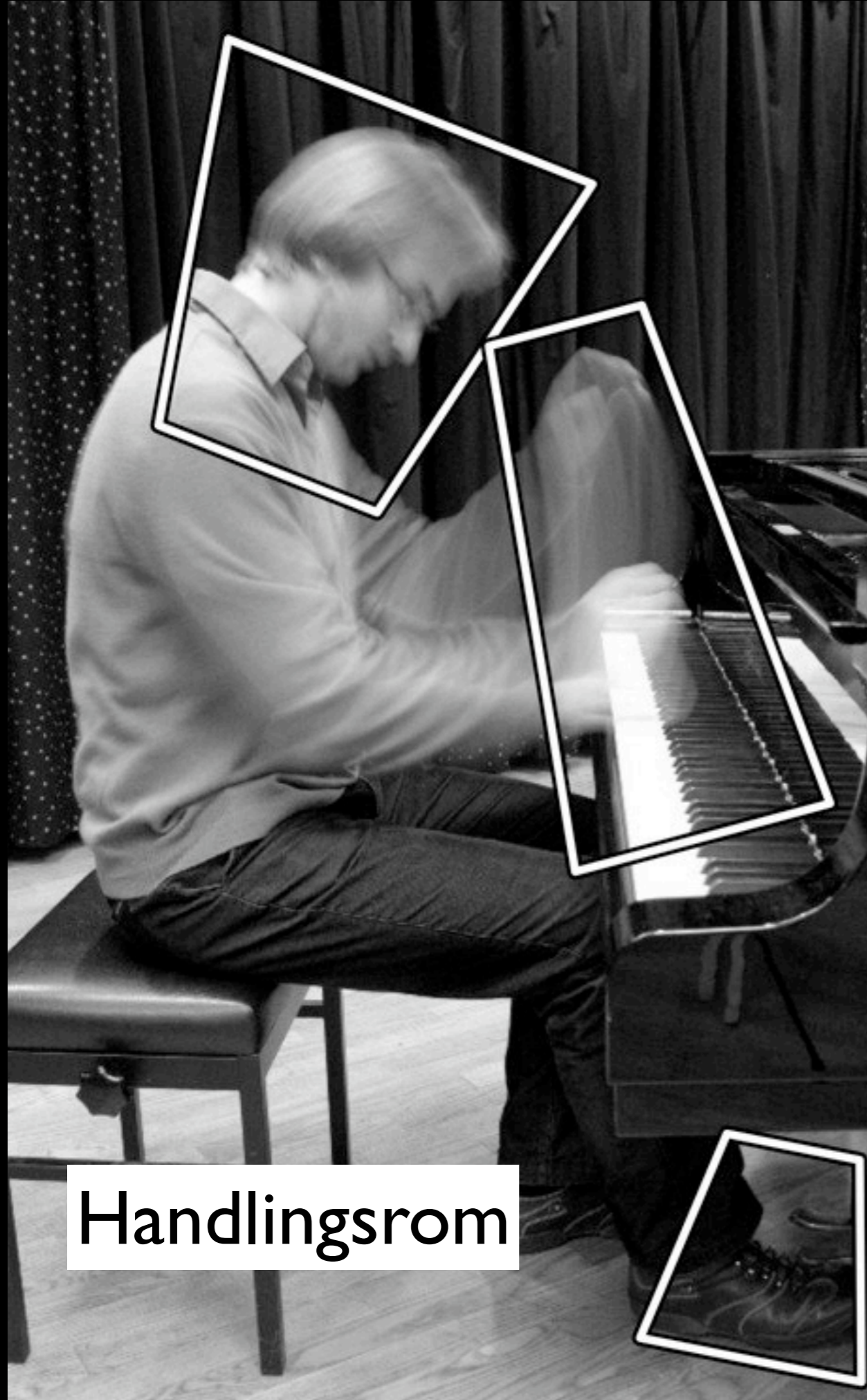


hvor nærme kan du stå?









Fraseringsbevegelser

Lydproduserende
handlinger

Lydmodifiserende
handlinger

Handlingsrom

bevegelse
handling
gest

Bevegelser

Frivillige
Ufrivillige



Impulsiv



Utholdt



Iterativ



Handling



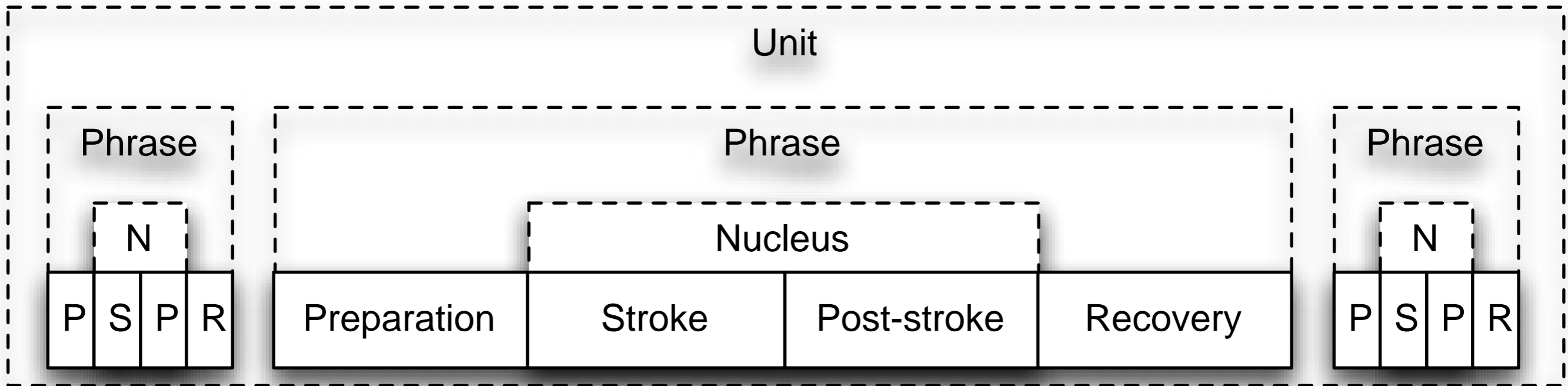


Eksitasjon

Prefiks

Suffiks





Frihetsgrader

Gest



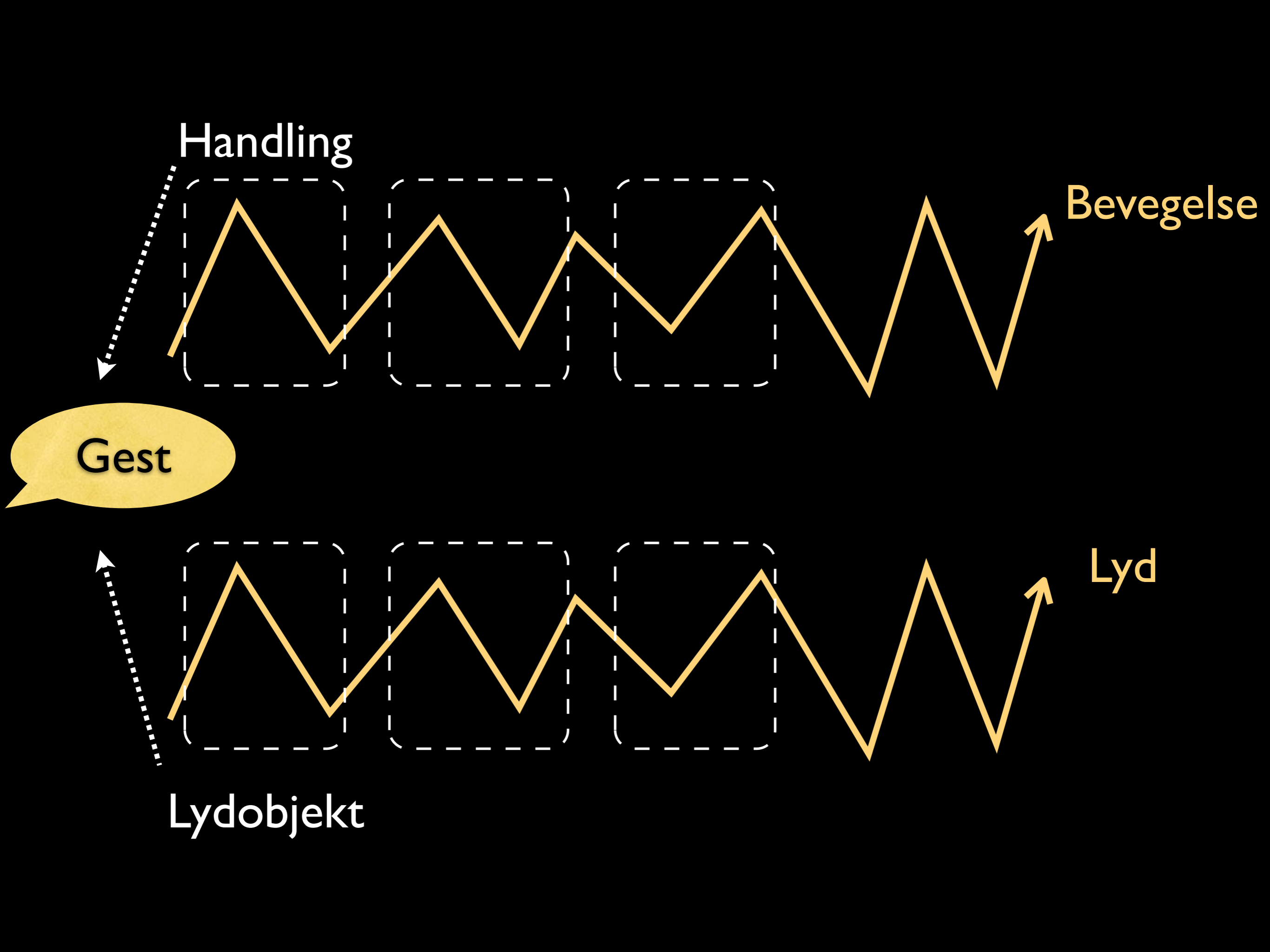
Handling

Bevegelse

Gest

Lyd

Lydobjekt





Bevegelsesanalyse

Deskriptiv:

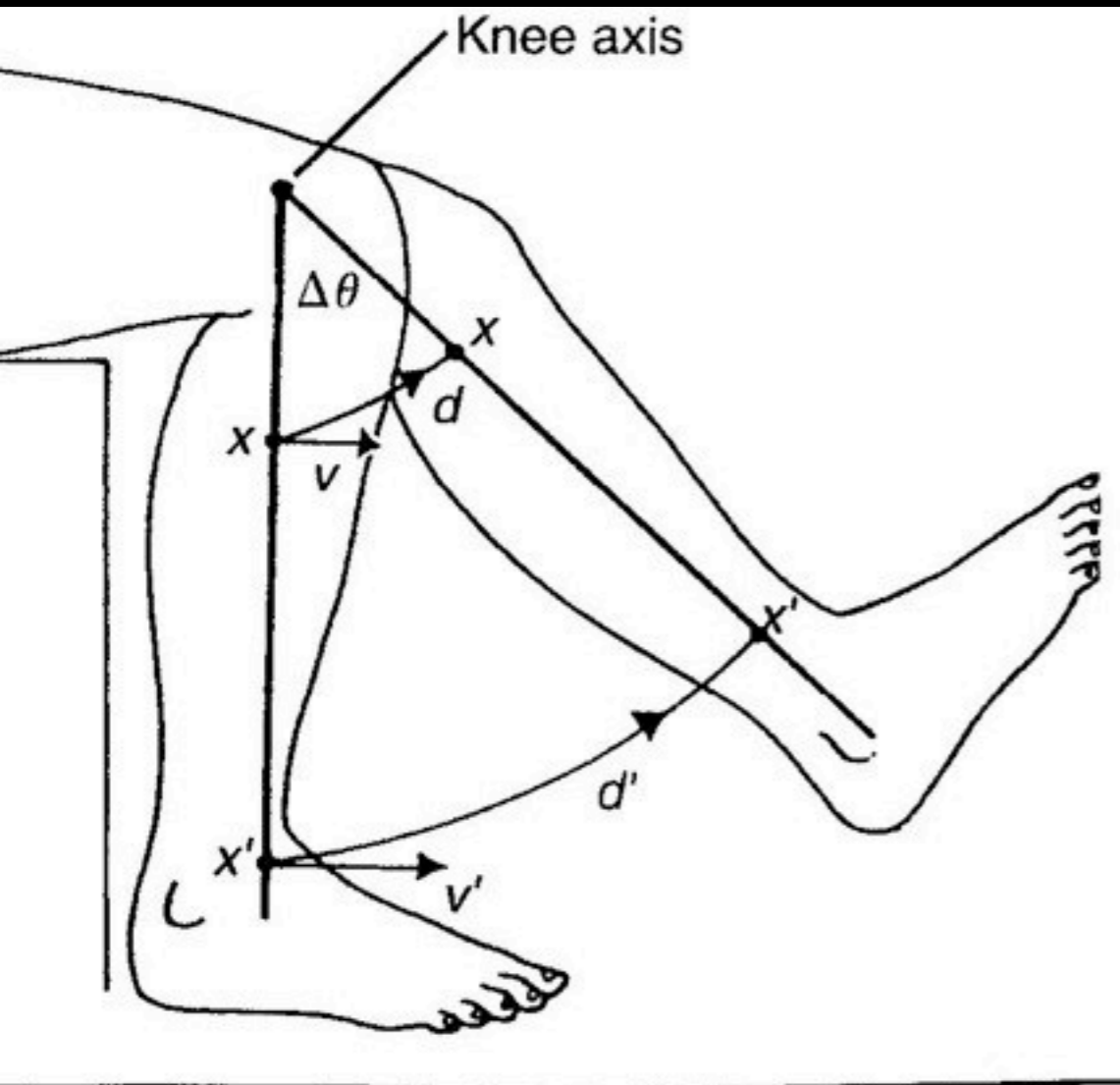
hva skjer fysisk? (hastighet, romlig, tidsmessig, ...)

Funksjonell:

hvilken (semantisk) funksjon har bevegelsen (lydproduserende, modifierende, etc.)

Deskriptiv

Biomekanikk

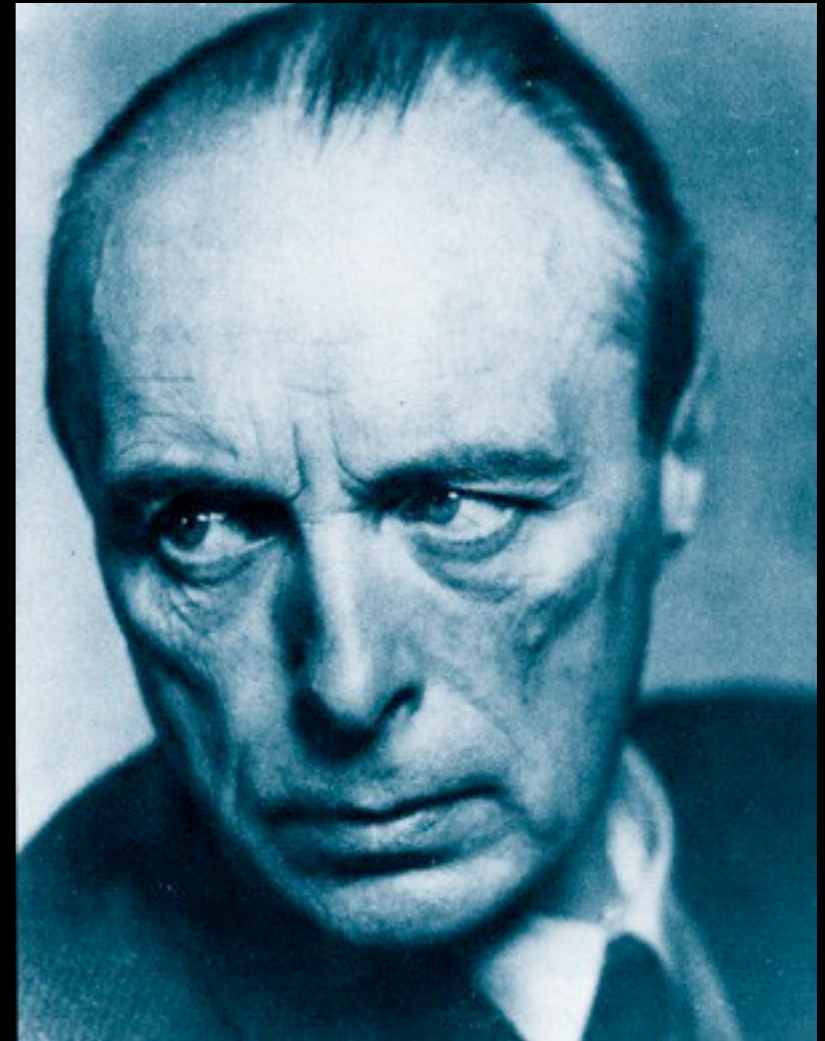


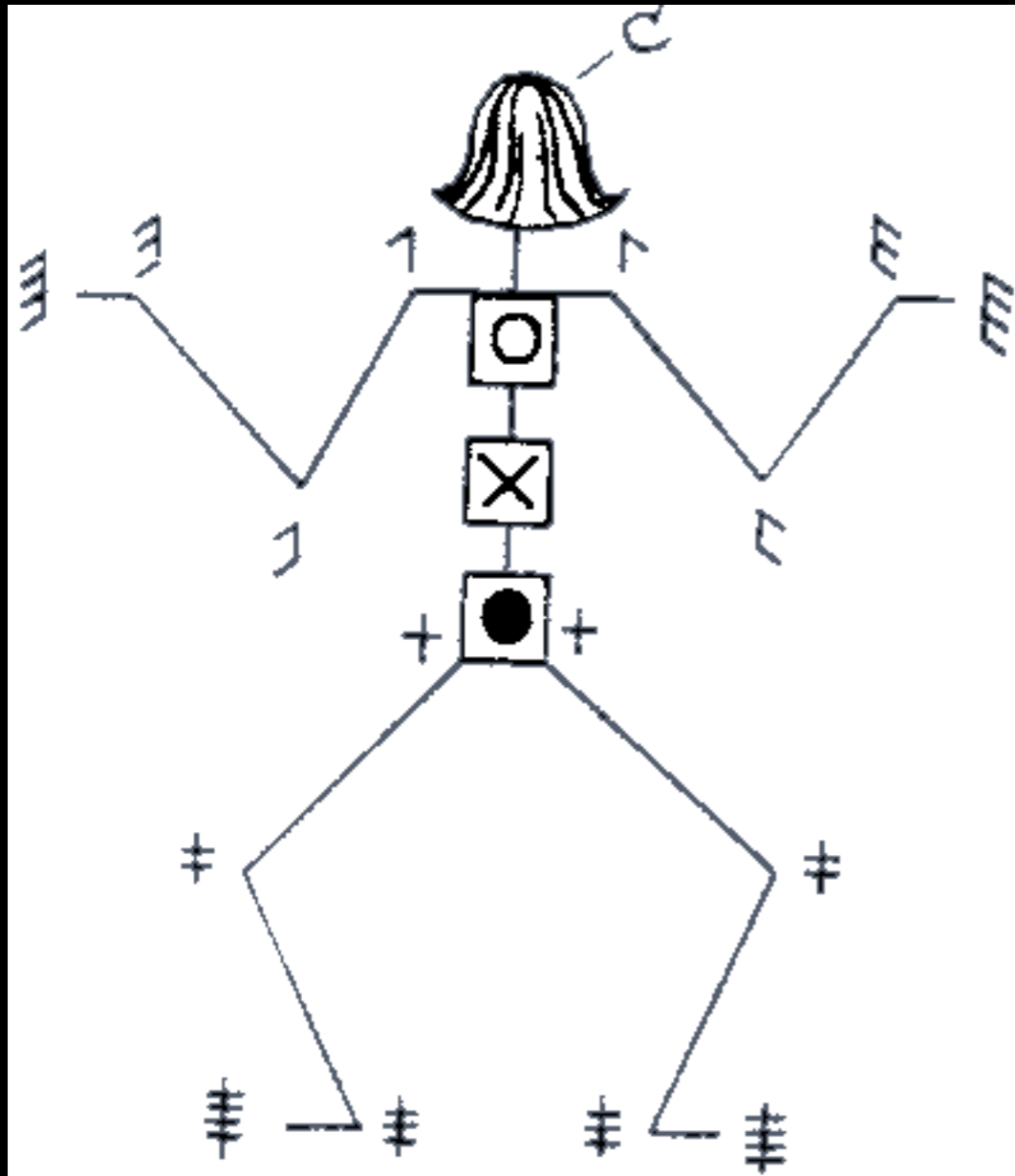
The screenshot shows the VICON iQ software interface. The main window displays a 3D workspace with a human figure model. The figure is composed of several colored segments: a blue torso, red arms, and green legs. The workspace is titled "3D Workspace" and "Ortho Top". The interface includes a menu bar with "Post Processing" and "Modeling" options. A "Pipeline Control" panel on the right lists various processing steps, many of which are checked. A status bar at the bottom indicates "Operation: Delete Unlabeled Trajectories Succeeded." and shows a timeline with markers for "2324", "3050", and "3050".

Session 3\RDML.tvd - Vicon iQ
Workspace Help
Post Processing Modeling
3D Workspace Ortho Top Camera Raw Default
Pipeline Control
GeneralPipelineFULL
 CircleFit, Reconstruct, Trajectory
 Camera Health Check
 Load Subject(s)
 Trajectory Labeller
 Trim Tails
 Filter Using a Butterworth Function
 Filter Using Weighted Point Average
 Fill Gaps using Splines
 Fill Gaps Rigid Body
 Fill Gaps using Splines
 Fill Gaps Rigid Body
 Fill Gaps using Virtual Points
 Fill Gaps using Splines
 Kinematic Fit
 Fill Gaps using Kinematic Model
 Delete Unlabeled Trajectories
 Export data to C3D file
GeneralPipelineFULL : 100%
Operation Control

View
 Markers
 Sticks
 Bounding Boxes
 Parameter Links
 Timebar
Displayed Subjects
 Gnome
Camera Options
Frame Selected Frame All
Focus on Selection
Follow Selection
Set Camera Lock Markers
Lock Camera
2324 3050
00:00:19:043 Options
1 1000 2000 3050
Left
Right
General

Rudolf Laban (1879-1958)





148

147

146

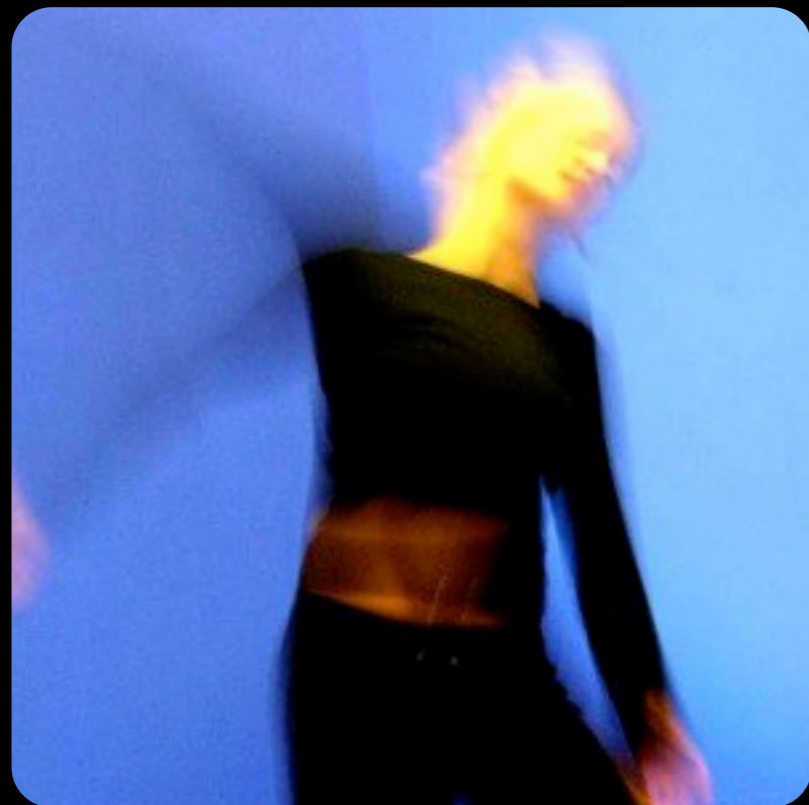
145

ONQJD BMIPK HEGC F

145-6 X = moment of jell

147-150

Labanotasjon



Laban Movement Analysis (Effort)

Space

Direct Indirect

Weight

Light Strong

Time

Sustained Sudden

Flow

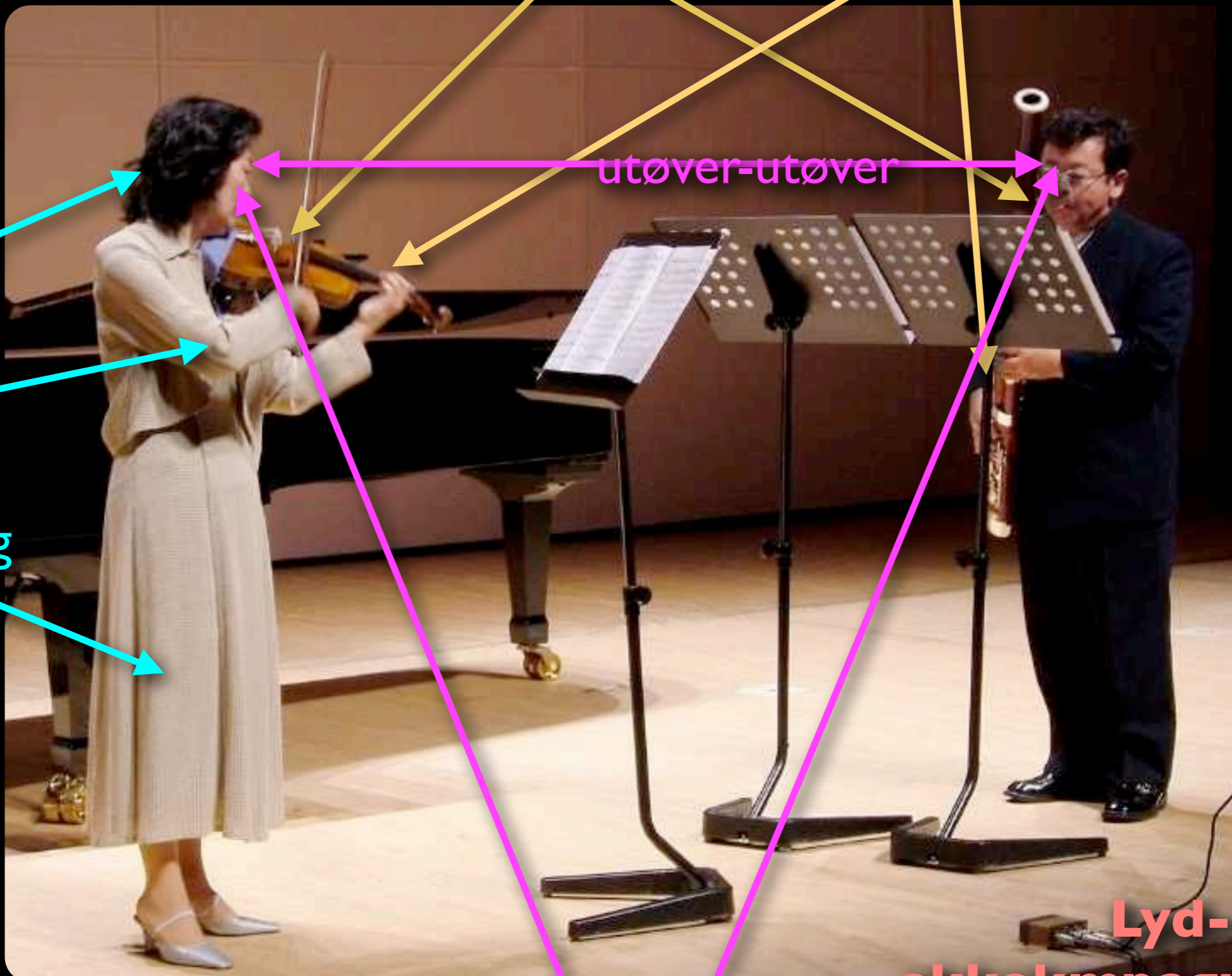
Free Bound

funksjonell

lydproduserende:

eksitasjon

modifikasjon



støtte:

frasering

hjelp

Tiltrekning

utøver-utøver

kommunikativ:

utøver-sanser

Lyd-
akkompagnerende
rytmisk, miming, skissering, , ...

Lydproduserende



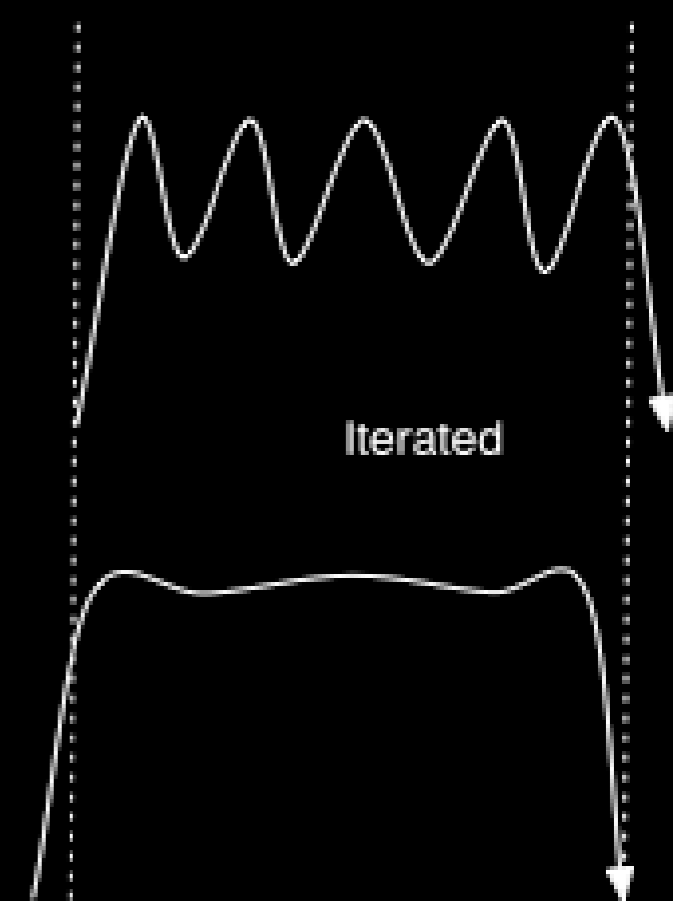
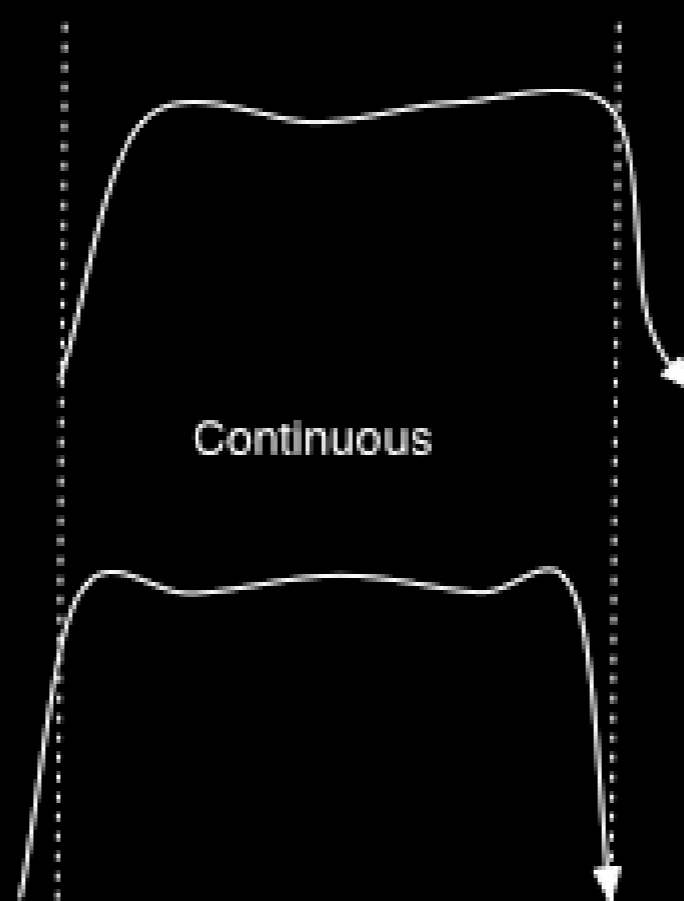
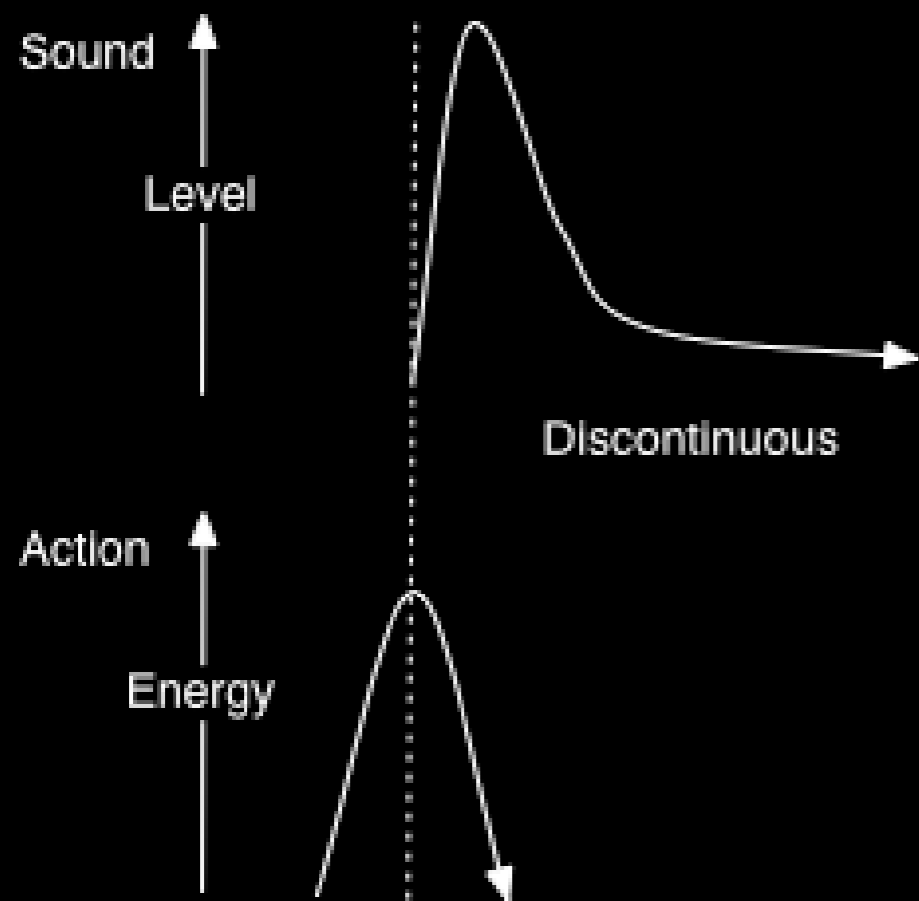
Impulsiv



Utholdt



Iterativ



time

Støttebevegelser

hjelp
frasering
tiltrekning

Kommunikative bevegelser (gester)

Ikoner
Metaforer
Slag
Peking
Emblemer

