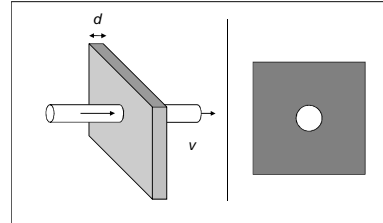


FYS-KJM 4740

MR-teori og medisinsk diagnostikk

Kap. 11  
MR Angiografi

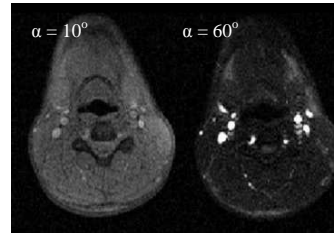
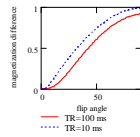
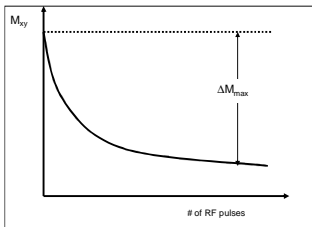
Signalforskjell mellom in-flow spinn og stasjonære spinn:



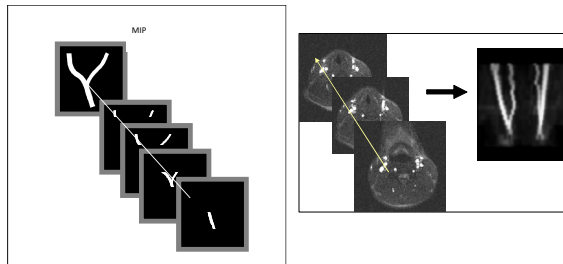
Maksimum in-flow effekt:  $v \geq d/TR$

For spoiled GRE (T1-GRE):

$$\Delta M_{\max} = M_0(\sin(\alpha) - M_{xy}^{\text{GRE}}) = \frac{E_1 \sin(\alpha)(1 - \cos(\alpha))}{1 - \cos(\alpha)E_1}$$



Maximum intensity projection (MIP)



TOF: signalmetning (utfall) pga in-plane flow



