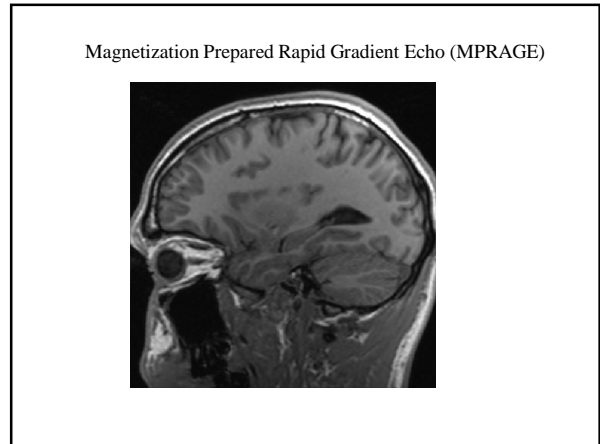
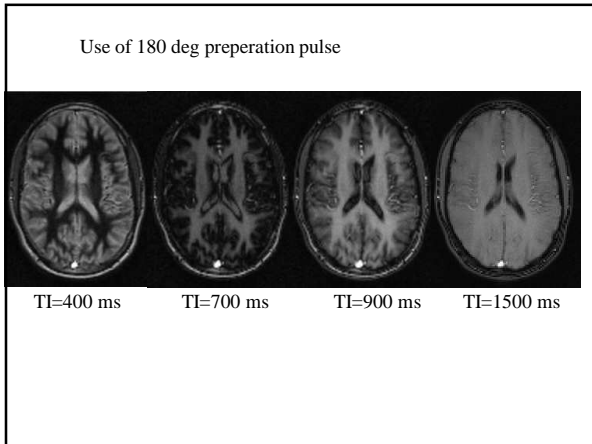
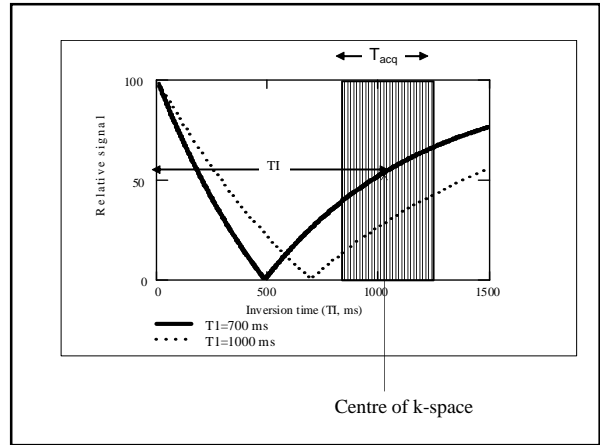
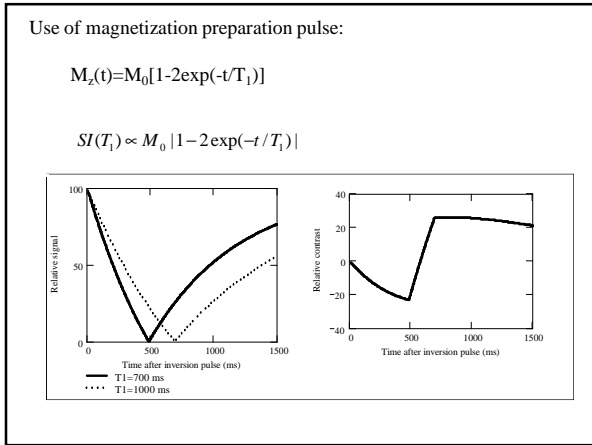
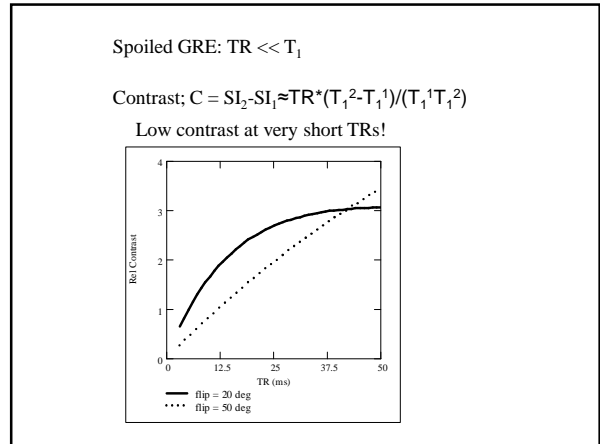


FYS-KJM 4740

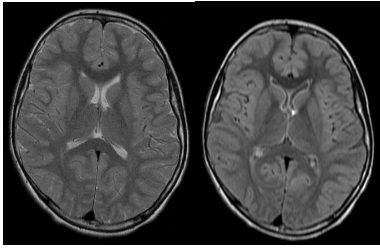
MR-teori og medisinsk diagnostikk

Kap 7

Magnetisation preparation



Selective tissue suppression

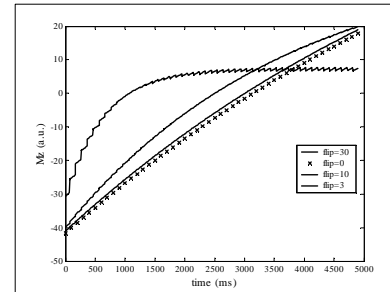


Inversion time (TI) to suppress tissue with relaxation time T_1 :

$$1 - 2\exp(-TI/T_1) = 0 \quad TI = T_1 \ln(2) = 0.69T_1$$

Influence of excitation pulses on the magnetization curve

$$\frac{TR}{T_{app}} = \frac{TR}{T_1} - \ln[\cos(\alpha)]$$



The 'Look-Locker' sequence

