



Glacial depositional features

Glacial depositional features

1: Ice marginal landforms

2: Subglacial landforms







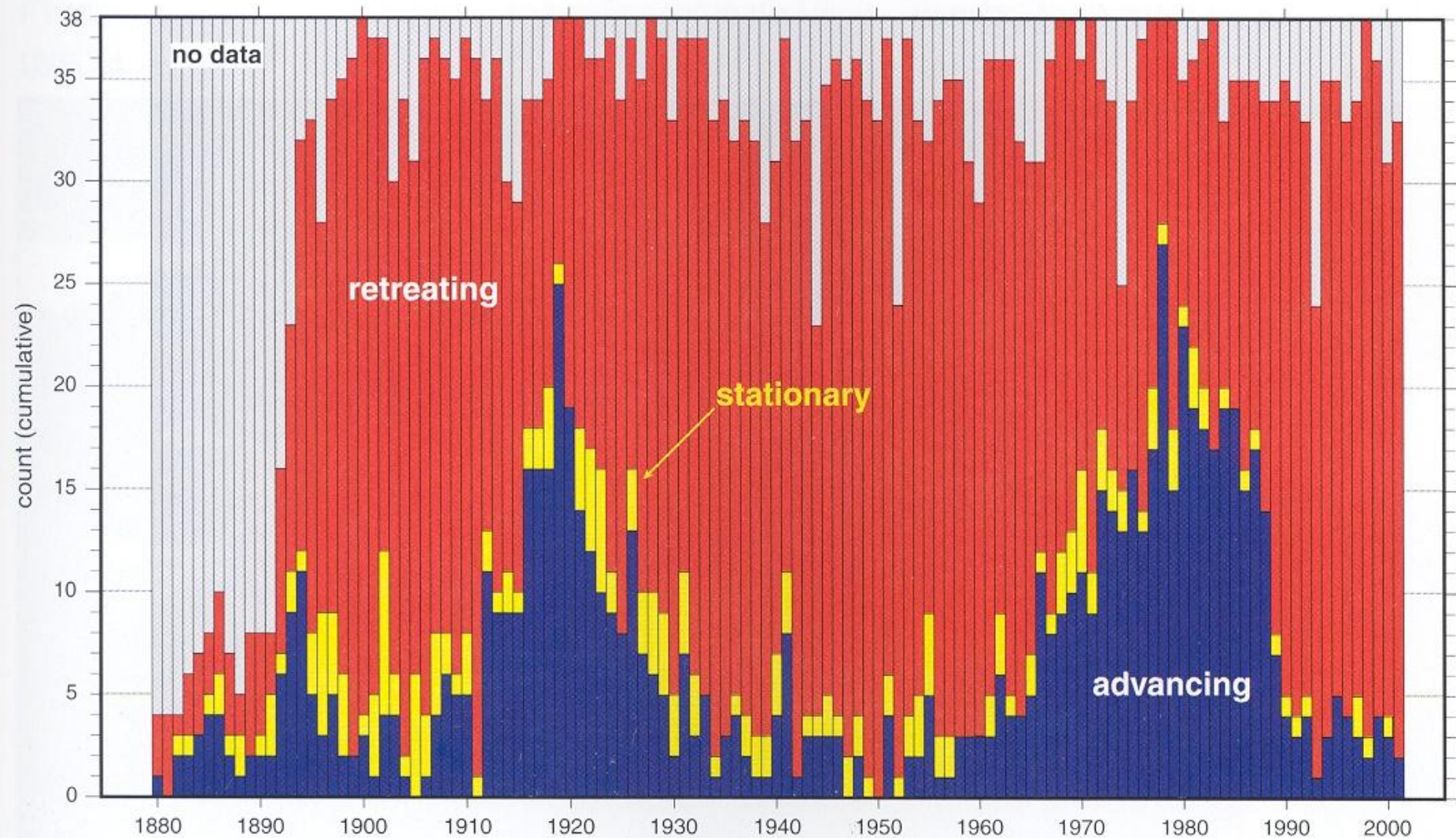
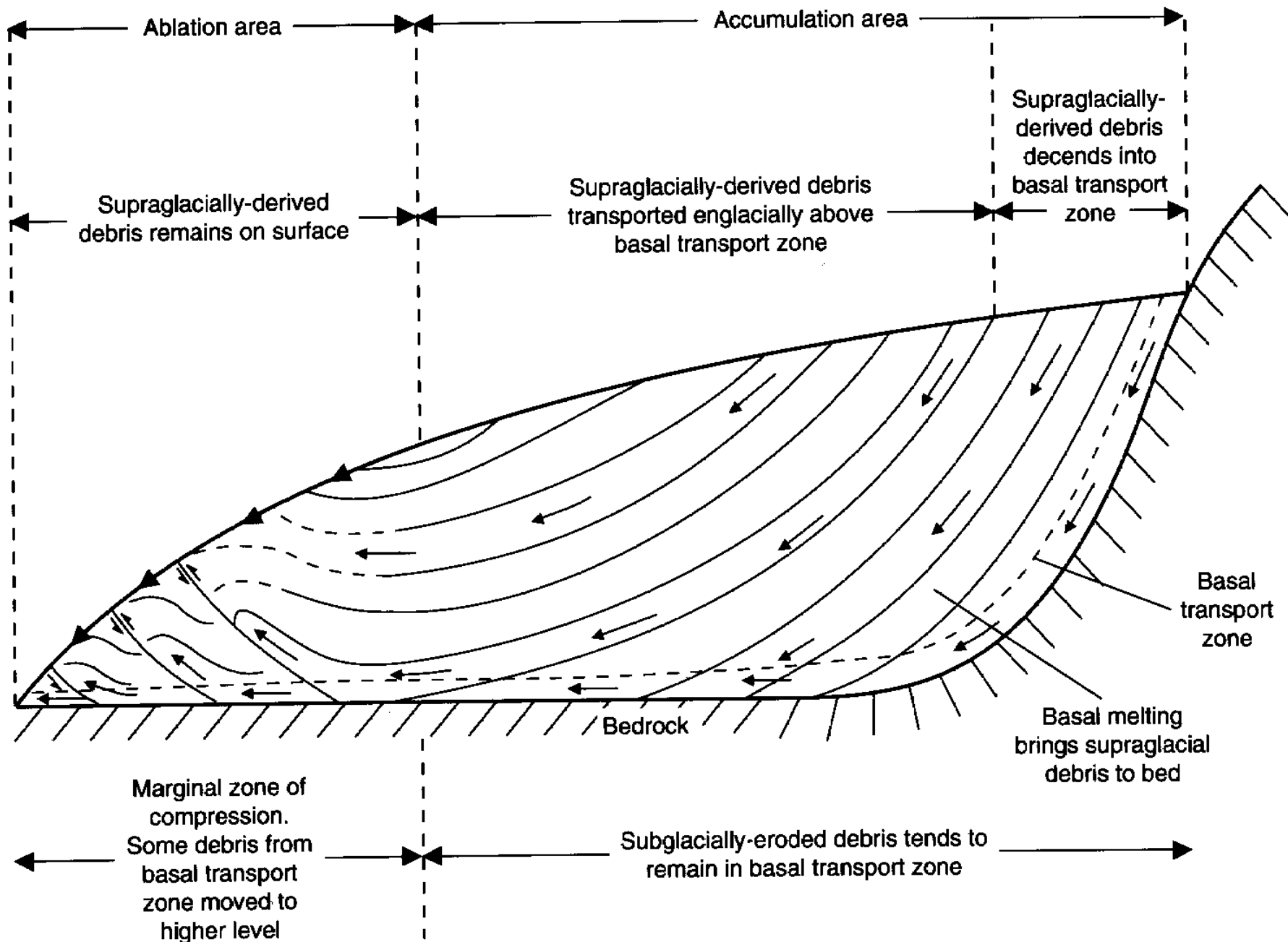


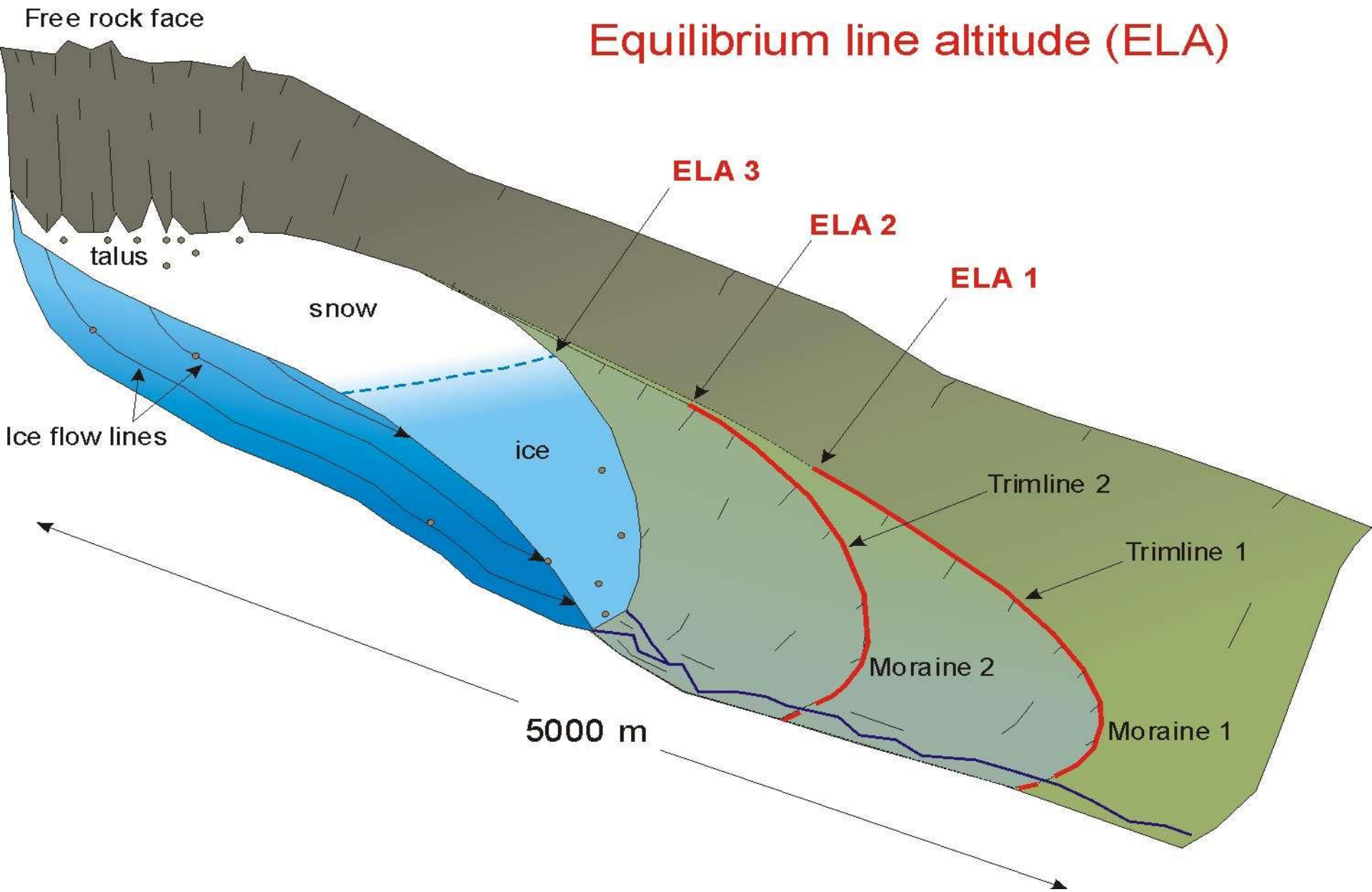
Figure 2.1a: Yearly classification of glacier length behaviour (advancing, stationary and retreating) of 38 selected glaciers (cf. Table 2.1).







Equilibrium line altitude (ELA)







Non-surgingly glaciers







Surging glaciers







At the terminus









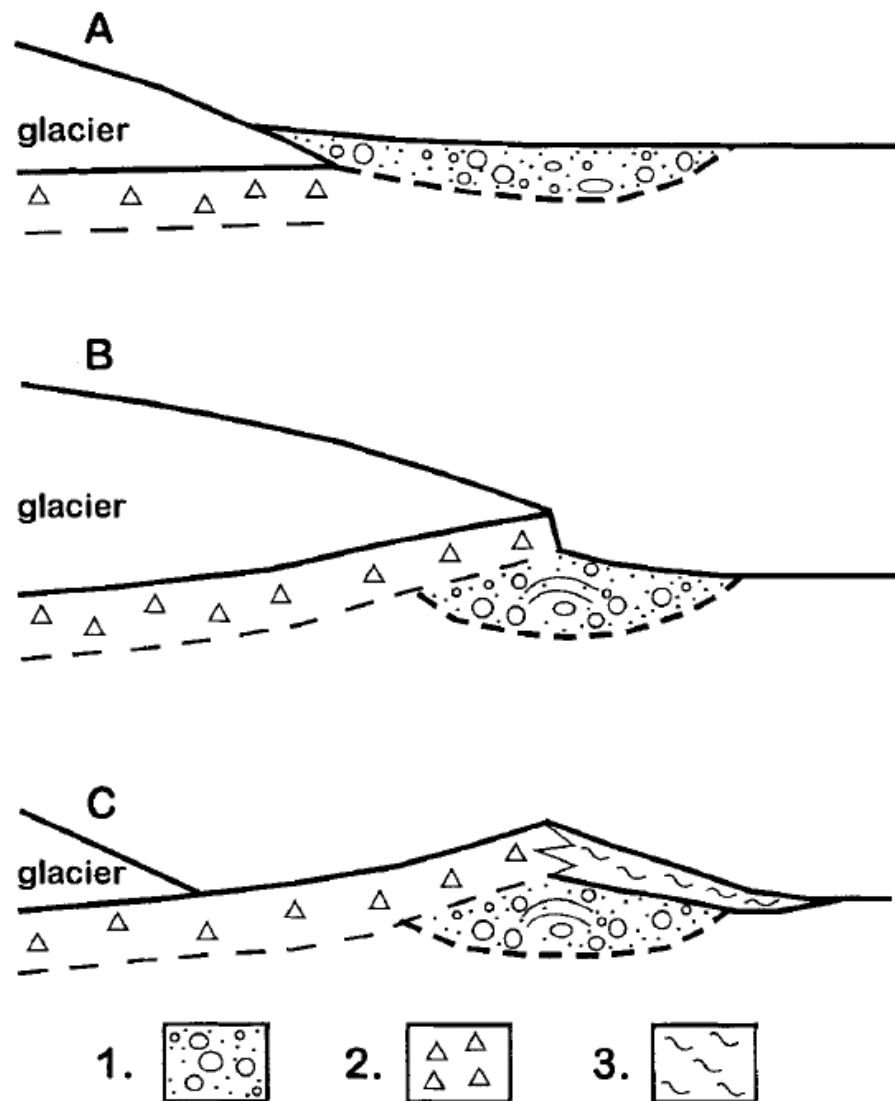
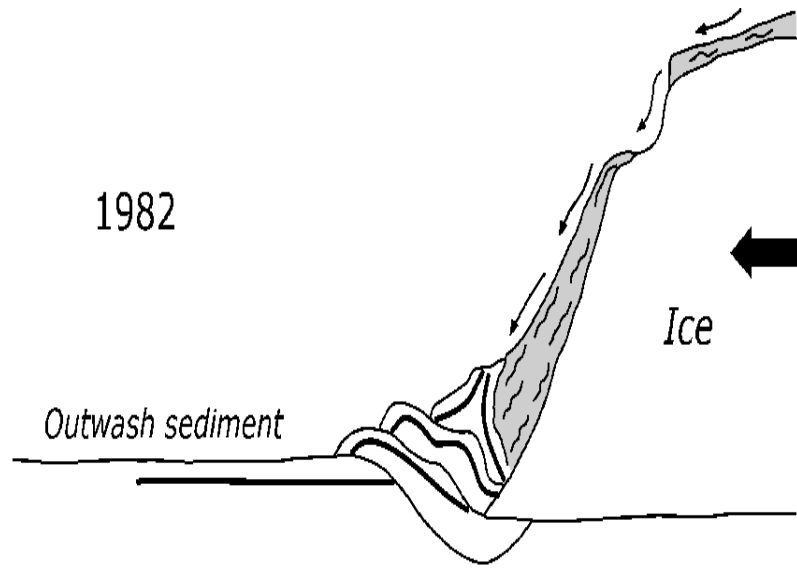


Fig. 5. Schematic diagram illustrating a conceptual sedimentologic model for the formation of the moraines observed on Irma Hill, north-central Wisconsin. The sequence of formation is discussed in the text; Unit 1 is sorted ice-marginal sediment; Unit 2 is basal debris-rich ice or frozen subglacial till; Unit 3 is debris-flow sediment. Figure adapted from Ham (1994).

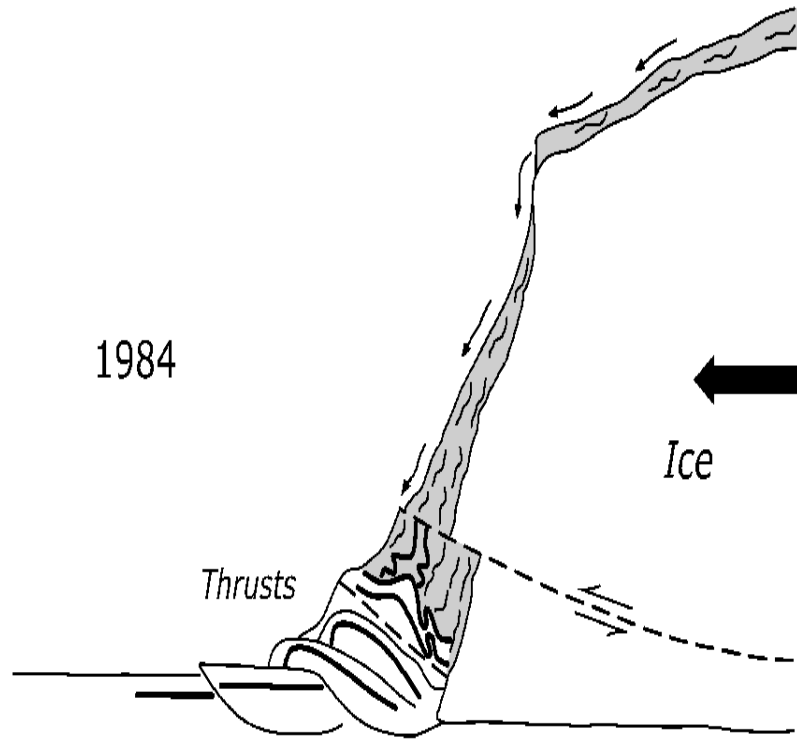




A



B



Push moraines









Ice-cored moraines



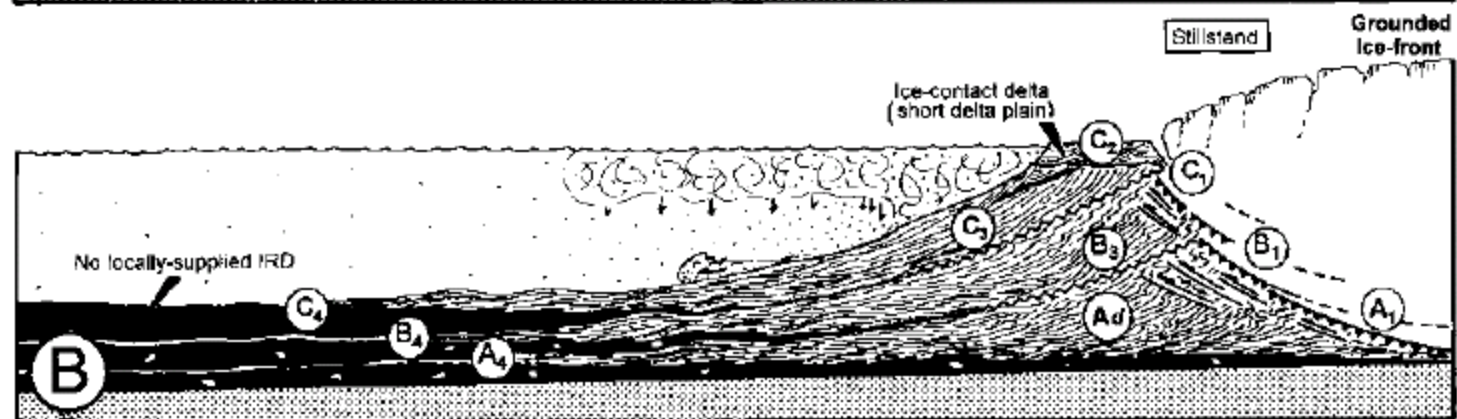
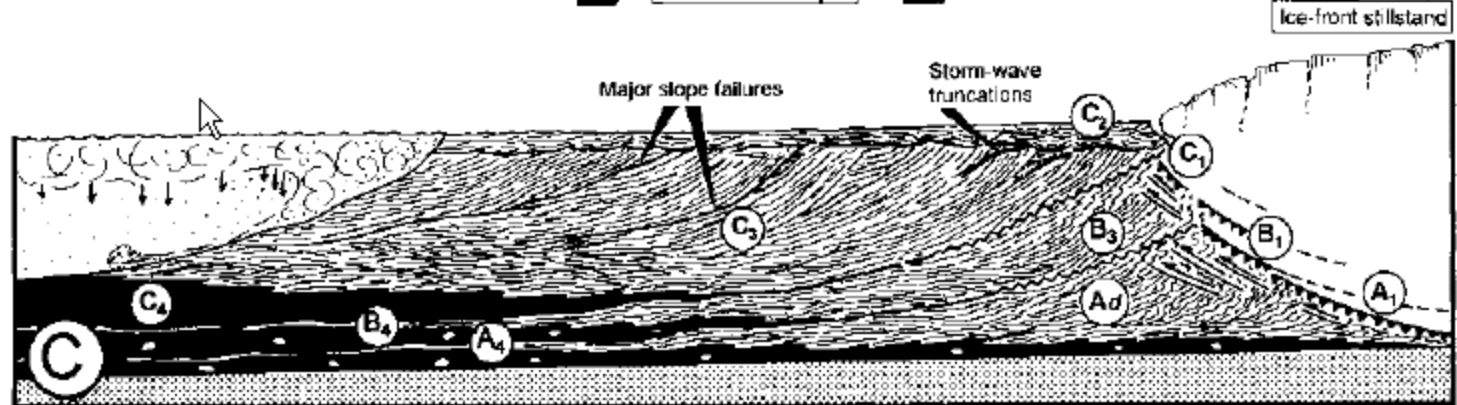
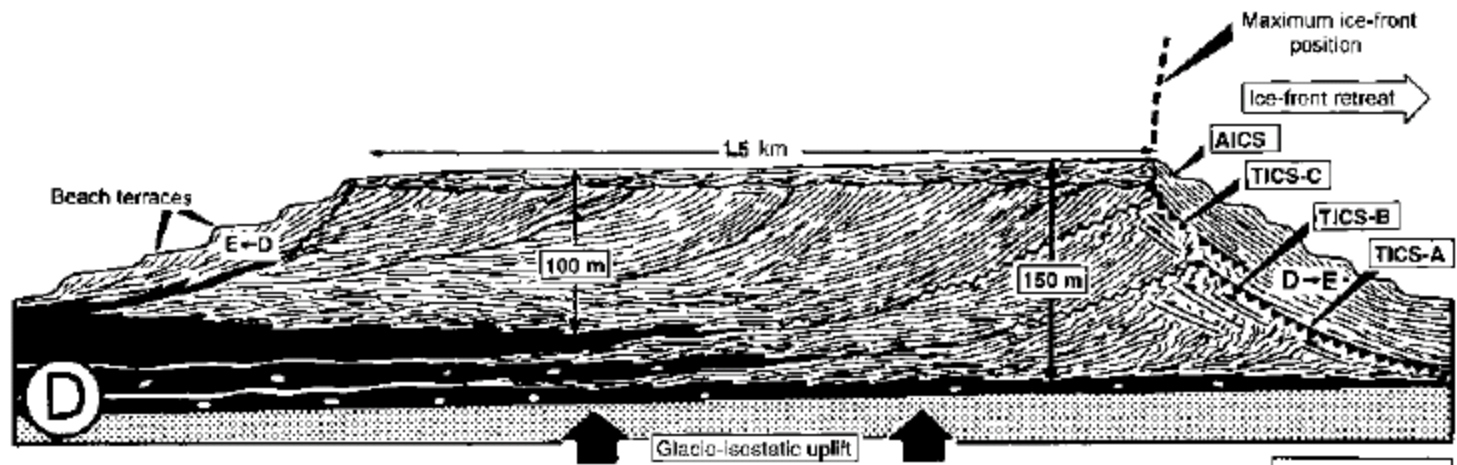




24 3'99

Marine moraines











Medial moraines





Lateral drainage channels





Ice-dammed lakes

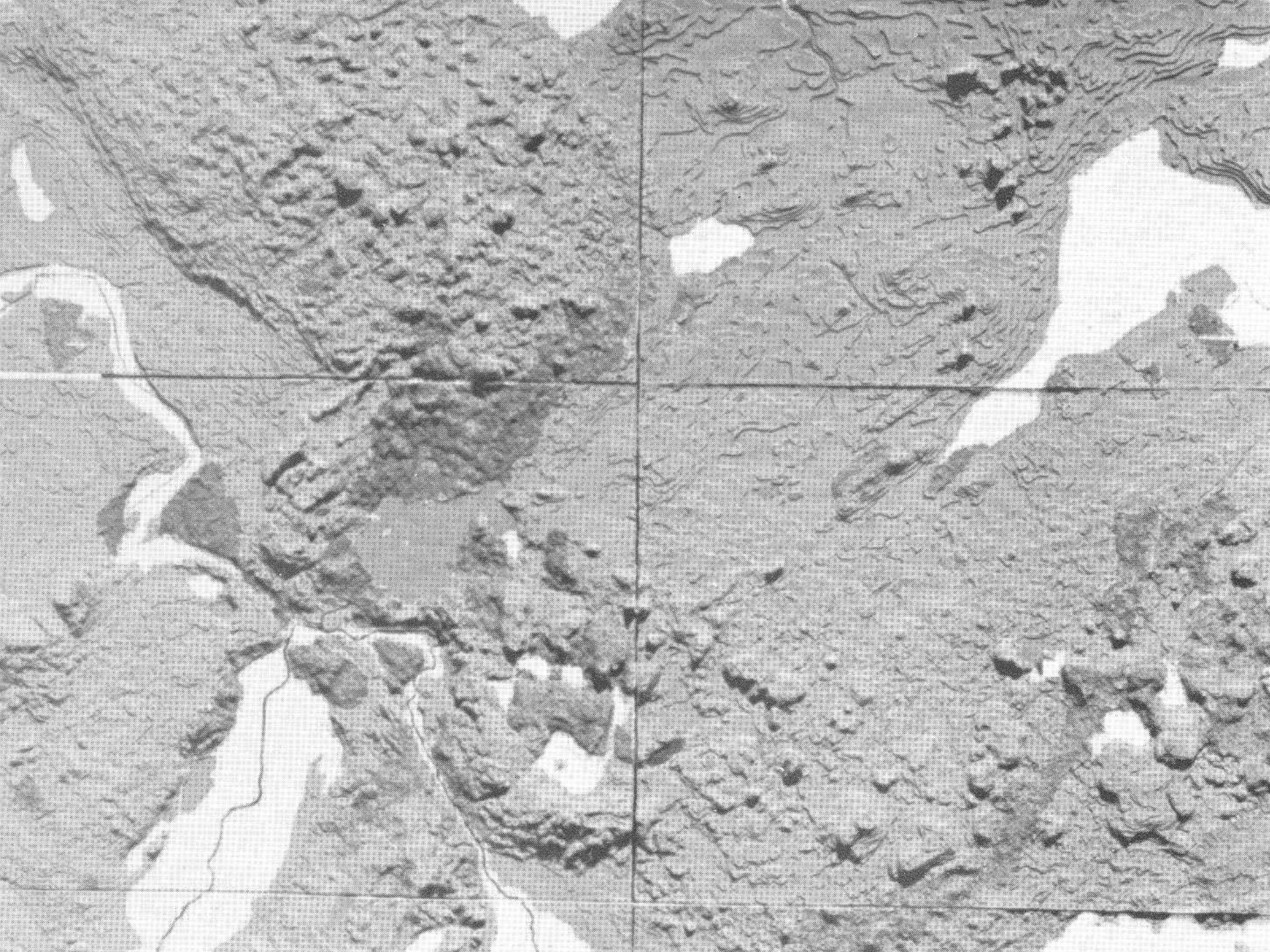




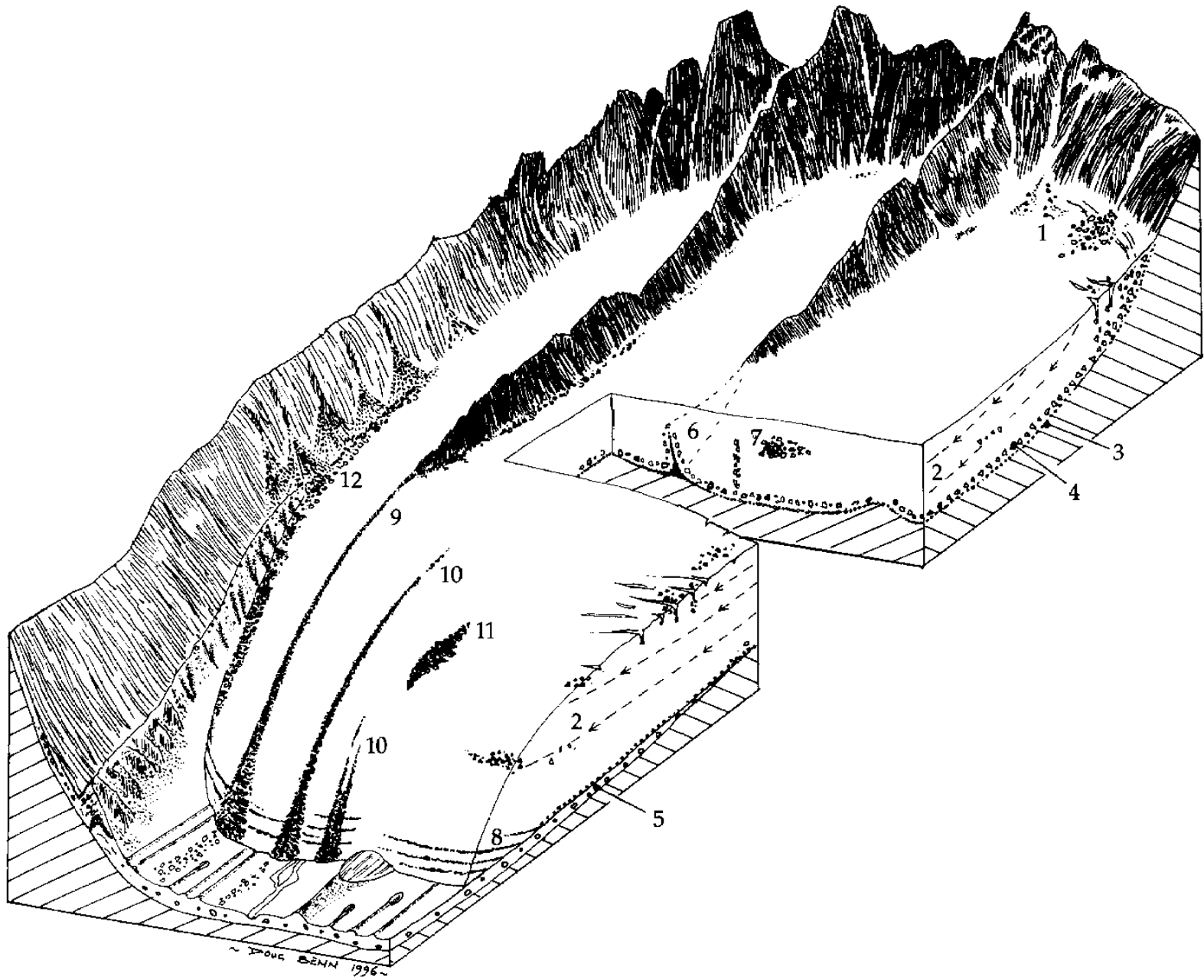
Extramarginal meltwater plains







Subglacial landforms



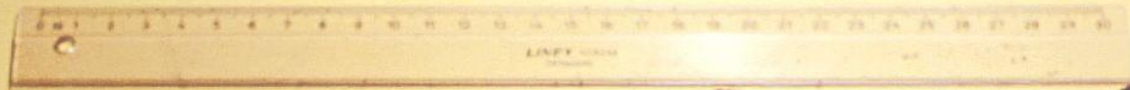
















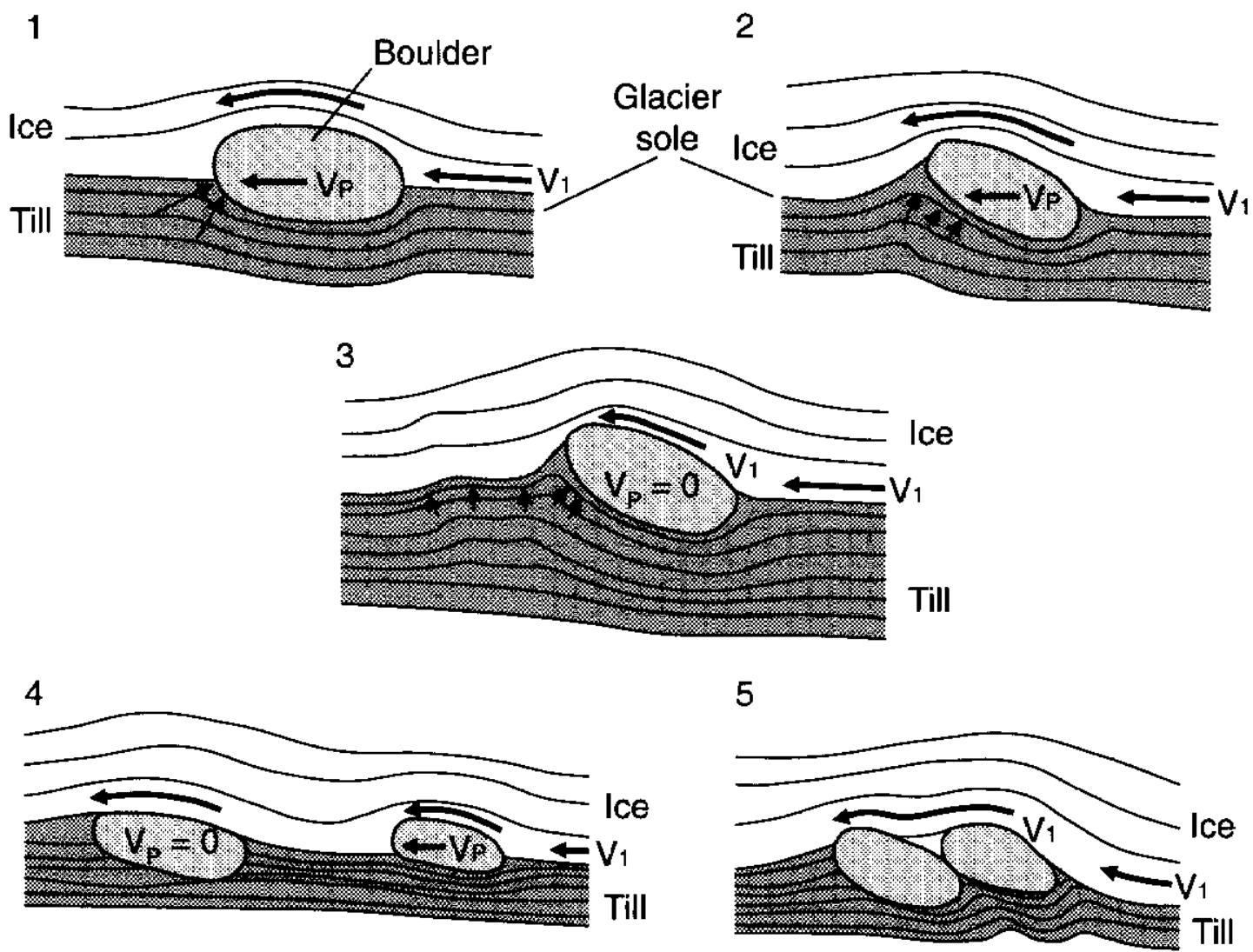








B

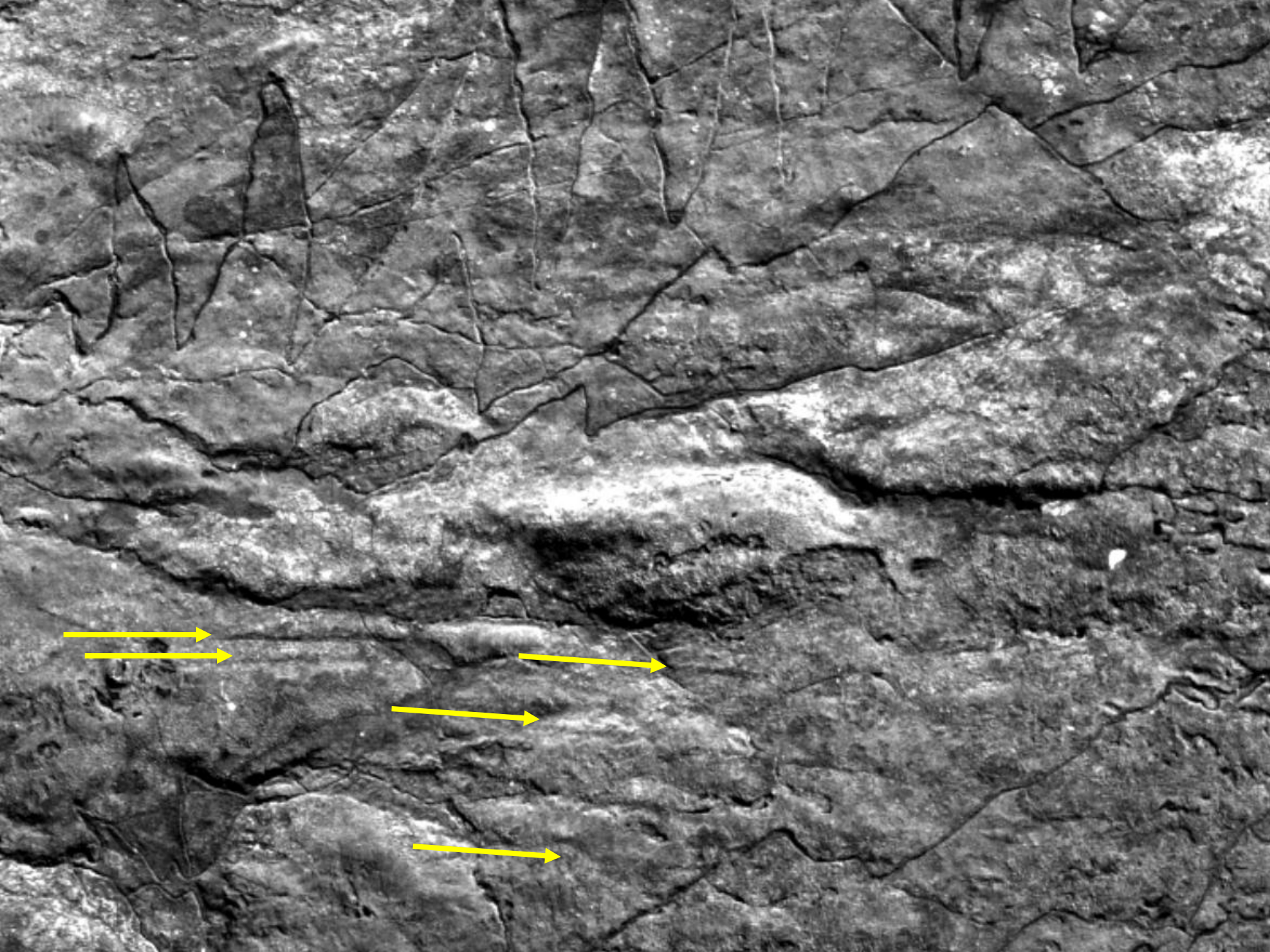


Fluted moraine

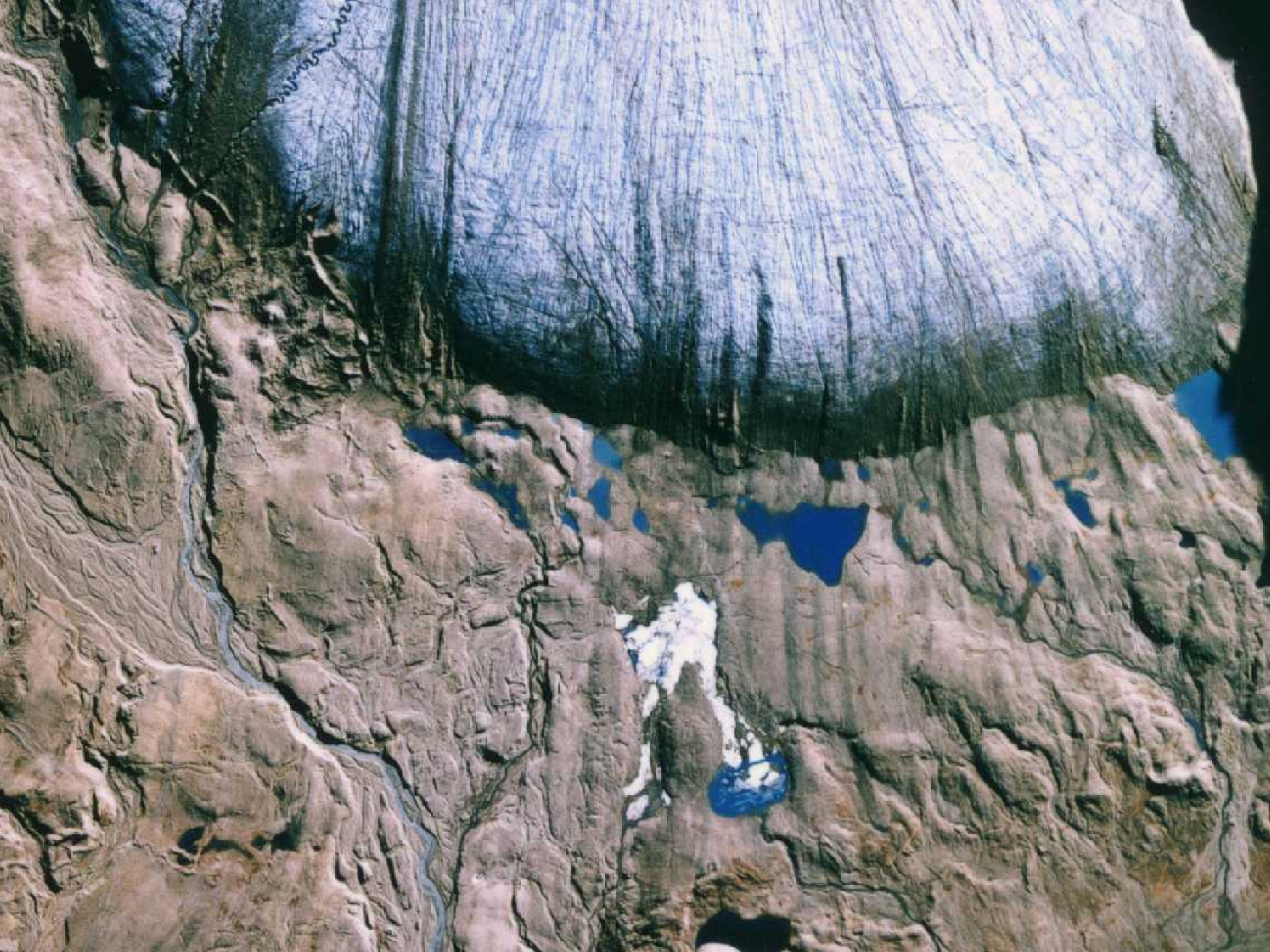




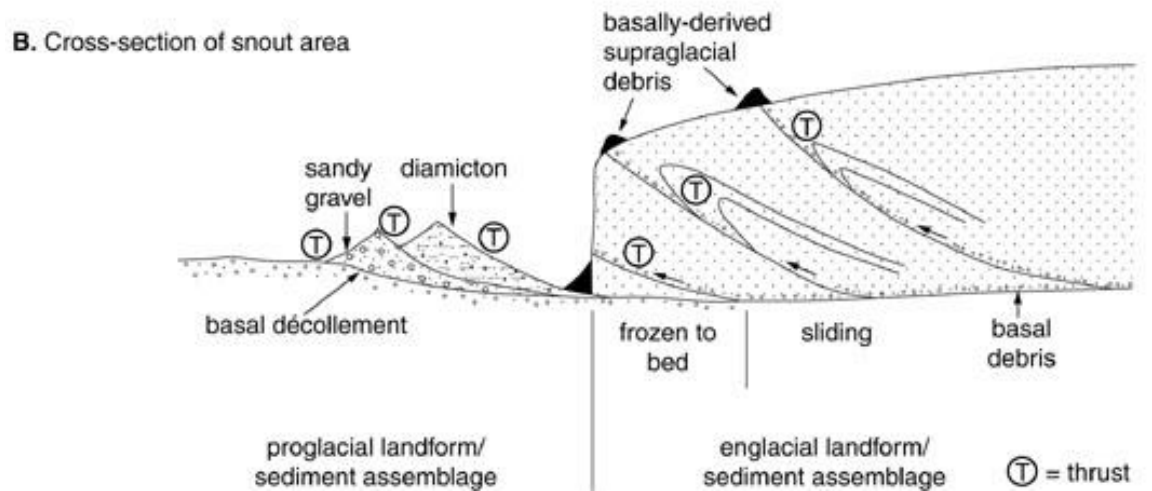
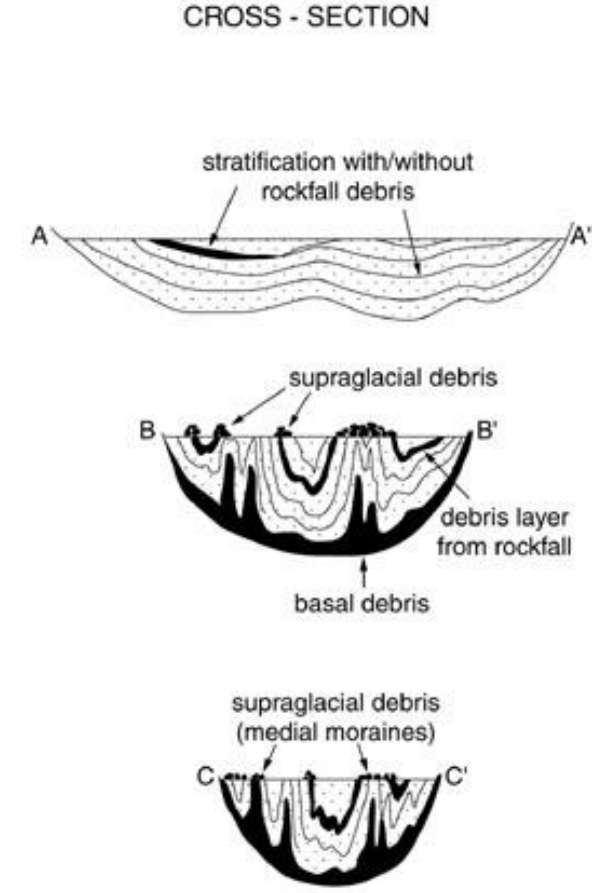
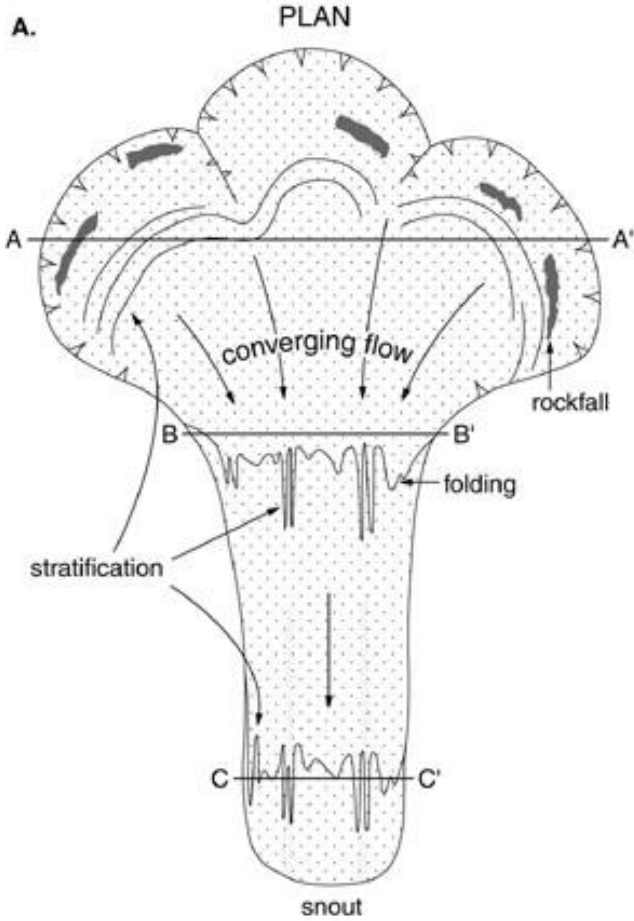




False fluted moraine







Drumlins









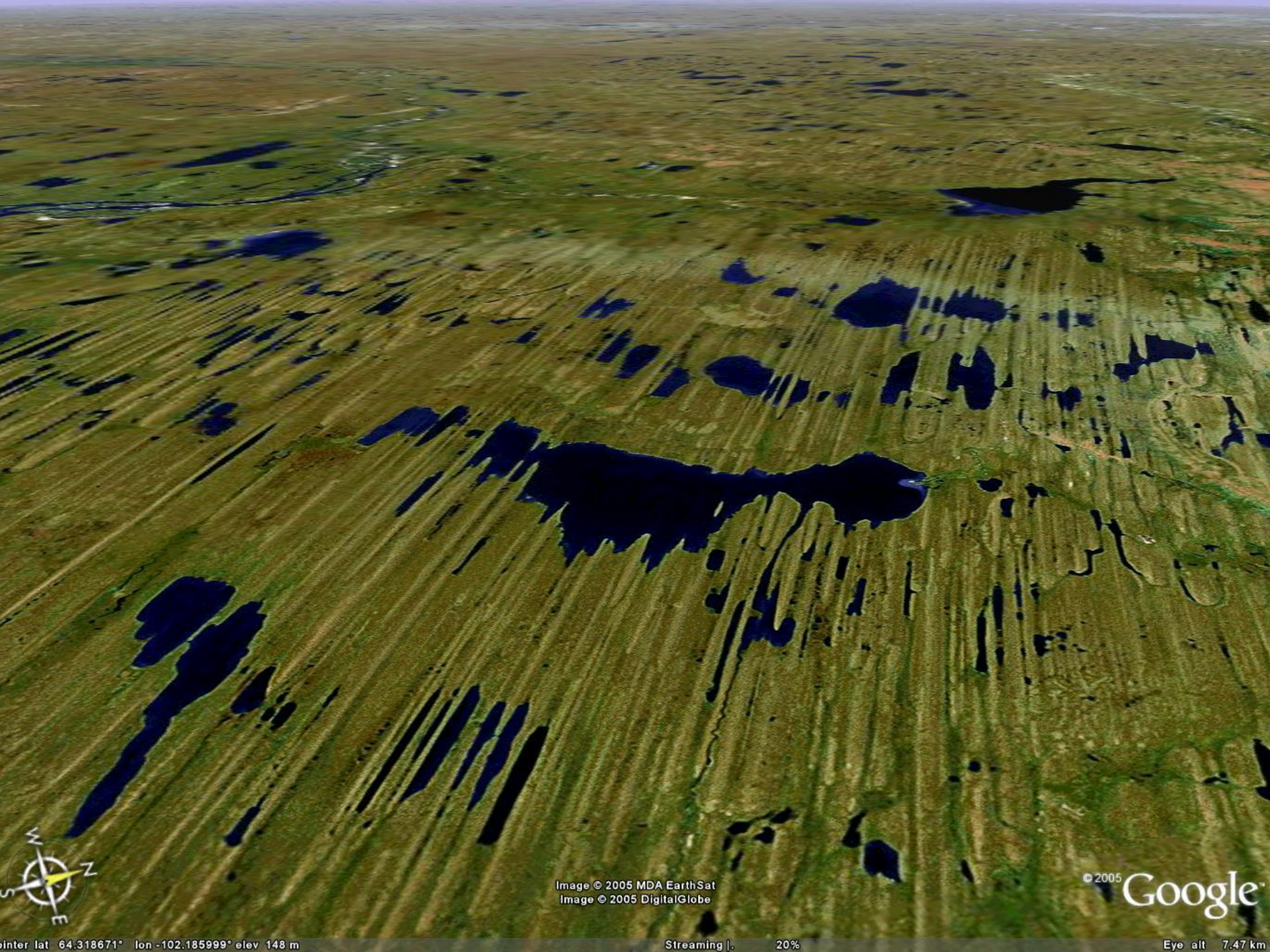


Image © 2005 MDA EarthSat
Image © 2005 DigitalGlobe

© 2005 Google

Center lat 64.318671° lon -102.185999° elev 148 m

Streaming | 20%

Eye alt 7.47 km