


Glacial erosion

A scenic landscape photograph showing a red barn in the foreground, a winding lake in the middle ground, and snow-capped mountains in the background under a cloudy sky. The barn is a traditional wooden structure with a grey roof and white trim around the windows and doors. A red tractor is parked nearby. The lake is a deep blue, winding through a valley. The mountains are rugged and covered in patches of snow. The sky is filled with soft, white clouds.

Landforms

Glacial erosion

Glacial erosional processes and resulting landforms





Sichelwannen



Roches moutonnées

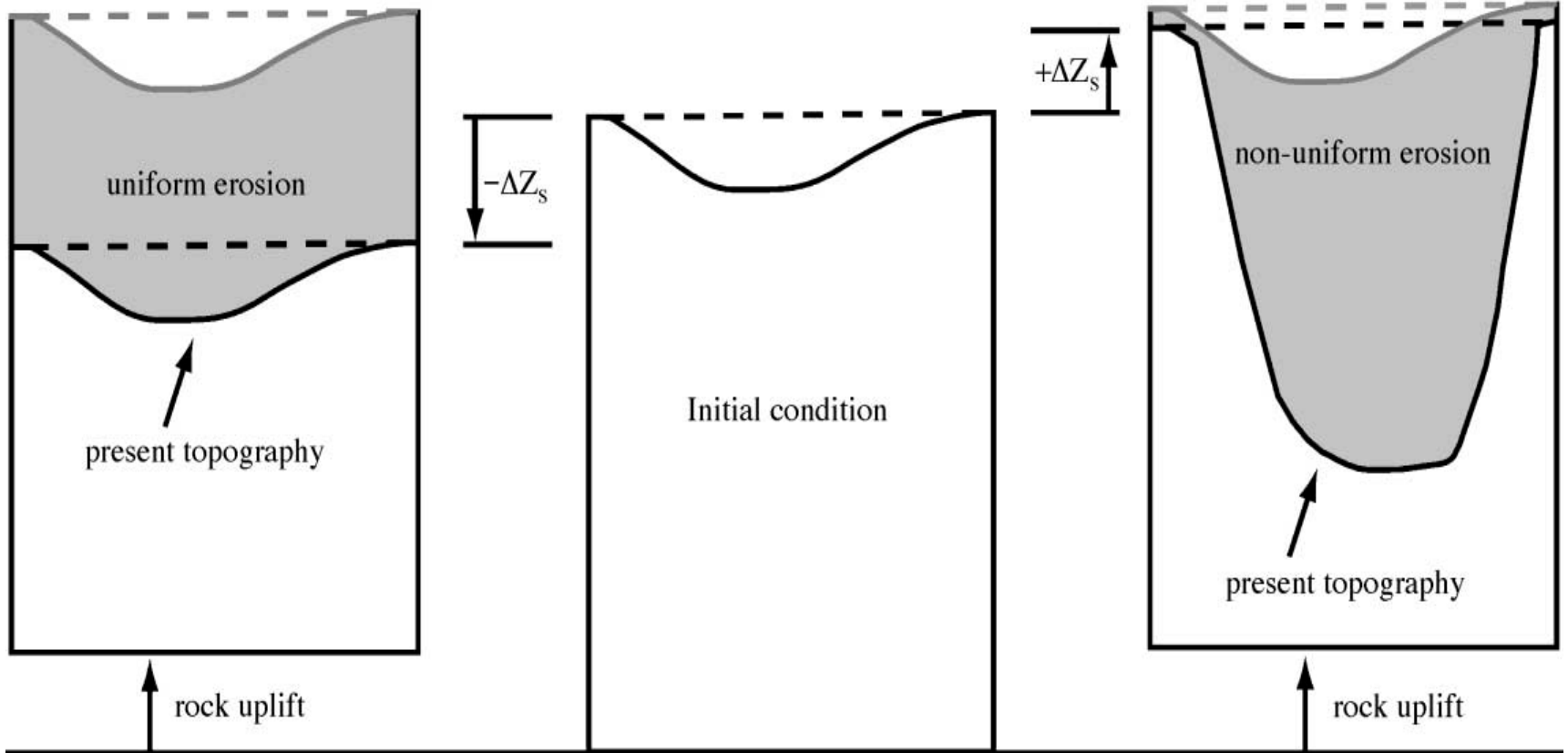


Areal scouring

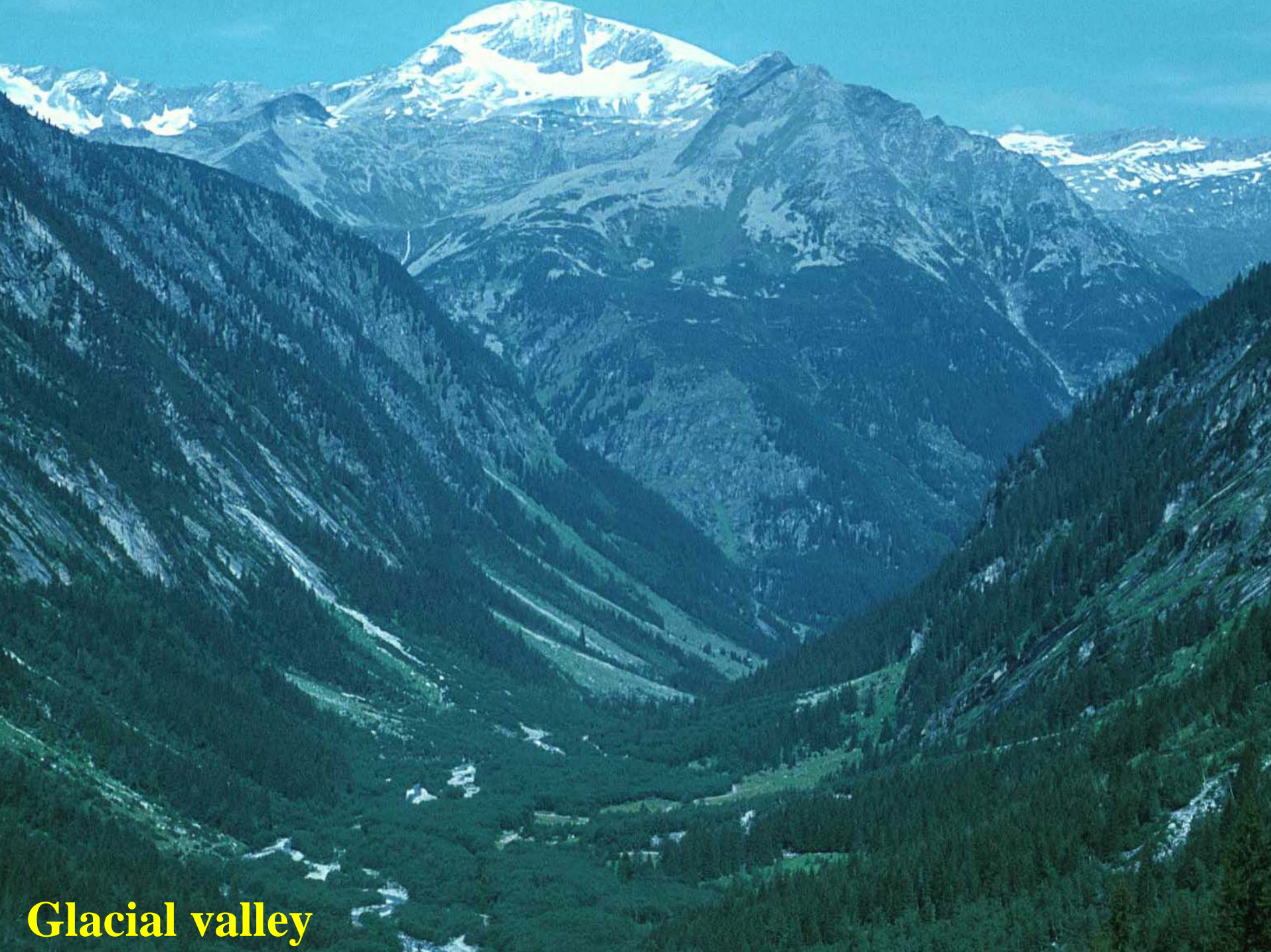


Decline in summit elevations

Increase in summit elevations



Two cases of mountain erosion. Centre panel represents initial condition. The relief is the mean elevation difference between a smooth surface connecting the highest points in the landscape (dashed line) and the current (black) or past (grey) topography.



Glacial valley





Oppdal, Norway



Glacial fjord valley



Image © 2006 MDA EarthSat
Image © 2006 DigitalGlobe

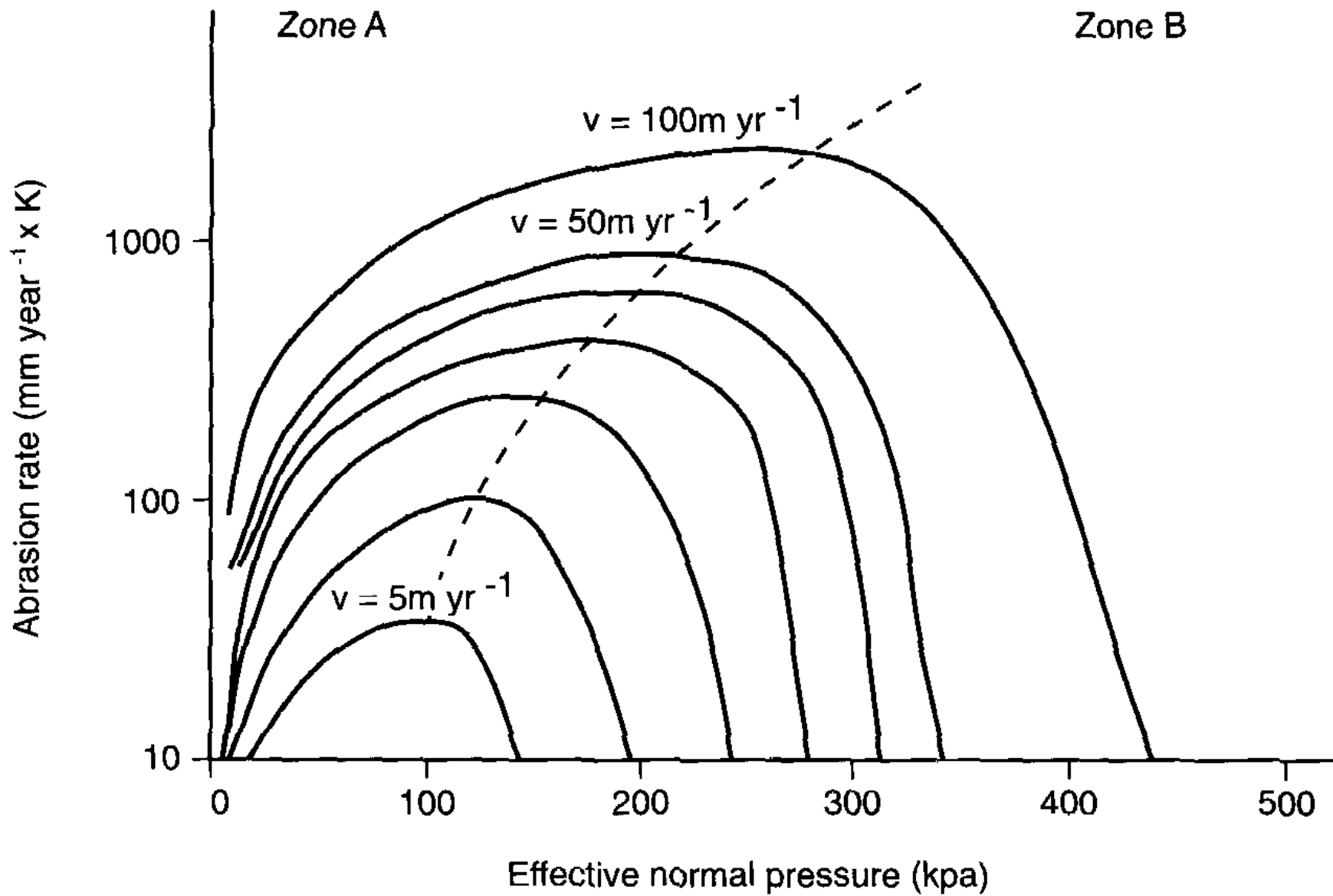
© 2005 Go



Image © 2005 MDA EarthSat

© 2005 Goo







Repeated glaciations



Hanging valleys

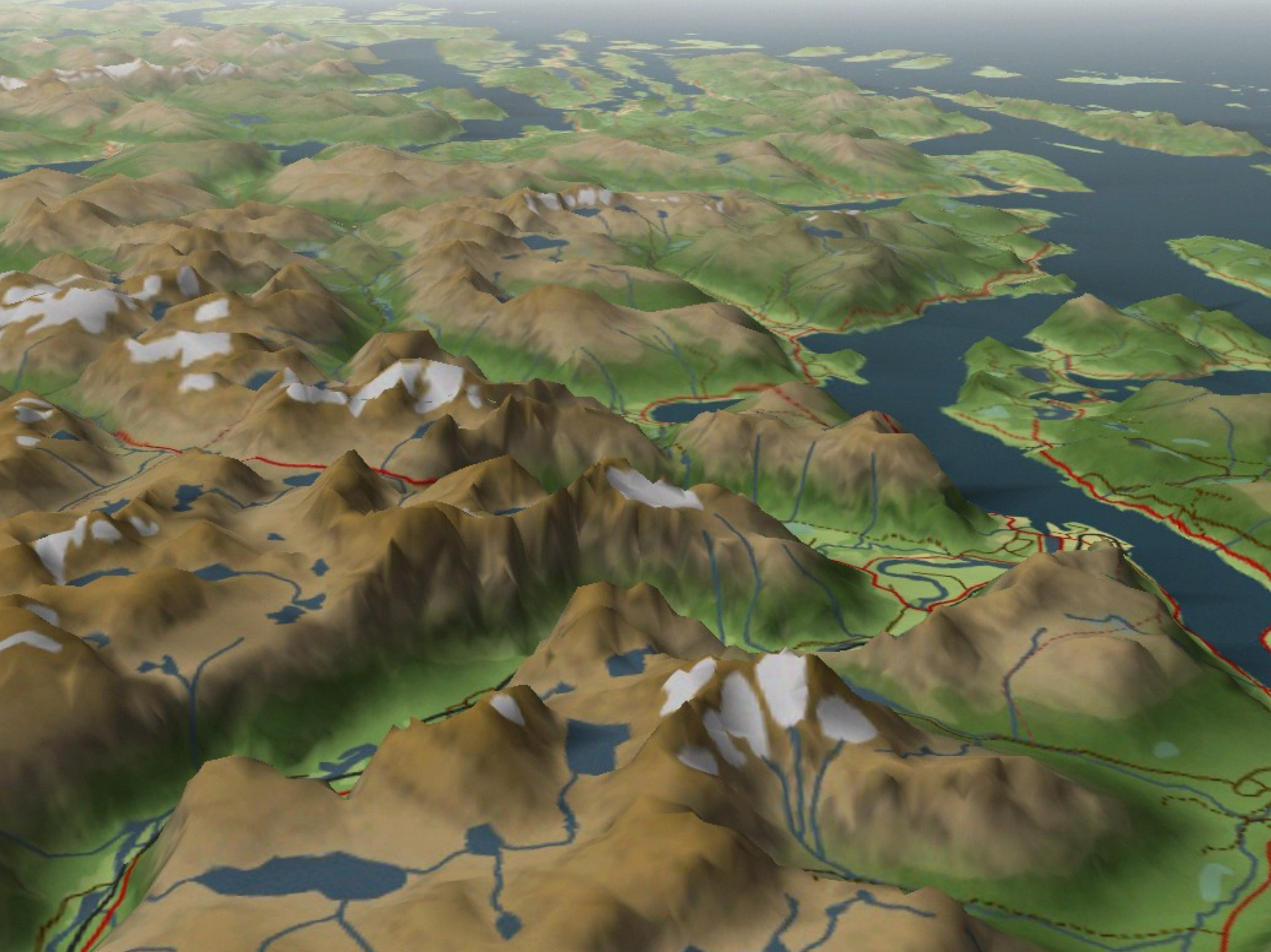


Rock slides ?



Photo: Ketil Isaksen







Strandflat





Cirque valleys





Crag and tail



Kaldbak



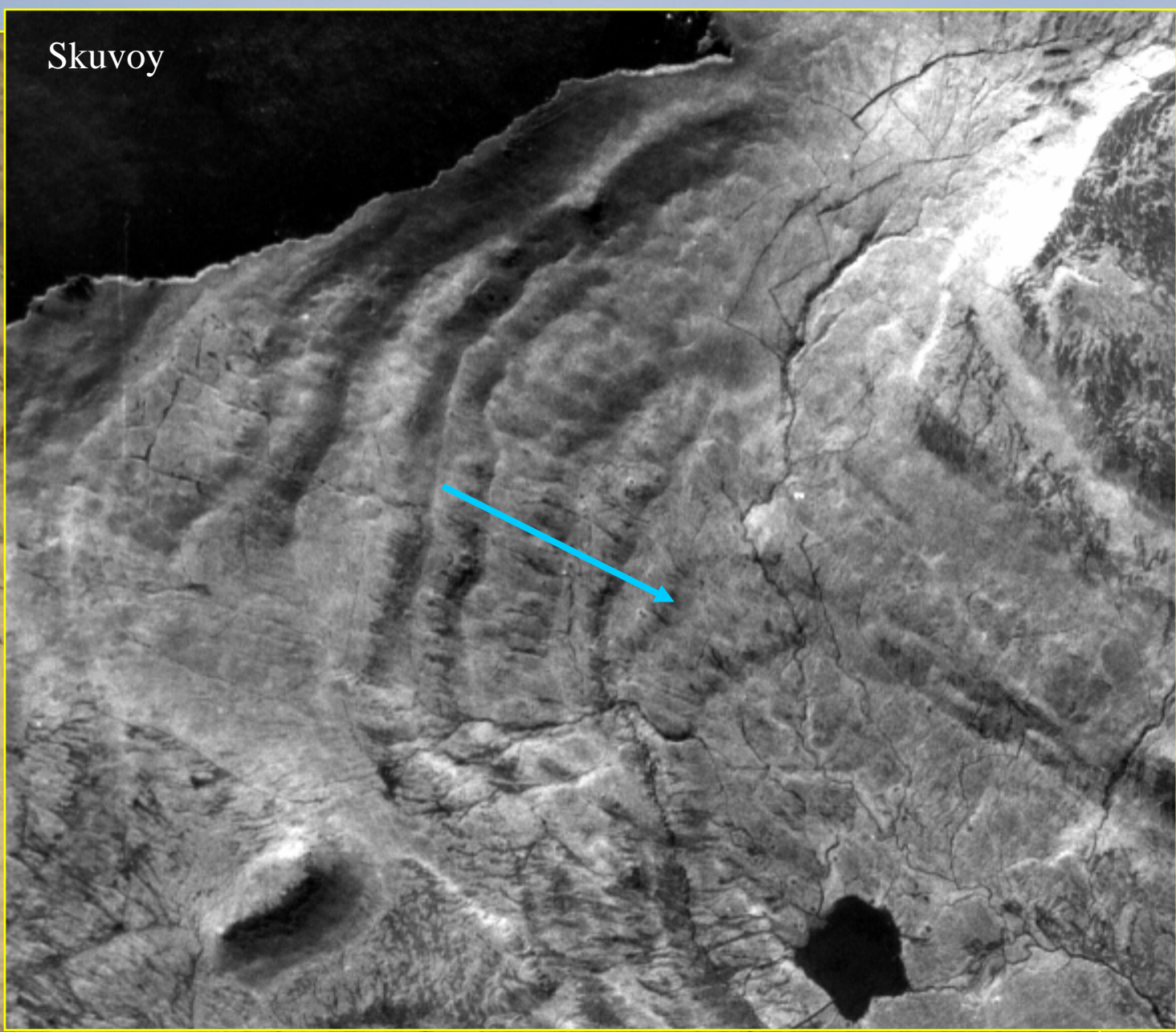


Edinburgh Castle, Scotland, on crag and tail. Royal Mile extends along tail to left. Ice flow was upper right to lower left.



Drumlins

Skuvoy



Nolsoy







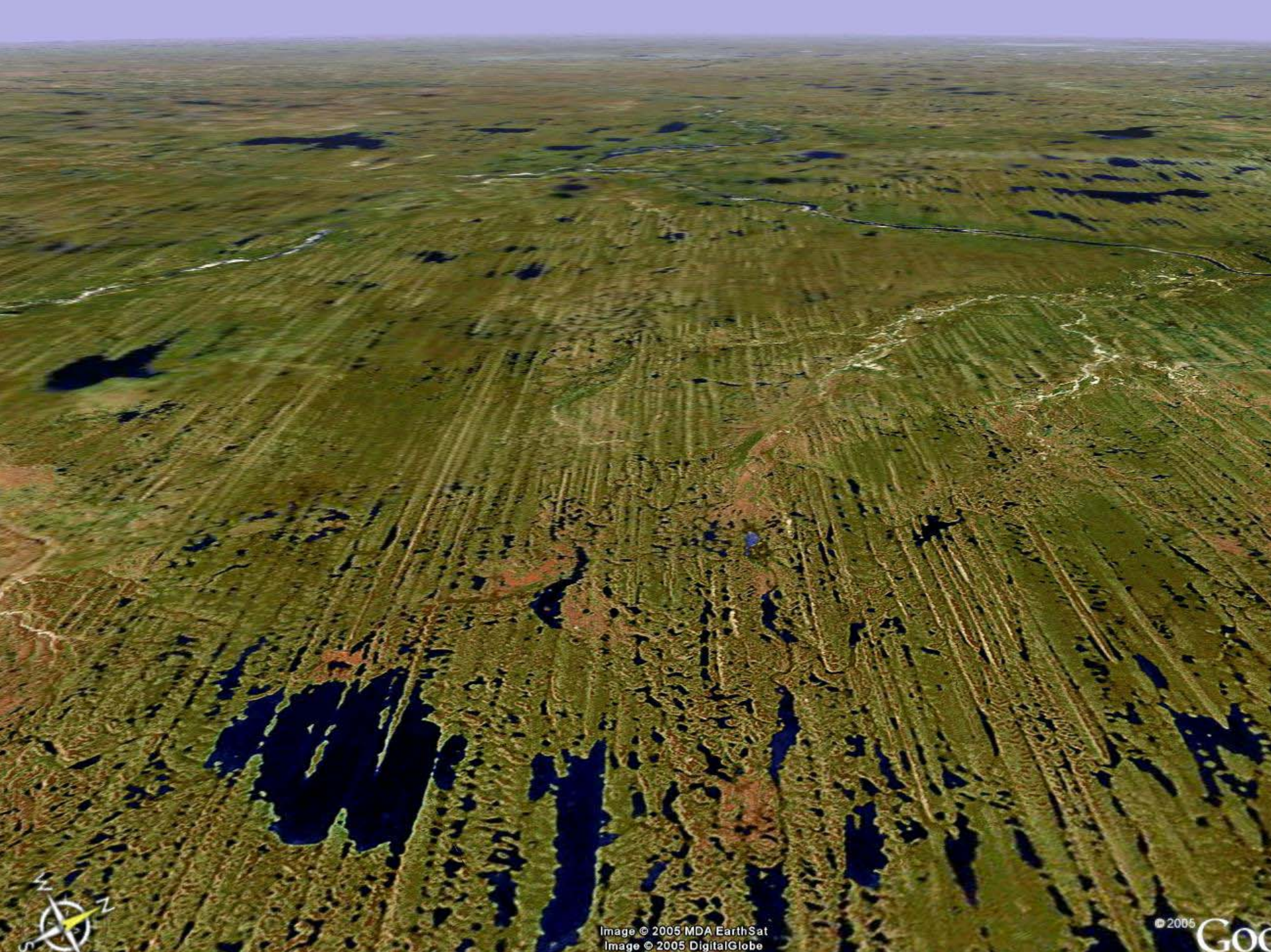


Image © 2005 MDA EarthSat
Image © 2005 DigitalGlobe

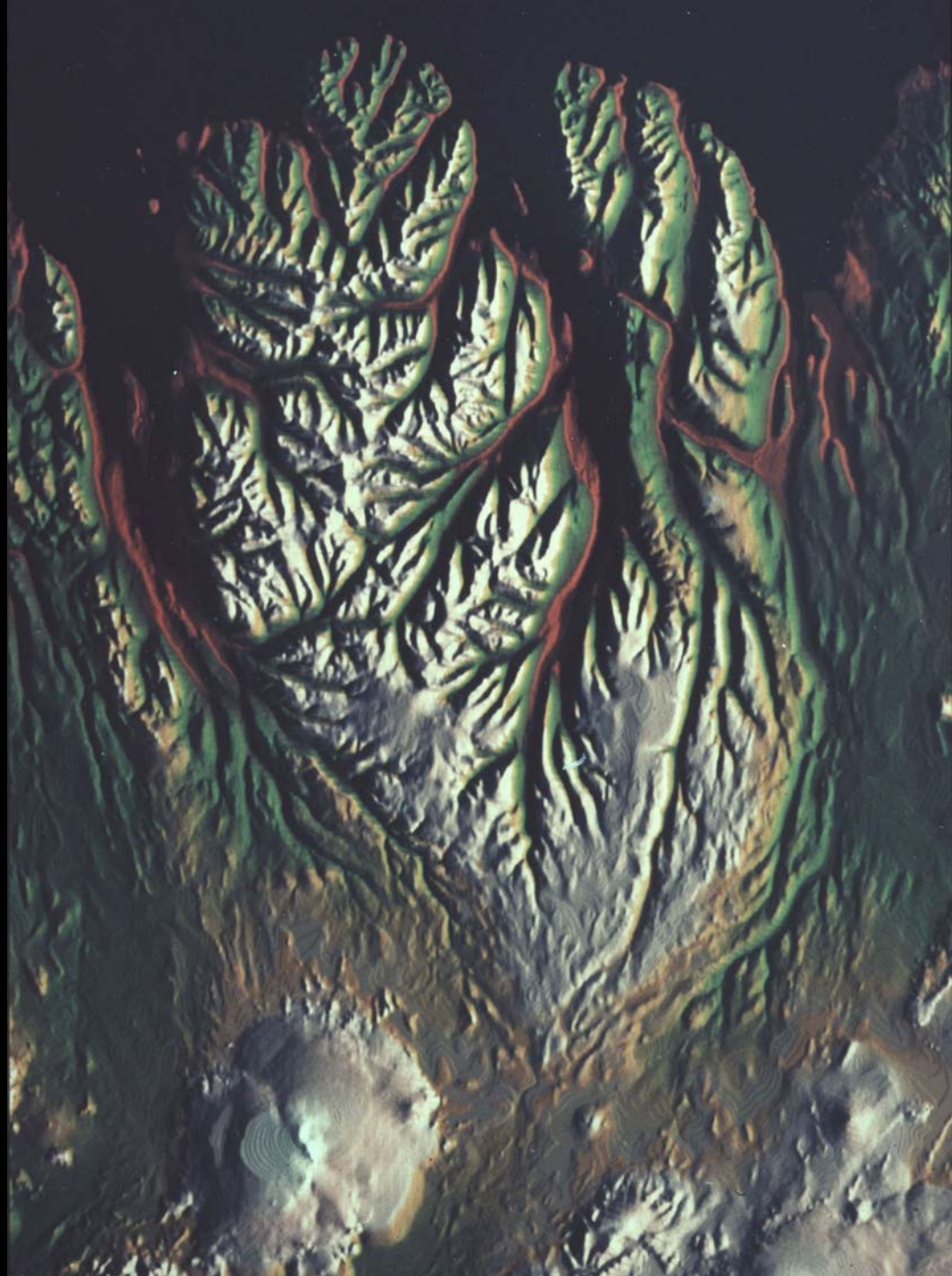
© 2005 Google

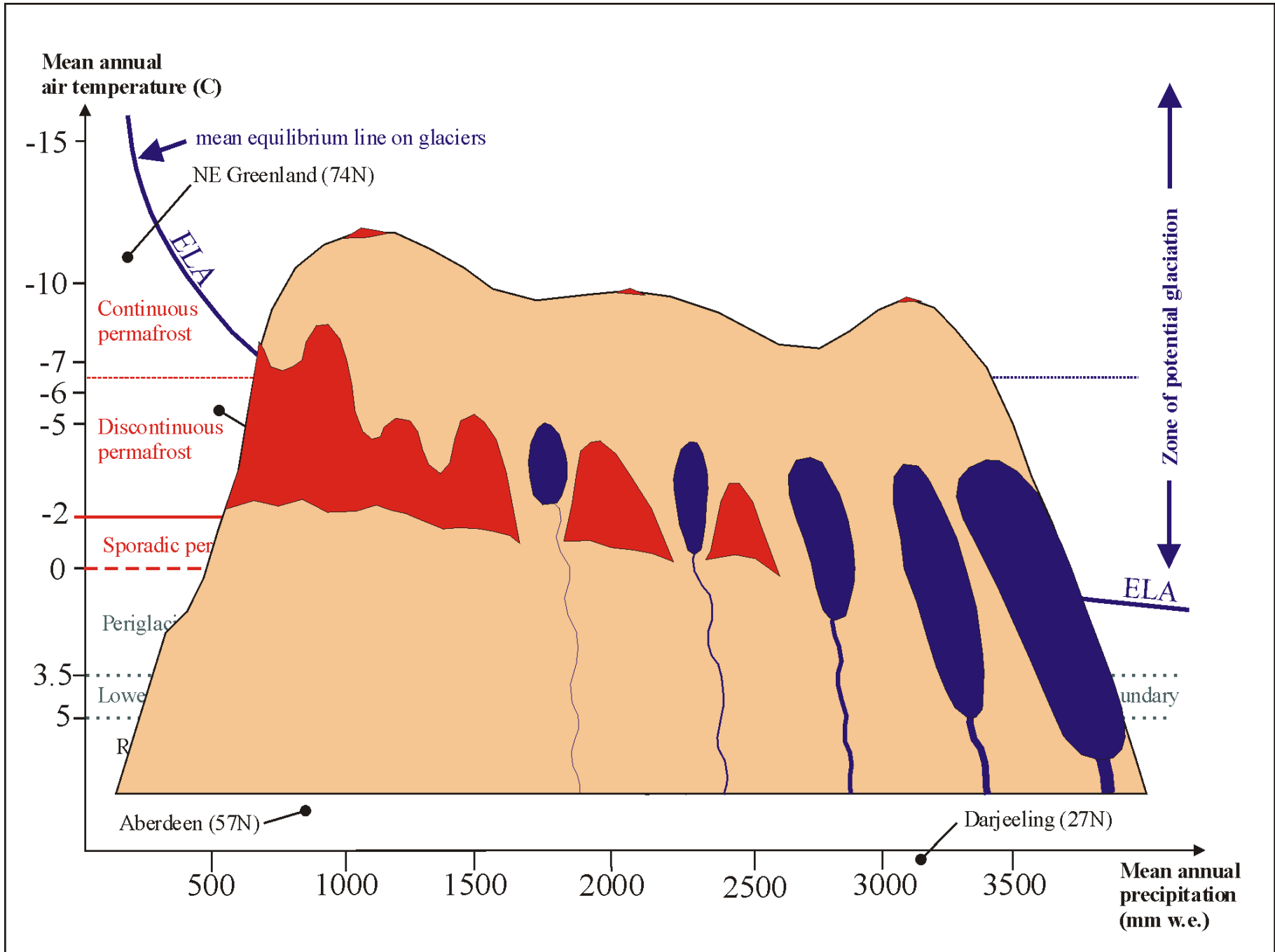




Glacial striae





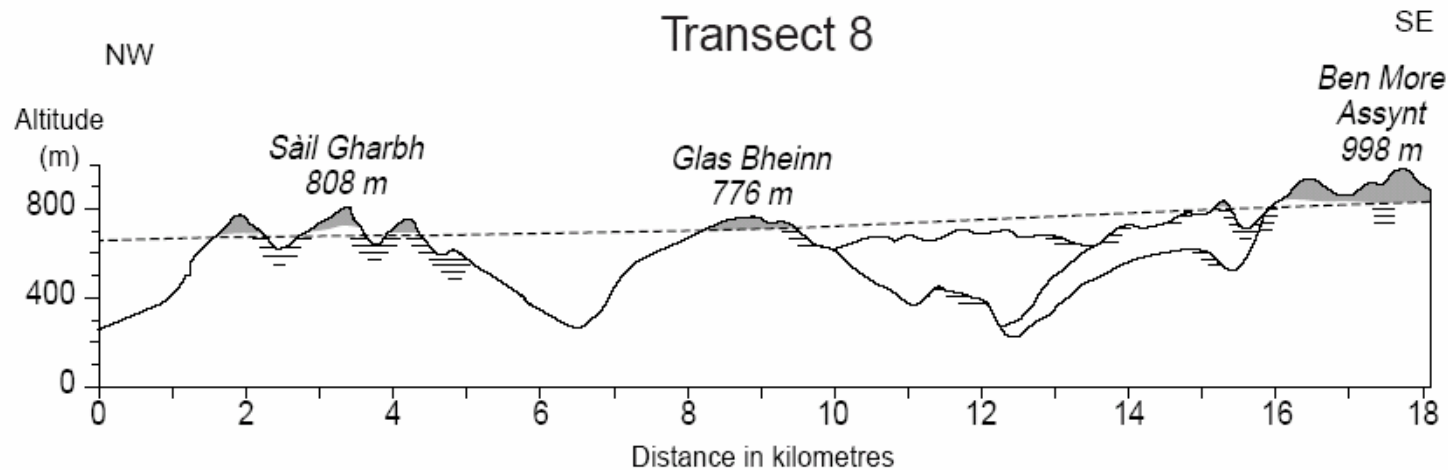
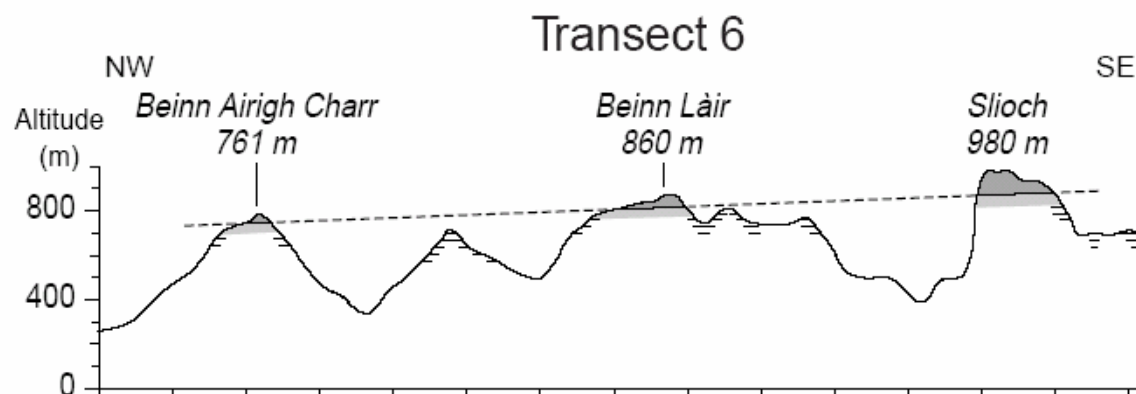
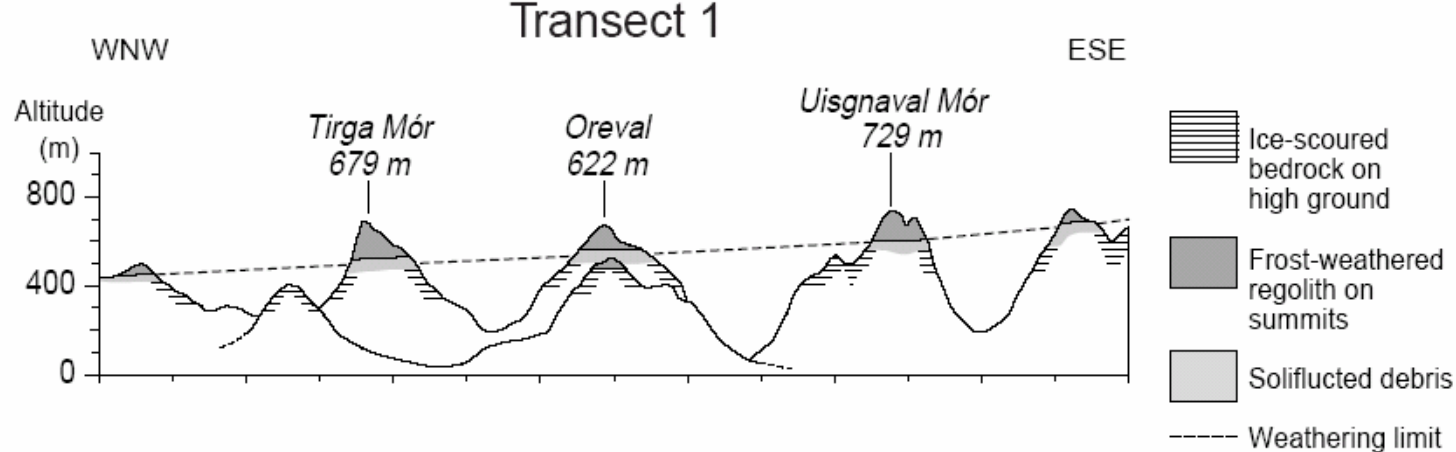






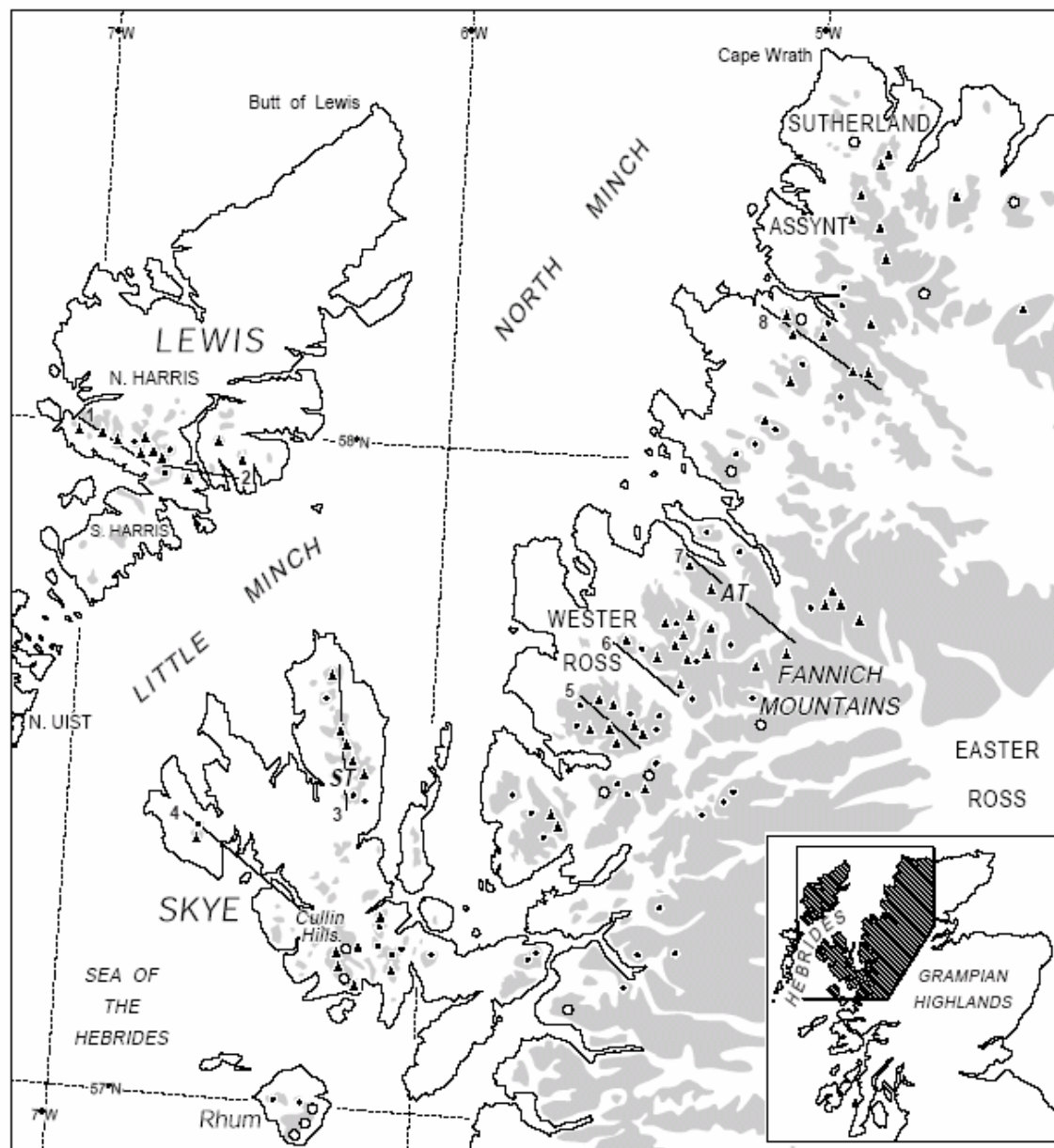
Glacial trimline











- ▲ Mountains with high-level weathering limit
- Mountains with glacially eroded summits
- Mountains on which only the minimum altitude of glacial erosion was detected

- 3 Flowline transect
- AT An Teallach
- ST The Storr

