

Glacial transport processes 1



Glacial transport processes 1

1: Examples of englacial and supraglacial debris transport

2: Subglacial transport

3: Meltwater transport

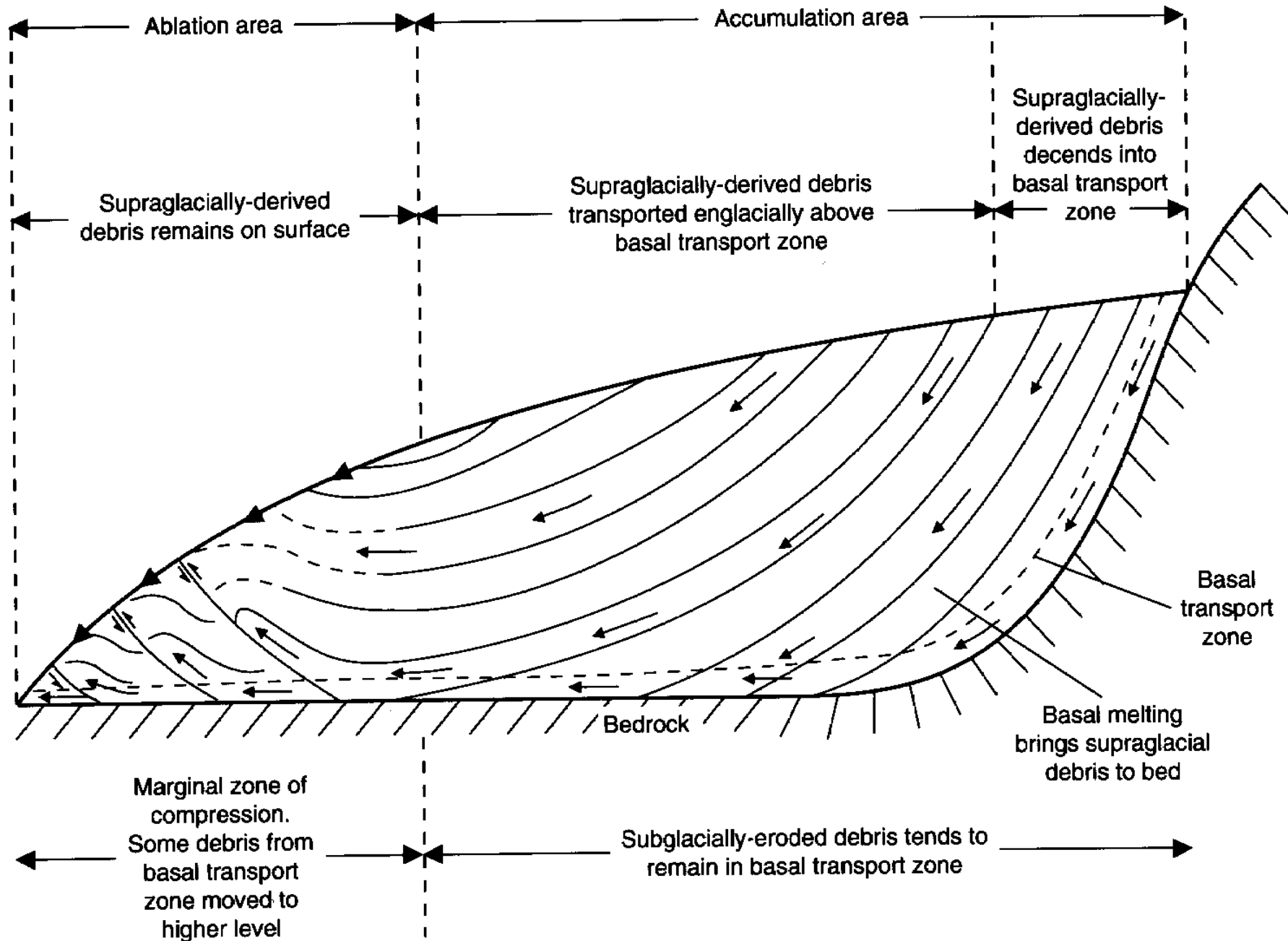
Examples of glacial transport



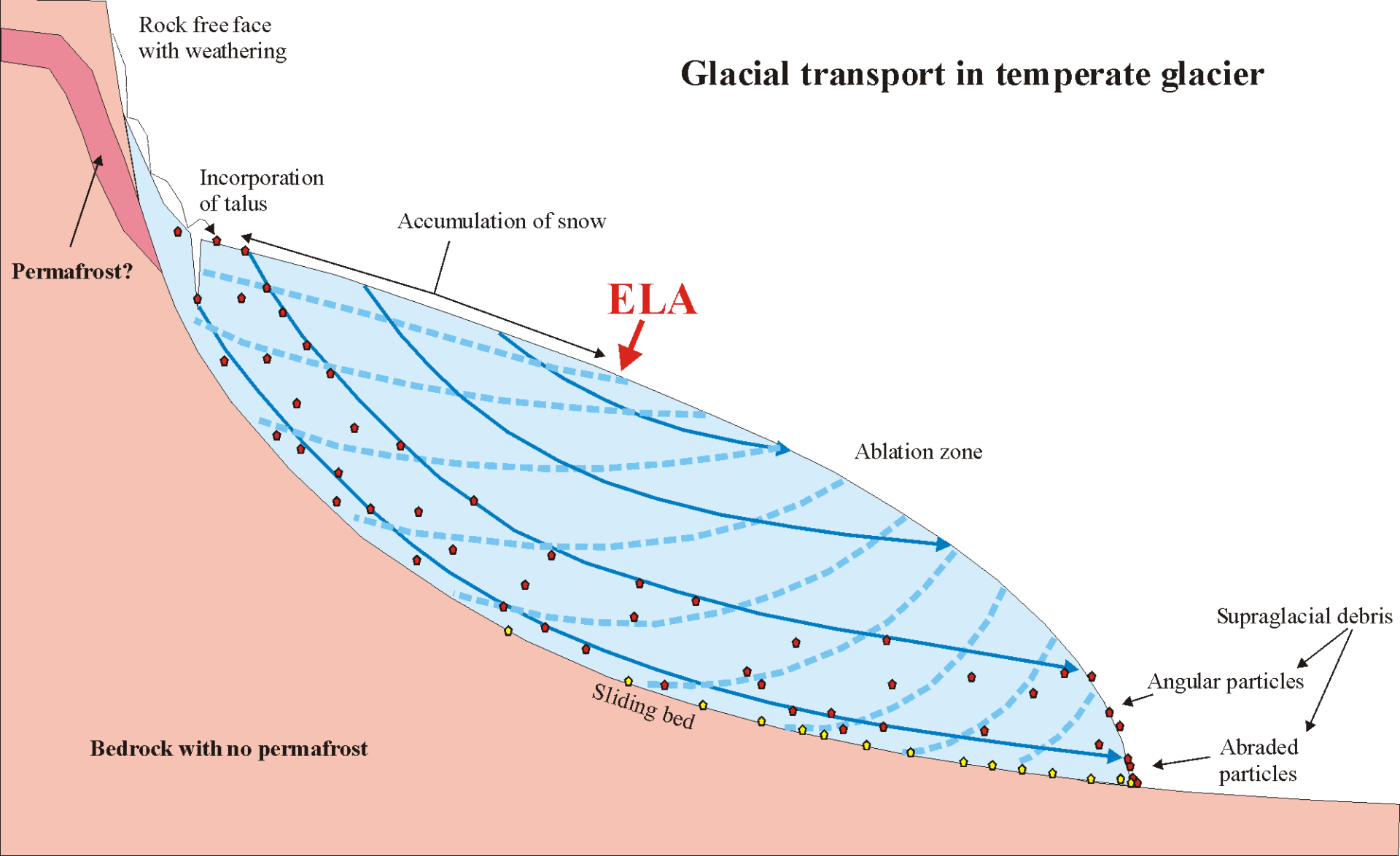




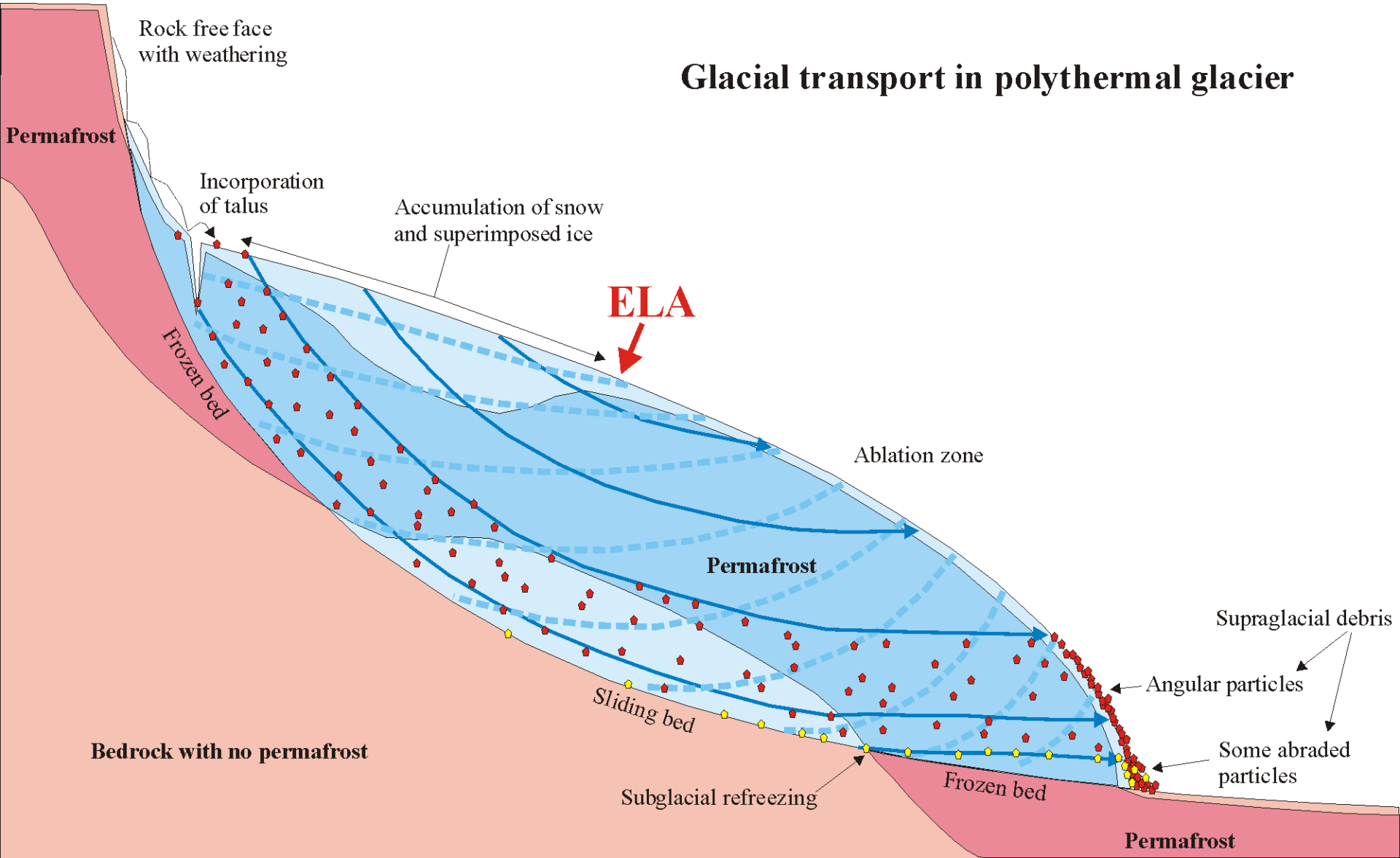
Essentials of glacial transport



Glacial transport in temperate glacier



Glacial transport in polythermal glacier



Supraglacial transport











Englacial transport







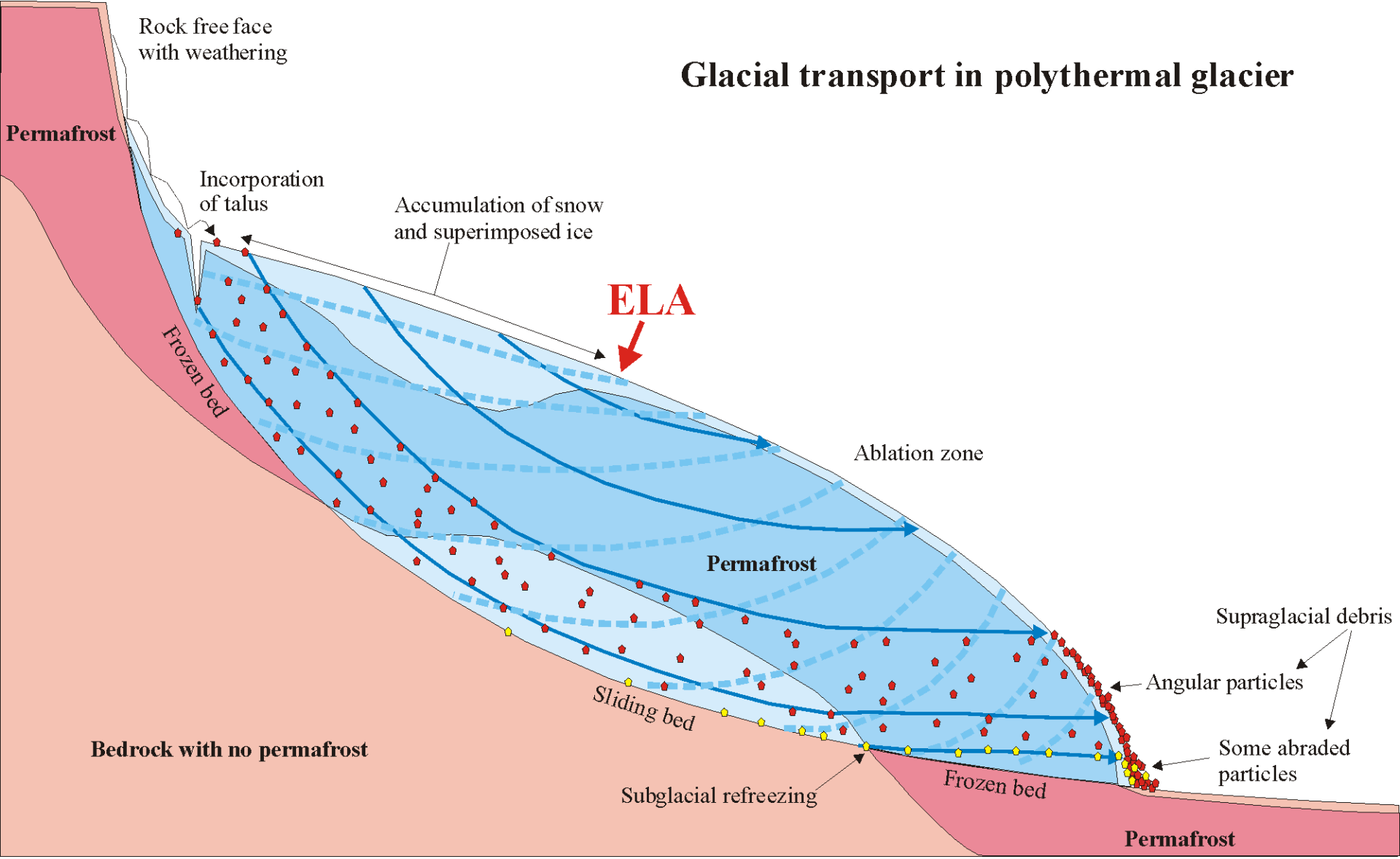




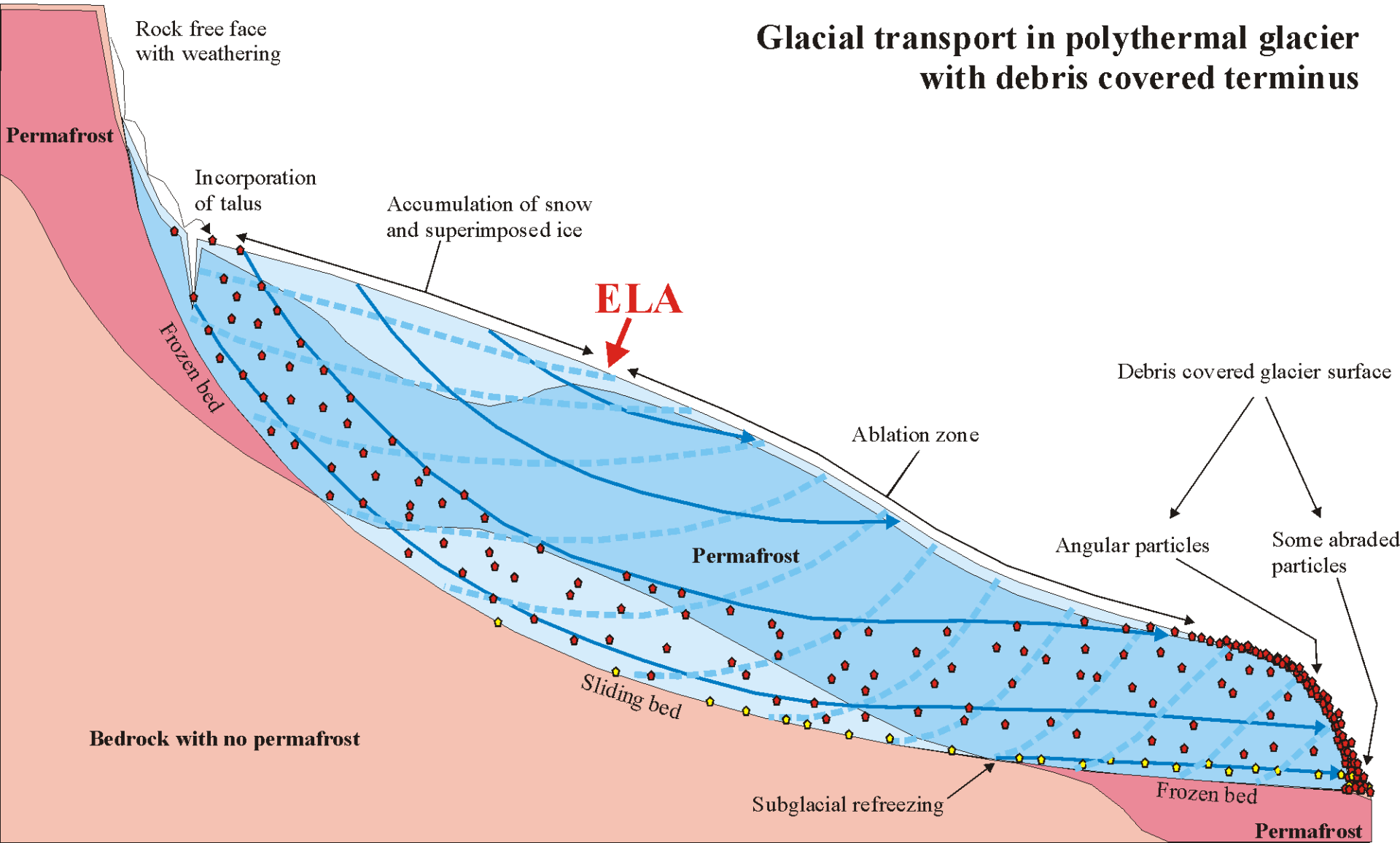


Glacial transport in permafrost regions

Glacial transport in polythermal glacier



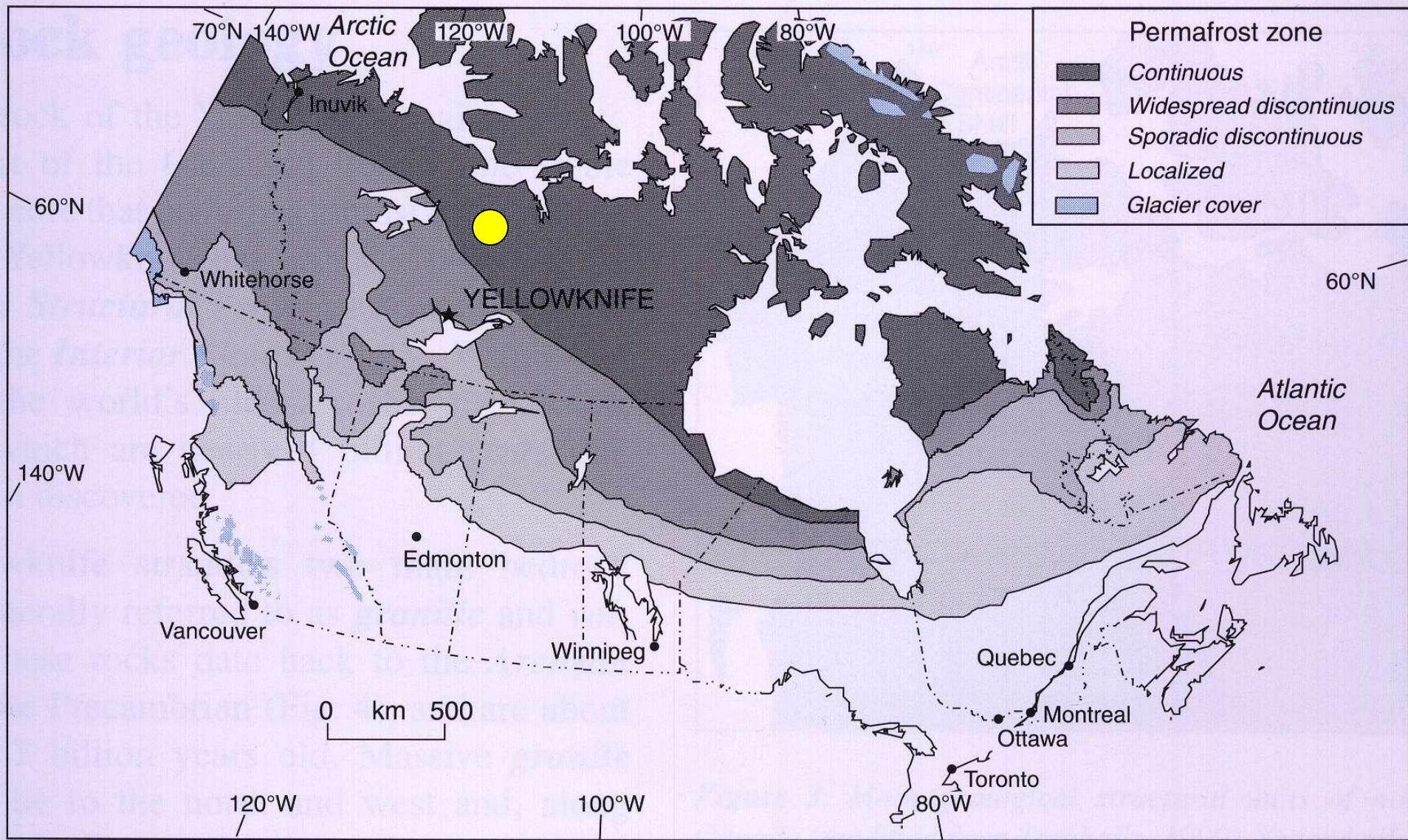
Glacial transport in polythermal glacier with debris covered terminus















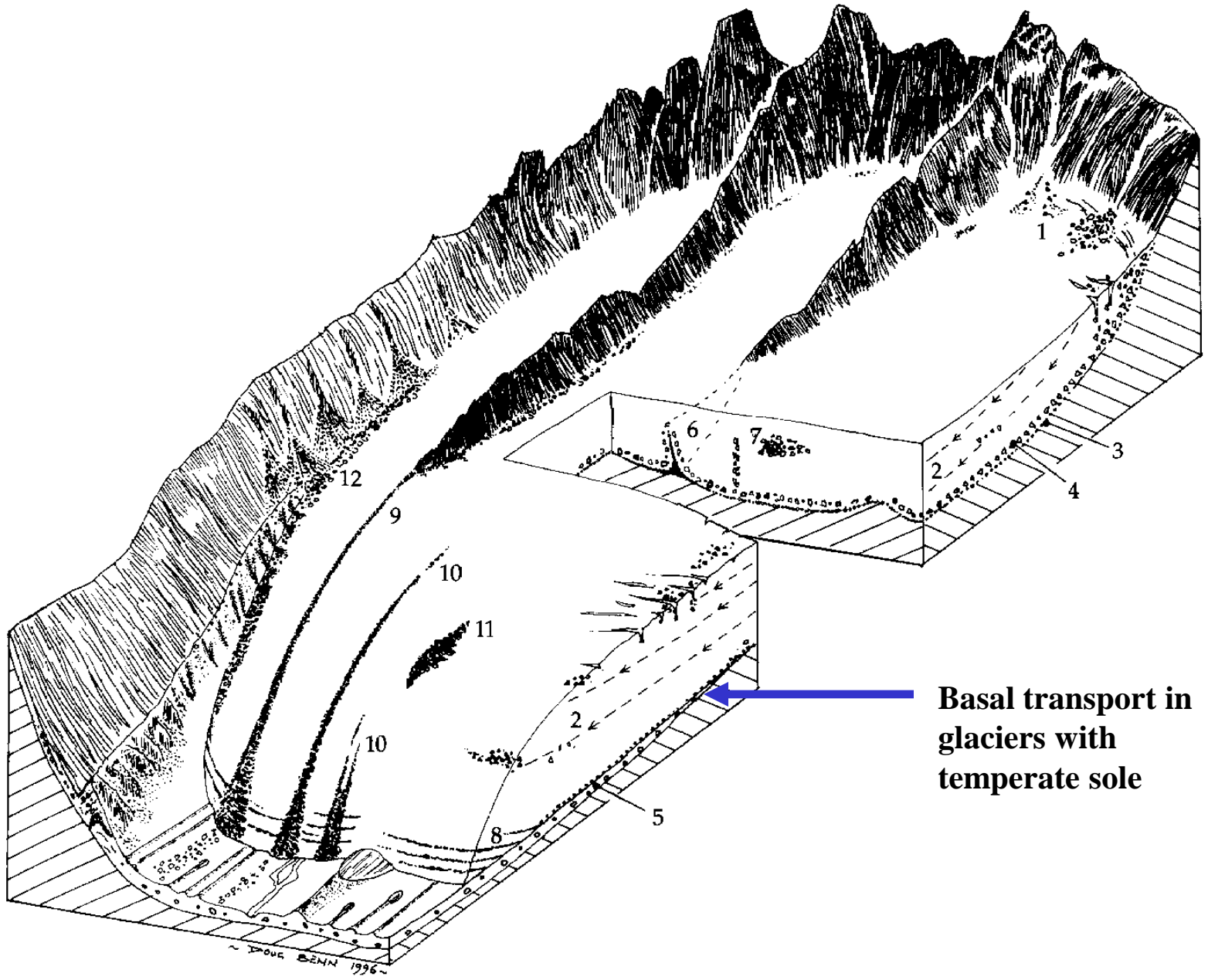








Basal transport

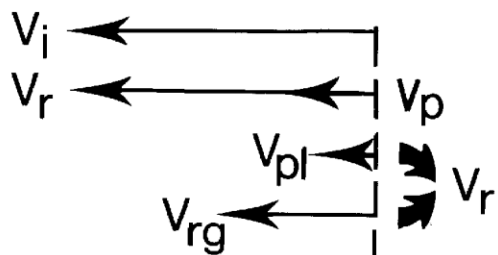


Basal transport in glaciers with temperate sole

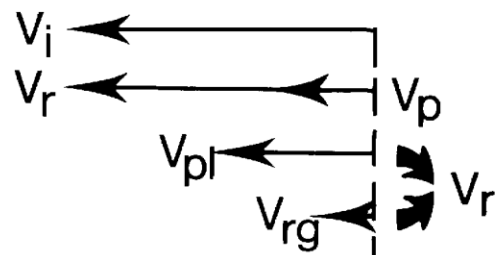
~ DOUG BENN 1996 ~



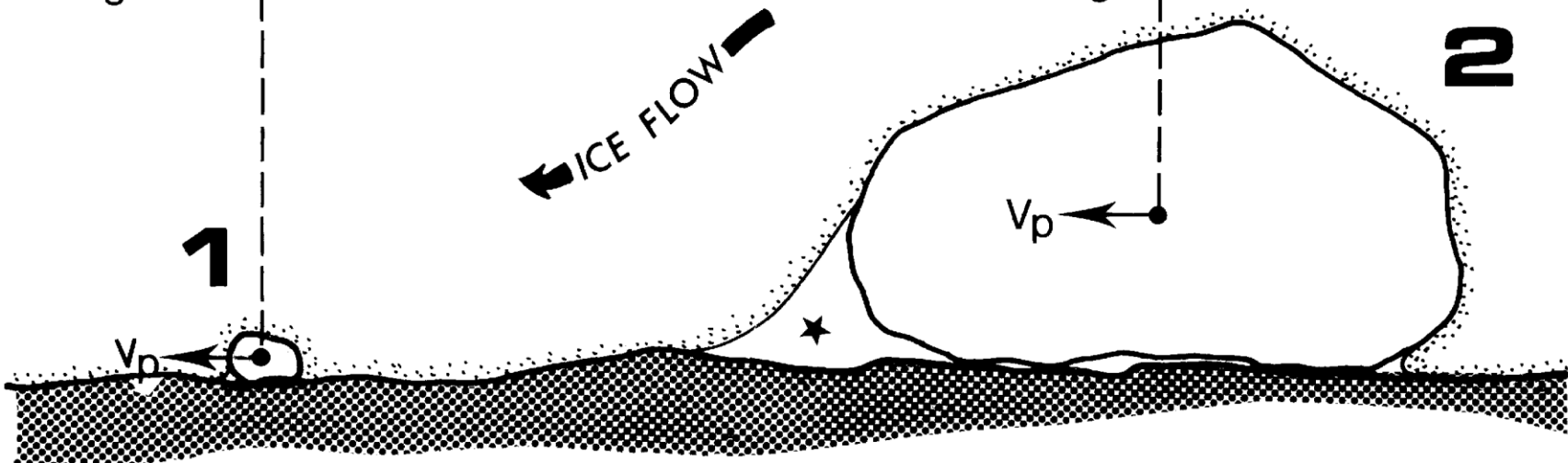




ICE FLOW



2









Boulder lodged at Myrdalsjökull, Iceland



Lodgement boulder at Storbreen, Jotunheimen



Fluted moraine at Storbreen, Jotunheimen



Lodgement till at Storbrean, Jotunheimen



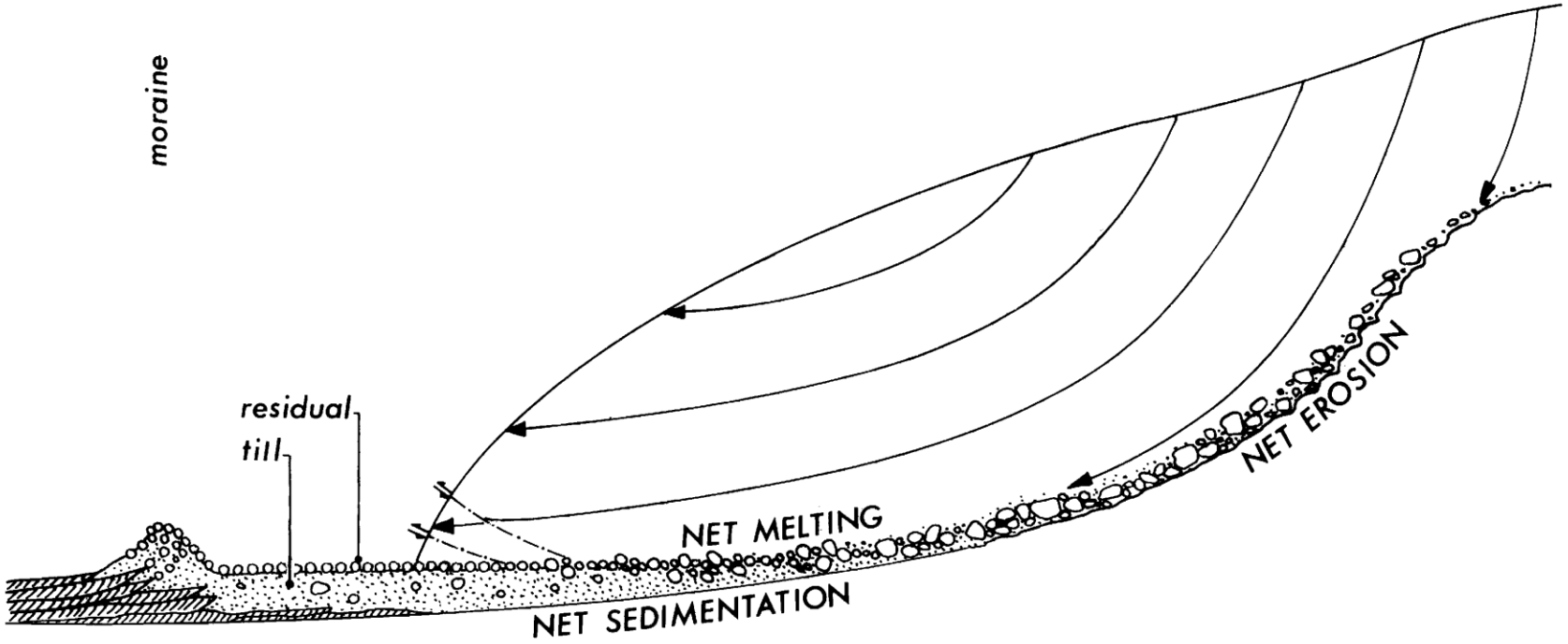


| | ground moraine |

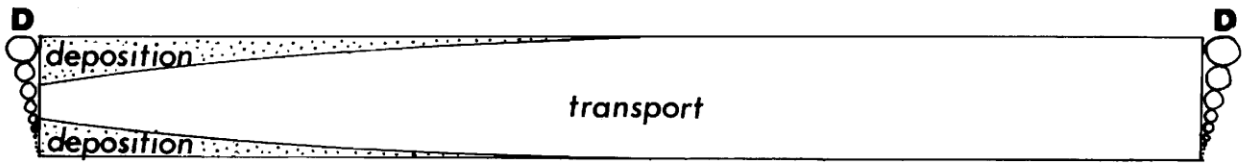
glacier

moraine

residual
till



residual



deposition

transport

deposition

D

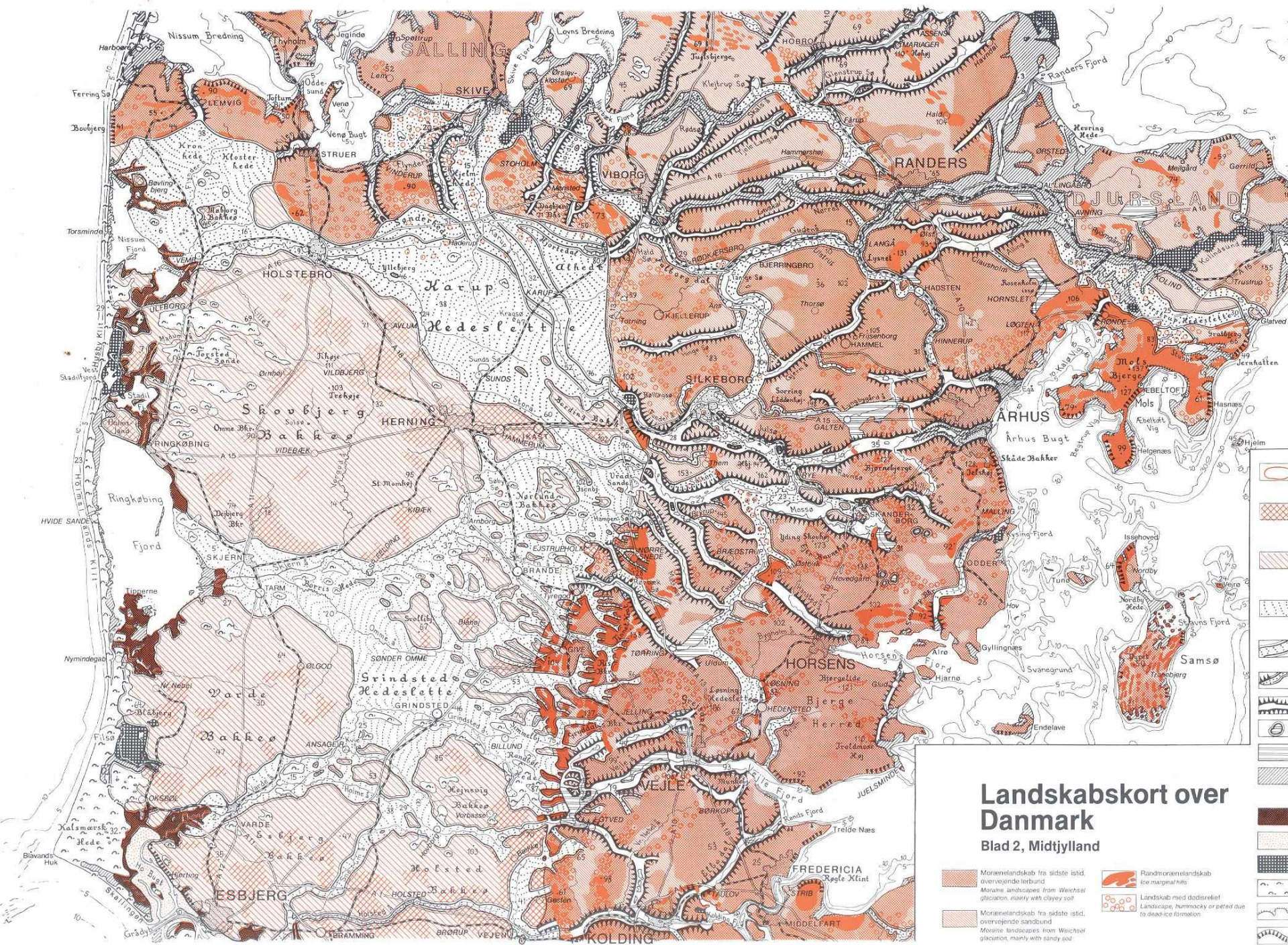
D

Meltwater transport



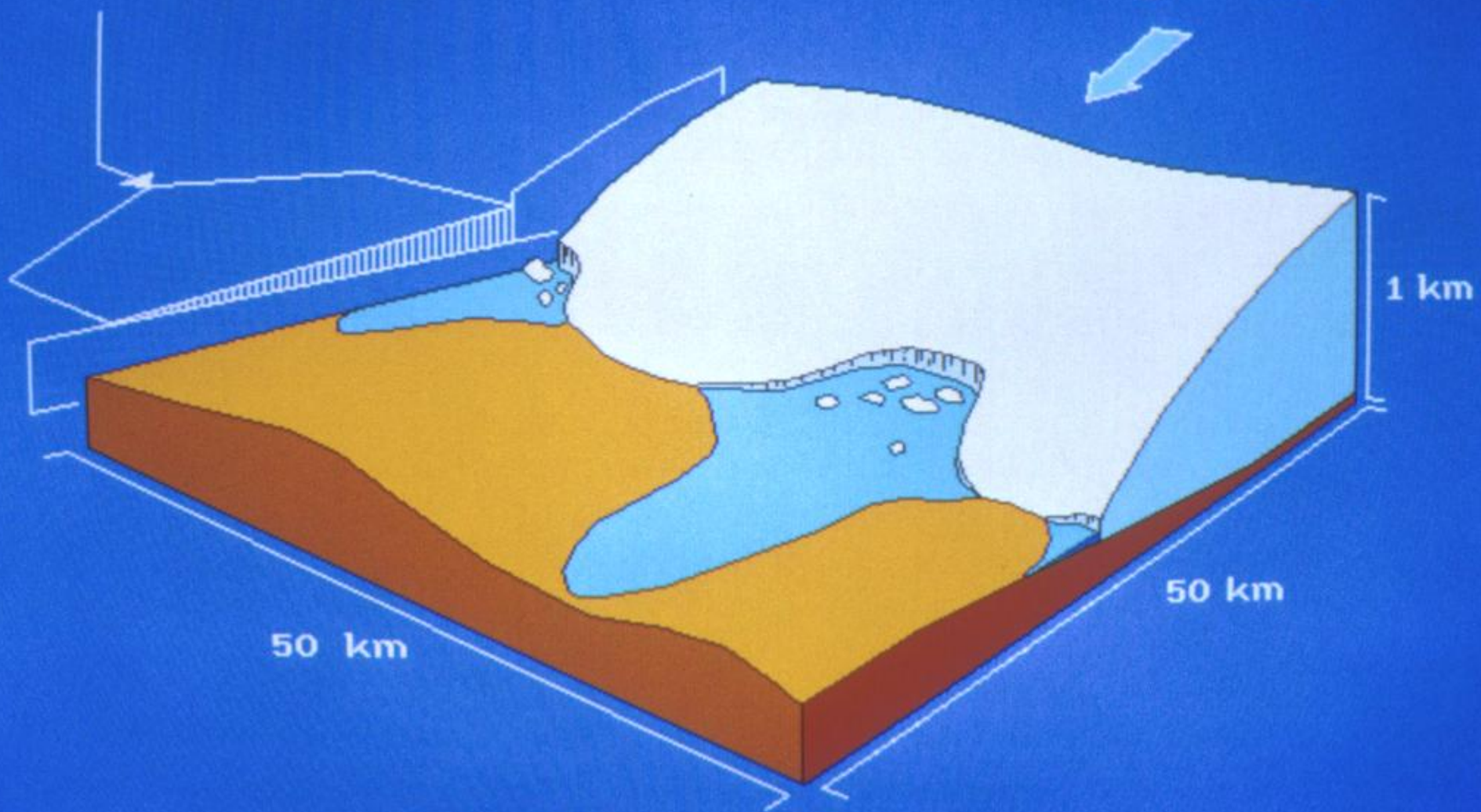







Regional topographic low
due to isostatic depression

High winds





An aerial photograph showing a wide, flat, sandy landscape. In the foreground, a dark, winding road or path cuts across the terrain. The middle ground is dominated by a vast, flat expanse of sand, with some darker, possibly rocky or vegetated areas. In the background, a range of mountains is visible under a clear sky. The overall scene is desolate and expansive.

Skeiðarárjökull

Gígjukvísl

Súla

Horft til austurs yfir Skeiðarársand 6. nóv 1996
Seen to the east over Skeiðarársandur 6. Nov 1996











