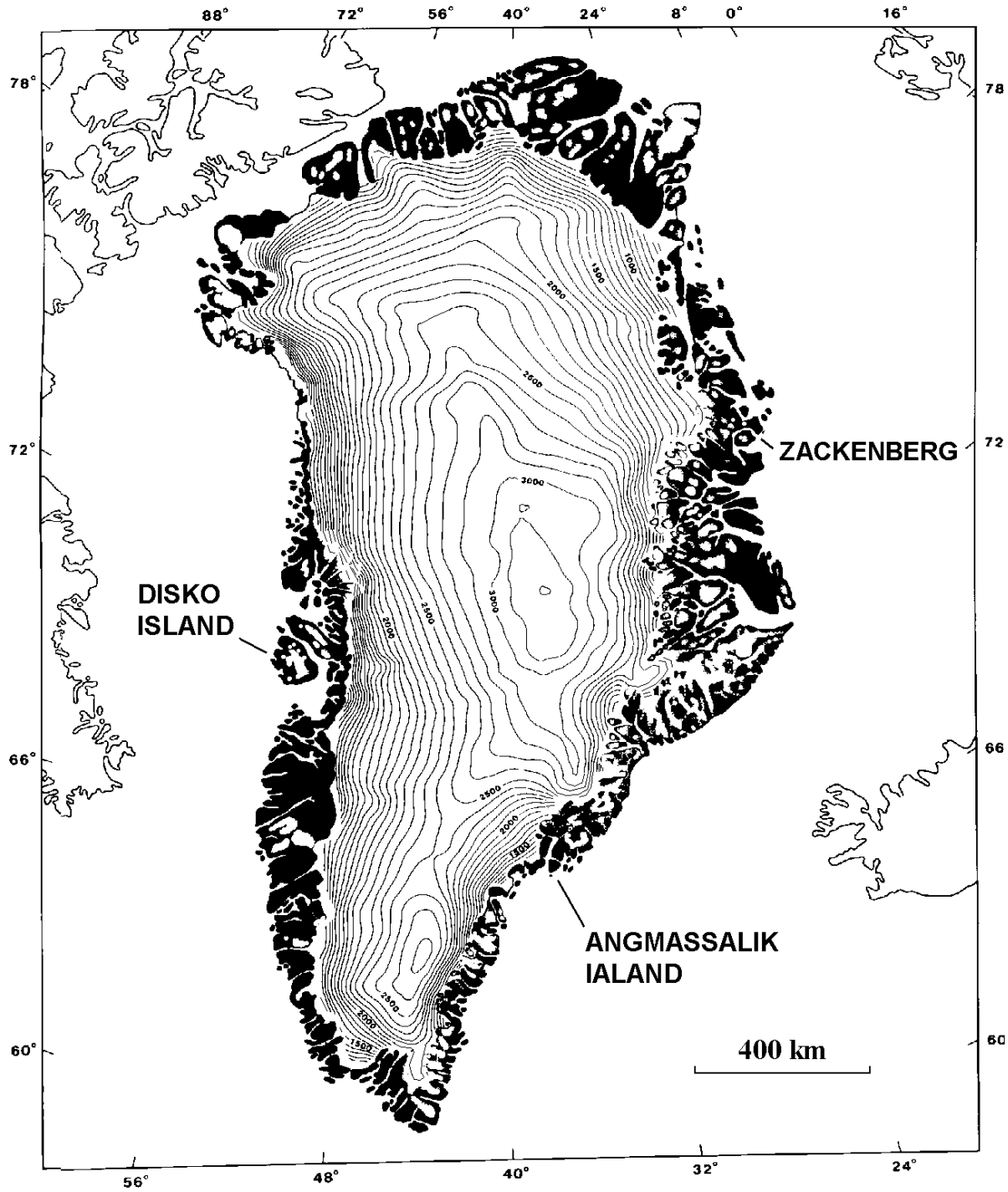


The geomorphology of Greenland



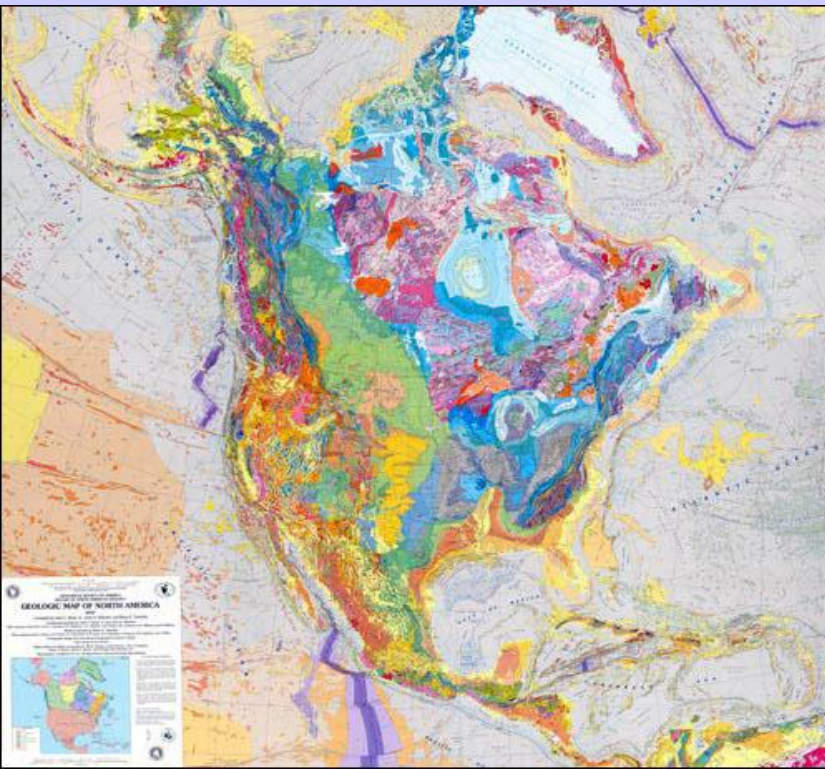


Greenland is part of the North American continent

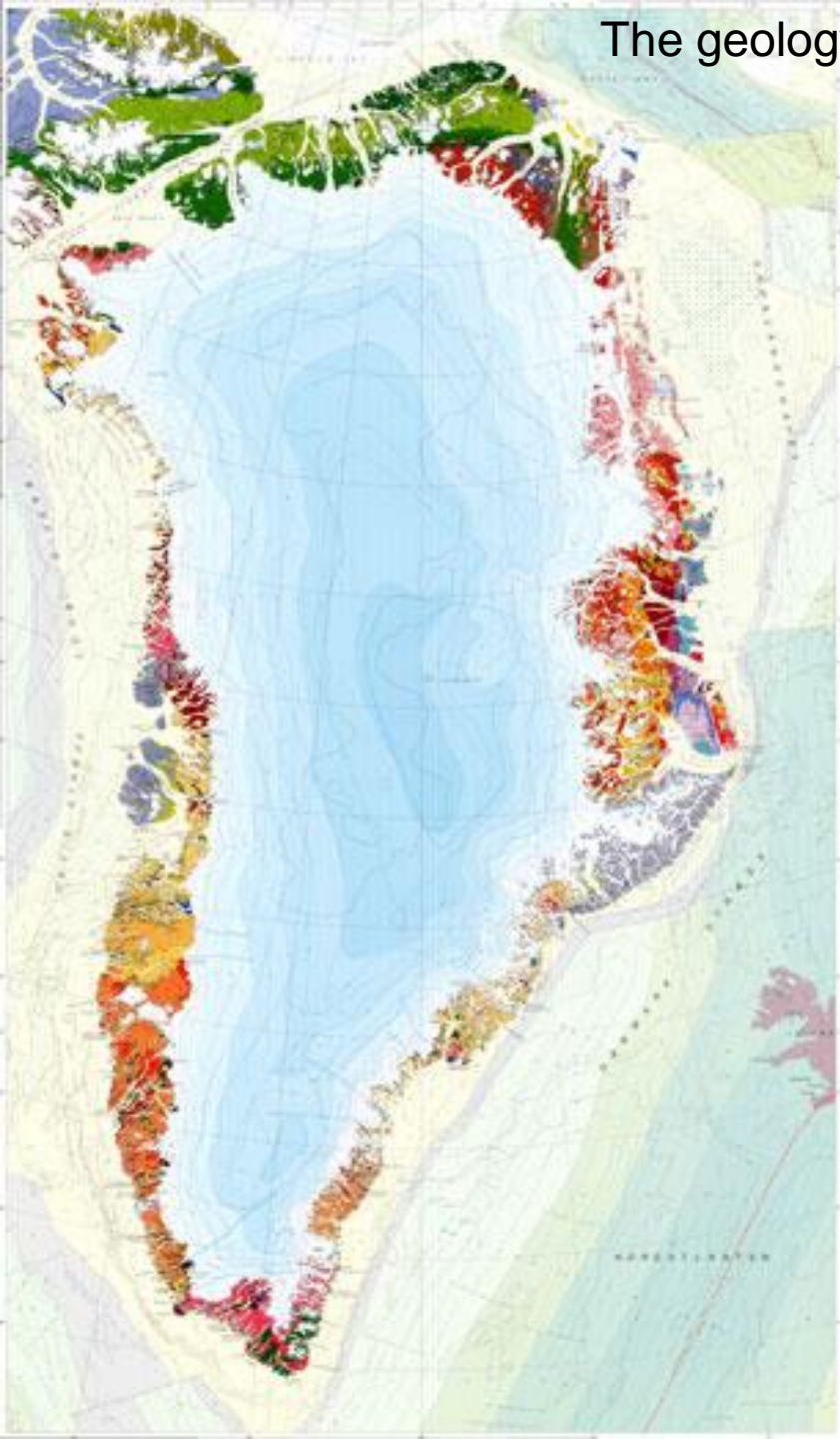
Size: 2.2 mill km², 400.000 km² not ice-covered

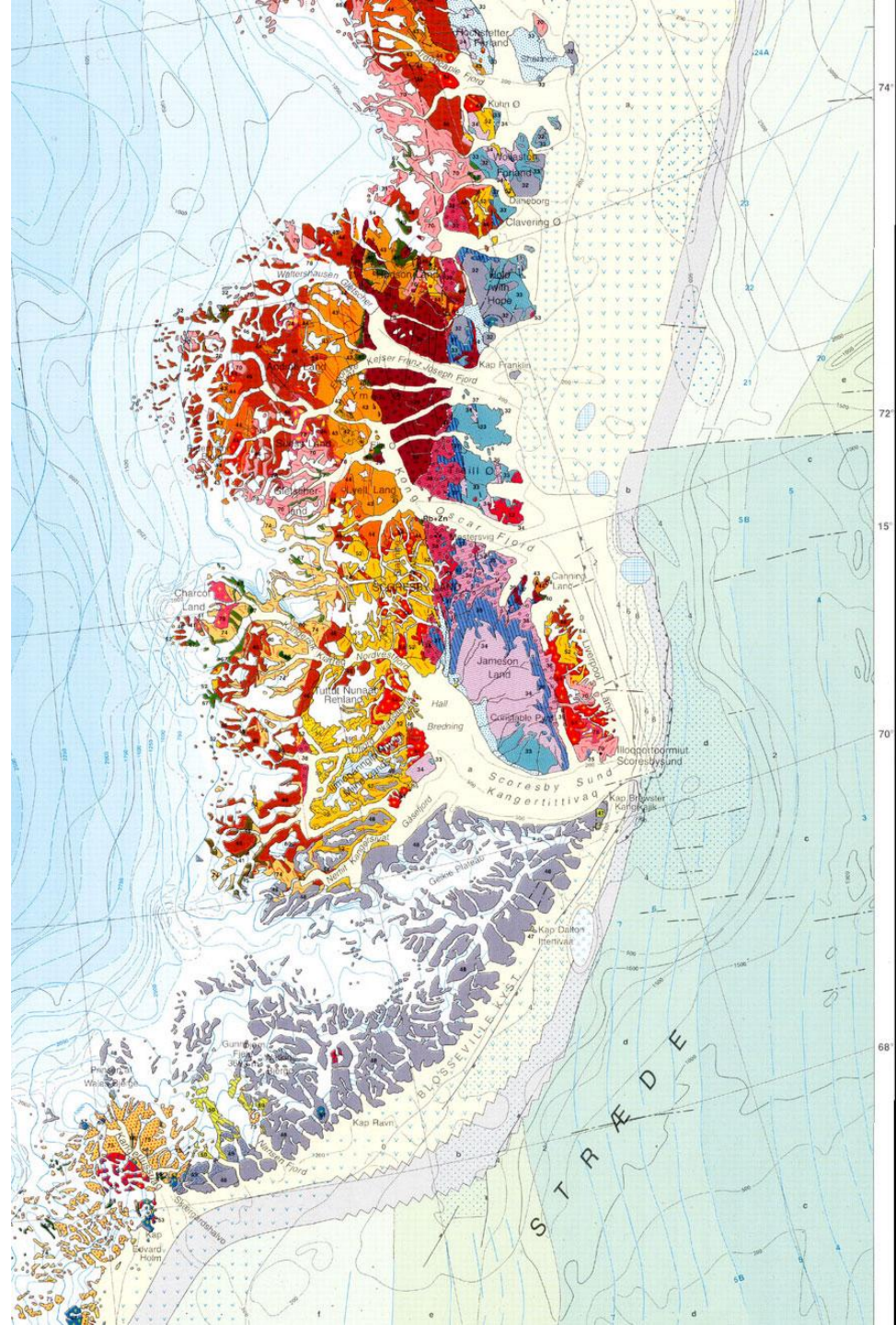
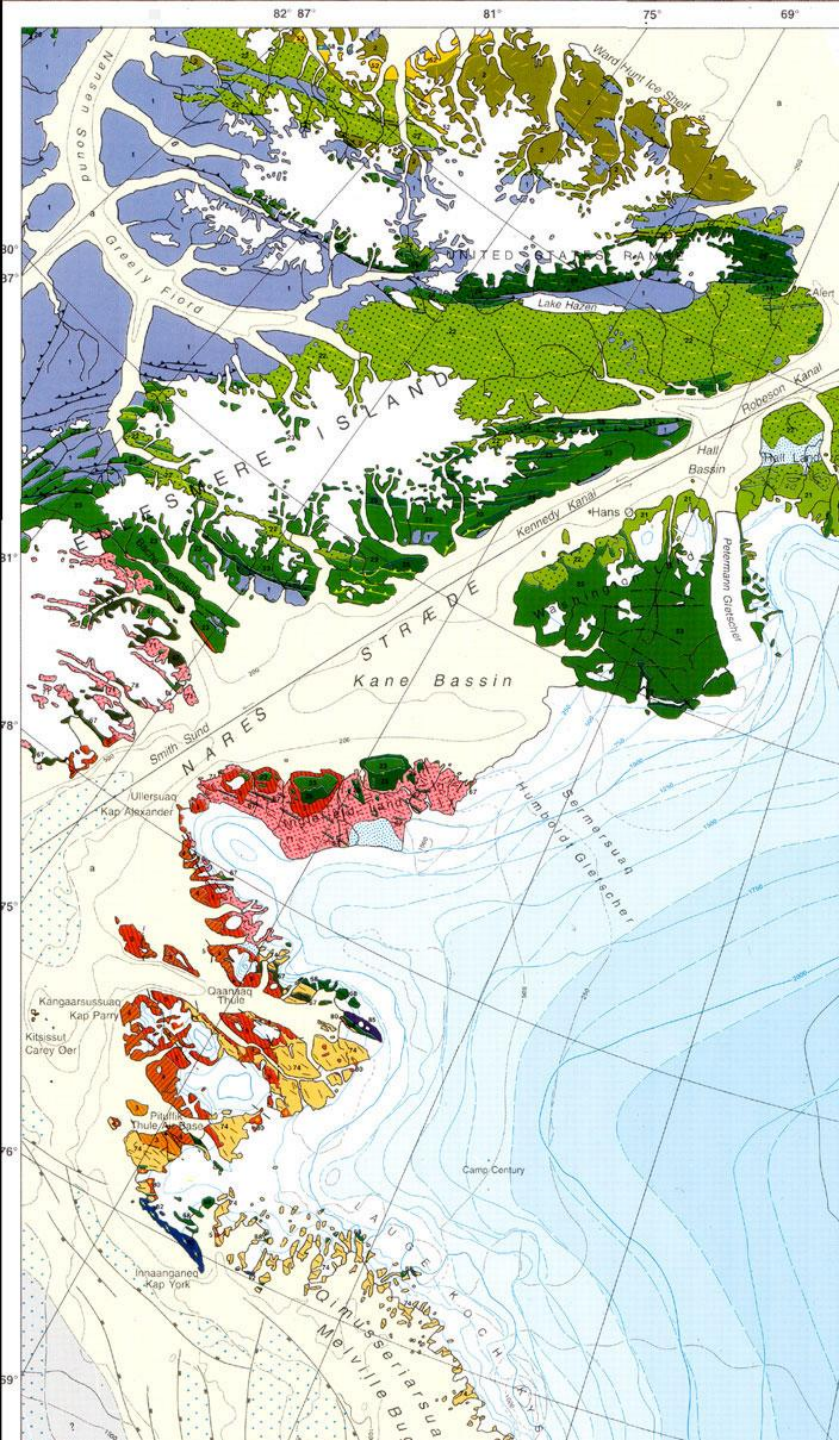
Kap Morris Jesup the Worlds northernmost land area – 740 km from the N-pole
2670 km N-S

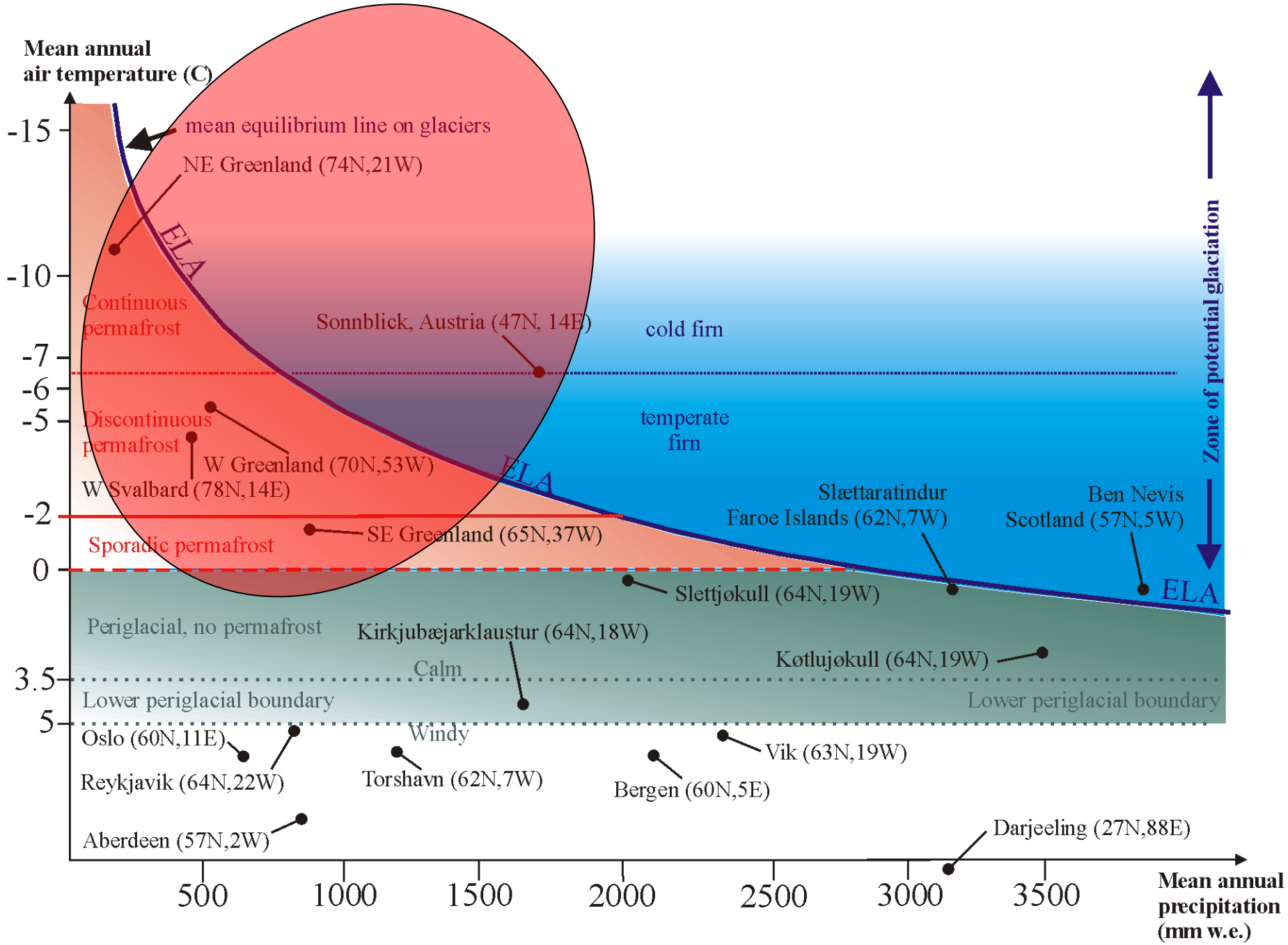
56.000 population



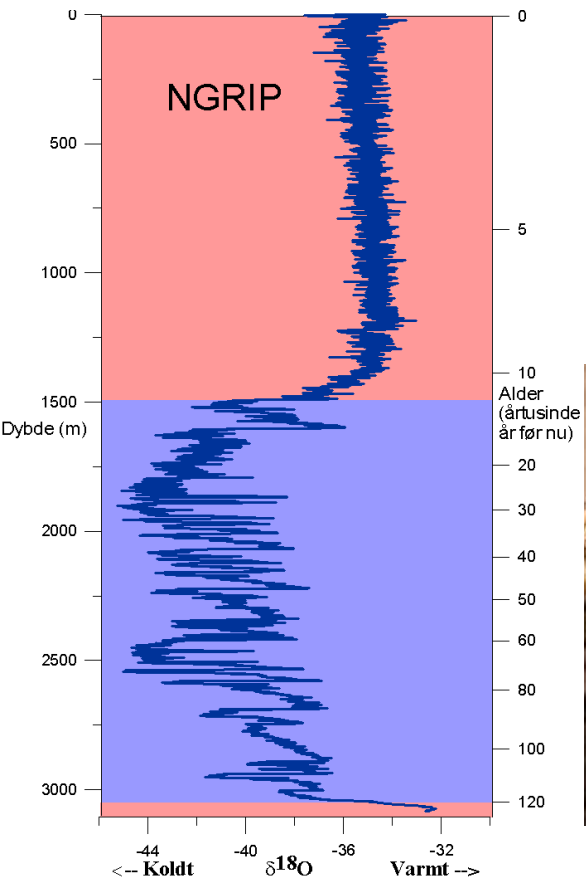
The geology of Greenland





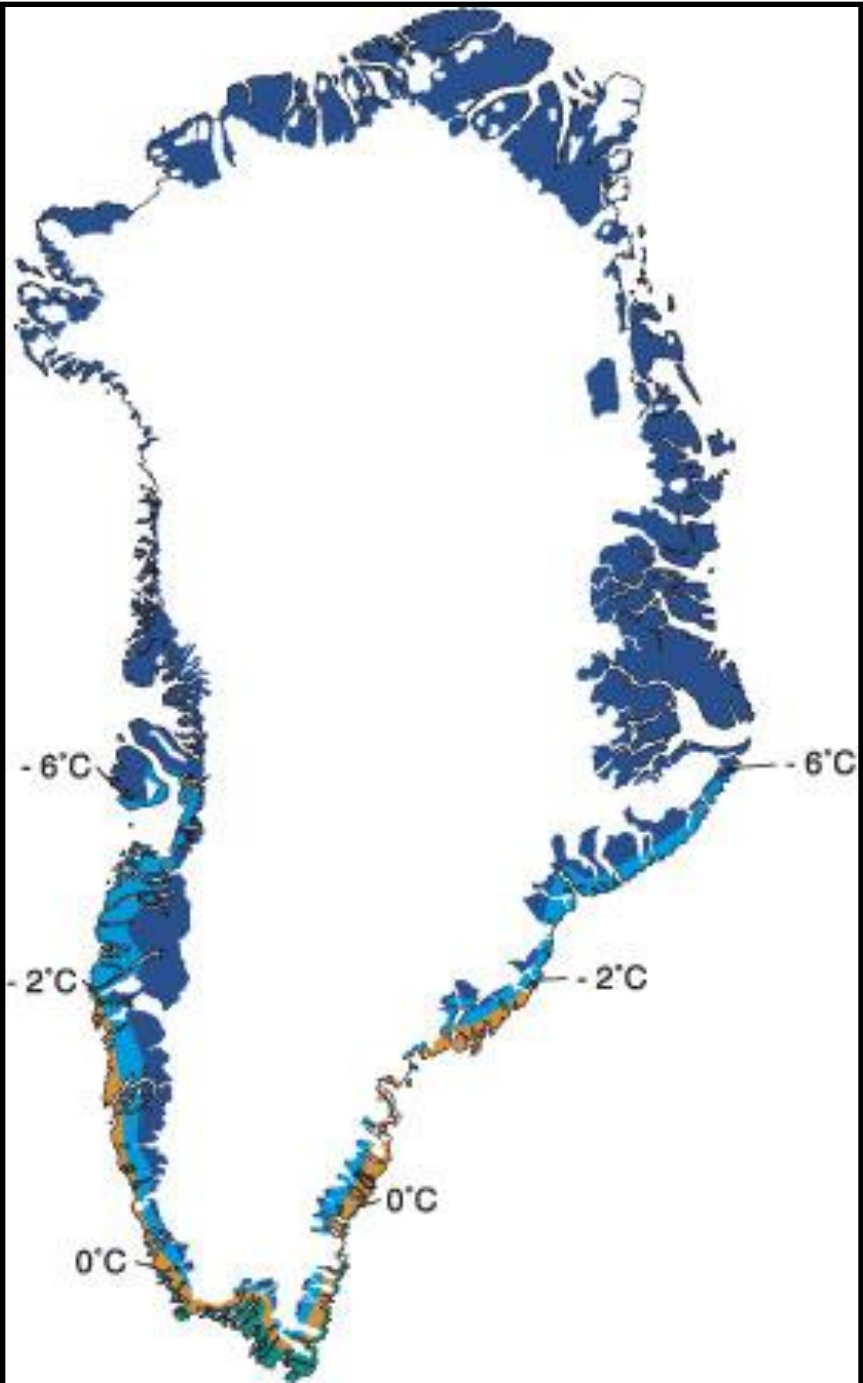


NEEM = North Greenland Eemian Ice Drilling



Professor Dorthe Dahl-Jensen with the last icecore drilled at a depth of 2537,36 m

Klima og permafrost



Nuuk

















○

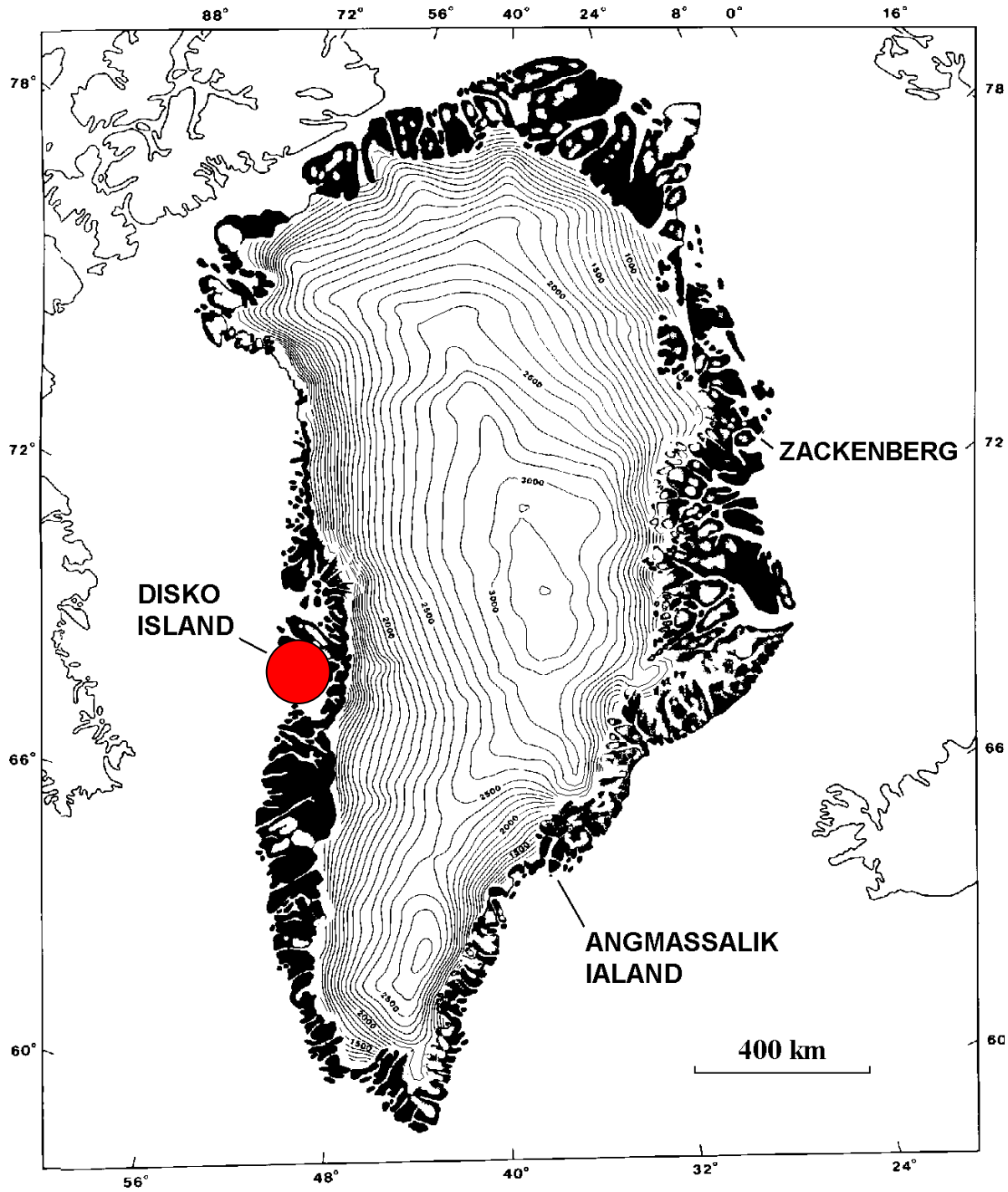
ON

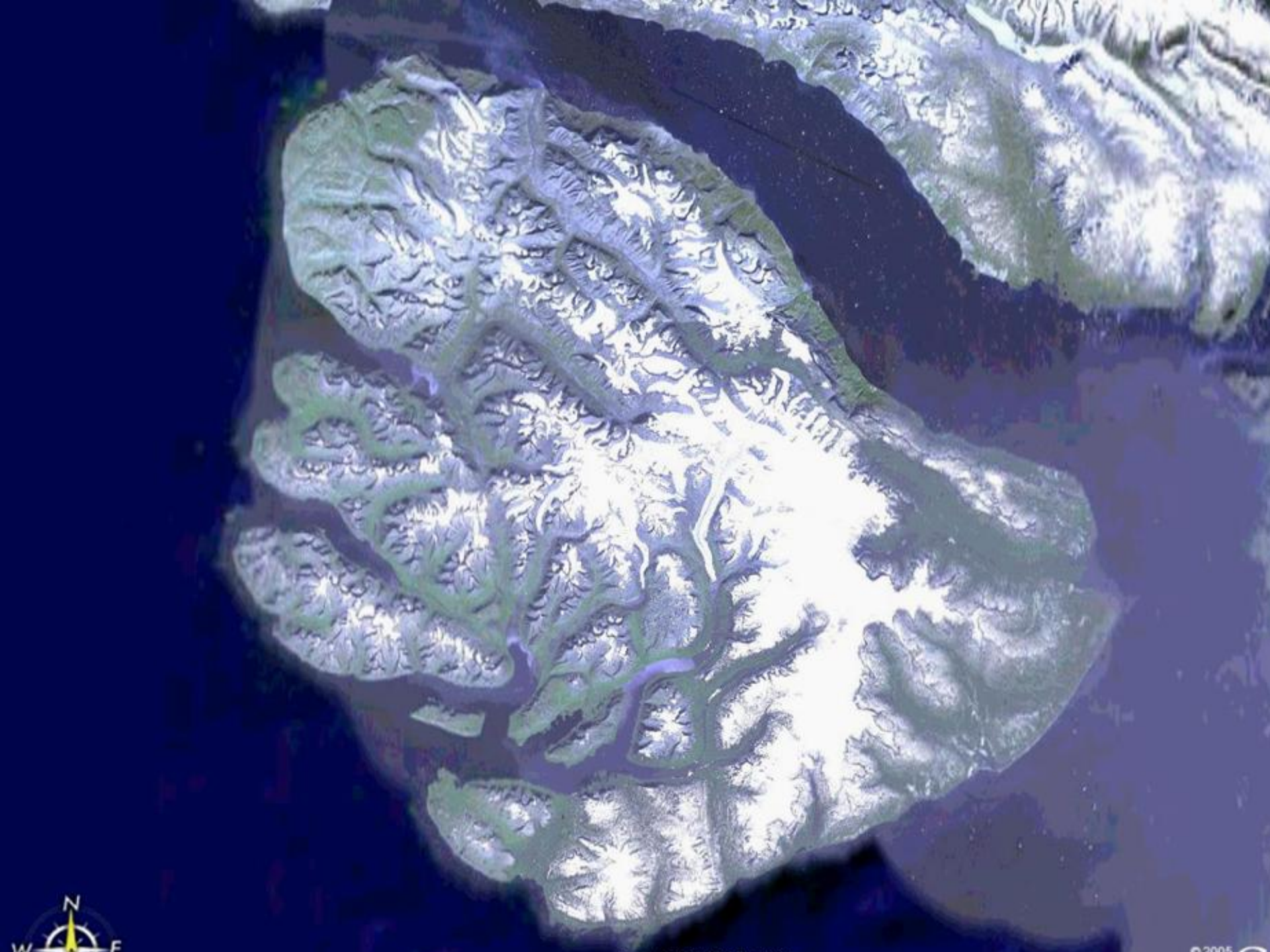
○

○

○



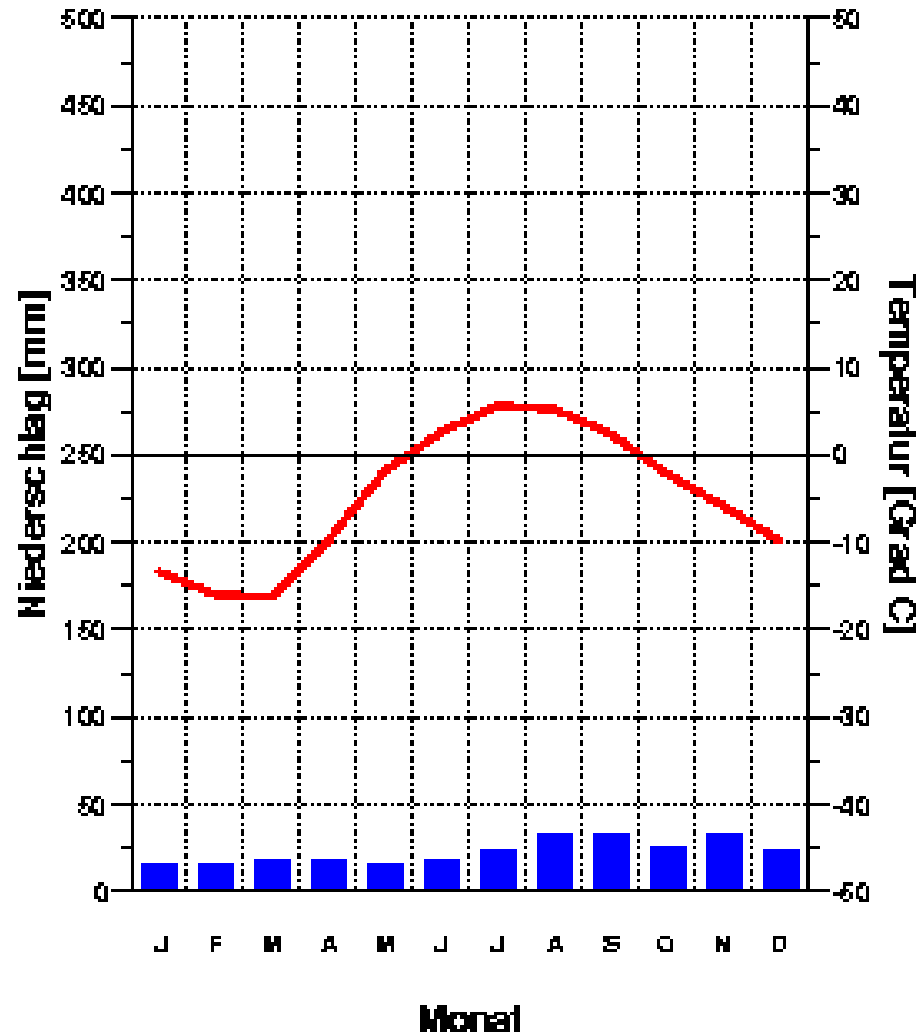


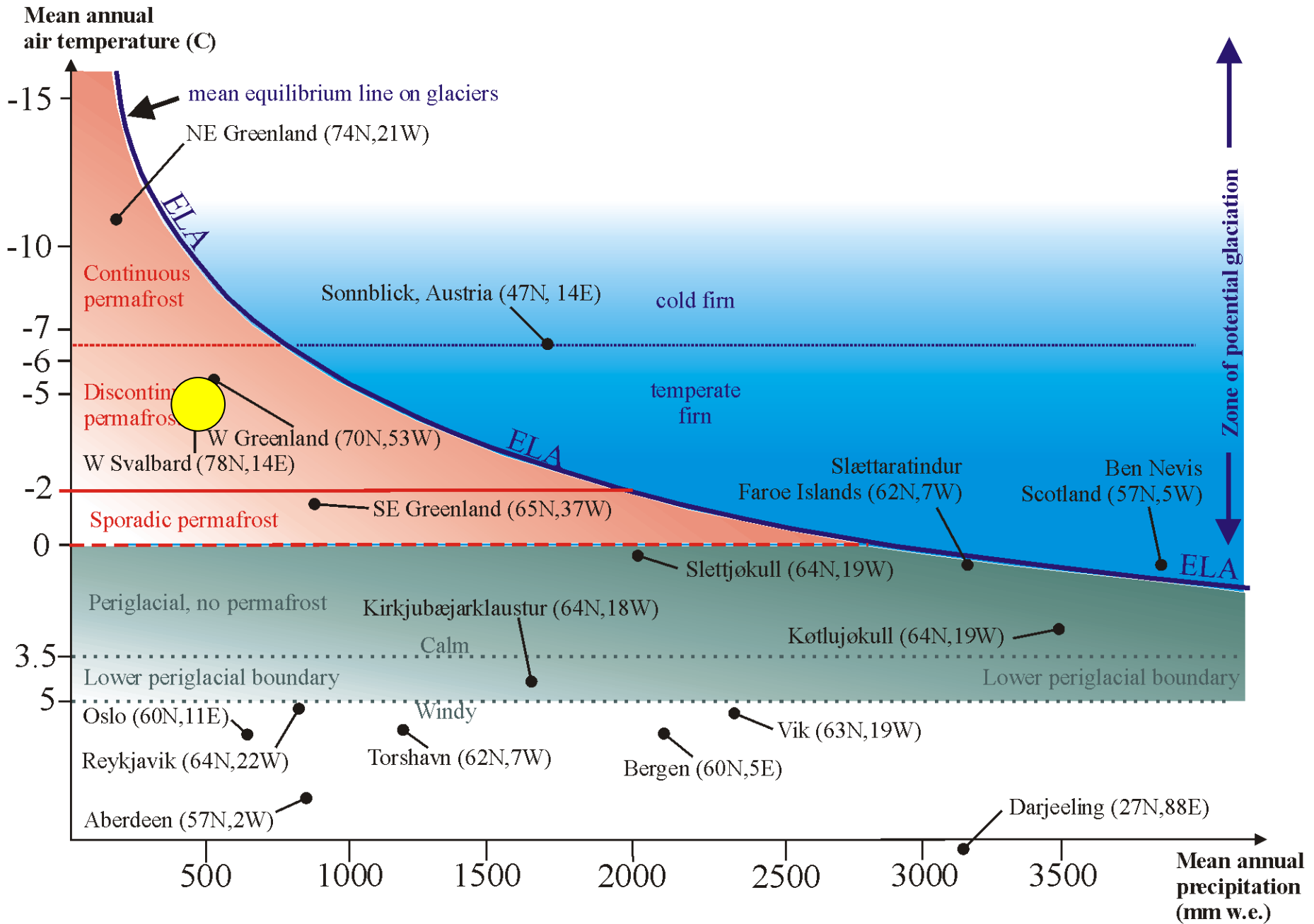


Egedisminde
47 m

-4.9 Grad C
274 mm

ET













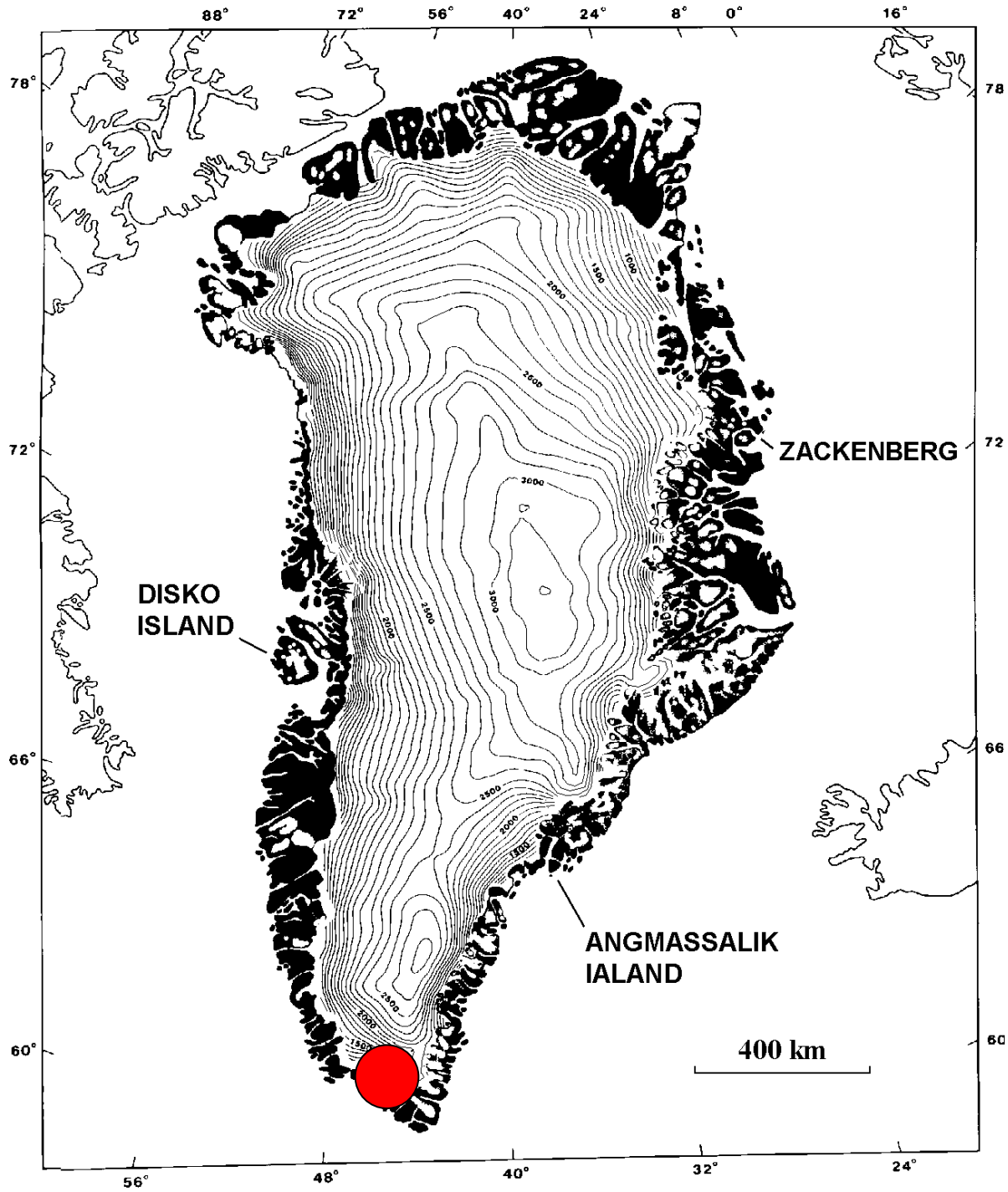


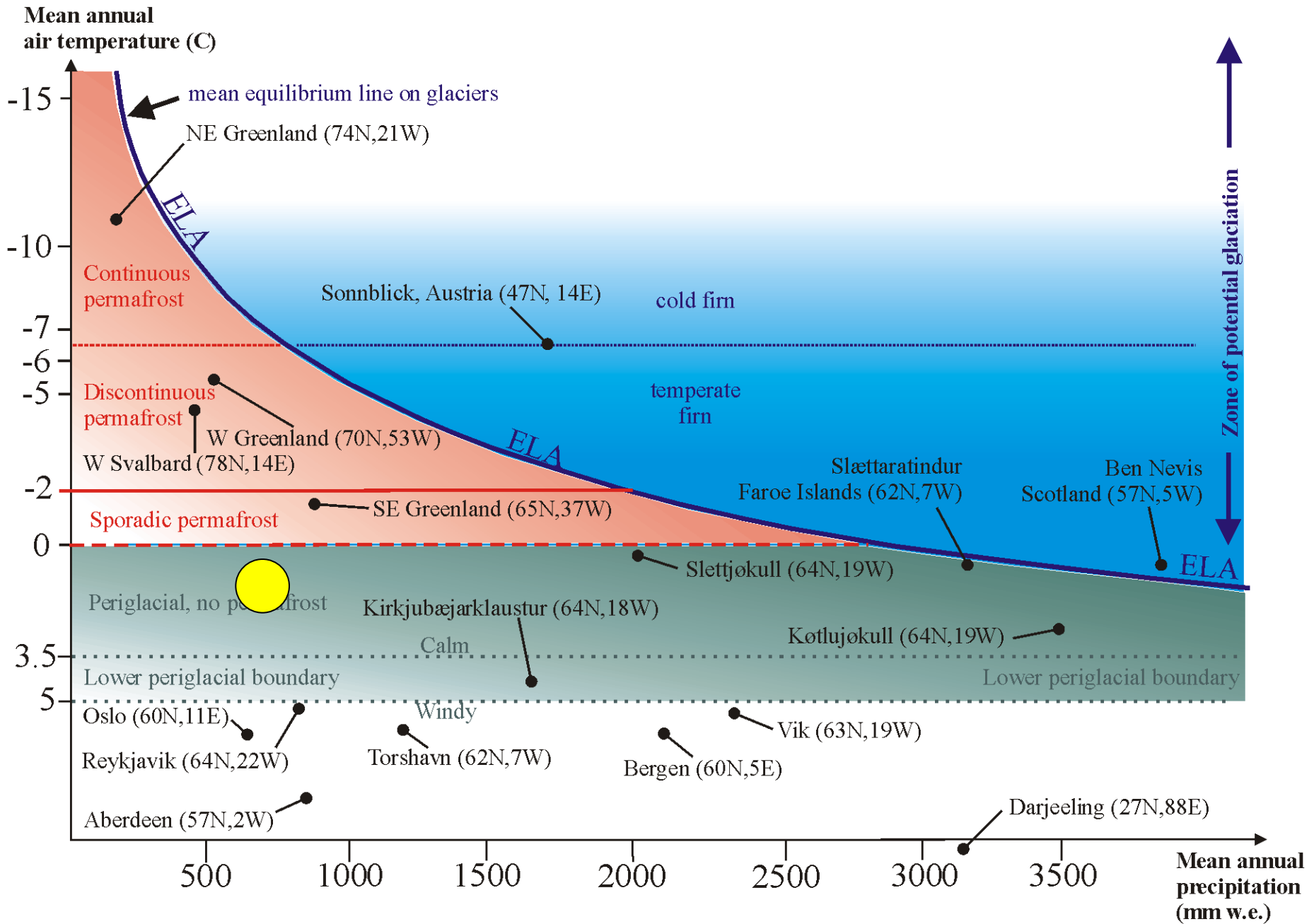




Pingos



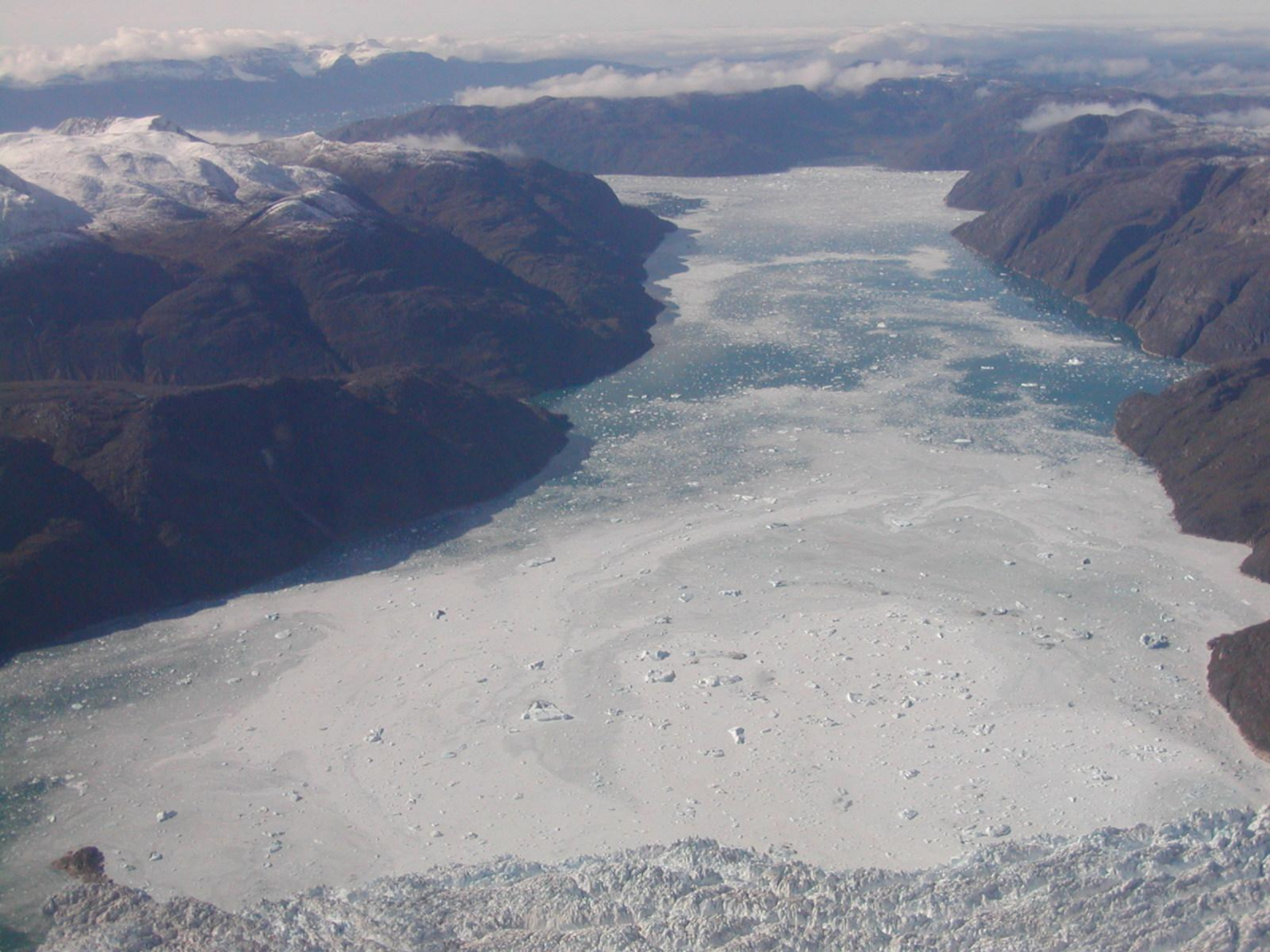




Brattalid









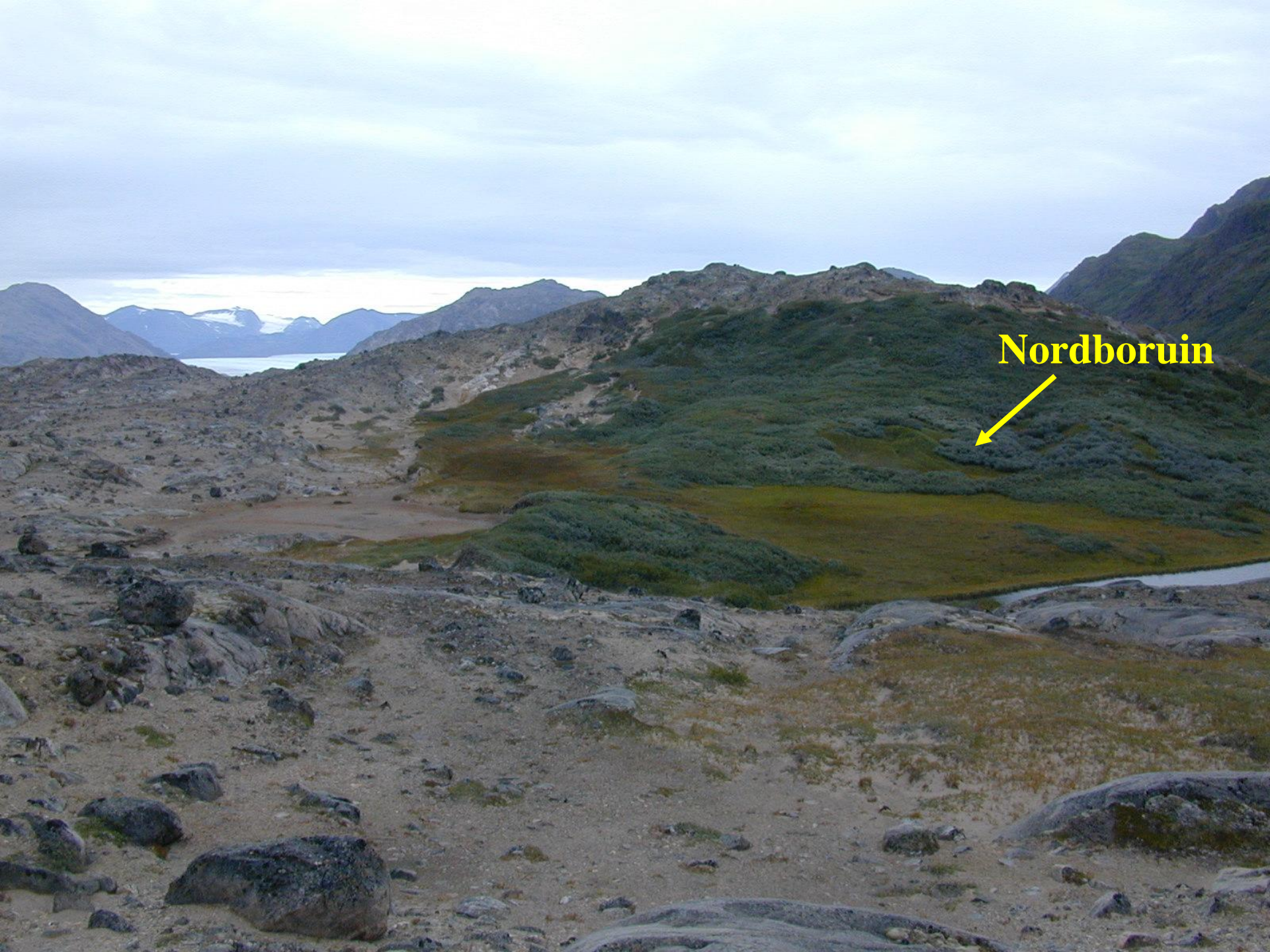












Nordboruin

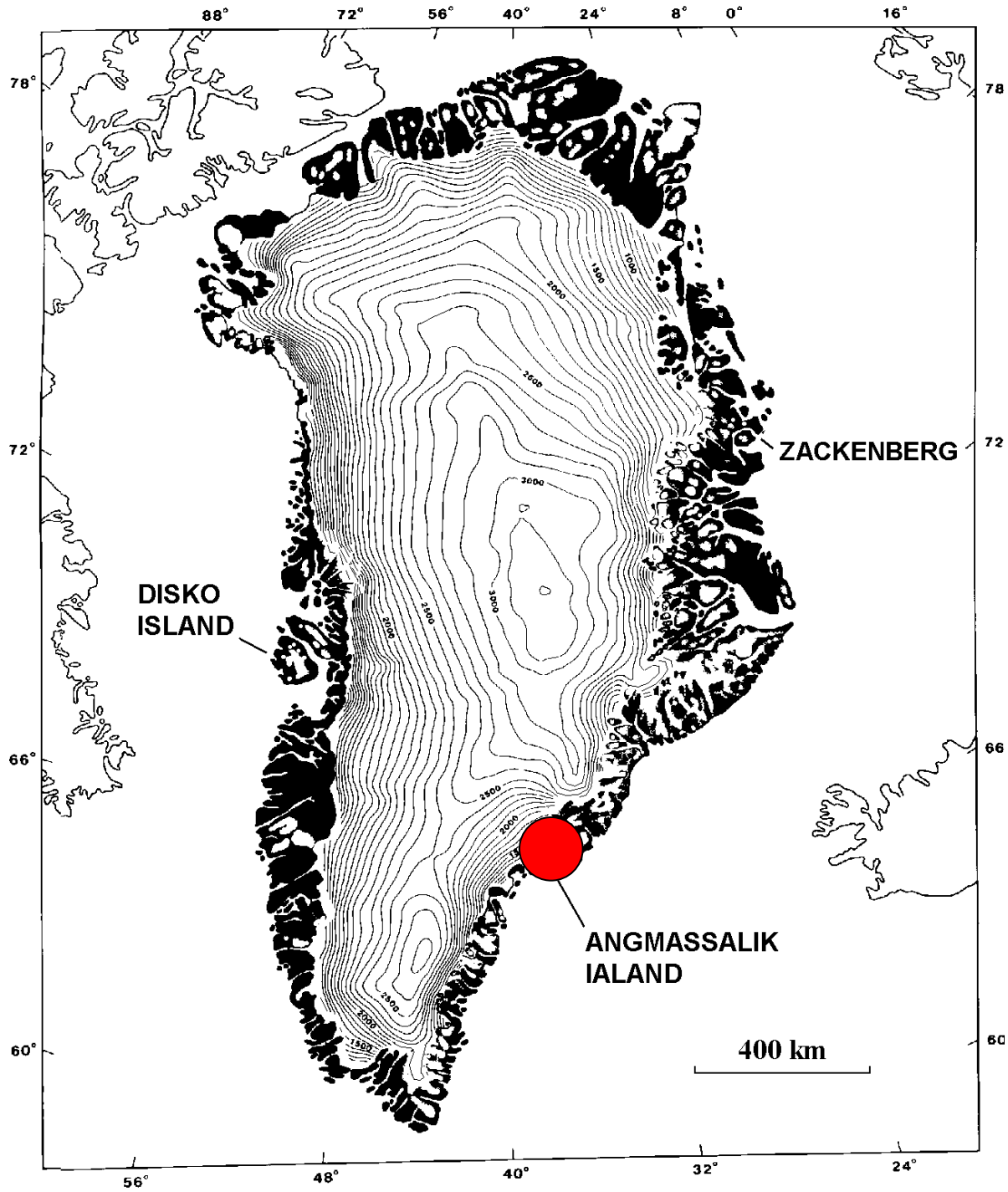




960 +/- 80 år = AD 962-1122

8500 +/- 800 år = 9250-7650 år BP

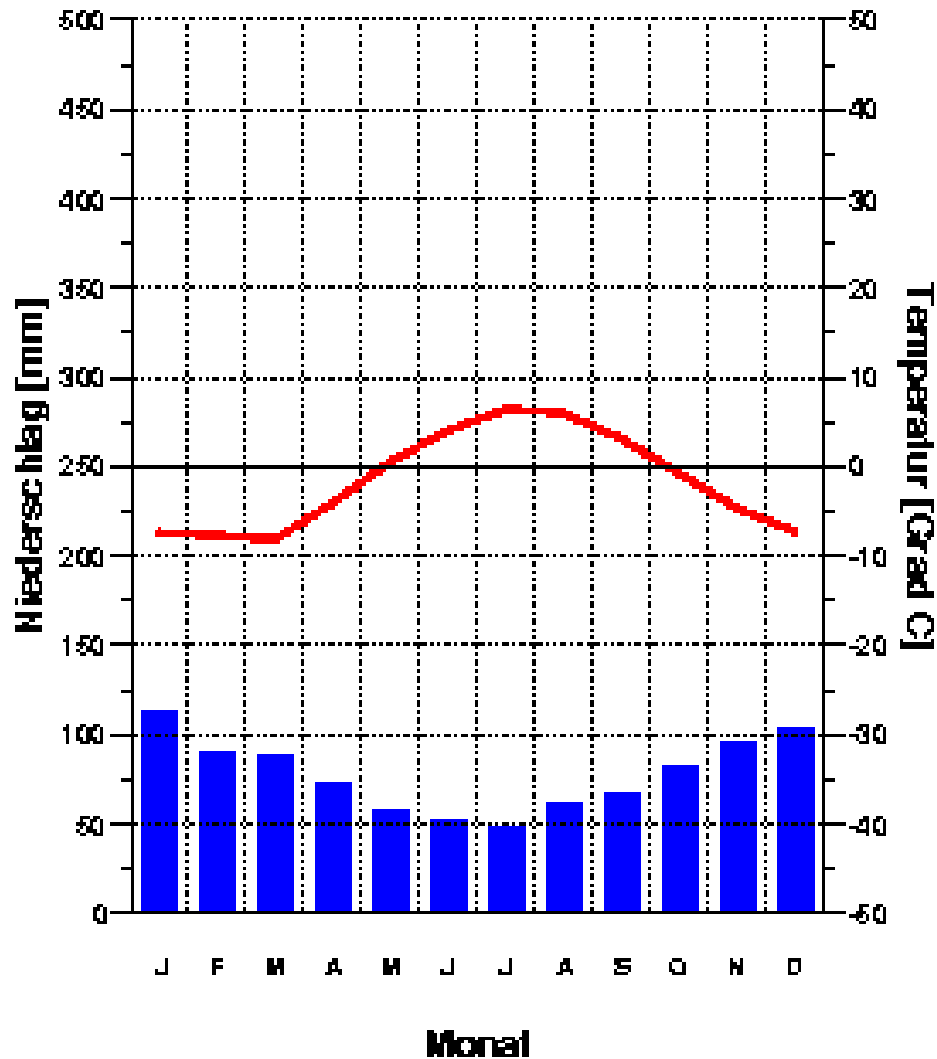


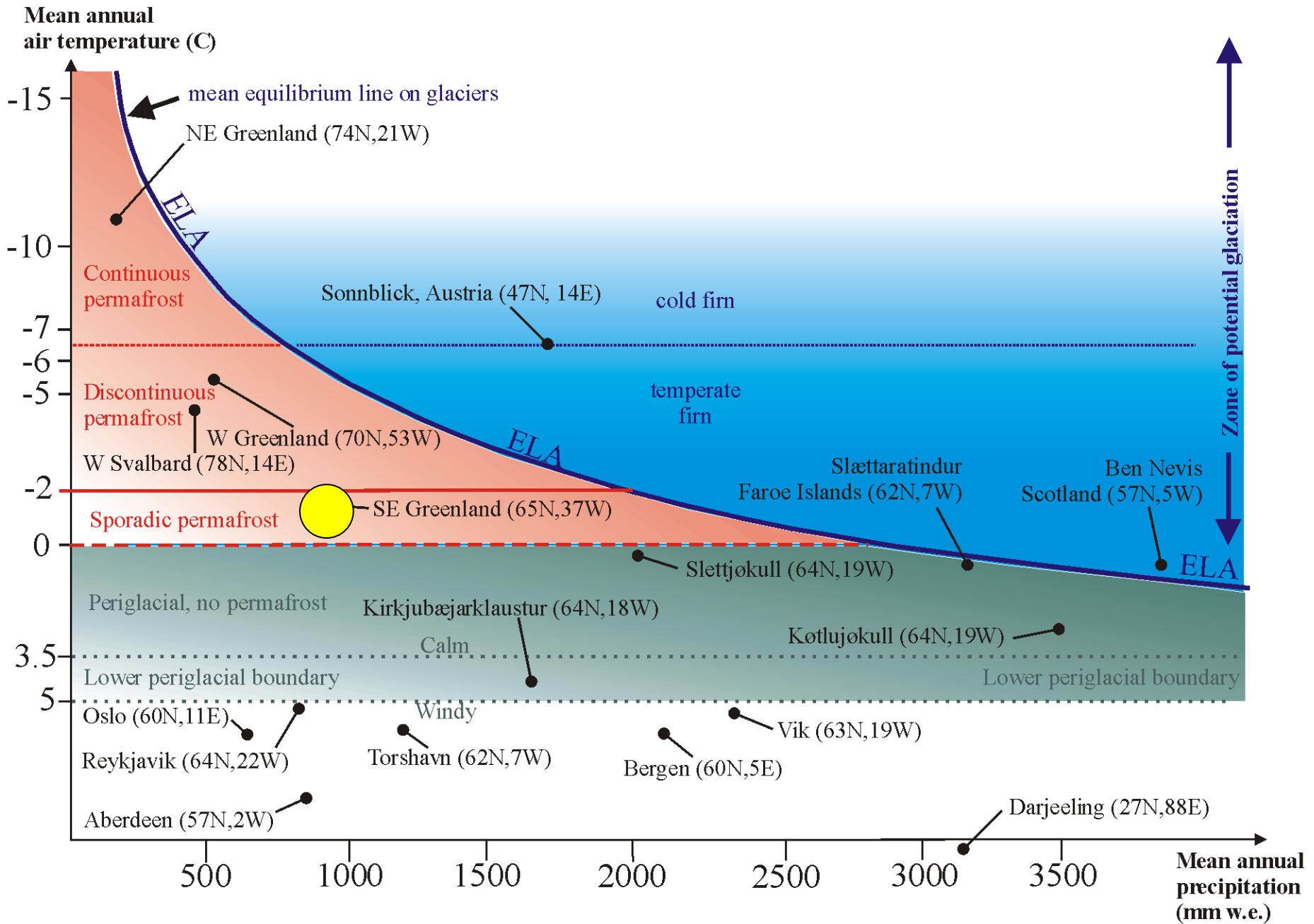


Angmagssalik
52 m

-1.7 Grad C
932 mm

ET











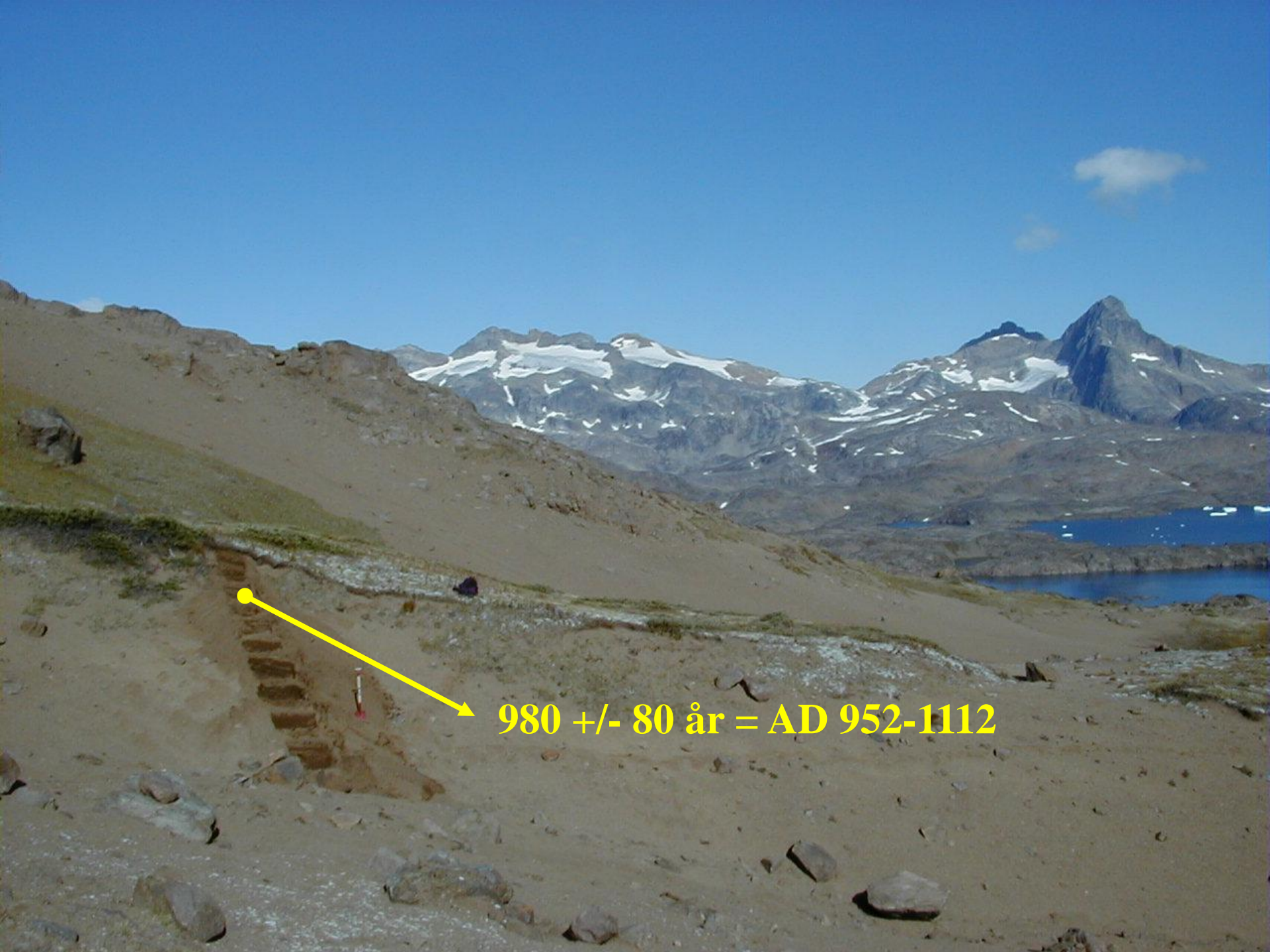




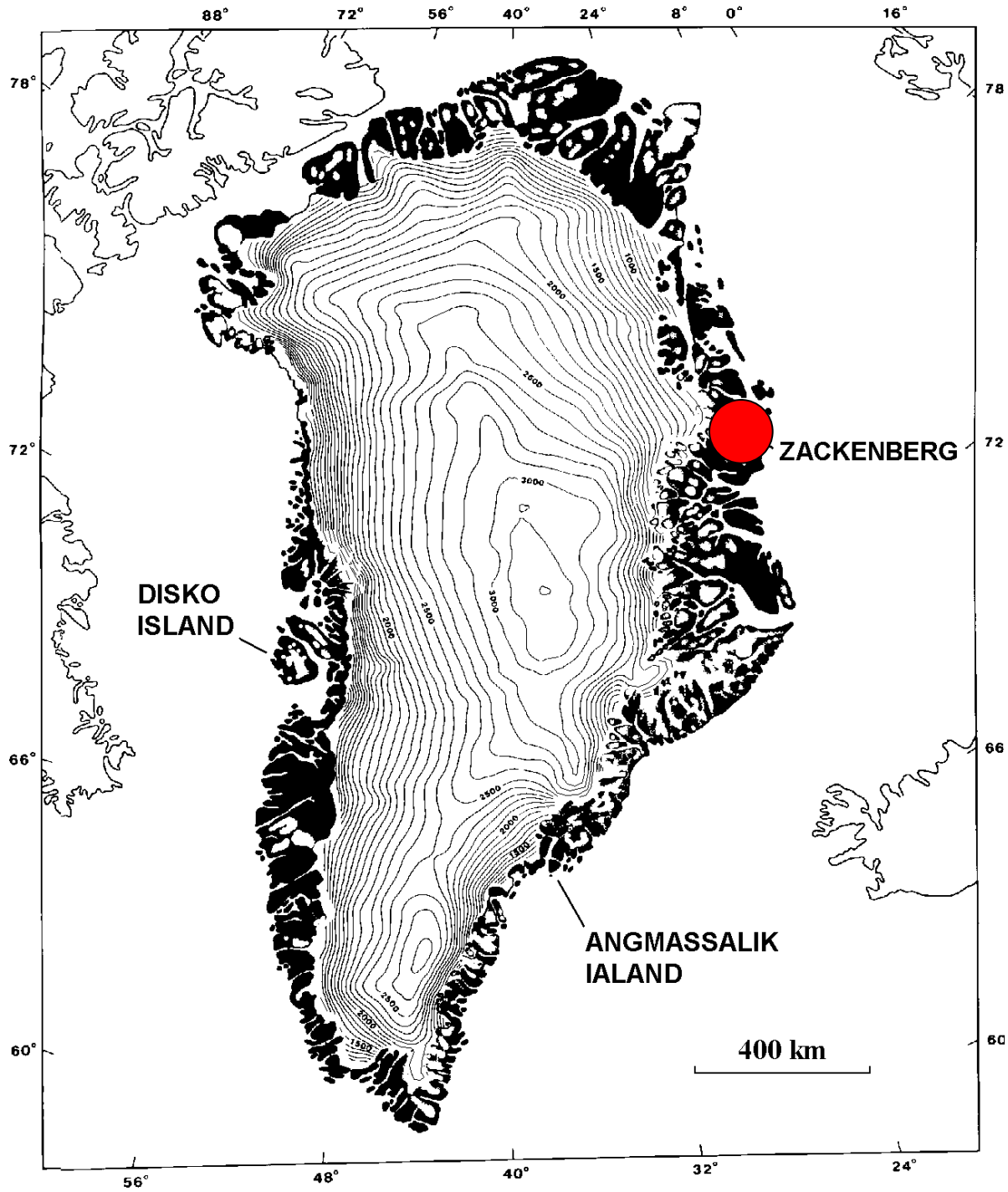






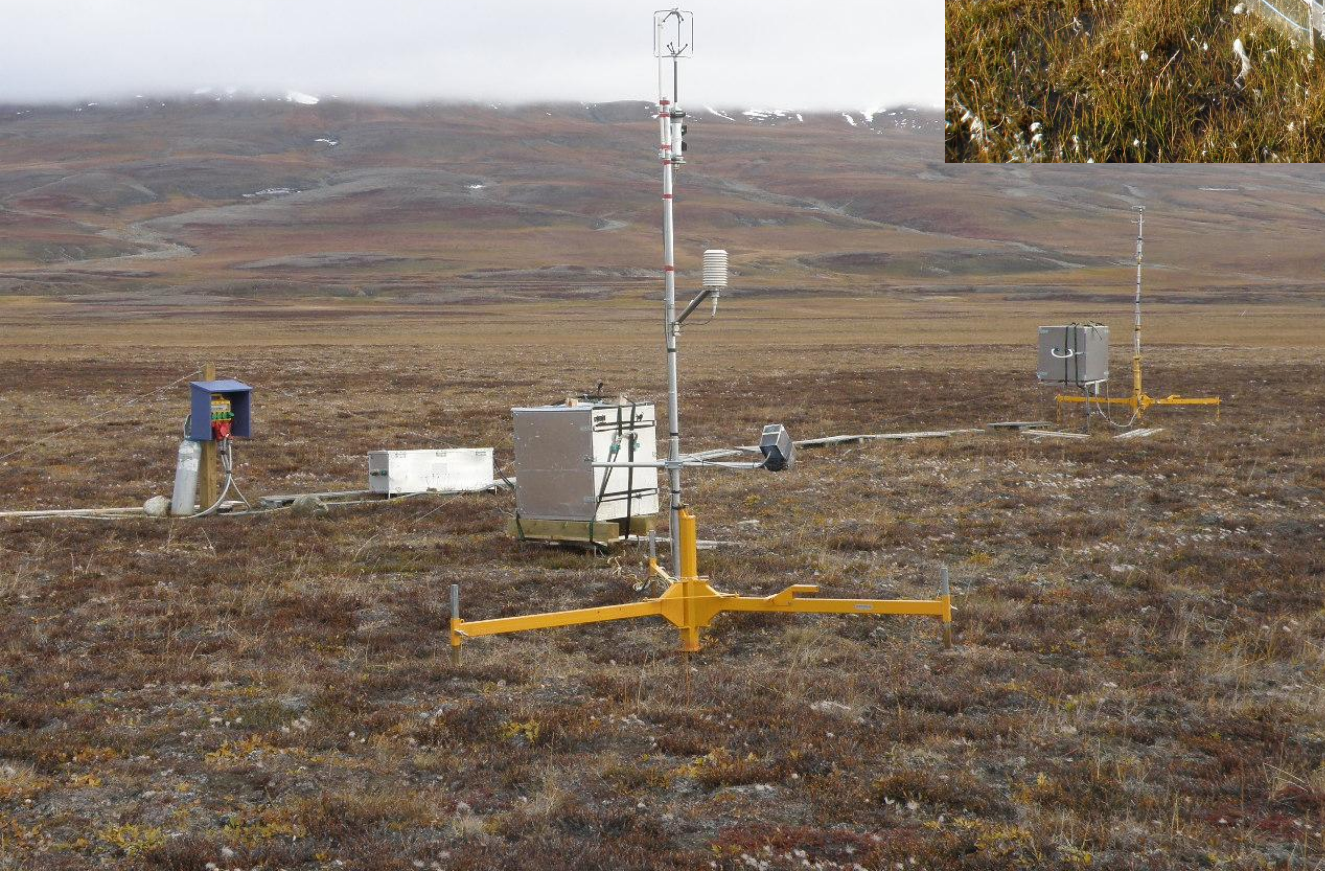


980 +/- 80 år = AD 952-1112



Zackenbergr Research Station Zackenberg Ecological Research Operation, ZERO





Greenhouse Gas
monitoring







High Arctic Nivation Process-Form-Sediment Model

