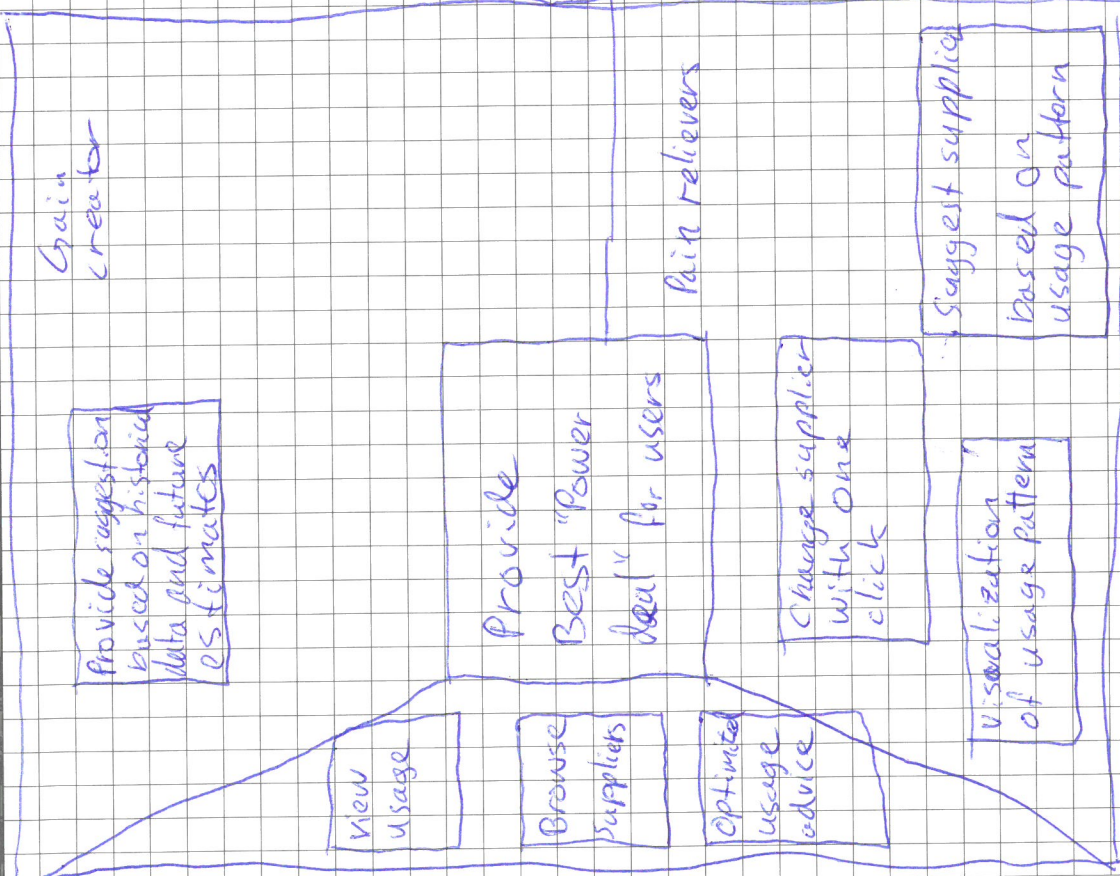
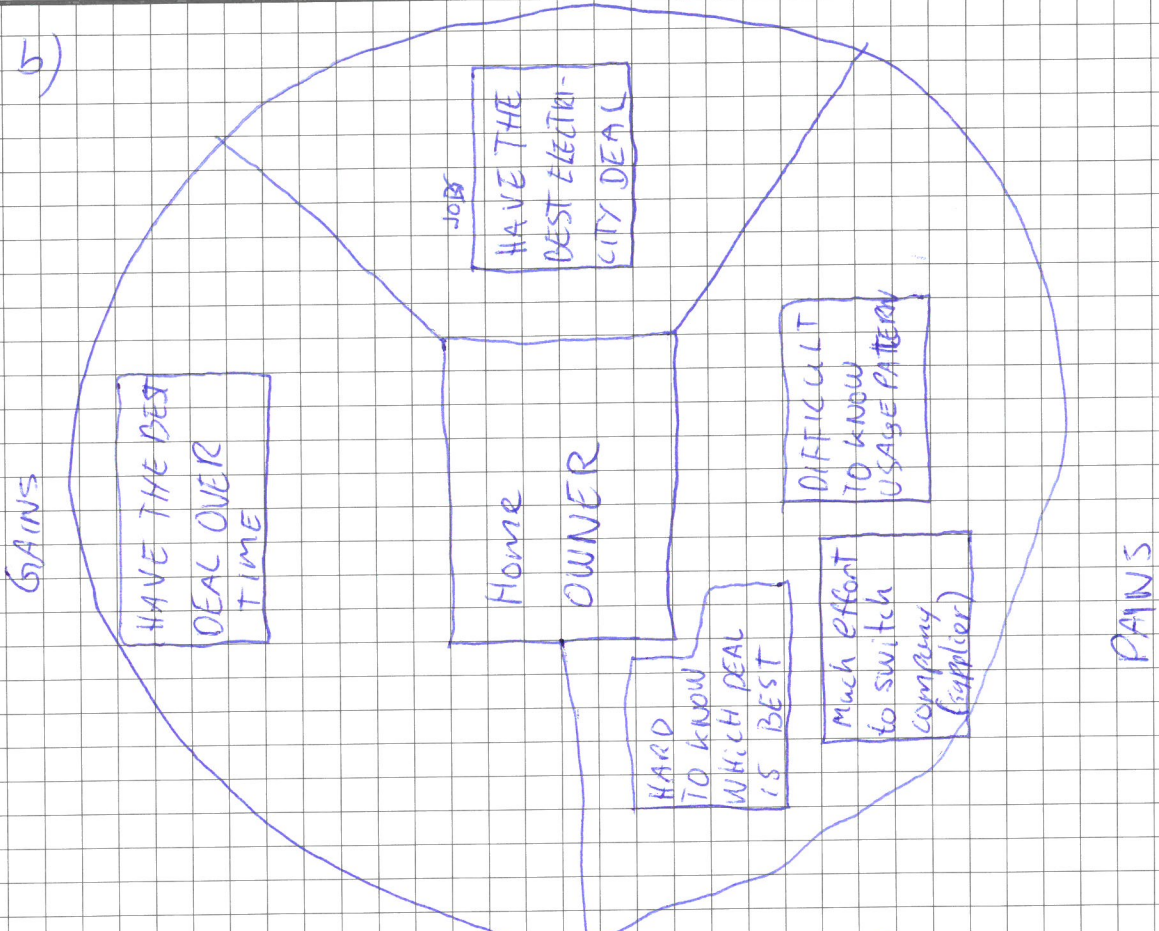




Skriv ikke her / Do not write here

1b)



Den grønne kopien beholdes av kandidaten./ The green copy is retained by the candidate.



Skriv ikke her /
Do not write here

1 <

1) I as a home owner needs functionality to see my usage history in order to be able to compare different deals

I as a home owner needs functionality to compare different deals to achieve the goal of having an optimized power deal.

I as a home owner needs functionality to see peak hours to achieve the goal of adapting my usage pattern to when it is cheapest.

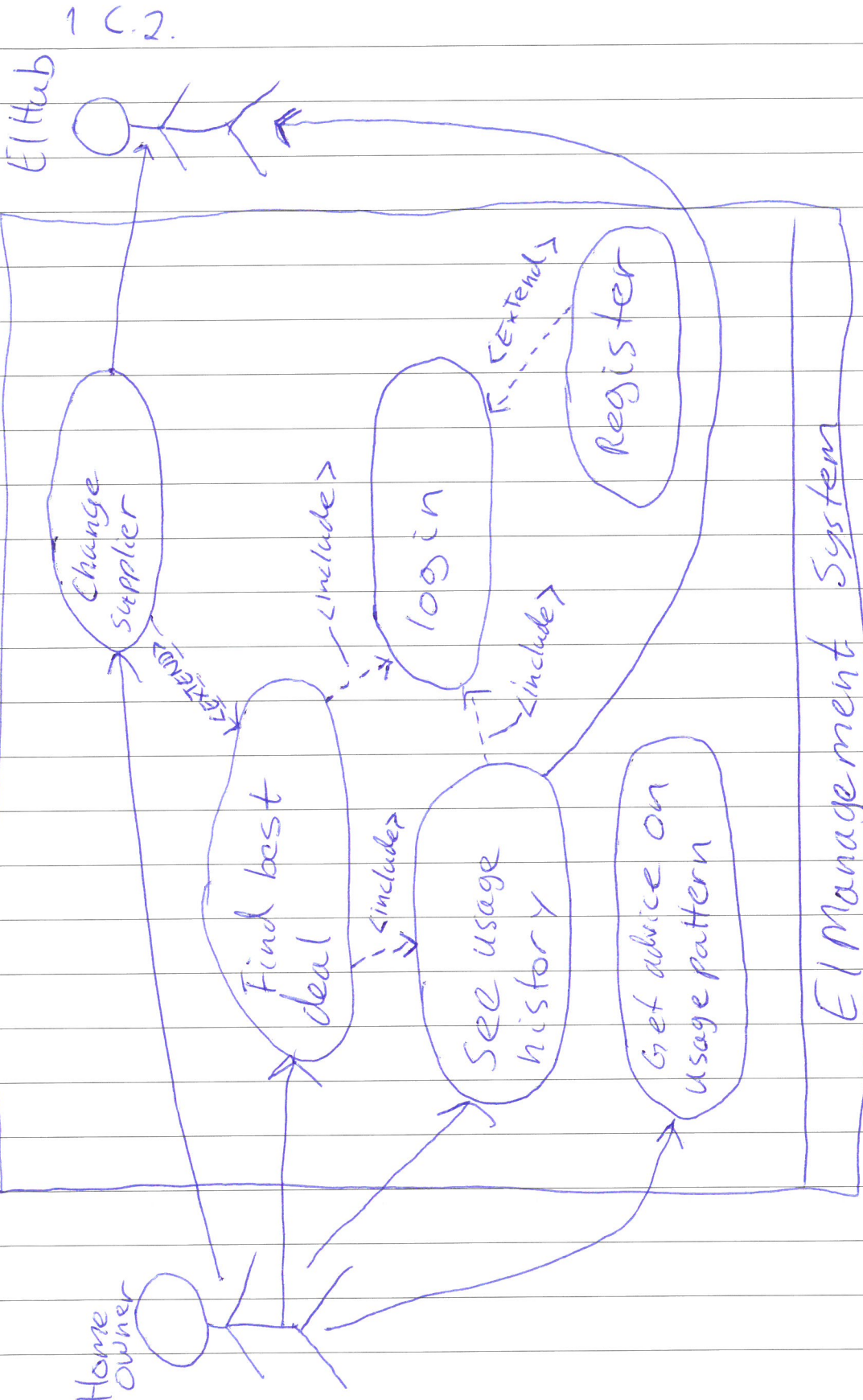
I as a real-estate mogul needs functionality to visualize usage from all my smart meters

^{aggregated}

to achieve the goal of better power strategies for my company



Skriv ikke her / Do not write here





Skriv ikke her / Do not write here

1.C.3

Use case name:

Find best deal

Use case id:

UC01

Revision:

1

Use case diagram:

previous Page

Status:

planned

priority:

Must have

Goal :

User gets a better deal if best deal is not yet active

Summary:

User opens app, login, choose the "find best deal" functionality.

User is provided a list of suppliers with hourly prices for kilowatt. The list is sorted from cheapest to most expensive based on home owners usage history.

User can click on any provider to change to their services with one-click.

preconditions: The user has downloaded and installed the EManagement app on his/hers phone

Main success scenario:

1. User opens the app

2. User log in (UC03)

3. User click the "find best deal" button

4. System show a list of the best deals available.



Skriv ikke her /
Do not write here

1.2.3 continued

Alternative paths: 2.a User doesn't have an account
directed to register screen.

2.b User register an account

5. User click a provider

6. User electronically sign a
new deal with the clicked provider

Post conditions: list of best deals is displayed on
the screen

Non-functional

requirements:

- the system should respond within
1 second after user clicks

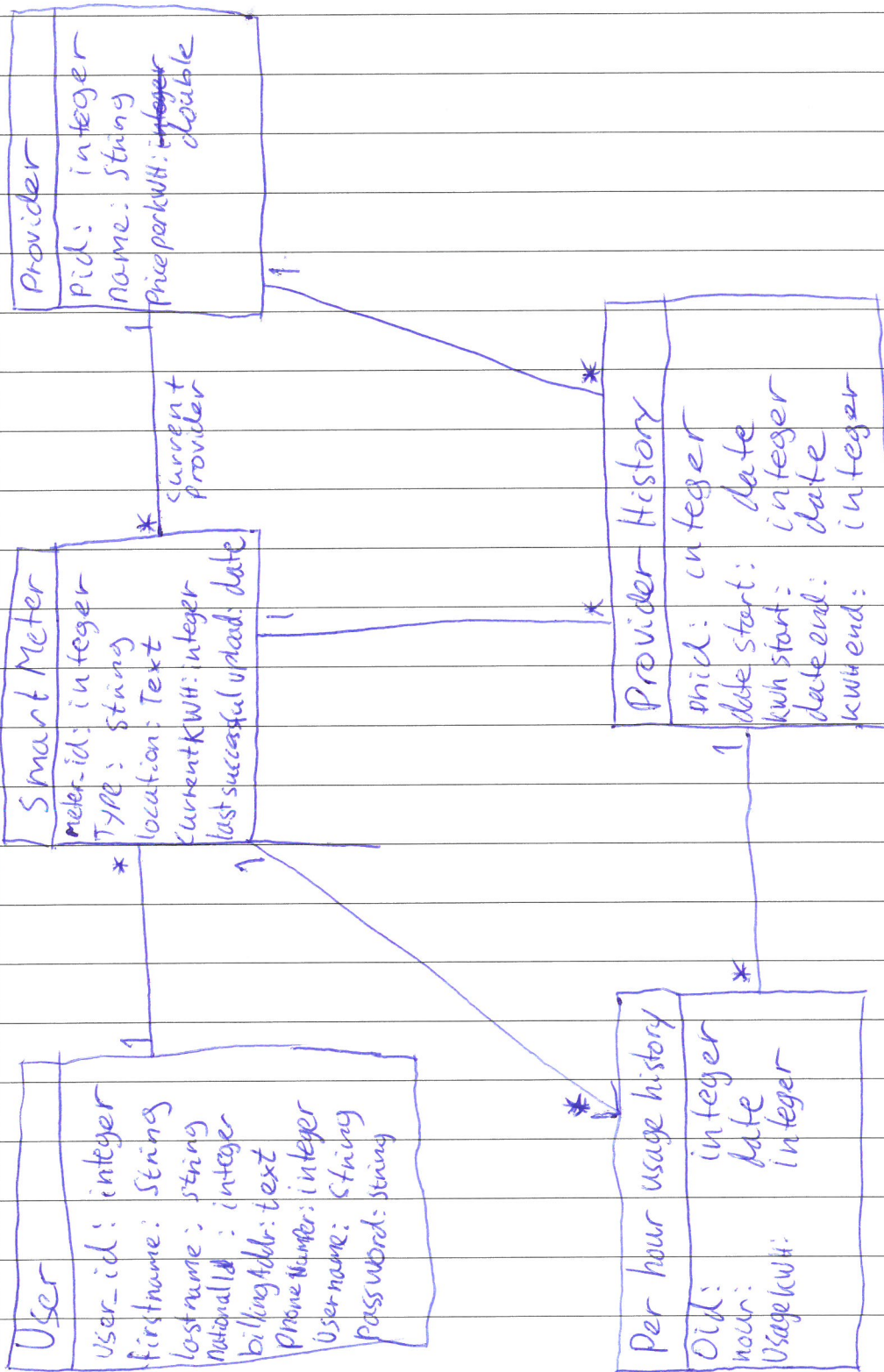
- the system should not crash if
internet is down

Author and date: agent 603, 6/6-16



Skriv ikke her / Do not write here

2a)



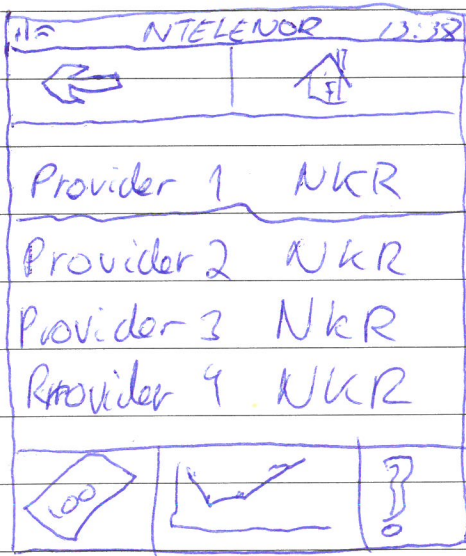
Den grønne kopien beholdes av kandidaten./ The green copy is retained by the candidate.

Skriv ikke her /
Do not write here

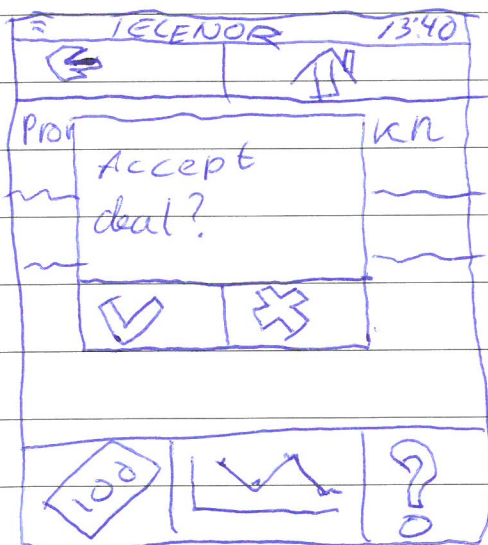
2 b



The screen after the user has logged in.



This is the "best deals" screen. User clicked the "money" mehubar item.

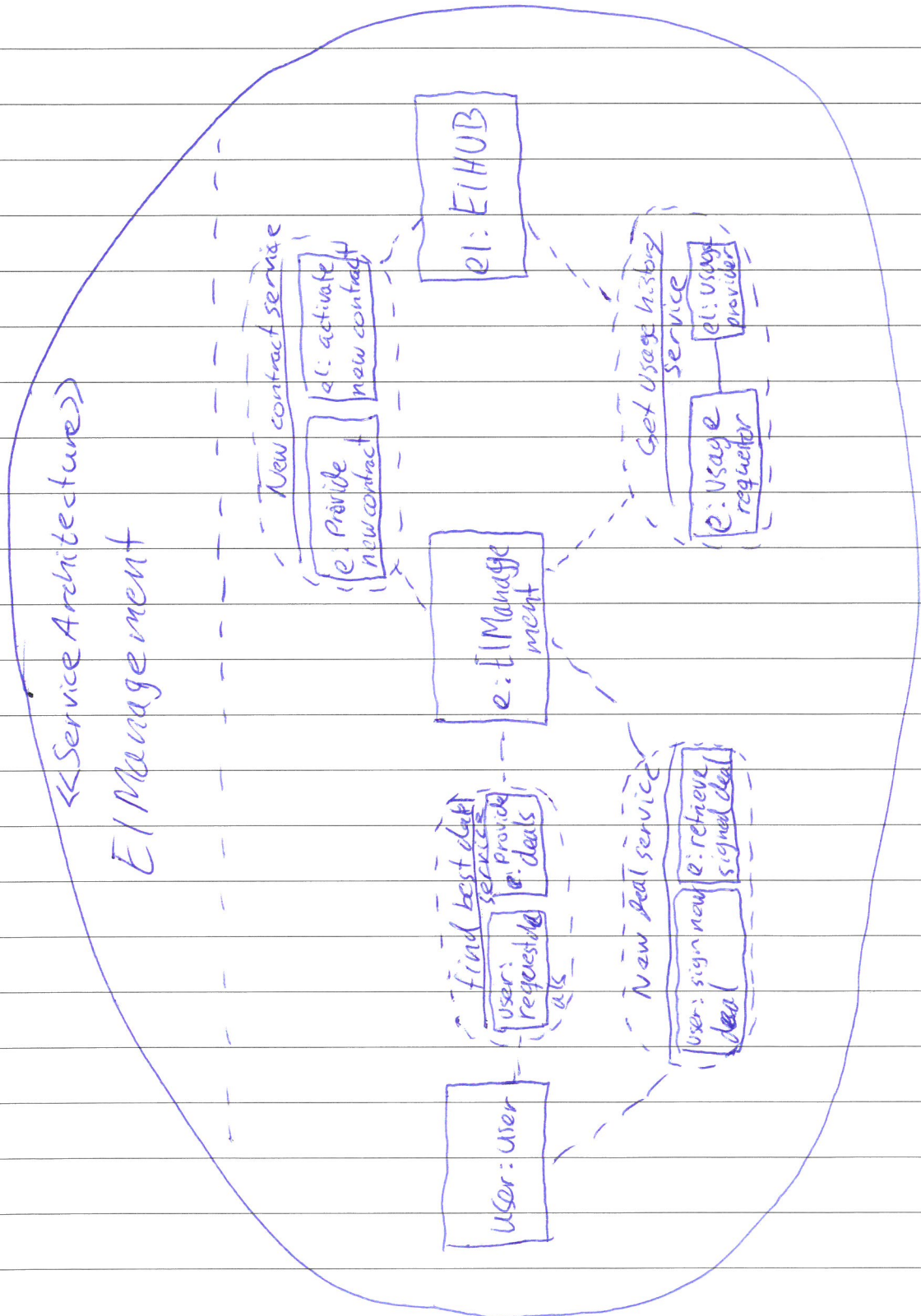


If user click on one of the deals, he/she can sign a new deal by accepting the deal.



Skriv ikke her / Do not write here

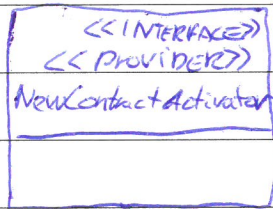
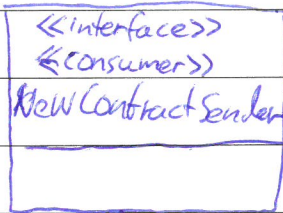
20



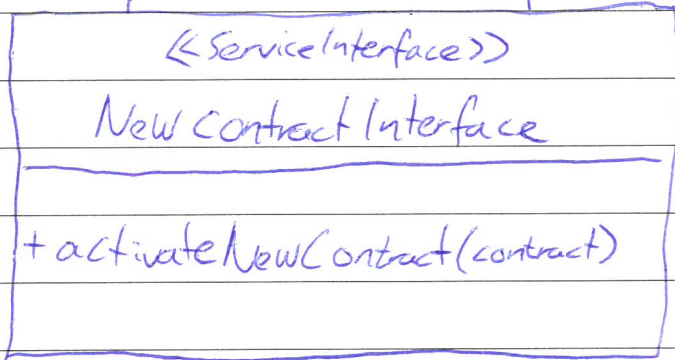


Skriv ikke her /
Do not write here

2C. continued



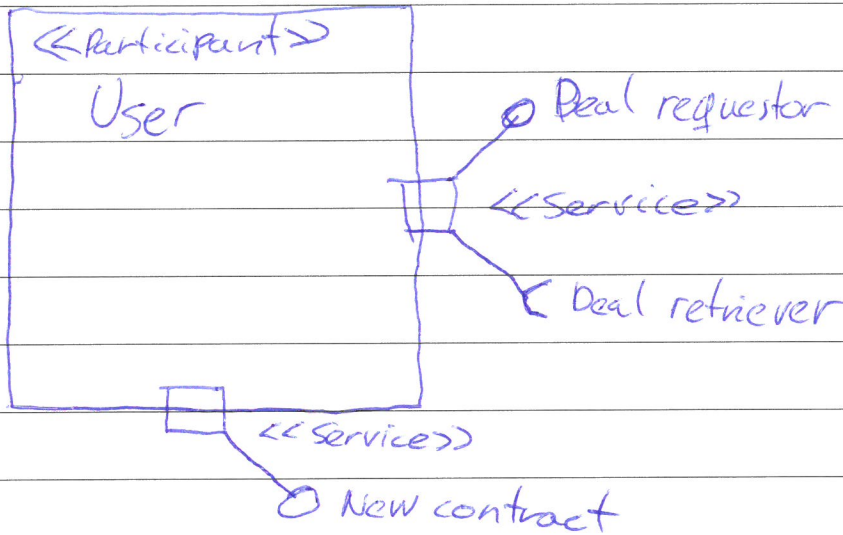
Repeat the following pattern for all interfaces





Skriv ikke her / Do not write here

2C continued

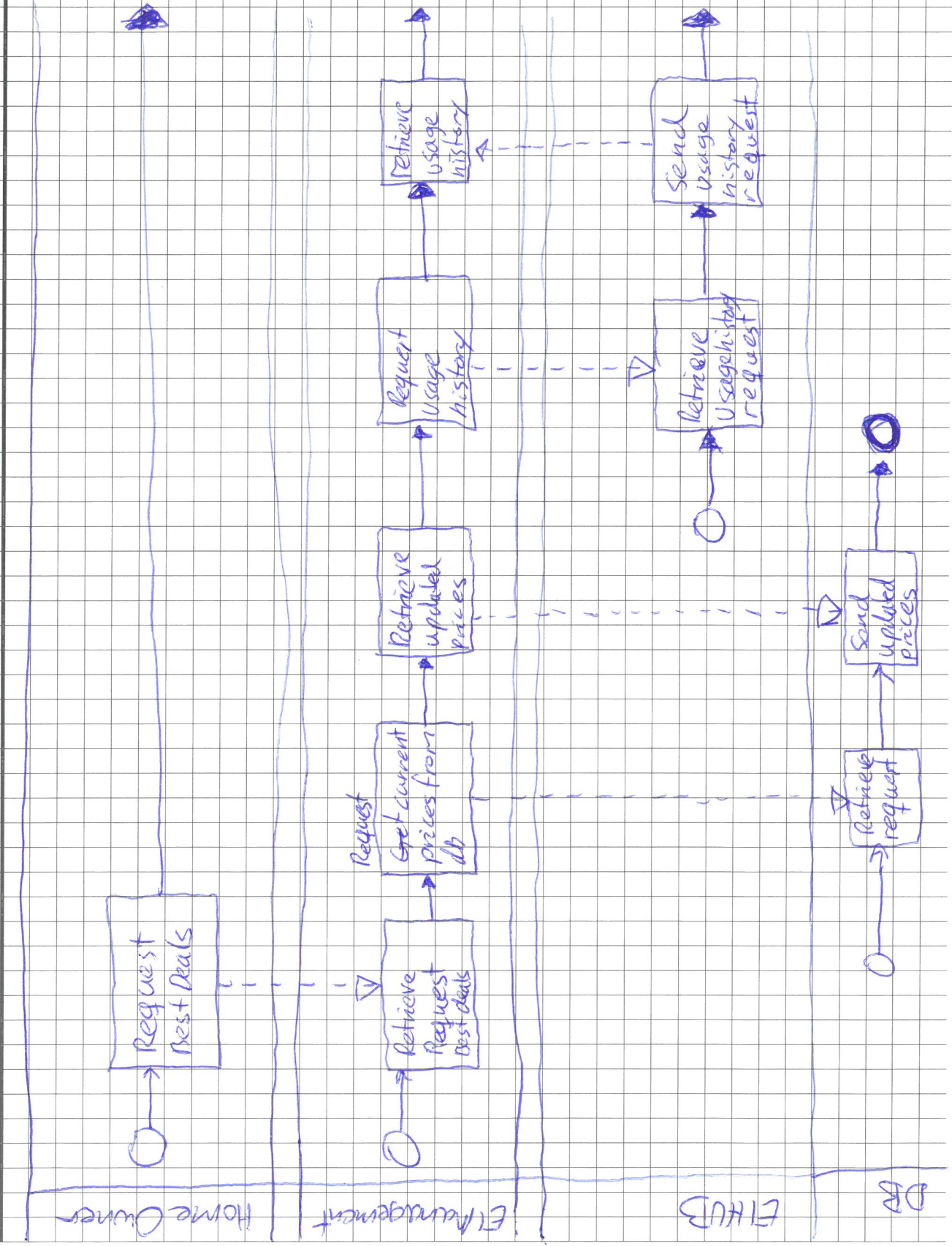


Summary: I've used a UML Collaboration with stereotype "Service Architecture" for the service architecture. I've used UML Collaboration with stereotype "Service Contract" for the Service contracts (note: I didn't have space to add the stereotype notation). I added one of the service interfaces with UML Class, "ServiceInterface" stereotype, and one of the participants with UML Class and UML Port.



Skriv ikke her / Do not write here

2d)

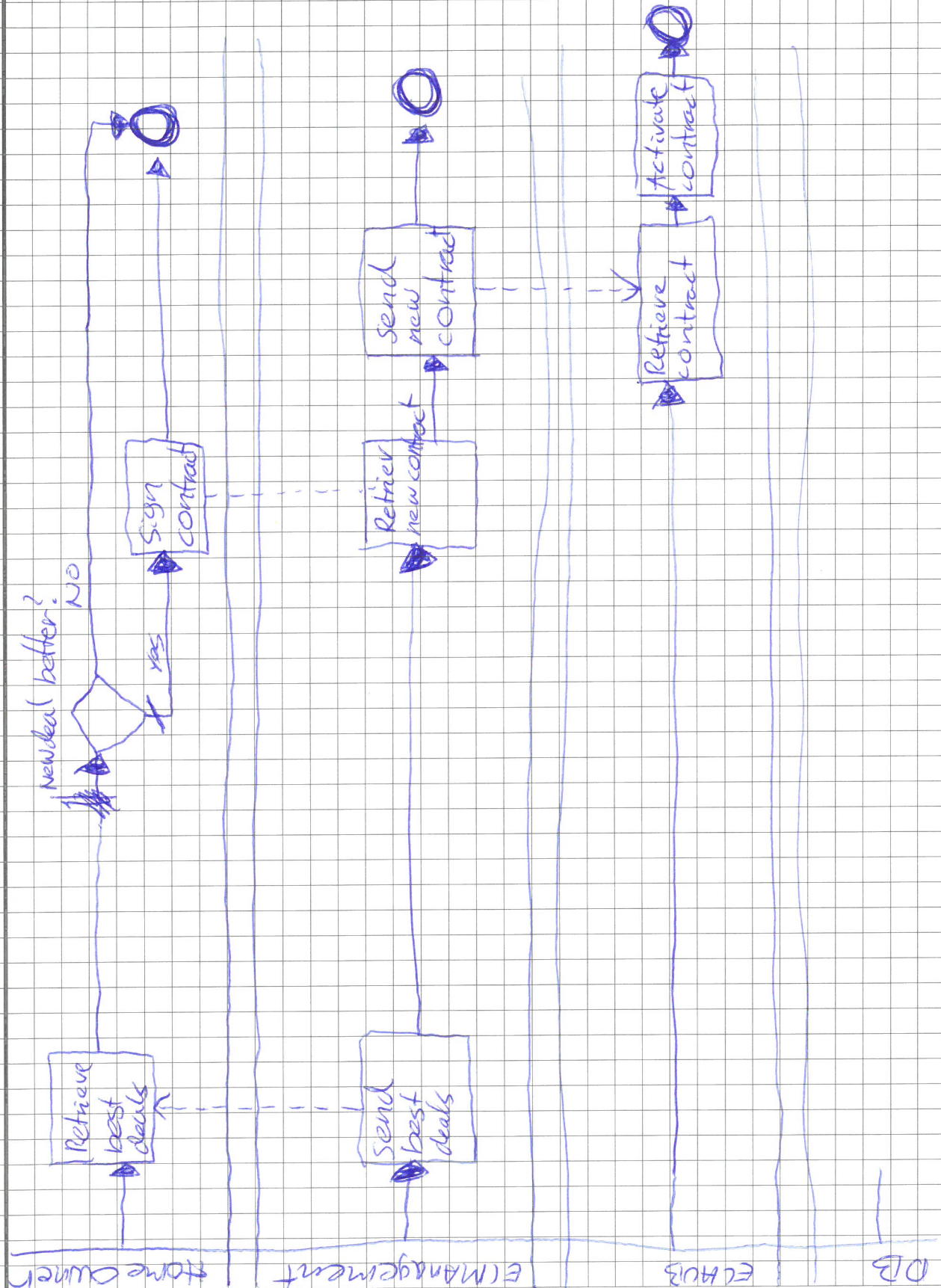


Den grønne kopien beholdes av kandidaten./ The green copy is retained by the candidate.



Skriv ikke her / Do not write here

2d continued

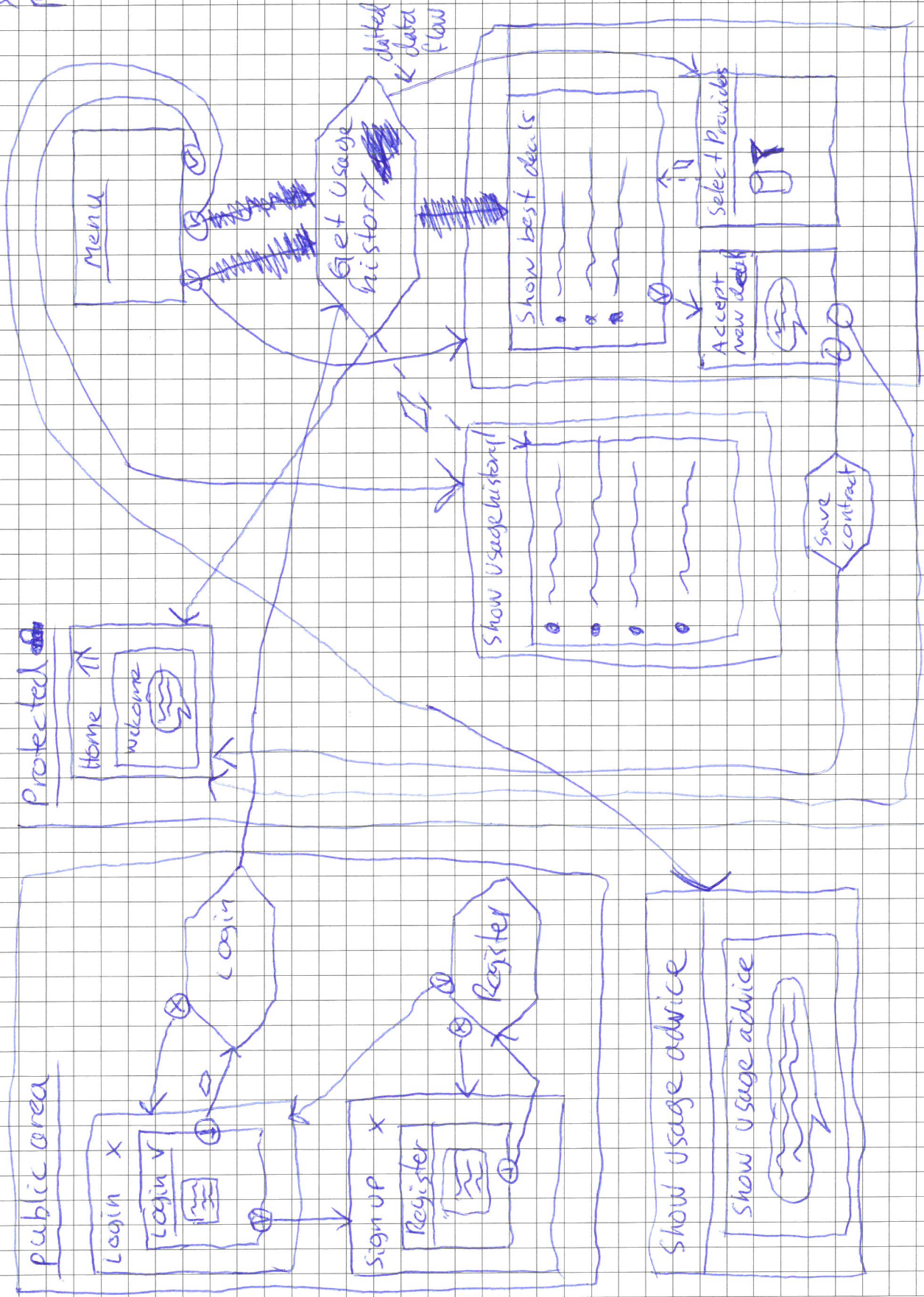


Den grønne kopien beholdes av kandidaten./ The green copy is retained by the candidate.



Skriv ikke her / Do not write here

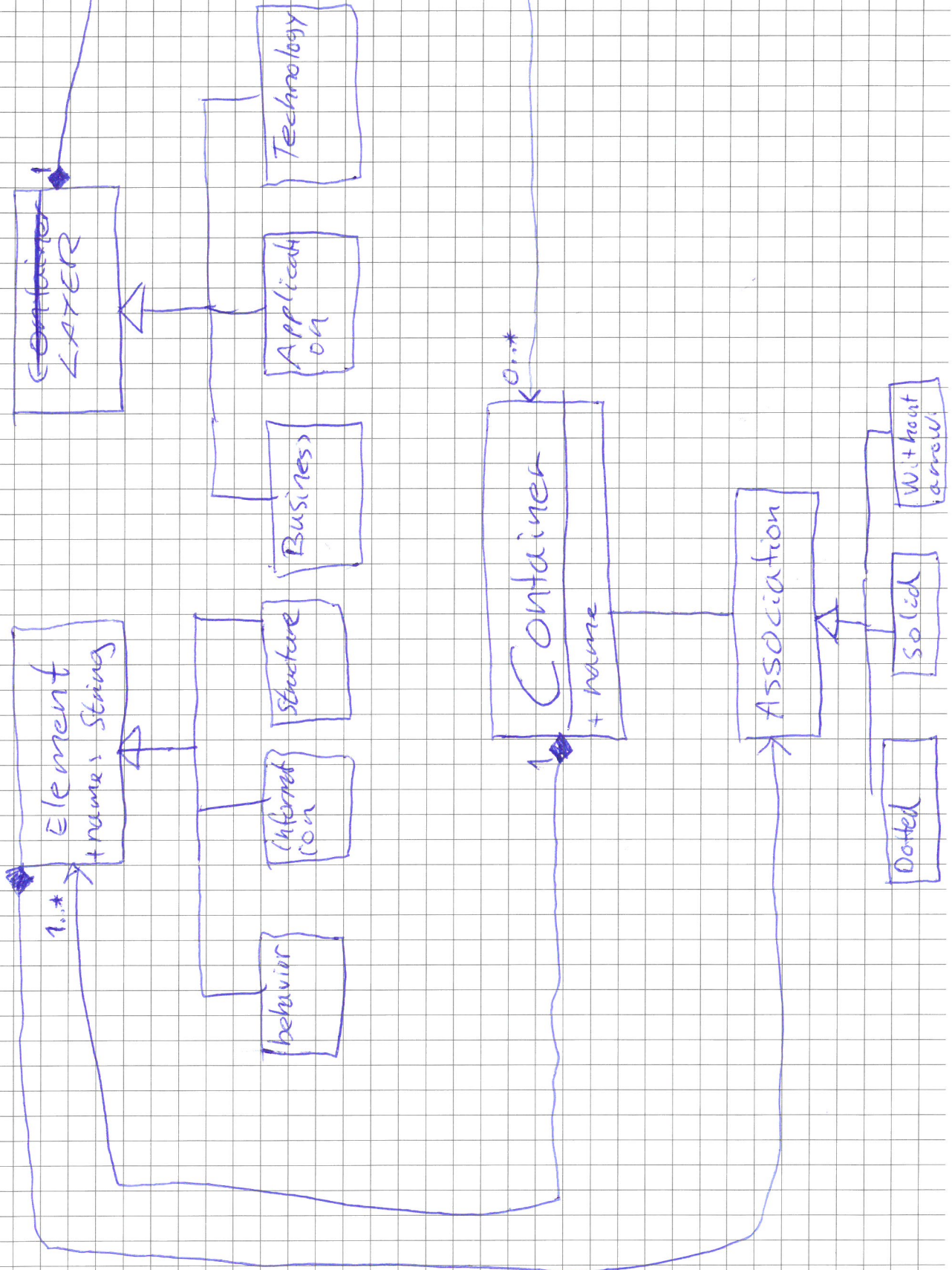
2e



Den grønne kopien beholdes av kandidaten./ The green copy is retained by the candidate.

Skriv ikke her /
Do not write here

3a)





Skriv ikke her /
Do not write here

3b)

Start by creating a metamodel in EclipseEcore. Generate code (model, edit, editor) from the metamodel. Run a new instance of eclipse from the generated editor code.

Create a EMF model from the meta model.
Create a new viewpoint with all the elements from the metamodel.
Create a new diagram with domain class based on the root element
Create the different nodes and associations you want for your nodes
Create the different tool sections you want (and group similar nodes together). This will create the tool palette for your editor.
When this is done, you can create many different domain models with your DSL by using the editor and the nodes / elements from the tool palette.



Skriv ikke her /
Do not write here

3c)

Start by importing or defining the metamodel for ArchiMate model

Then write the MOFScript to transform ArchiMate into e.g. XML. by using templates and for loops.
Compile the transformation.

Load a source model of ~~ArchiMate~~ corresponding to ArchiMate's meta model.

Execute the script, text output is produced.