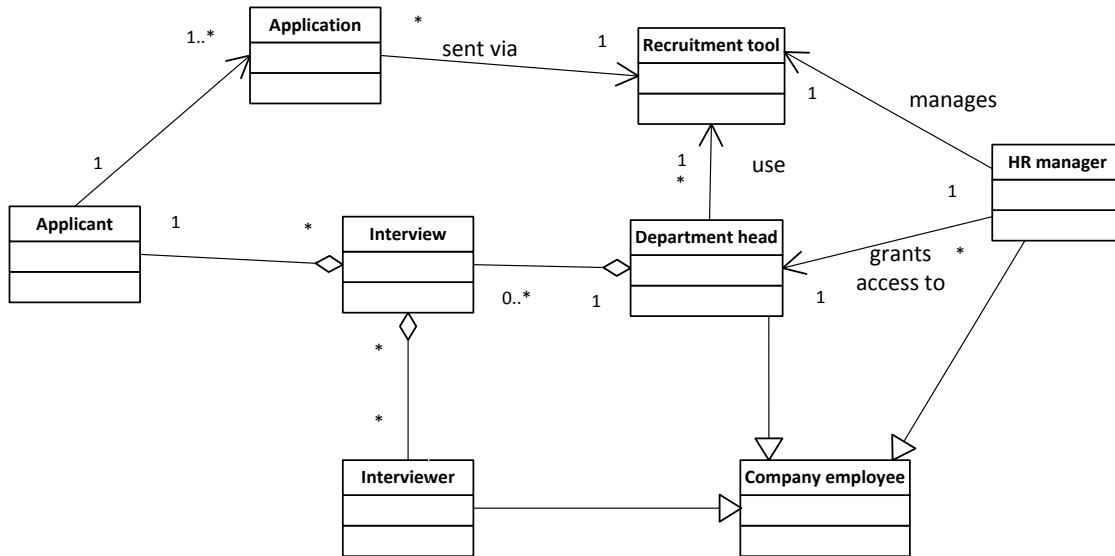


Exercise I

a)

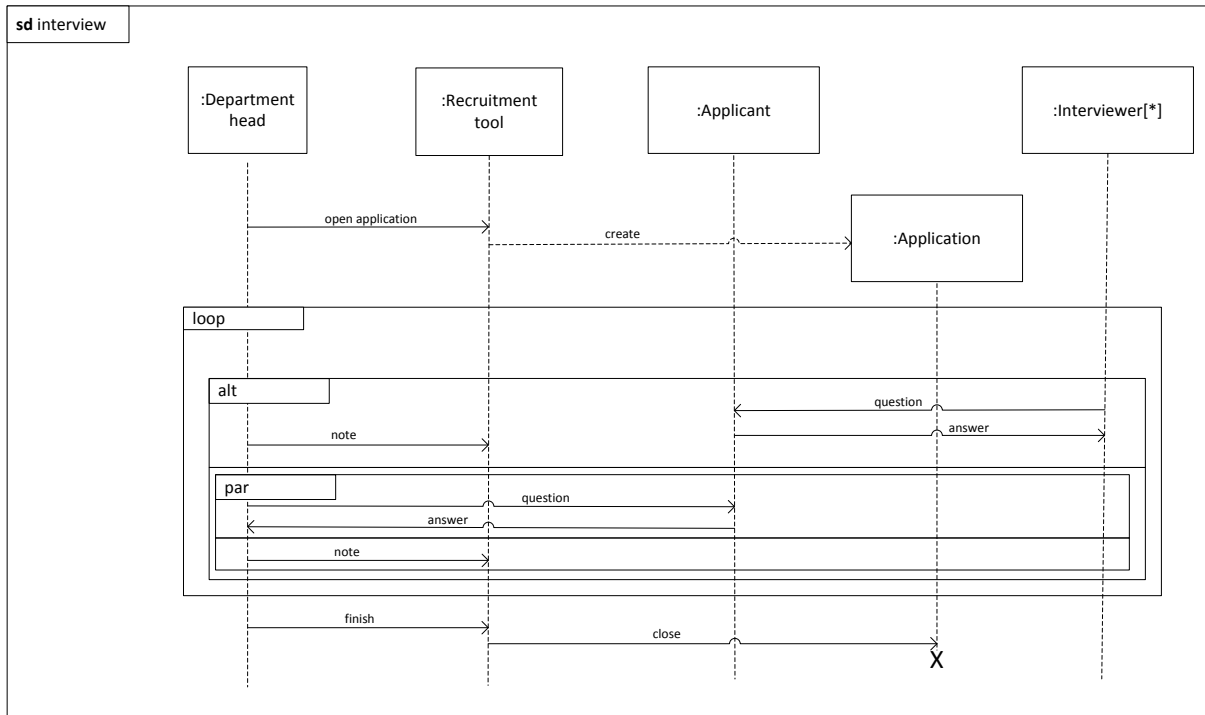


b)

- The interviewers, the department heads and the HR manager are all company employees
- An interview is organized by the department head and involves one applicant and several interviewers
- The HR manager manages the recruitment tool including granting access
- The applicant send may send several applications via the same recruitment tool

Exercise II

a)



b)

8

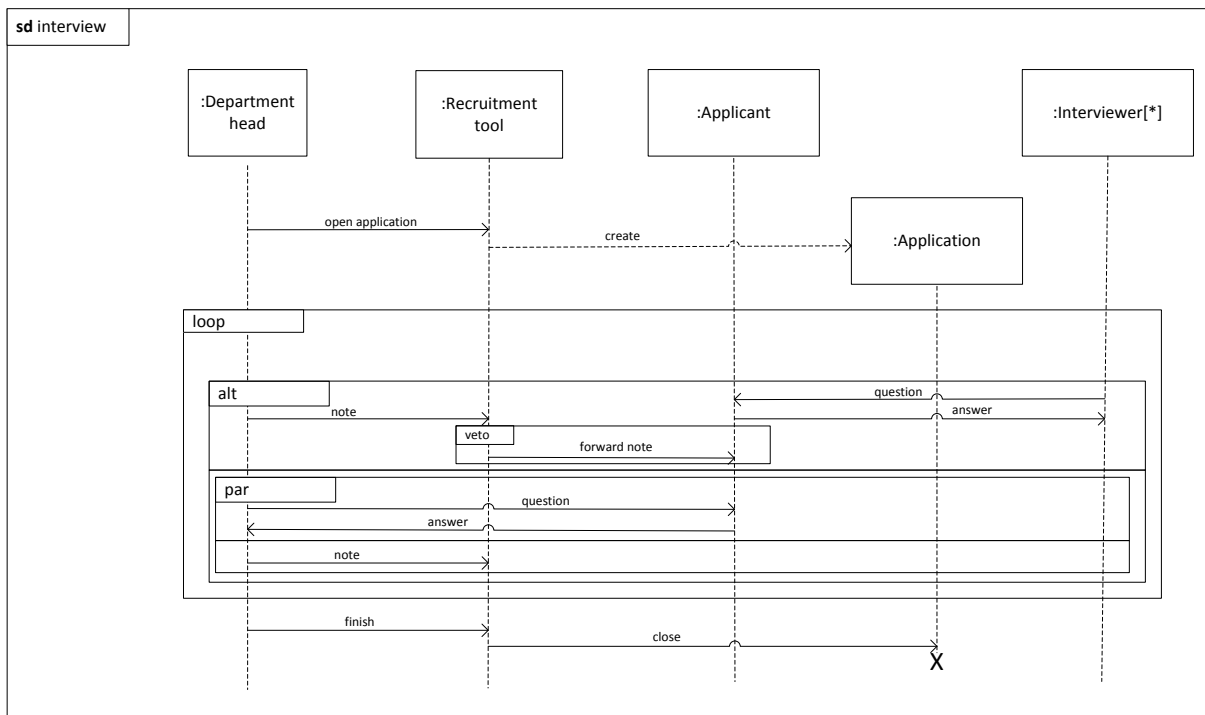
c)

Infinite

d)

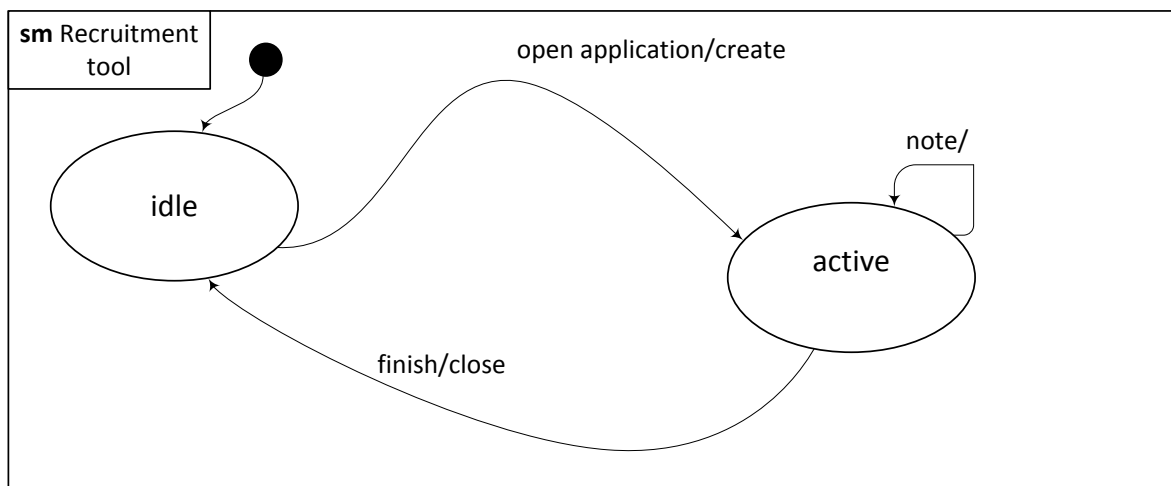
<open application, ?open application, !create, ?create, !question, ?question, !answer, !note, ?answer, ?note, !finish, ?finish, !close, ?close>

e)



Exercise III

a)



b)

Any trace of the sequence diagram can also be produced by the state machine.