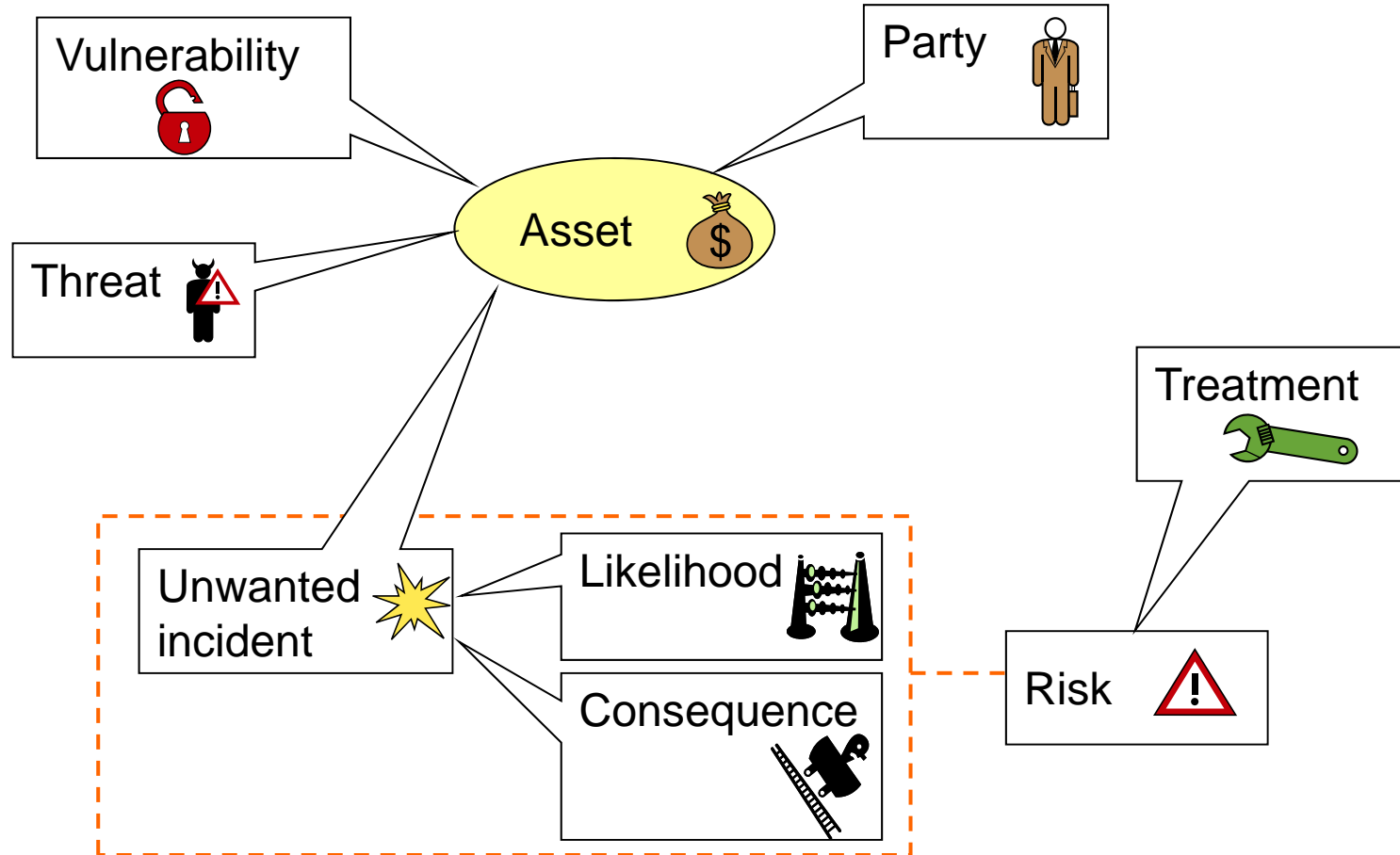
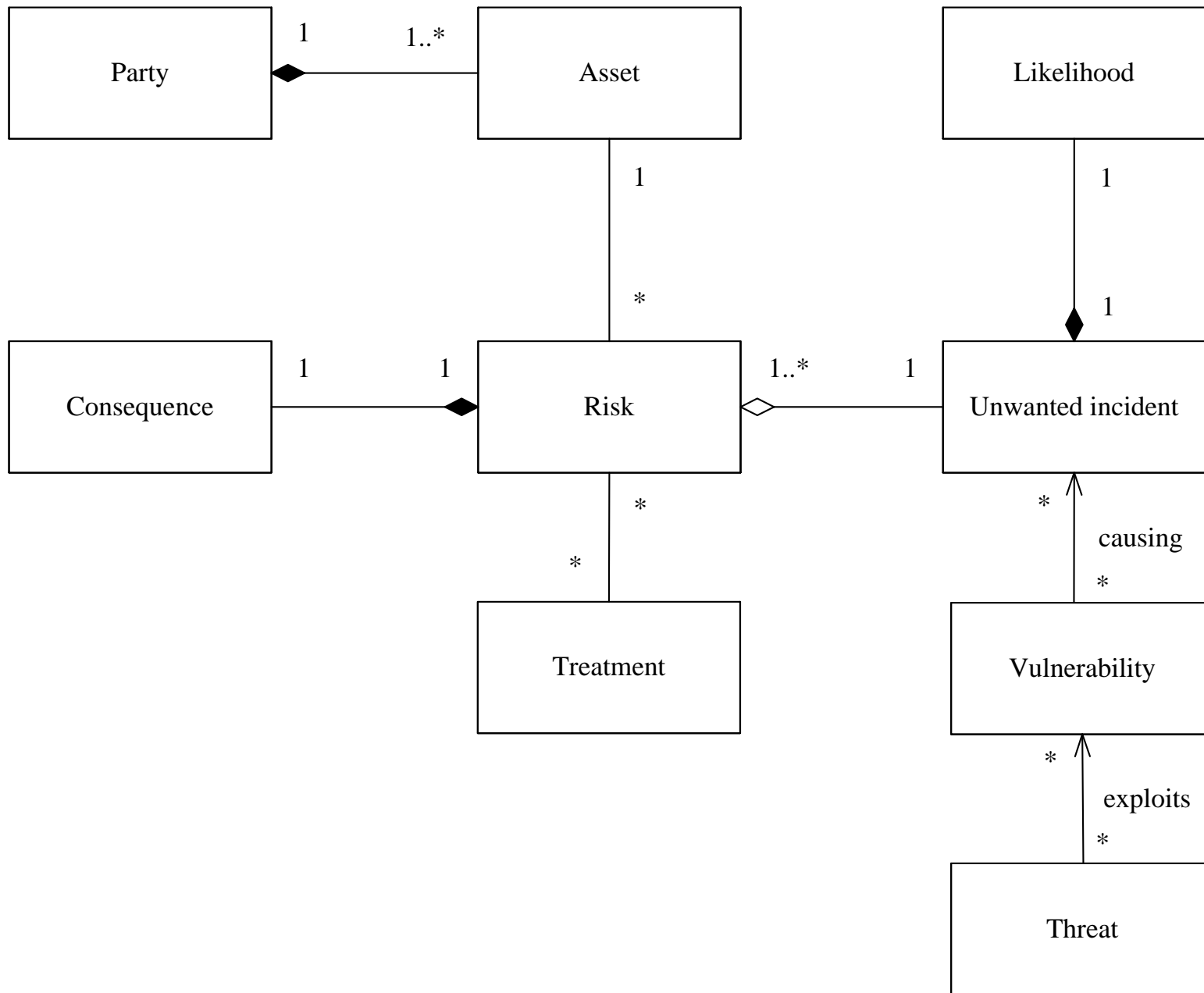
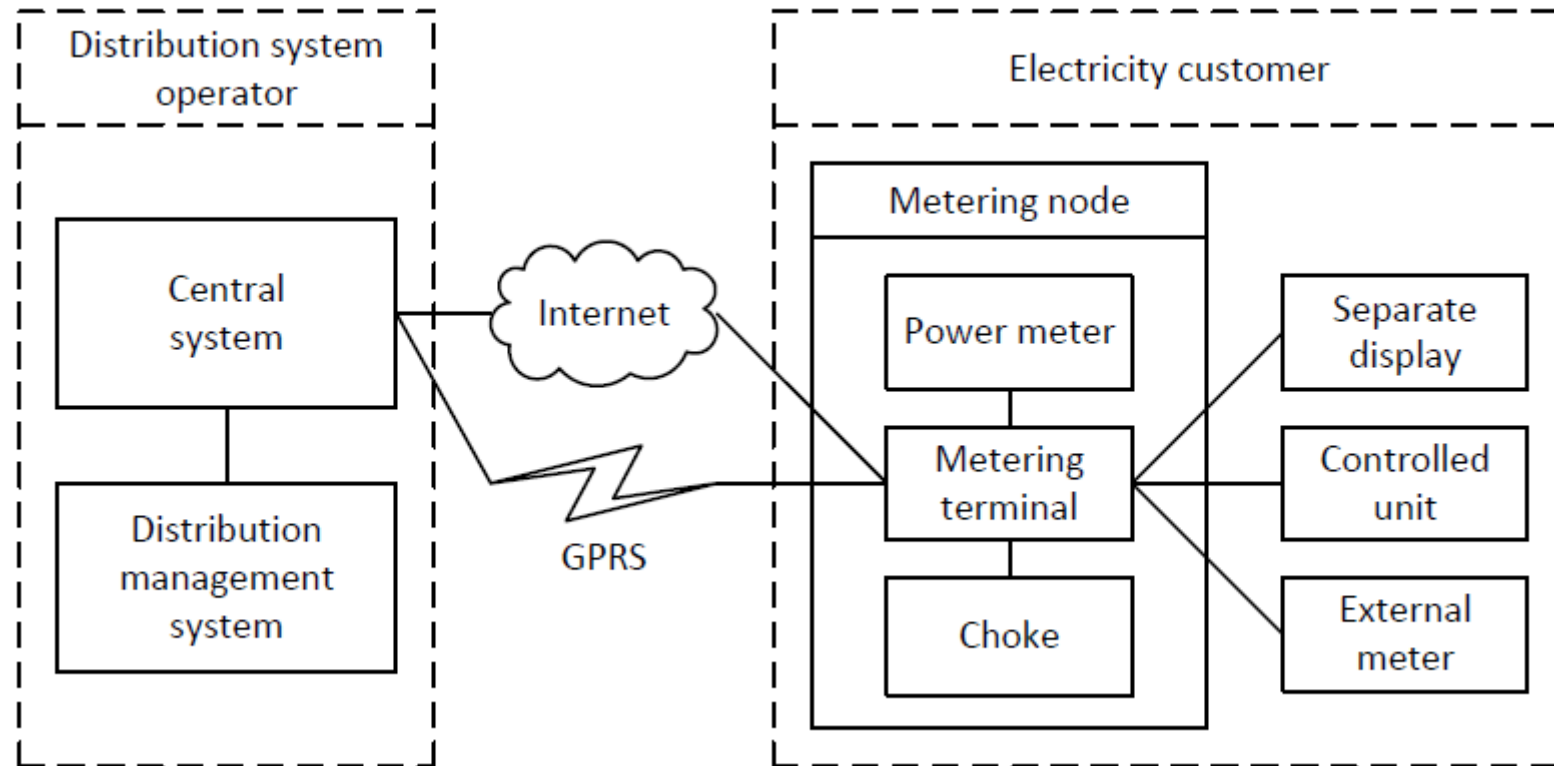


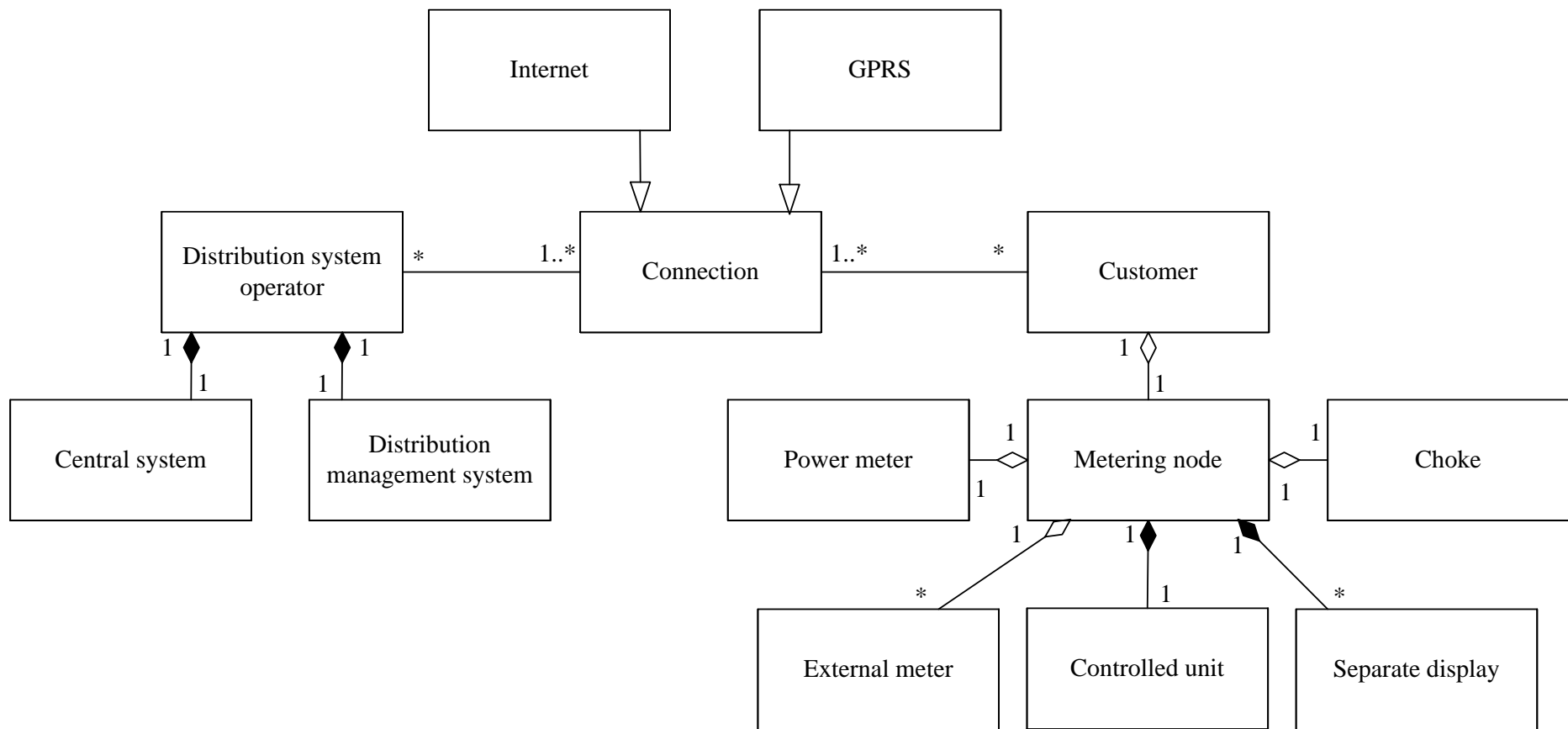
# Represent the drawing below in UML





# Model using UML class diagram





# Identify major threat profiles

- Describe them in terms of resources, ability, intention

# Some alternatives

See the following paper for a published answer to this question:

- Buckshaw, D., Parnell, G., et. al., “Mission Oriented Risk and Design Analysis of Critical Information Systems (MORDA)”, Military Operations Research, V10, 2005, pp. 19-38
  - The nine adversary classes are defined on page 25
  - The paper is freely available on the web

You may also benefit from having a look at:

- Creating a Threat Profile for Your Organization. SANS Institute.  
[https://www.mitre.org/sites/default/files/pdf/11\\_4982.pdf](https://www.mitre.org/sites/default/files/pdf/11_4982.pdf)