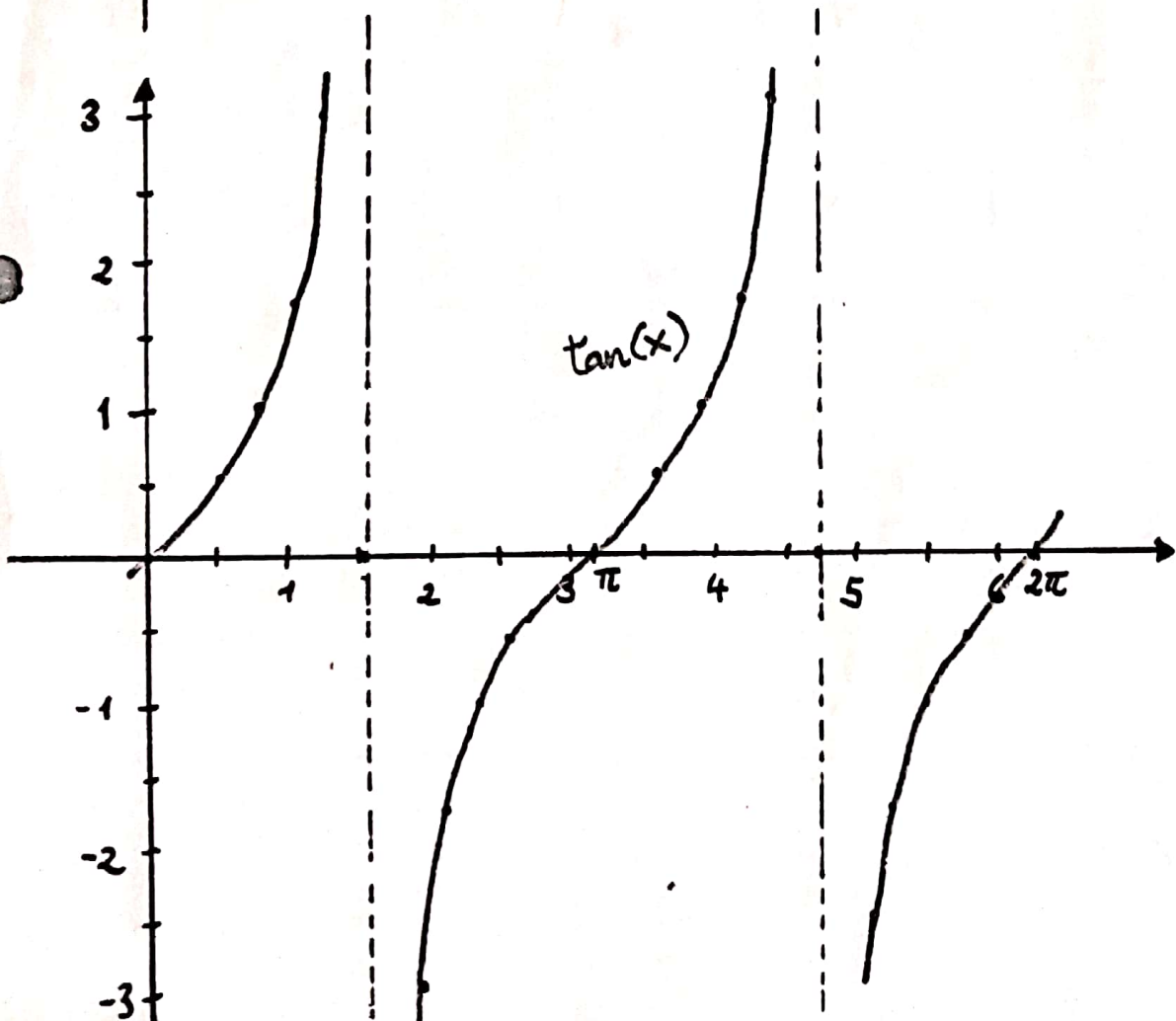
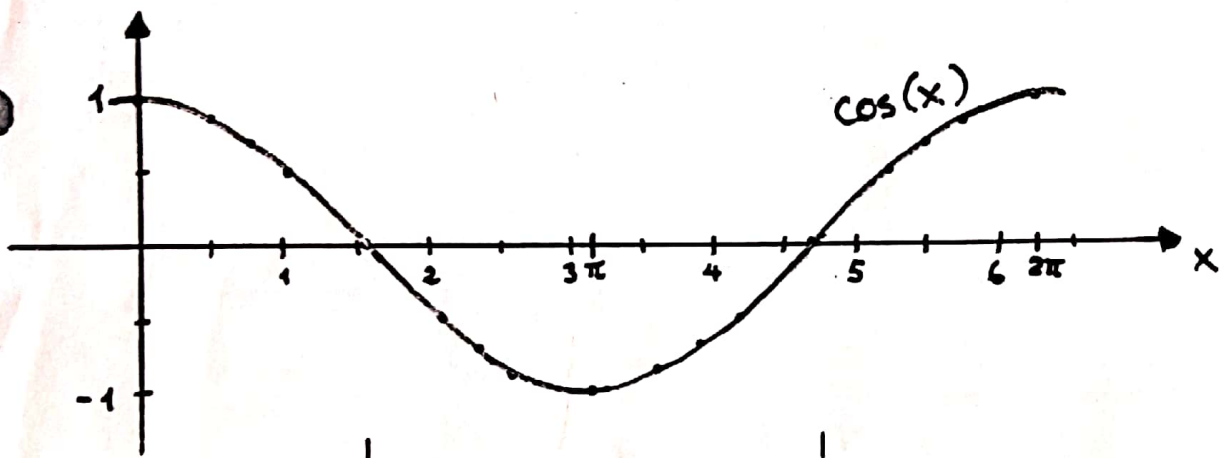
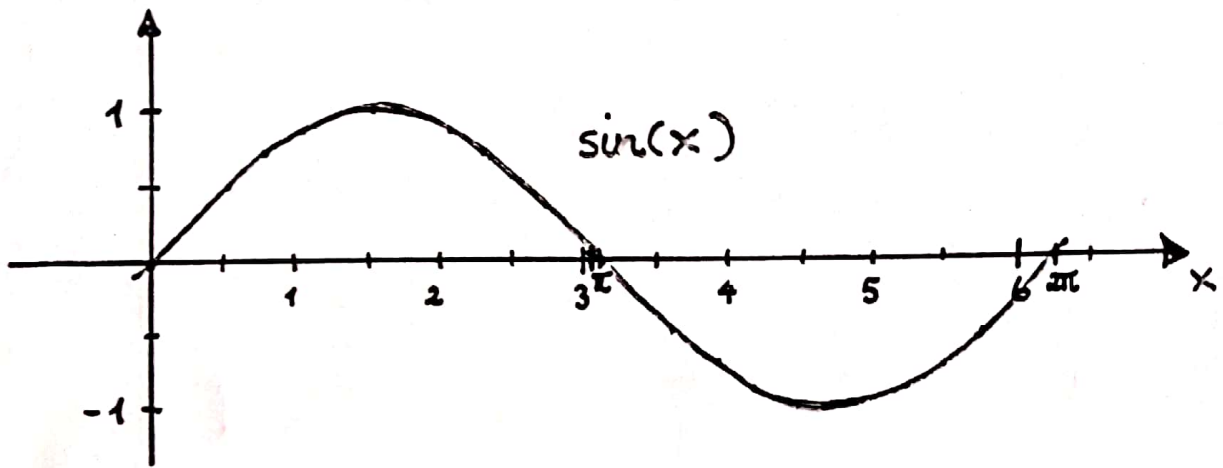
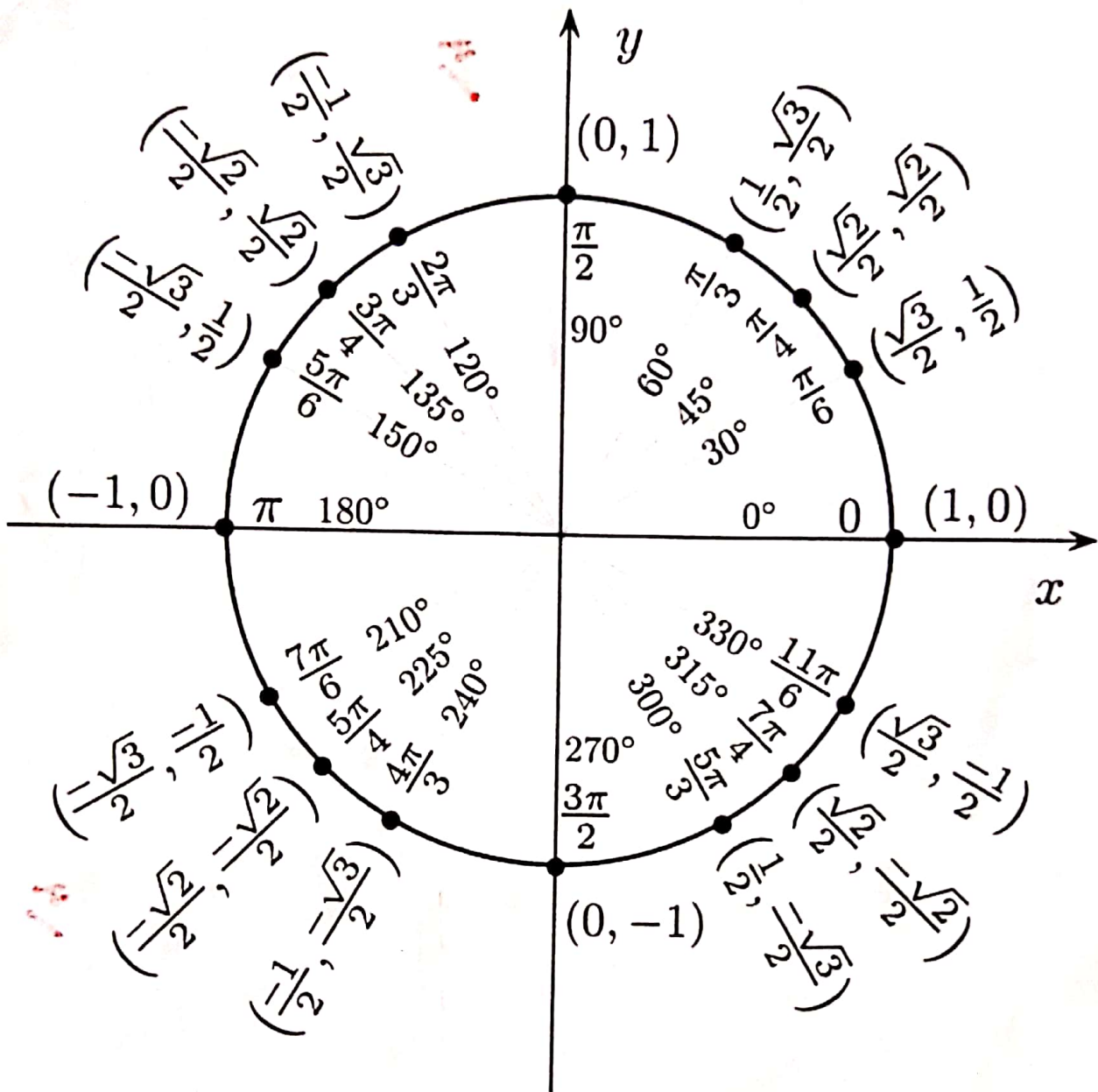


Eksakte verdier for sinus, cosinus & tangens.

MAT0011
UiO

ν (grader)	0	30	45	60	90	120	135	150	180	210	225	240	270	300	315	330	360
ν (radianer)	0	$\frac{\pi}{6}$	$\frac{\pi}{4}$	$\frac{\pi}{3}$	$\frac{\pi}{2}$	$\frac{2\pi}{3}$	$\frac{3\pi}{4}$	$\frac{5\pi}{6}$	π	$\frac{7\pi}{6}$	$\frac{5\pi}{4}$	$\frac{4\pi}{3}$	$\frac{3\pi}{2}$	$\frac{5\pi}{3}$	$\frac{7\pi}{4}$	$\frac{11\pi}{6}$	2π
$\sin(\nu)$																	
$\cos(\nu)$																	
$\tan(\nu)$																	





$\sin(\theta)$

