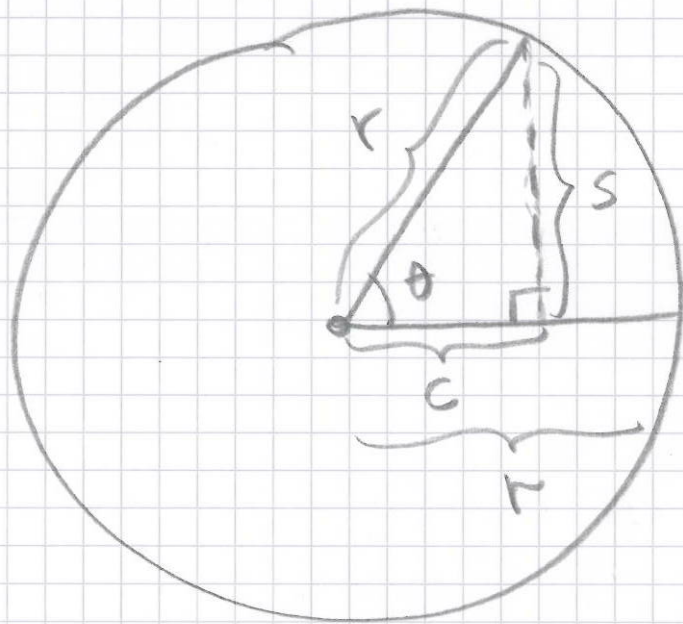


Ang. spm. plenum 15/10-14:



$$\sin \theta = \frac{\text{motstående}}{\text{hypotenus}} = \frac{s}{r}$$

Definisjon!

$$\cos \theta = \frac{\text{hosliggende}}{\text{hypotenus}} = \frac{c}{r}$$

Definisjon!

\Downarrow

$$r \sin \theta = s$$

$$r \cos \theta = c$$