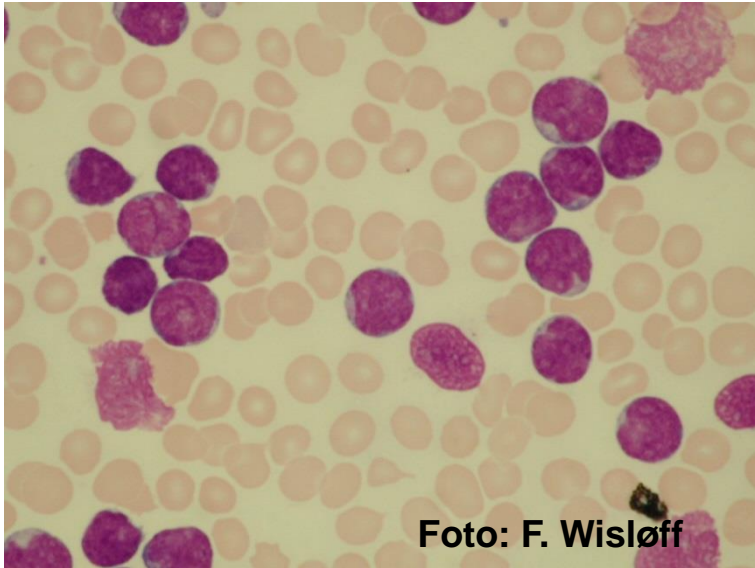
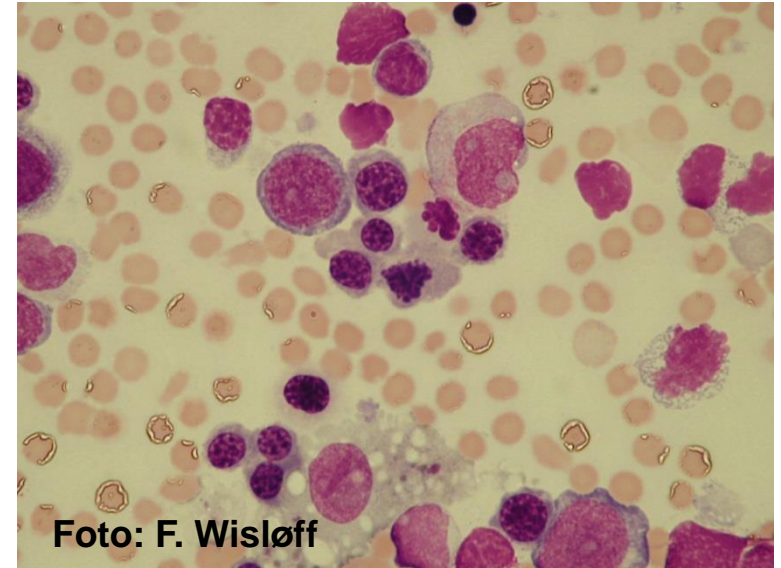


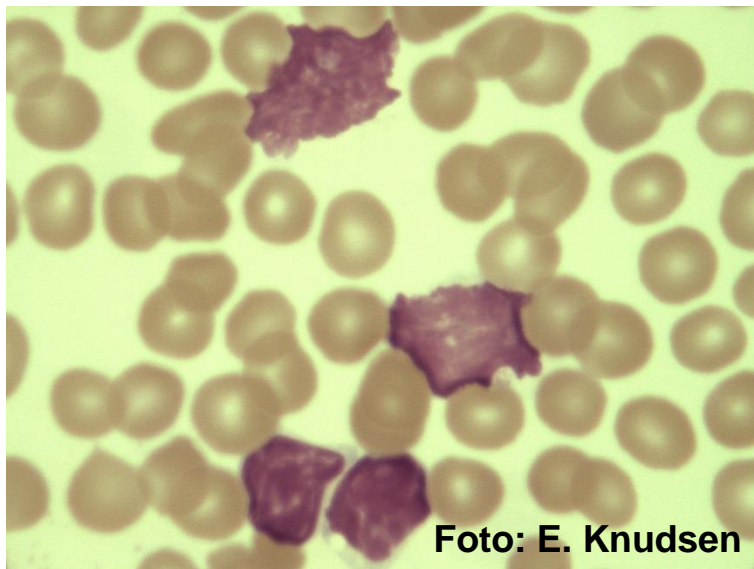
## Akutt lymfatisk leukemi



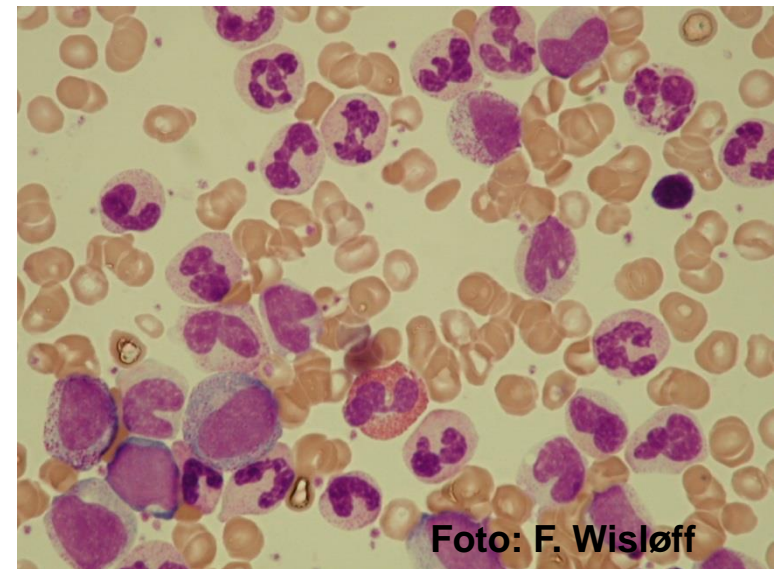
## Akutt myelogen leukemi

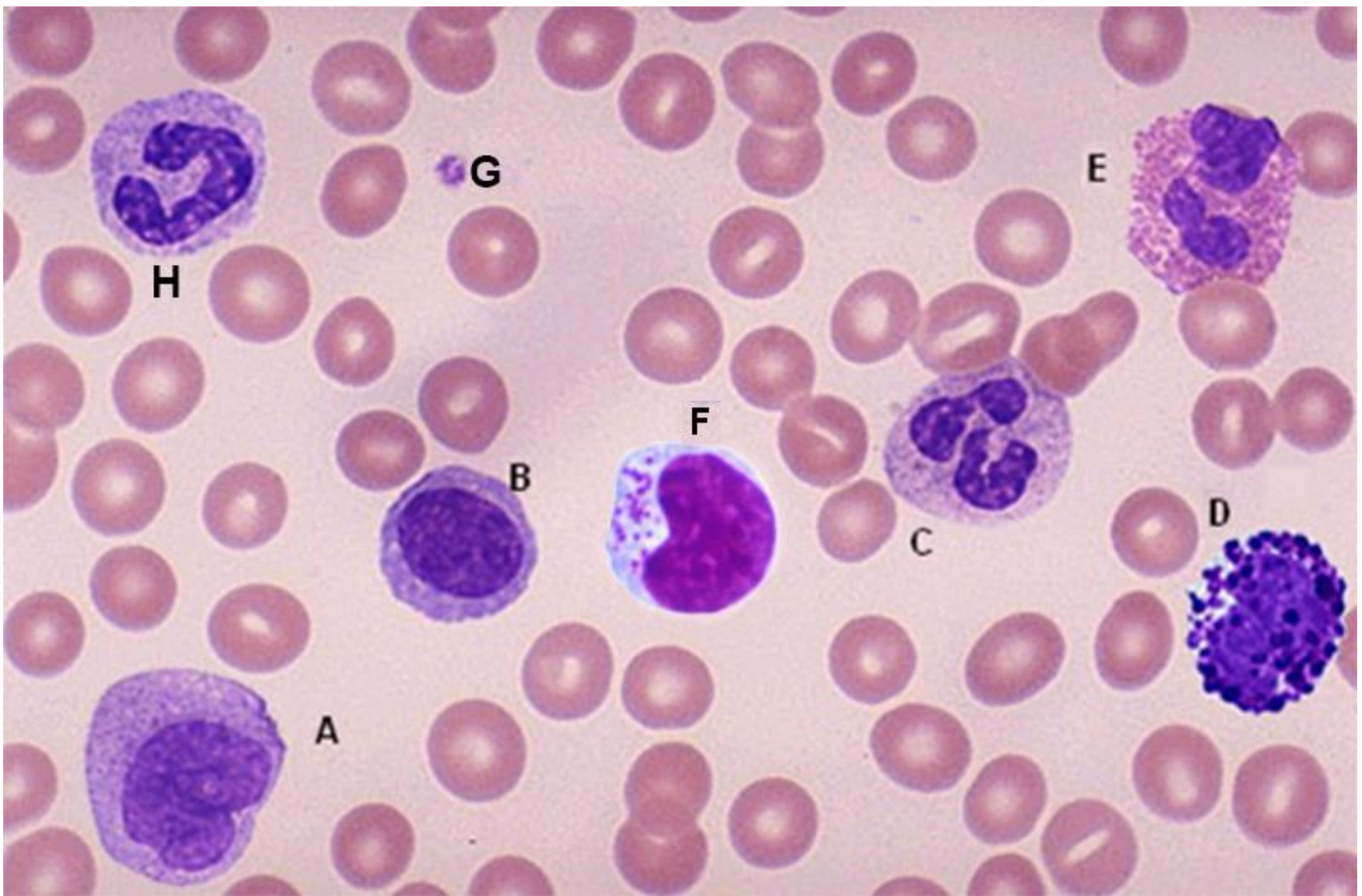


## Kronisk lymfatisk leukemi



## Kronisk myelogen leukemi





A: Monocyt

B: Lymfocyt

C: Segmentkjernet granulocyt

D: Basofil

E: Eosinofil

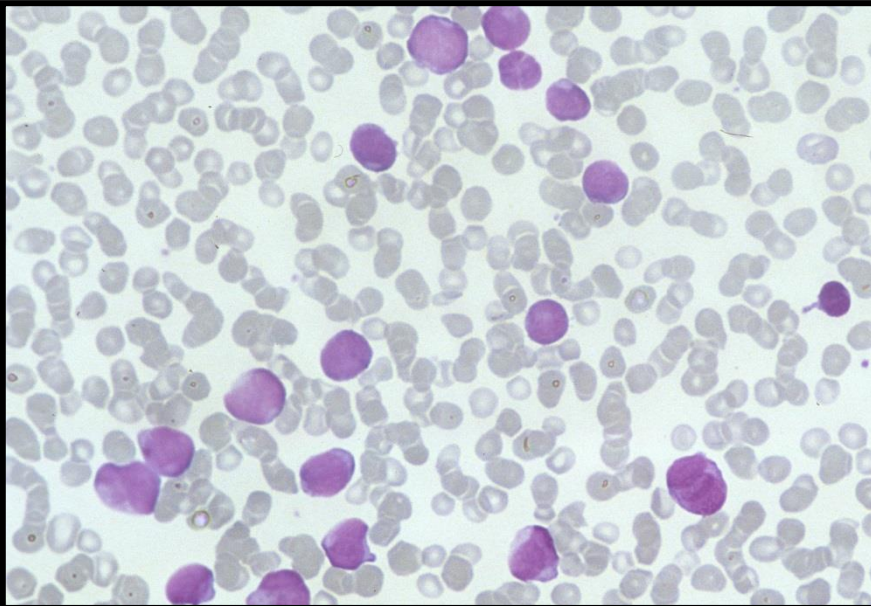
F: NK-celle

G: Trombocyt/bloodplate

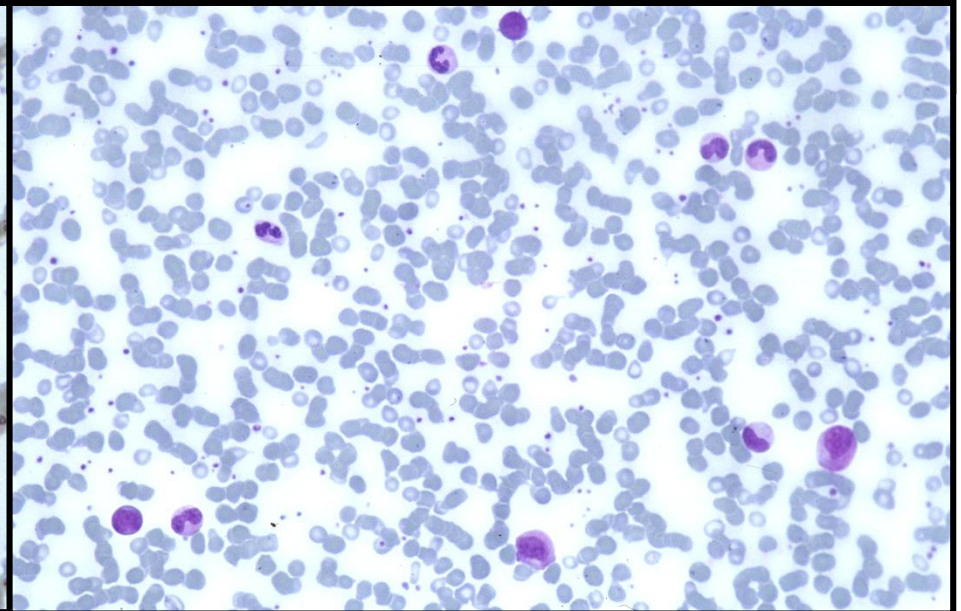
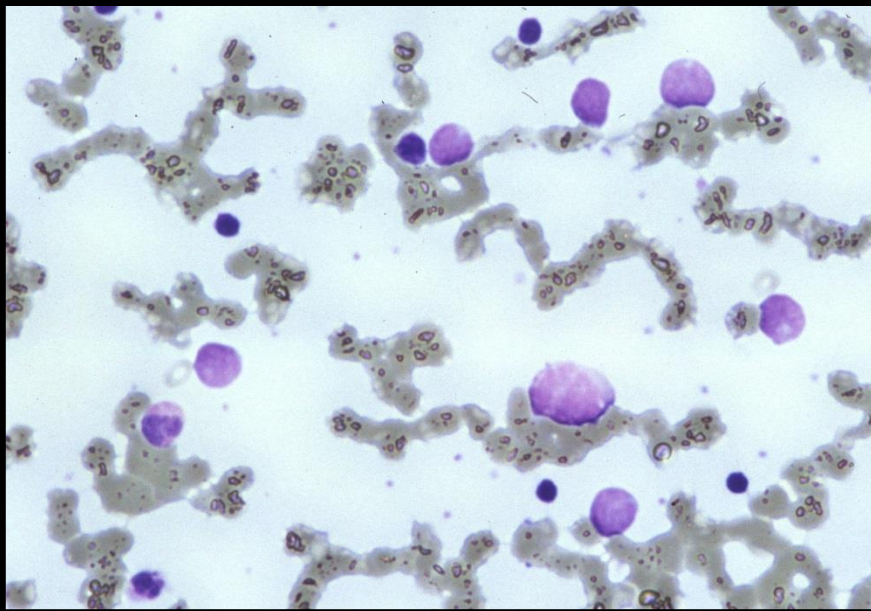
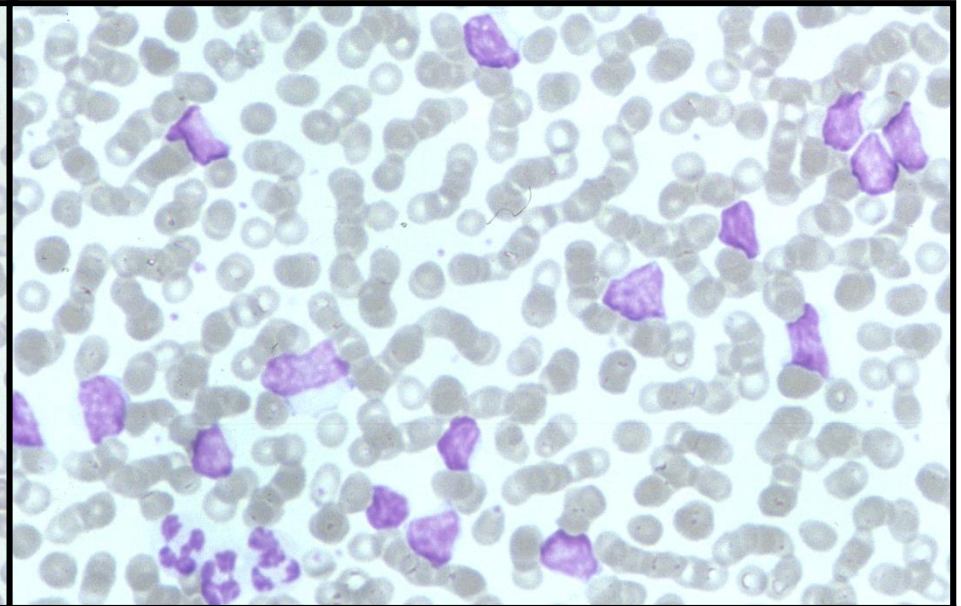
H: Stavkjernet granulocyt



**akutt lymfatisk leukemi**



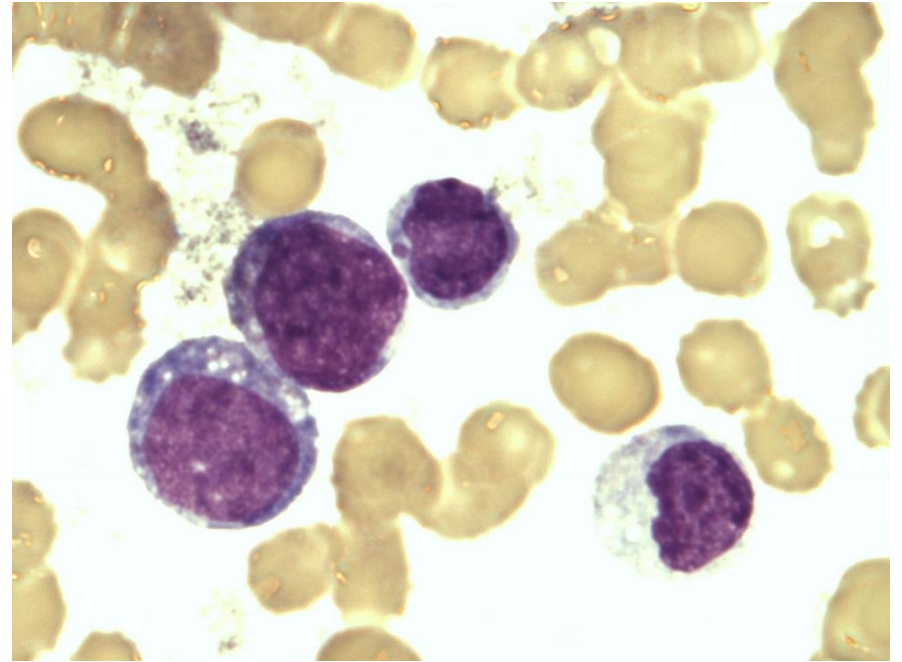
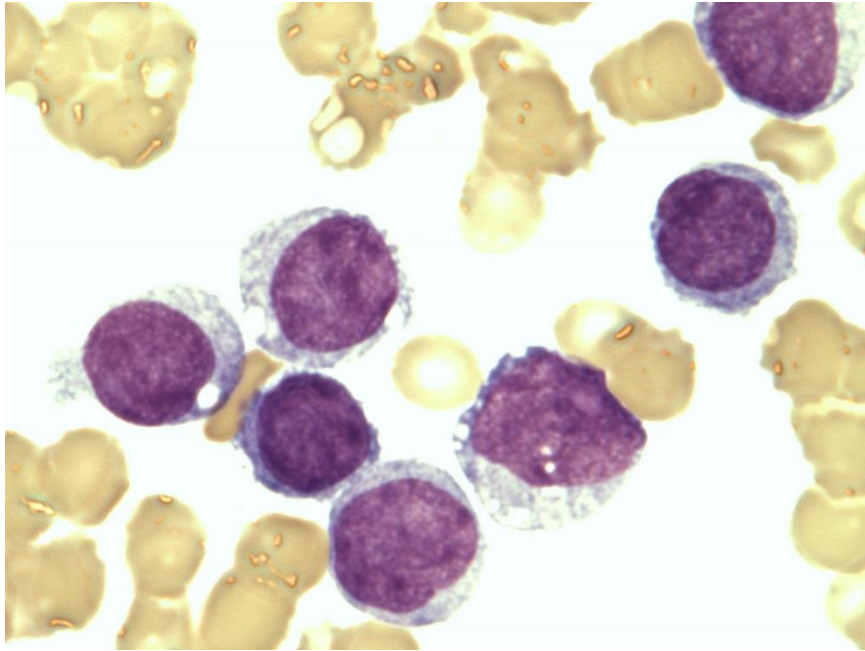
**kronisk lymfatisk leukemi**



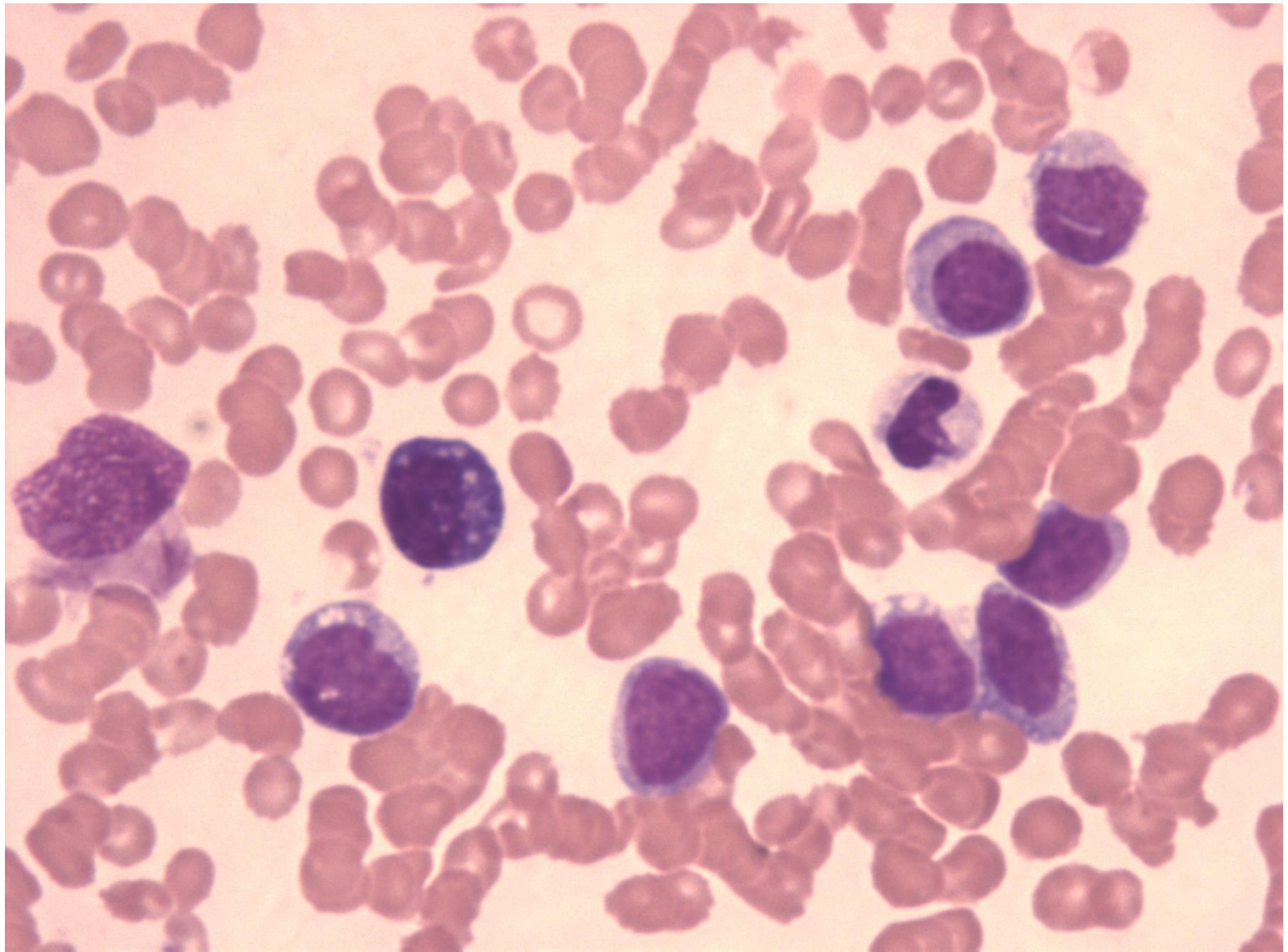
**akutt myelogen leukemi**

**kronisk myelogen leukemi**

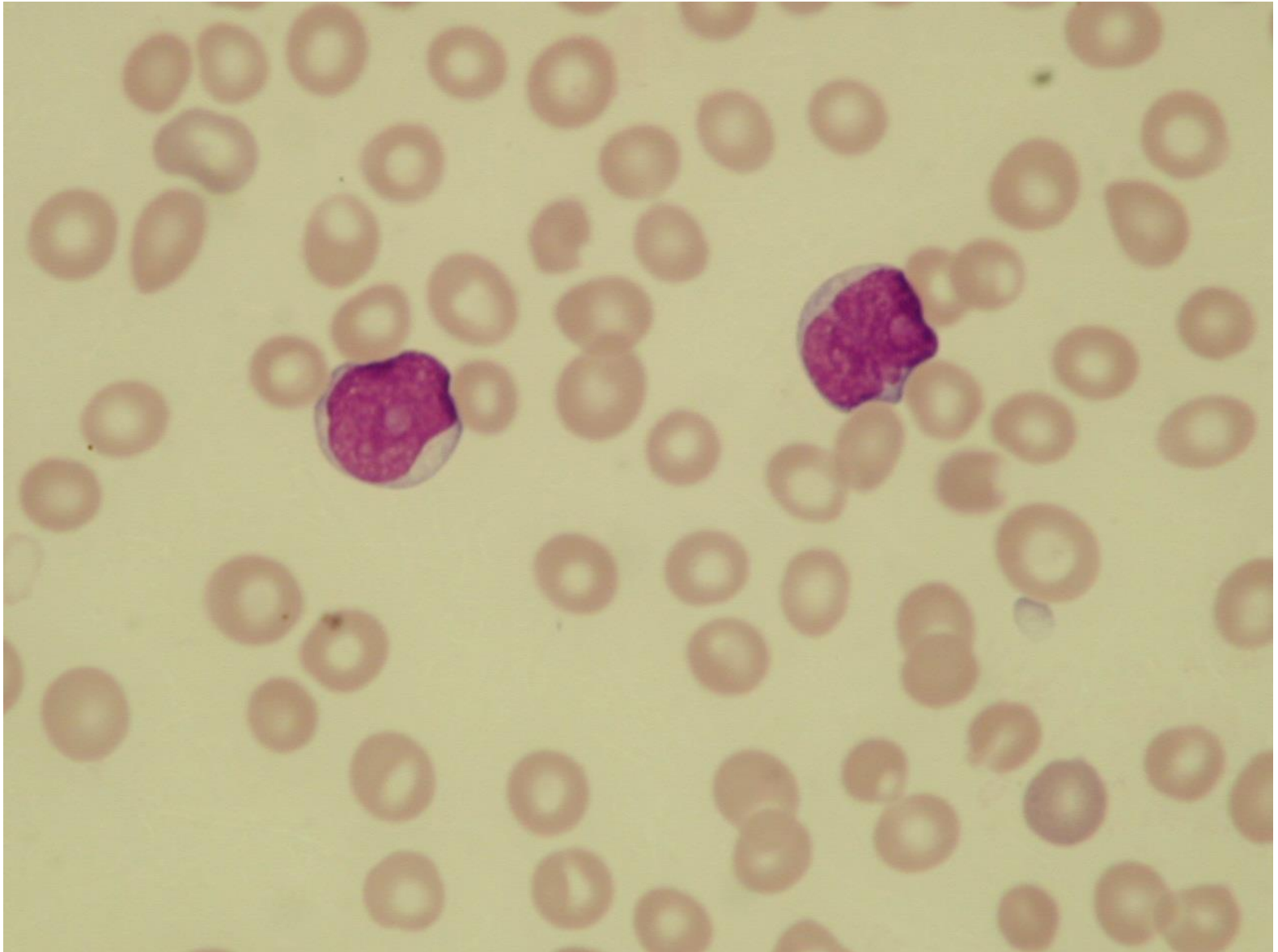
# Akutt myeloid leukemi



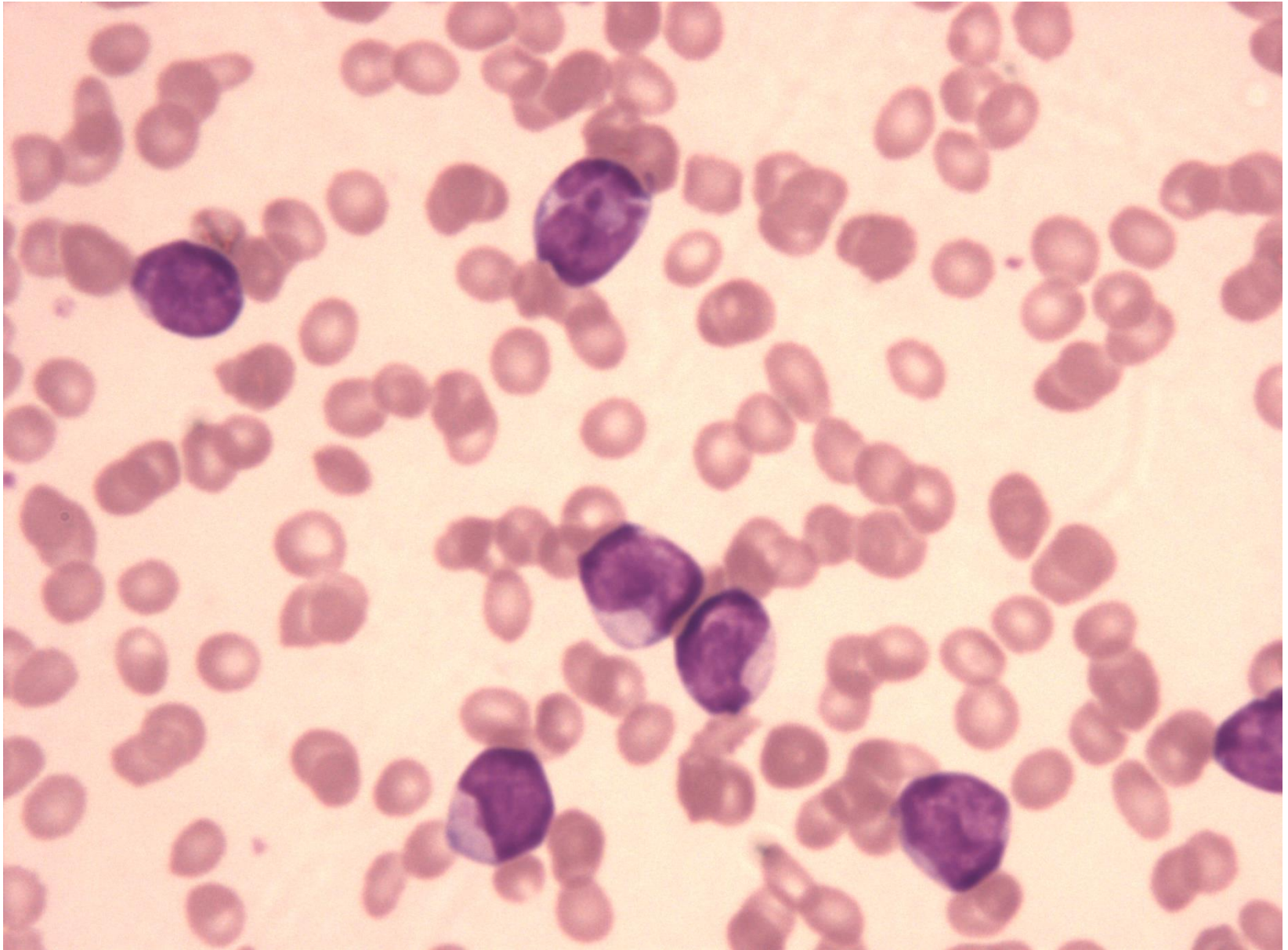




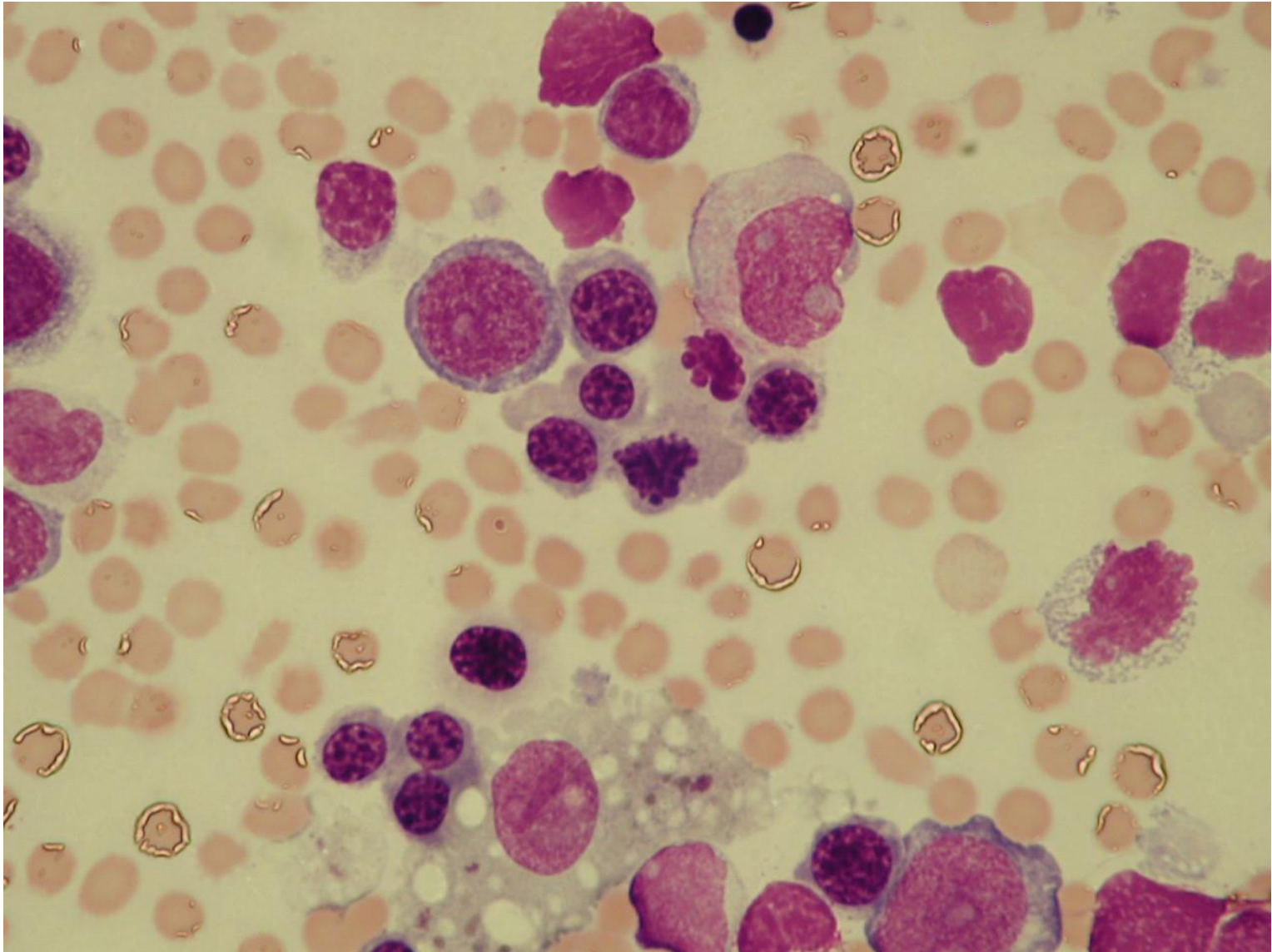
# Akutt lymfatisk leukemi





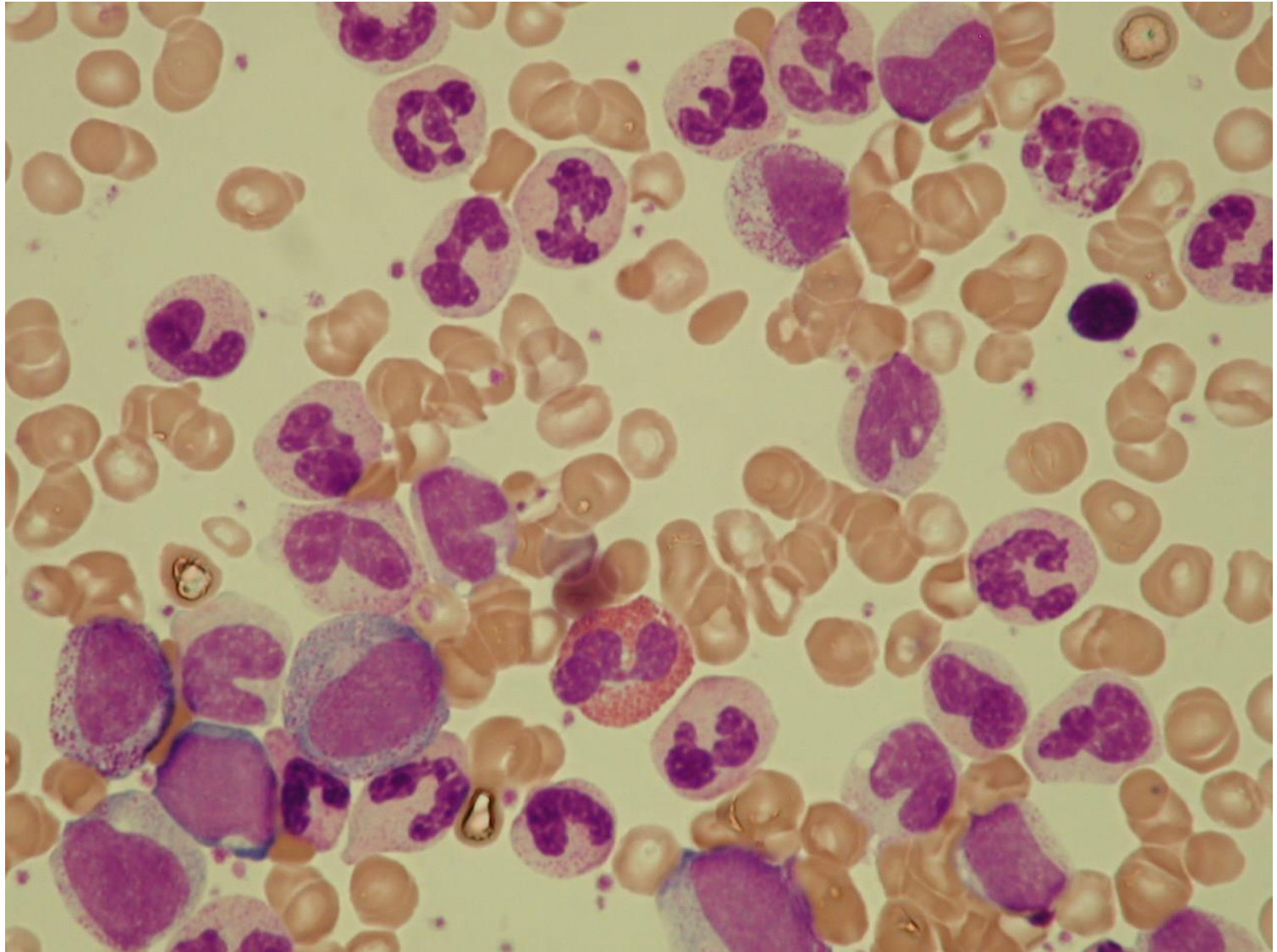


# Akutt myelogen leukemi

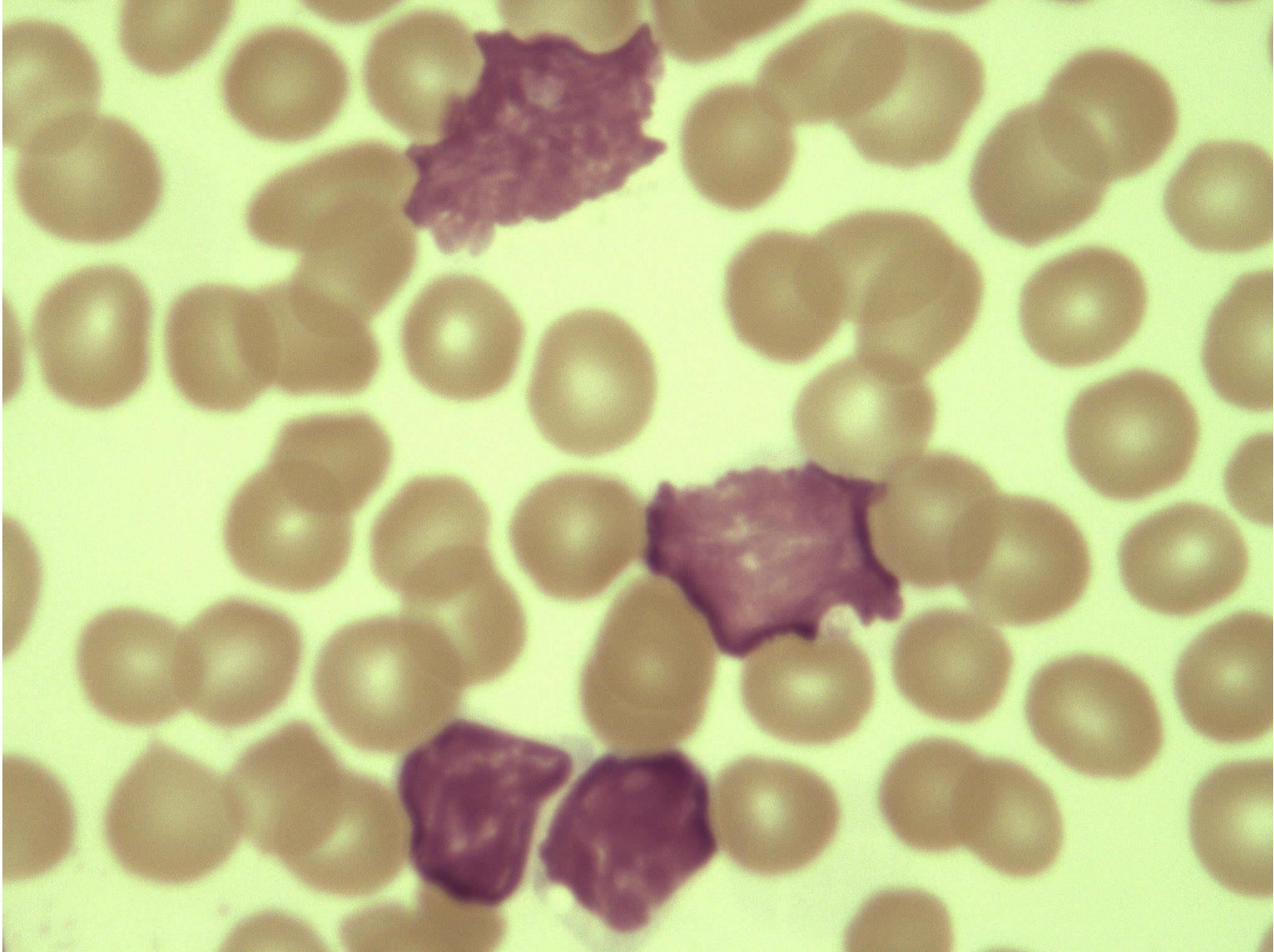




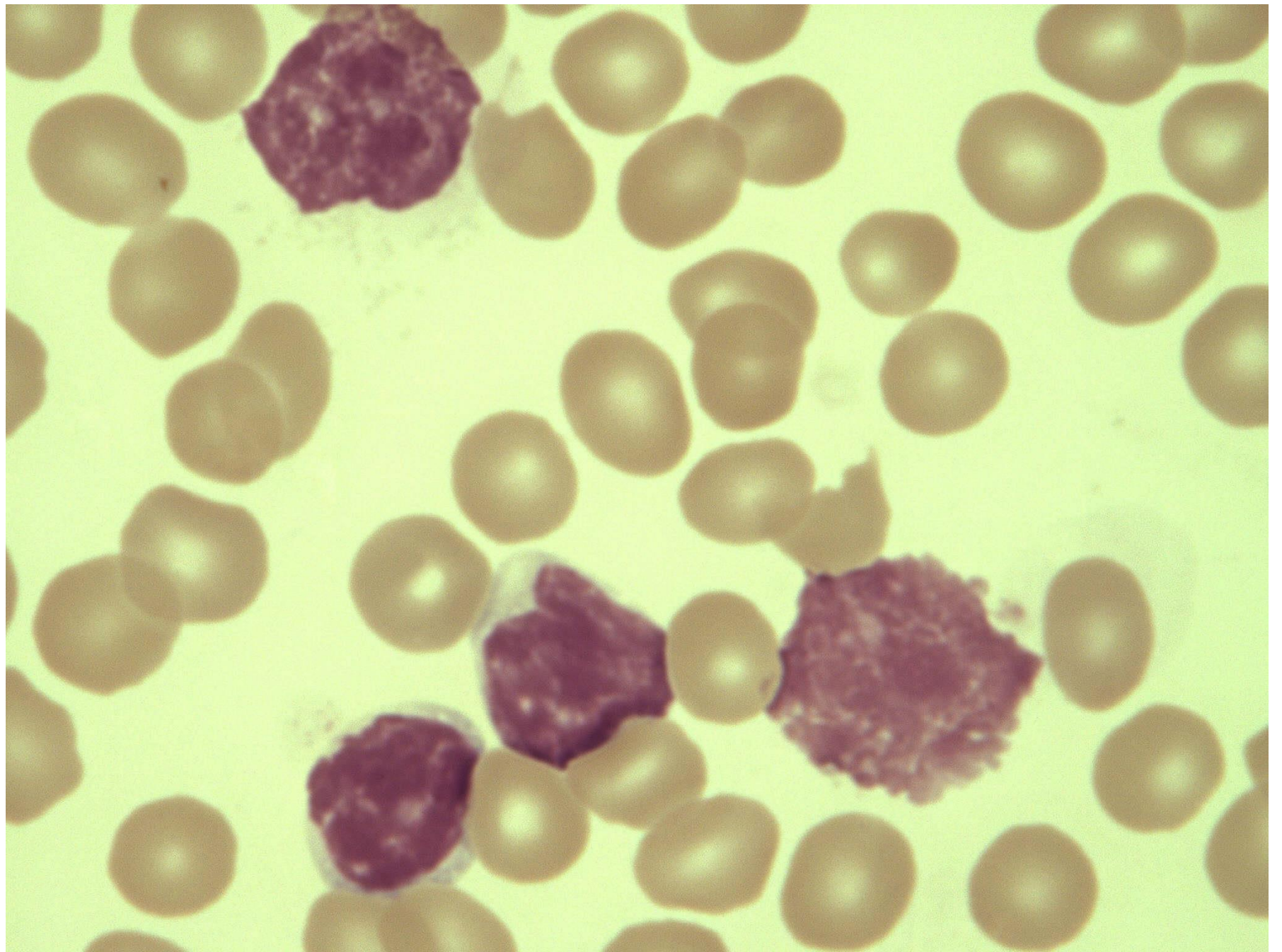
# Kronisk myelogen leukemi



# Kronisk lymfatisk leukemi









# Kronisk Myleogen leukemi

