




Healthy mother  
Healthy baby



Why structured antenatal care?  
\_\_\_\_\_

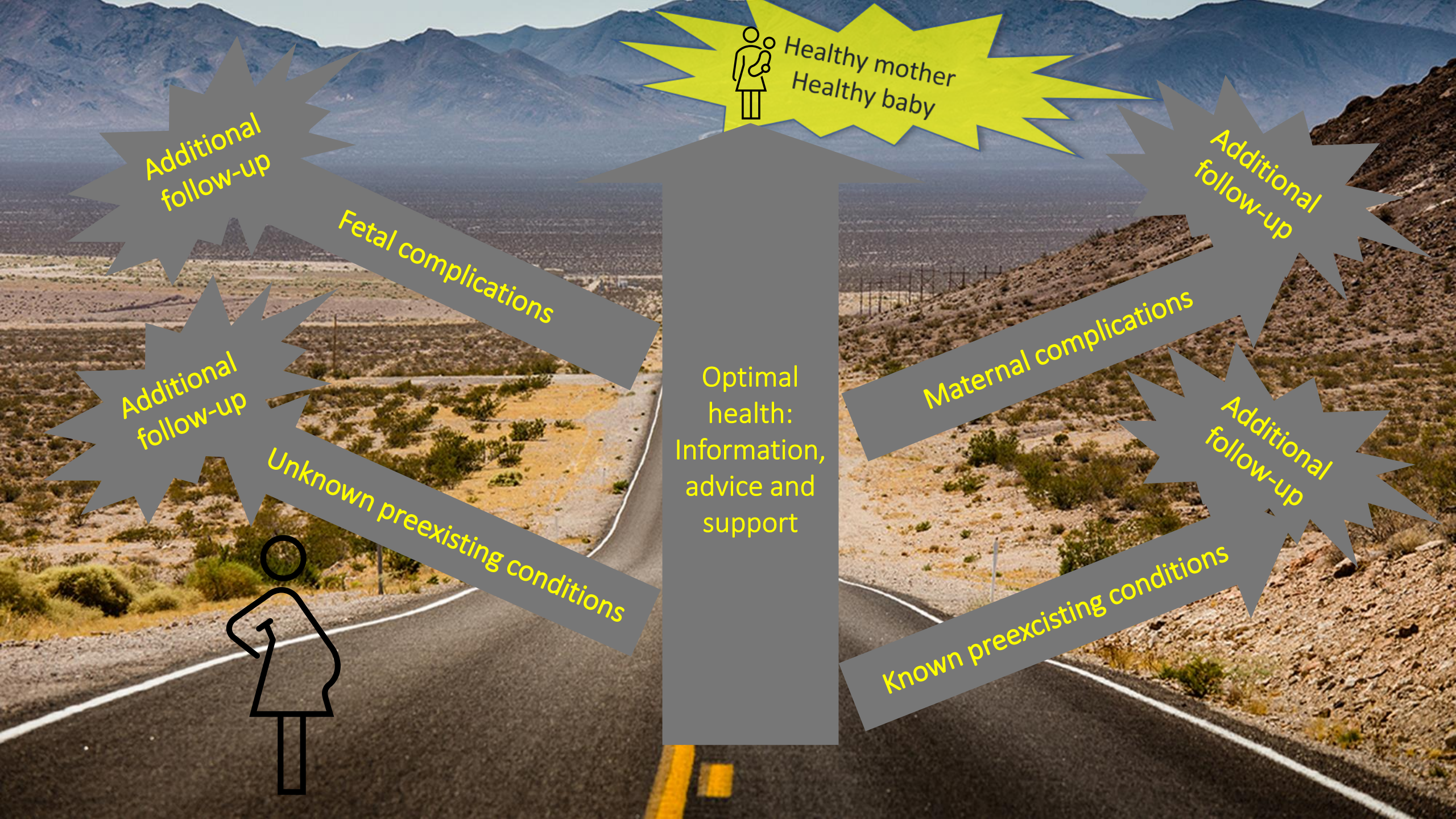




 Healthy mother  
Healthy baby







Healthy mother  
Healthy baby

Optimal health:  
Information,  
advice and  
support

Fetal complications

Maternal complications

Unknown preexisting conditions

Known preexisting conditions

Additional follow-up

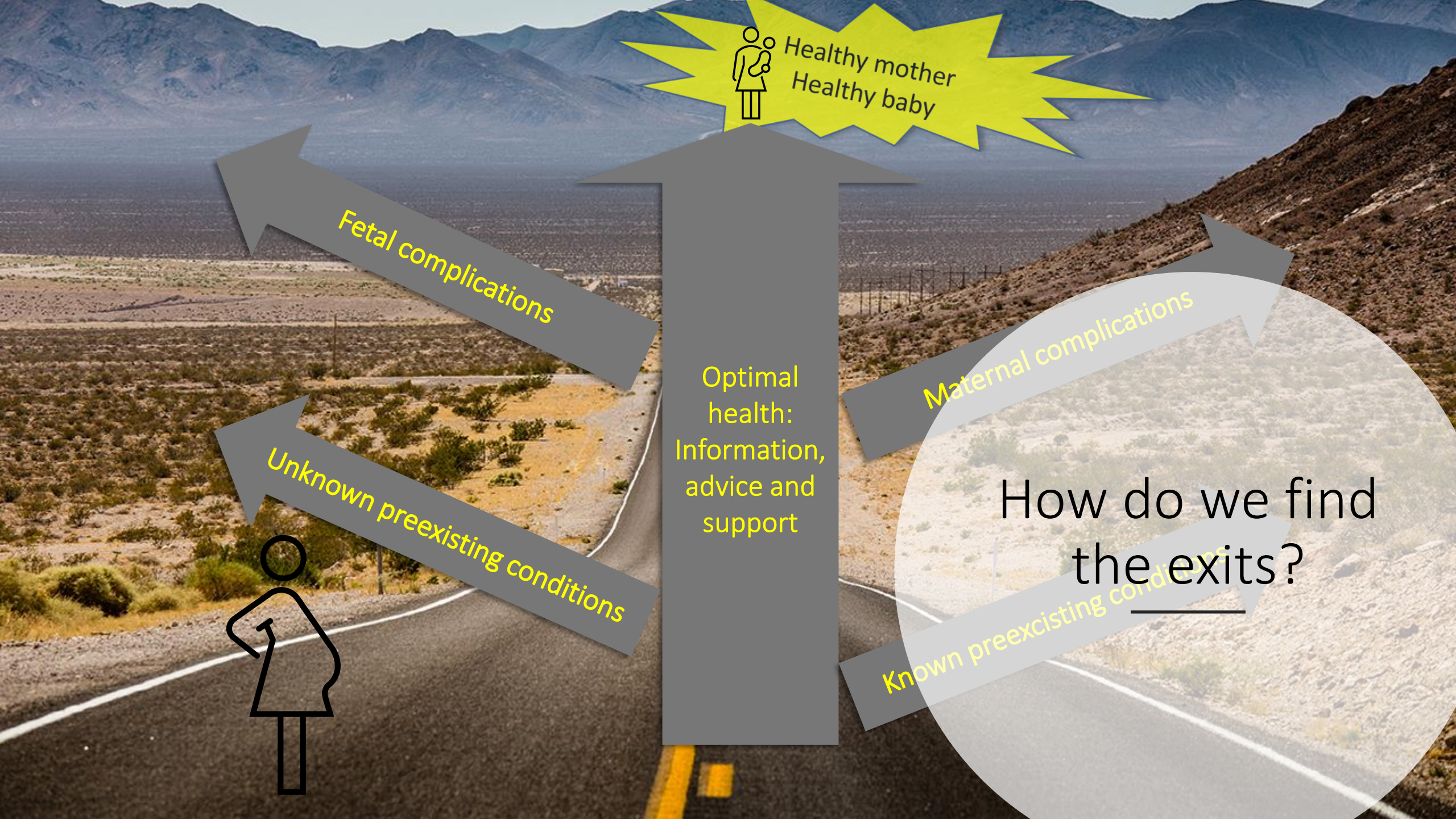
Additional follow-up

Additional follow-up

Additional follow-up







Healthy mother  
Healthy baby

Fetal complications

Maternal complications

Optimal health:  
Information,  
advice and  
support

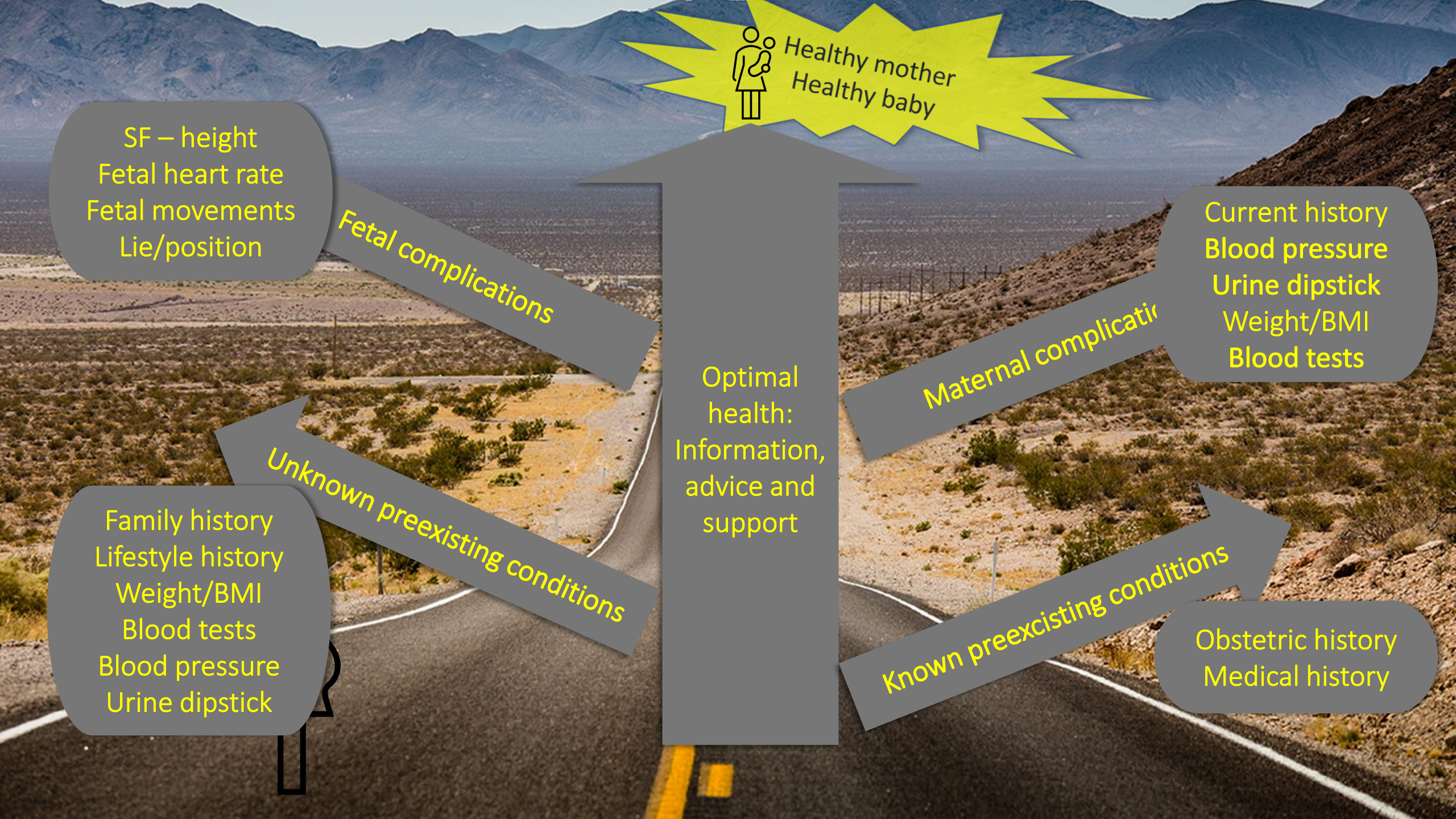
Unknown preexisting conditions



Known preexisting conditions

How do we find  
the exits?





Healthy mother  
Healthy baby

Optimal health:  
Information,  
advice and  
support

Fetal complications

SF – height  
Fetal heart rate  
Fetal movements  
Lie/position

Maternal complications

Current history  
Blood pressure  
Urine dipstick  
Weight/BMI  
Blood tests

Unknown preexisting conditions

Family history  
Lifestyle history  
Weight/BMI  
Blood tests  
Blood pressure  
Urine dipstick

Known preexisting conditions

Obstetric history  
Medical history