

Gyn examinations

<https://mediasite.ntnu.no/Mediasite/Catalog/catalogs/gynekologi>

Pregnancy wheel

- <https://www.prokerala.com/health/pregnancy/pregnancy-wheel/>

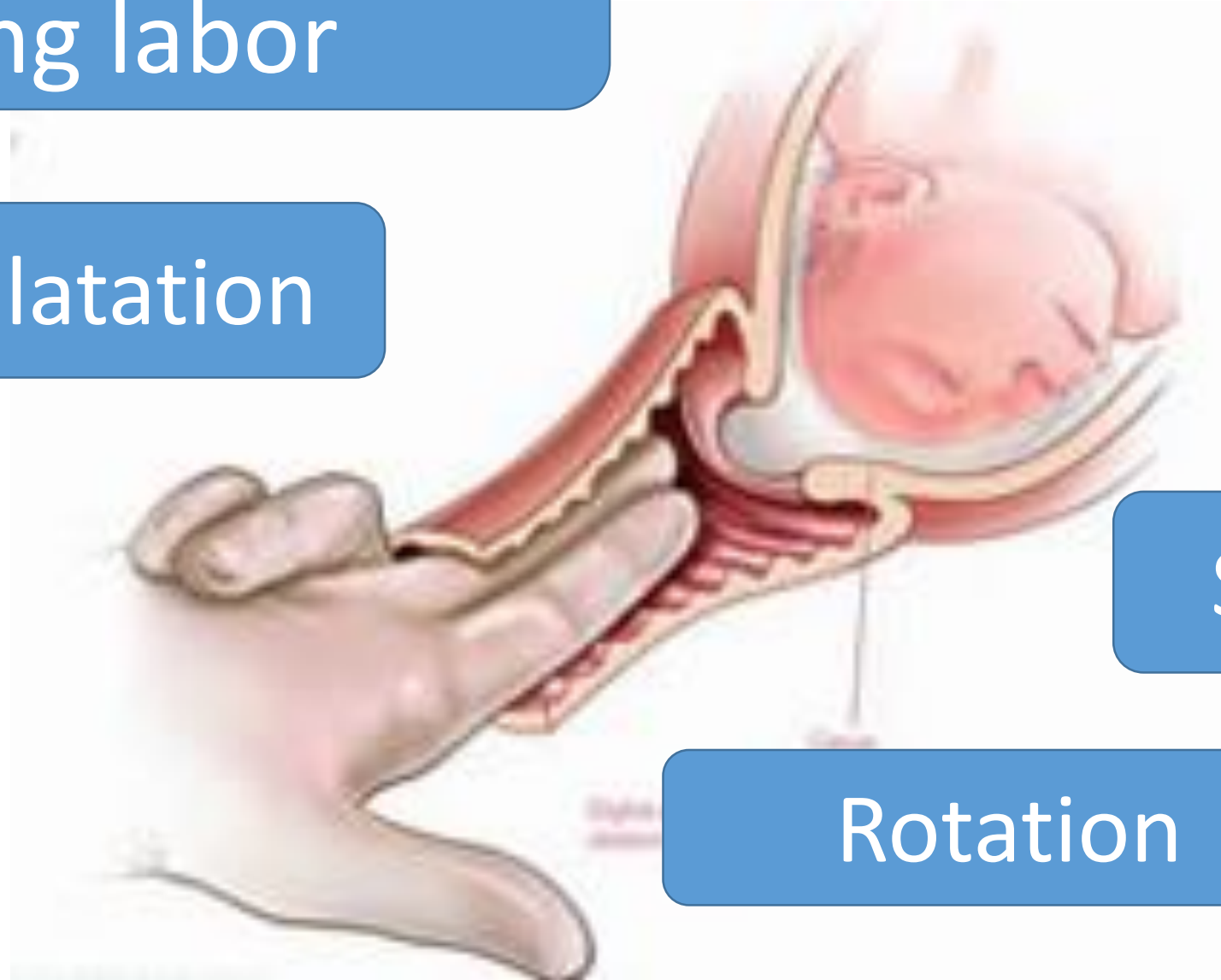
SF height/Leopold maneuver

- <https://www.youtube.com/watch?v=G-6x6Po5orc>
- https://www.youtube.com/watch?v=ImtM_DNtJ84
- <https://www.youtube.com/watch?v=-pkkgBX70FQ>
- <https://www.youtube.com/watch?v=4LDFS9Q8y0g>
- <https://www.youtube.com/watch?v=-pkkgBX70FQ&t=50s>

- <https://www.youtube.com/watch?v=VBE1I4W8x-0&t=26s>
- <https://www.youtube.com/watch?v=oaPdQHkuOyc&t=222s>

Vaginal examination during labor

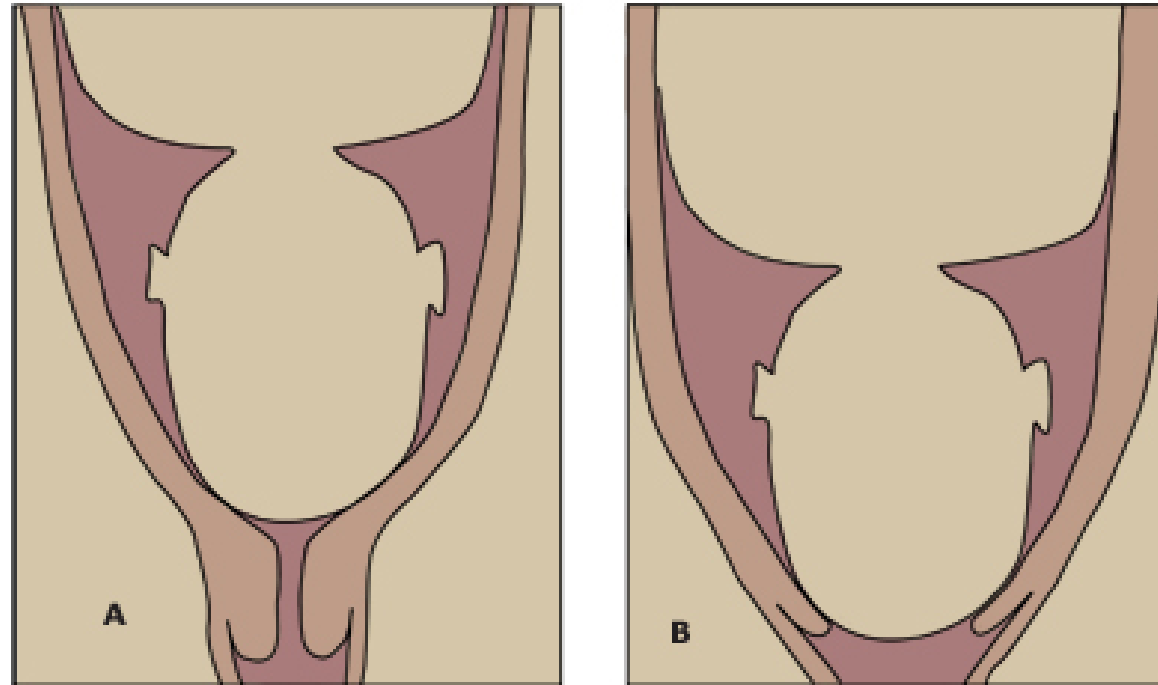
Cervical dilatation



Station

Rotation

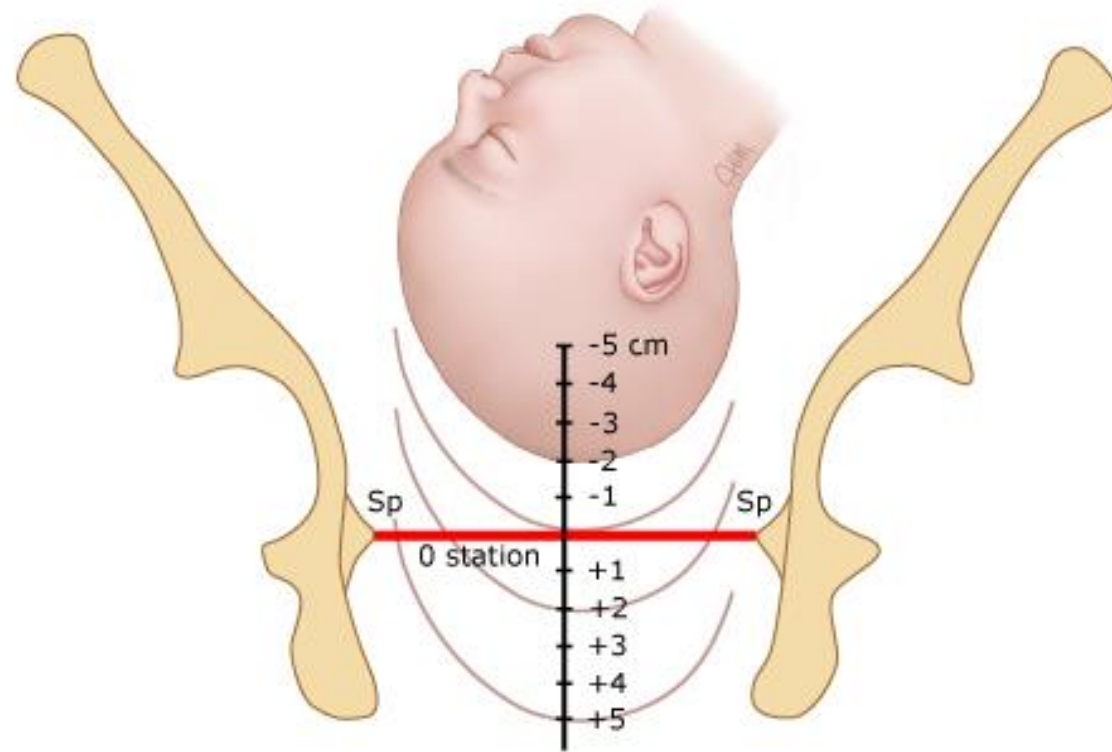
Effacement and dilatation of the cervix



(A) Cervix is uneffaced and minimally dilated.

(B) Cervix is almost completely effaced and dilated.

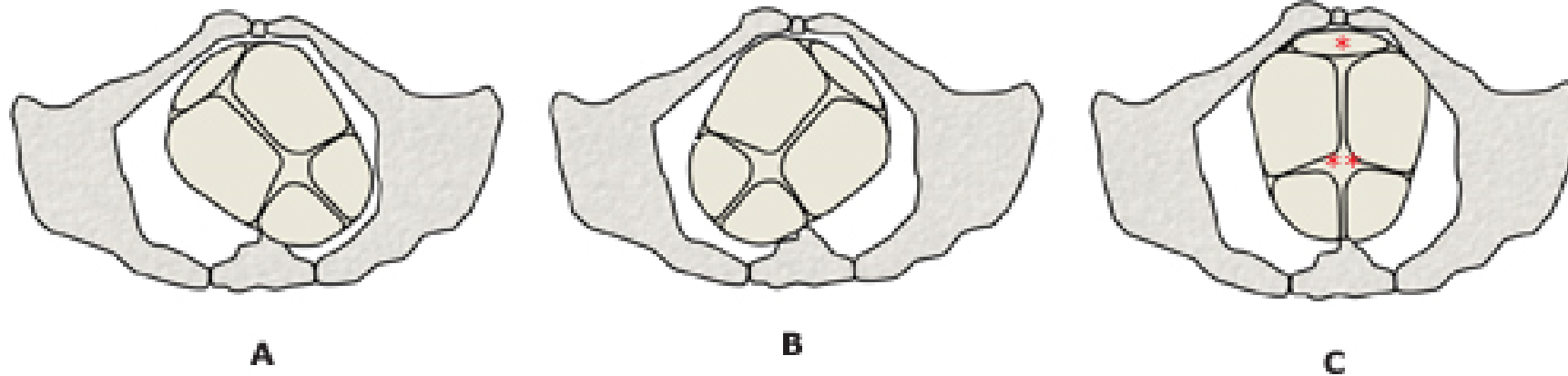
Assessing descent of the fetal head by vaginal examination



The fetus is at -2 station signifying that the leading bony edge of the presenting part is 2 centimeters above the ischial spines. The head is engaged at 0 station.

Sp: ischial spine.

Occiput anterior positions



-
- (A) Right occiput anterior (ROA).
 - (B) Left occiput anterior (LOA)
 - (C) Occiput anterior (OA).

* Posterior fontanel. This is the smaller of the two fontanelles and is at the intersection of the three sutures: the sagittal suture and two lambdoid sutures.

** Anterior fontanel. This large fontanelle is at the intersection of four sutures: the sagittal, frontal, and two coronal sutures.

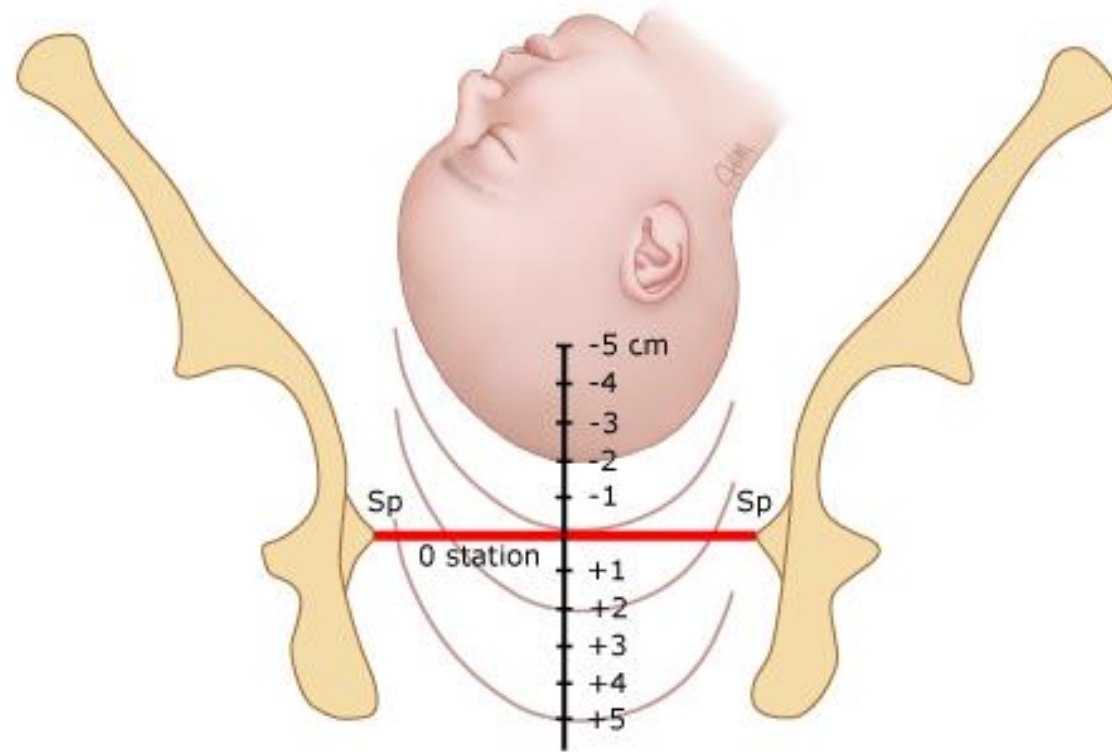
Cervical dilatation

- [https://www.youtube.com/watch?v= 5q0lhYIJJE](https://www.youtube.com/watch?v=5q0lhYIJJE)
- <https://www.youtube.com/watch?v=A-9frYgGm4E>

Descent

- <https://www.youtube.com/watch?v=ze53Ep-gwBQ&t=44s>
- <https://www.youtube.com/watch?v=rula1bC4tsw&t=11s>
- <https://www.youtube.com/watch?v=2kM35XMMiPk>

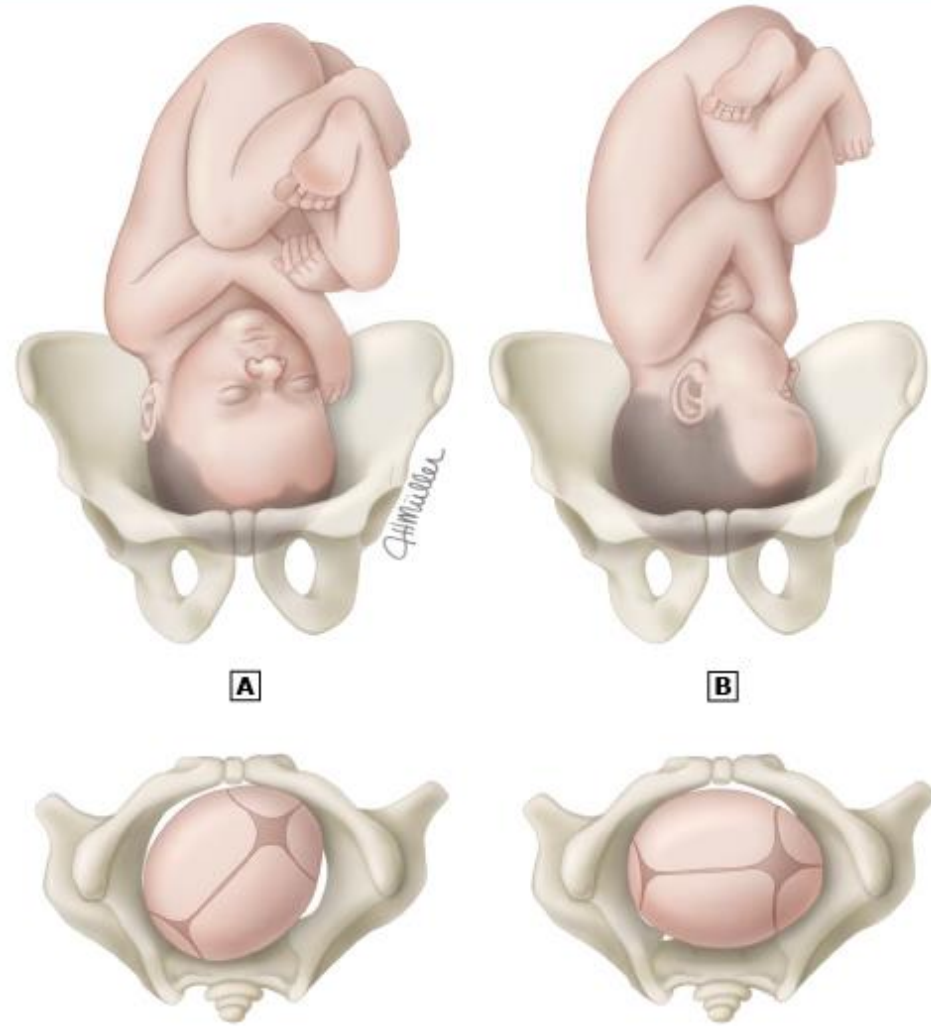
Assessing descent of the fetal head by vaginal examination



The fetus is at -2 station signifying that the leading bony edge of the presenting part is 2 centimeters above the ischial spines. The head is engaged at 0 station.

Sp: ischial spine.

Occiput posterior and occiput transverse positions



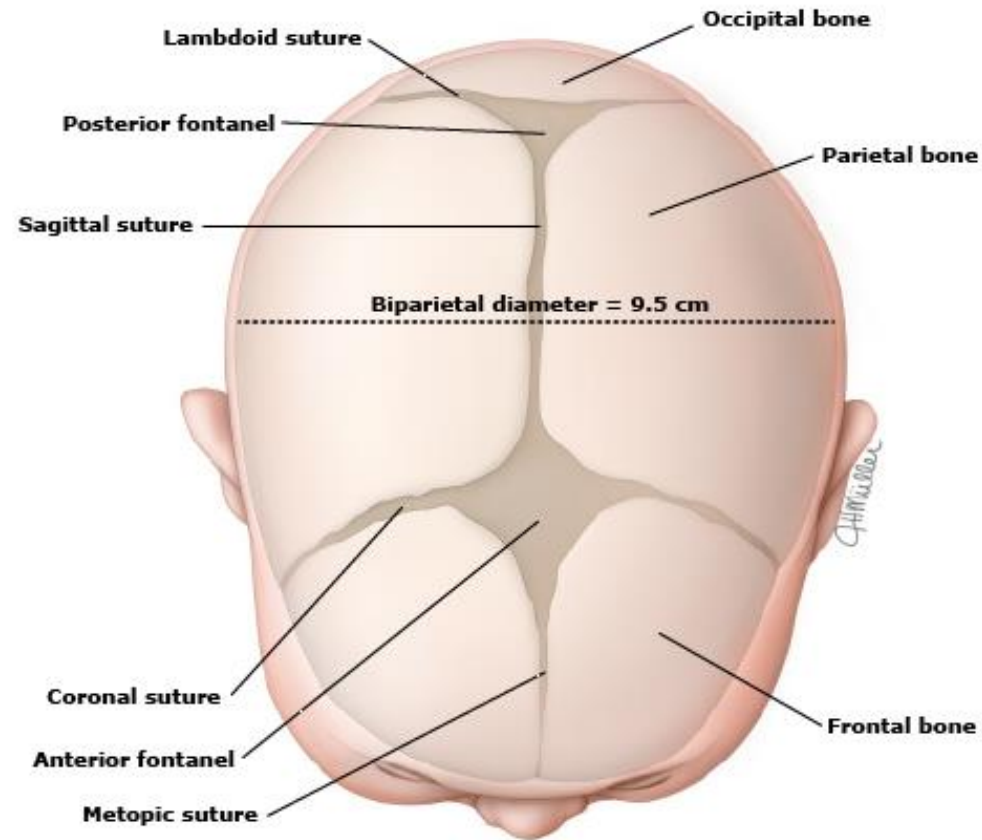
A

B

(A) Right occiput posterior (ROP).
(B) Right occiput transverse (ROT).

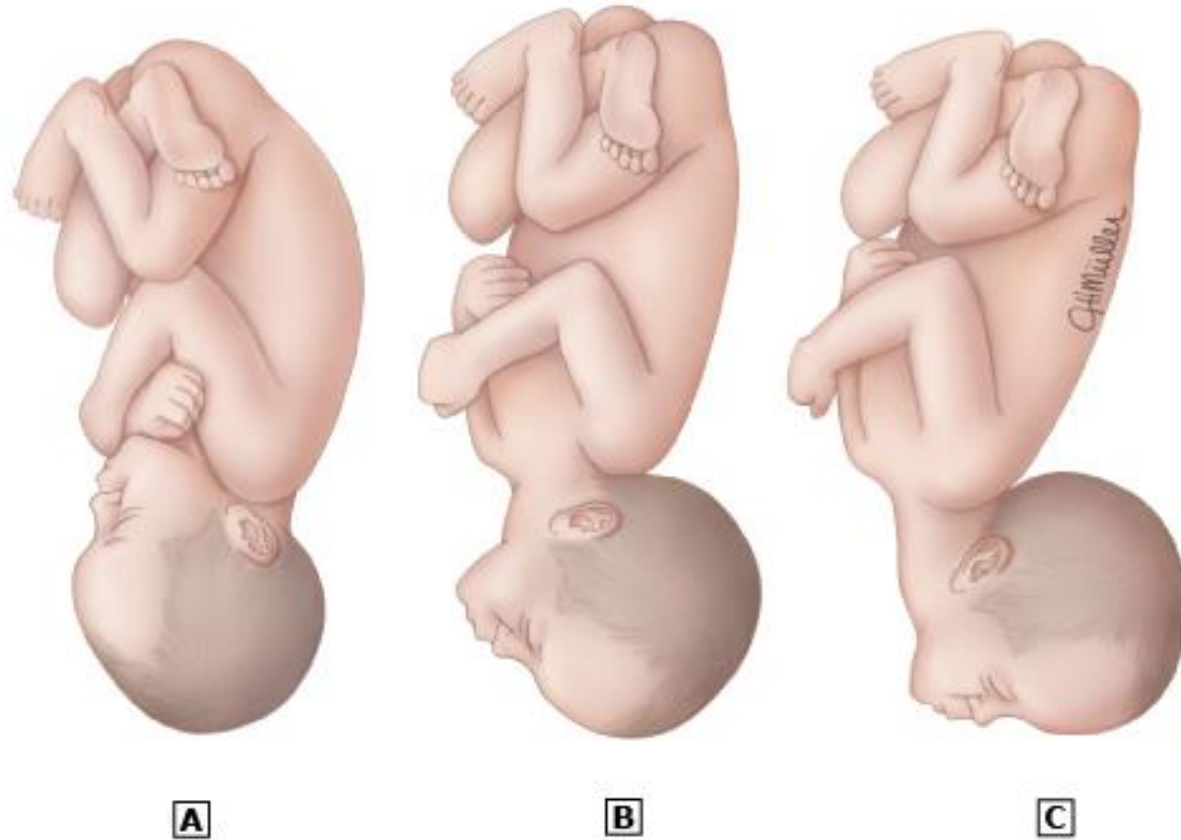
UpToDate®

Fetal head at term showing fontanelles, sutures, and biparietal diameter

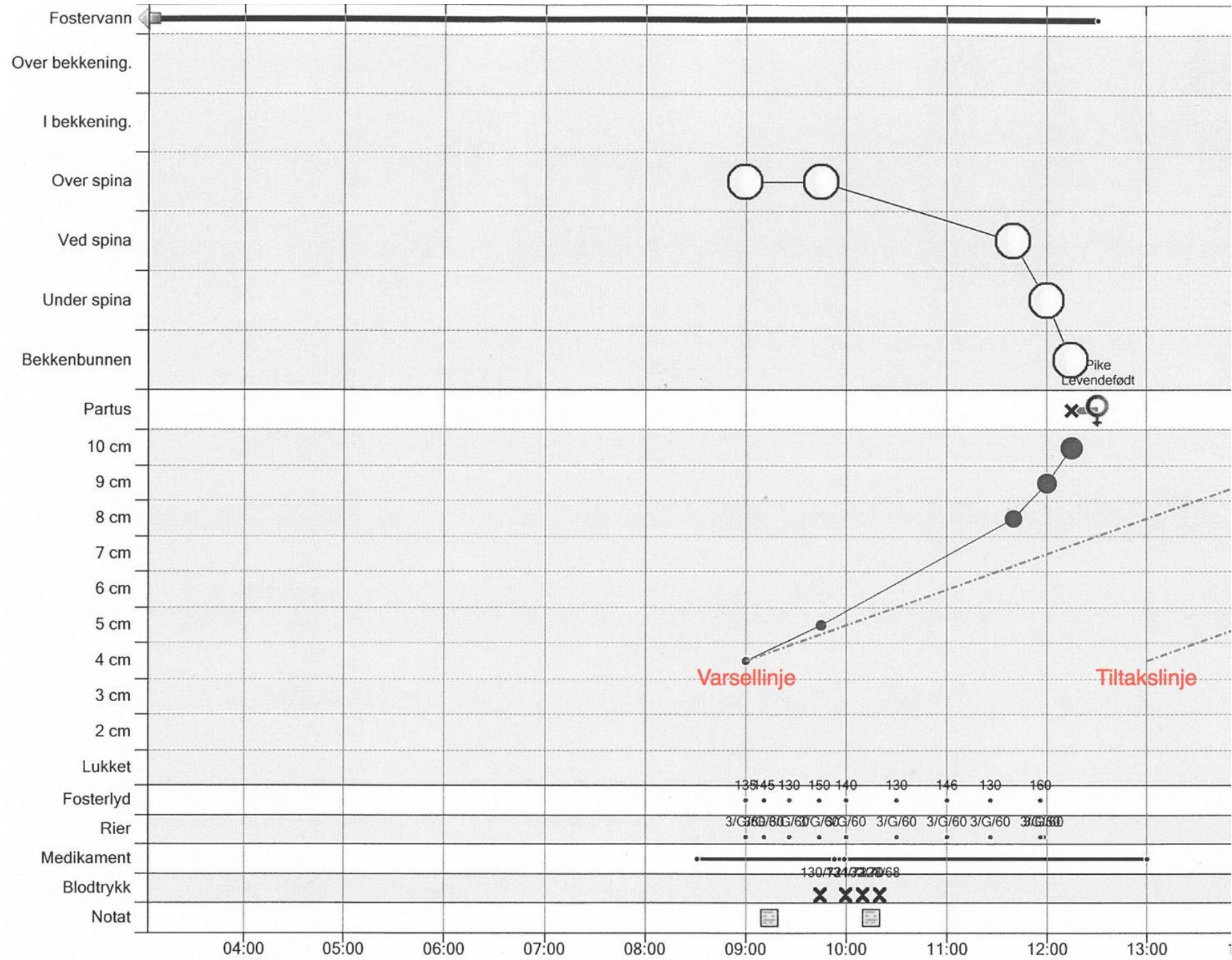


The anterior fontanelle is diamond shaped, at the intersection of four fetal skull bones, and usually the larger fontanelle, whereas the posterior fontanelle is triangular, at the intersection of three fetal skull bones, and usually the smaller fontanelle.

Longitudinal lie, cephalic presentation



Differences in attitude of the fetal body in (A) vertex, (B) brow, and (C) face presentations. A deflexed fetal neck results in a wider presenting cephalic diameter.

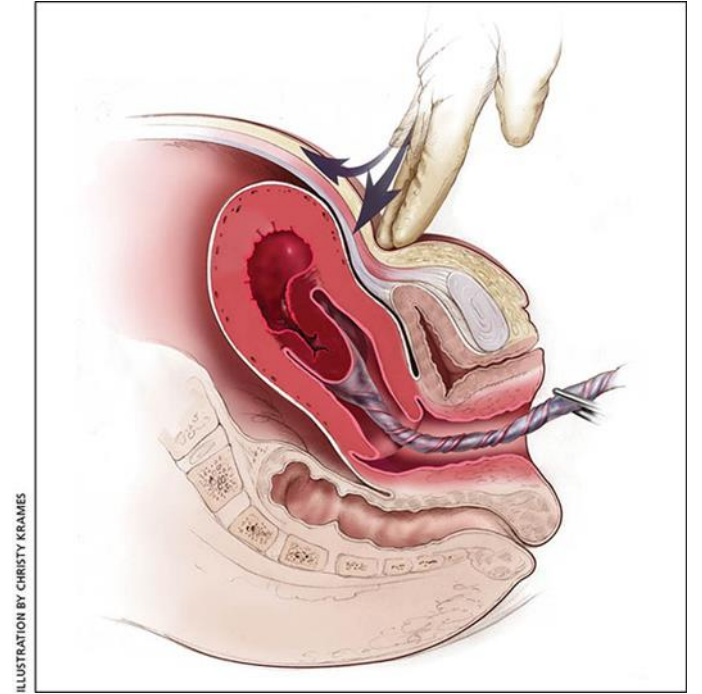


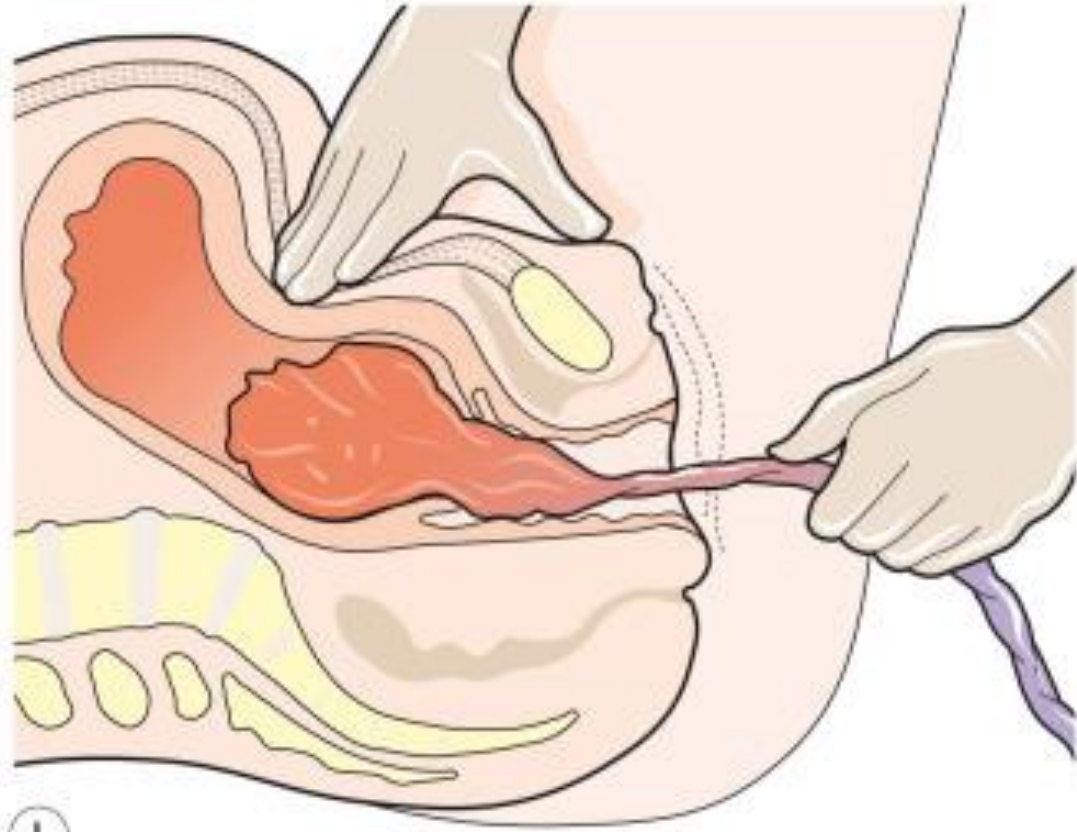
Delivery of baby

- <https://www.youtube.com/watch?v=0k7OoXpT8mM>
- <https://www.youtube.com/watch?v=FecHR7NfGno>
- <https://www.youtube.com/watch?v=duPxBXN4qMg>
- <https://www.youtube.com/watch?v=IScUirHj9Ls>
- <https://www.youtube.com/watch?v=uIWDFErwYGA&t=127s>
- <https://www.youtube.com/watch?v=7zMP2tWIpc8>
- https://www.youtube.com/watch?v=d9pU_6LDVUM

Delivery of placenta

- <https://www.youtube.com/watch?v=WvKSKTahCcss>
- <https://www.youtube.com/watch?v=ilVV7xyJihc>
- <https://www.youtube.com/watch?v=4iHSXADzc98>
- <https://www.youtube.com/watch?v=3P5Etg8ypZ8>
- <https://www.youtube.com/watch?v=DnmHj51UTO4>





Postpartum assessment

- <https://www.youtube.com/watch?v=CCa50OS6jyo>
- <https://www.youtube.com/watch?v=vAQvwAWqx4o&t=50s>

Postpartum hemorrhage

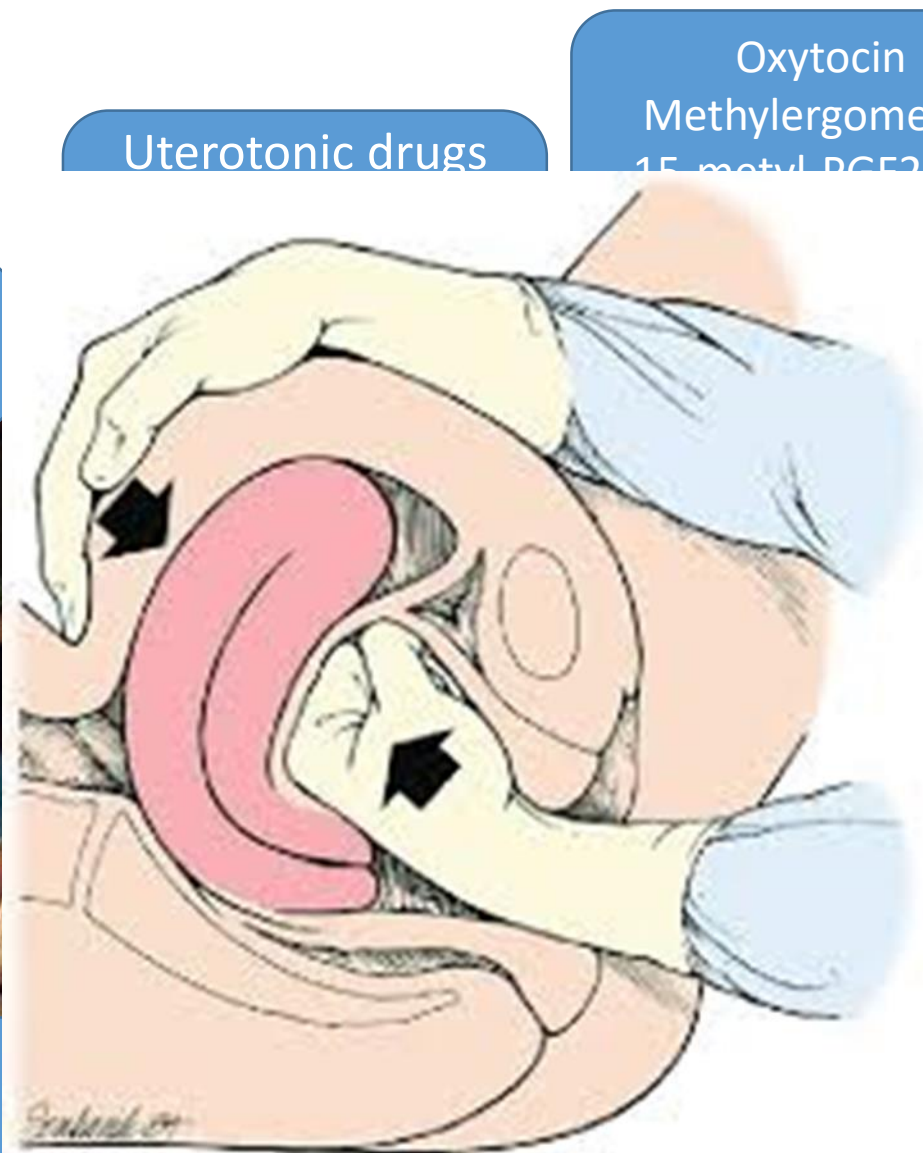
<https://www.youtube.com/watch?v=rr3tsKb7Emw>

- Risk factors

- Antepartum hemorrhage
- Augmented labor
- Chorionamnionitis
- Fetal macrosomia
- Maternal anemia
- Maternal obesity
- Multiple gestation
- Preeclampsia
- Primiparity
- Prolonged labor

- Causes

- Tone, 70 %
- Trauma, 20 %
- Tissue, 10 %
- Thrombin (coagulopathy), 1 %



Uterotonic drugs

Oxytocin
Methylergometrin
15-methyl PGF2 Alfa

I.V. access

Oxygen

Tilt the bed

Monitor vital signs

liver placenta

Uterine masssage

Inspect lacerations

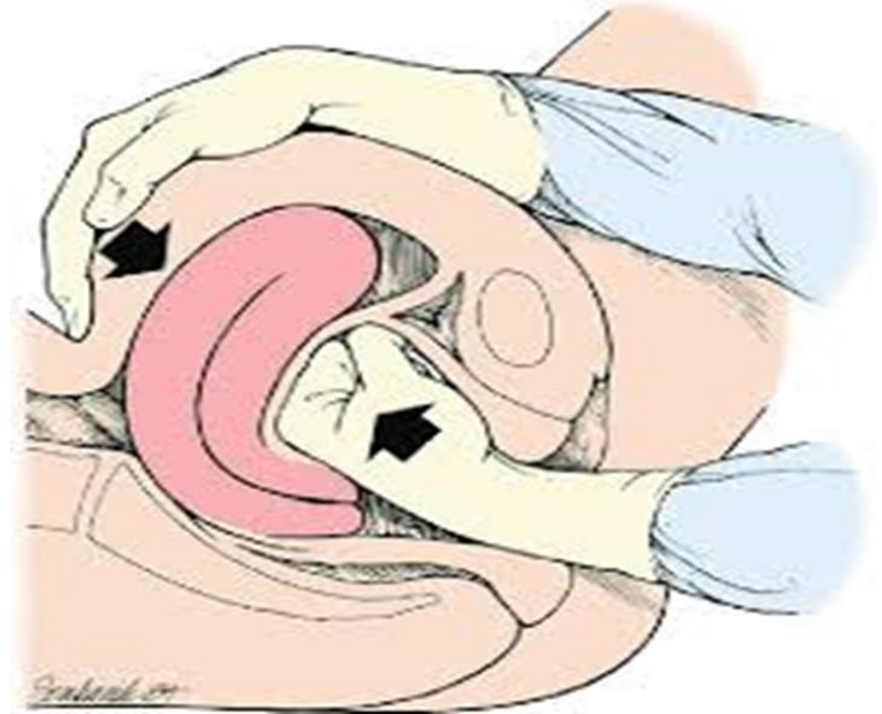
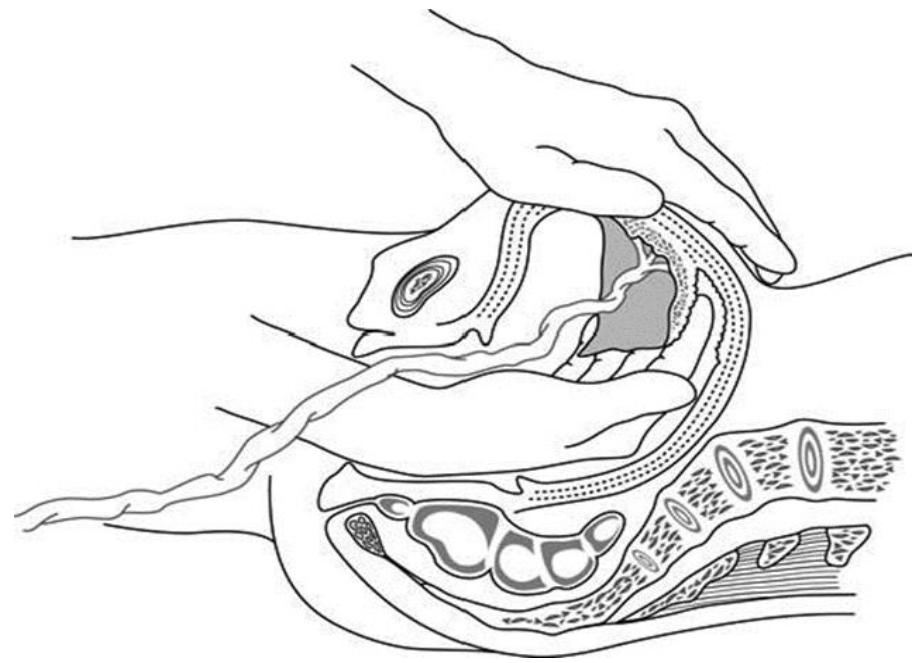
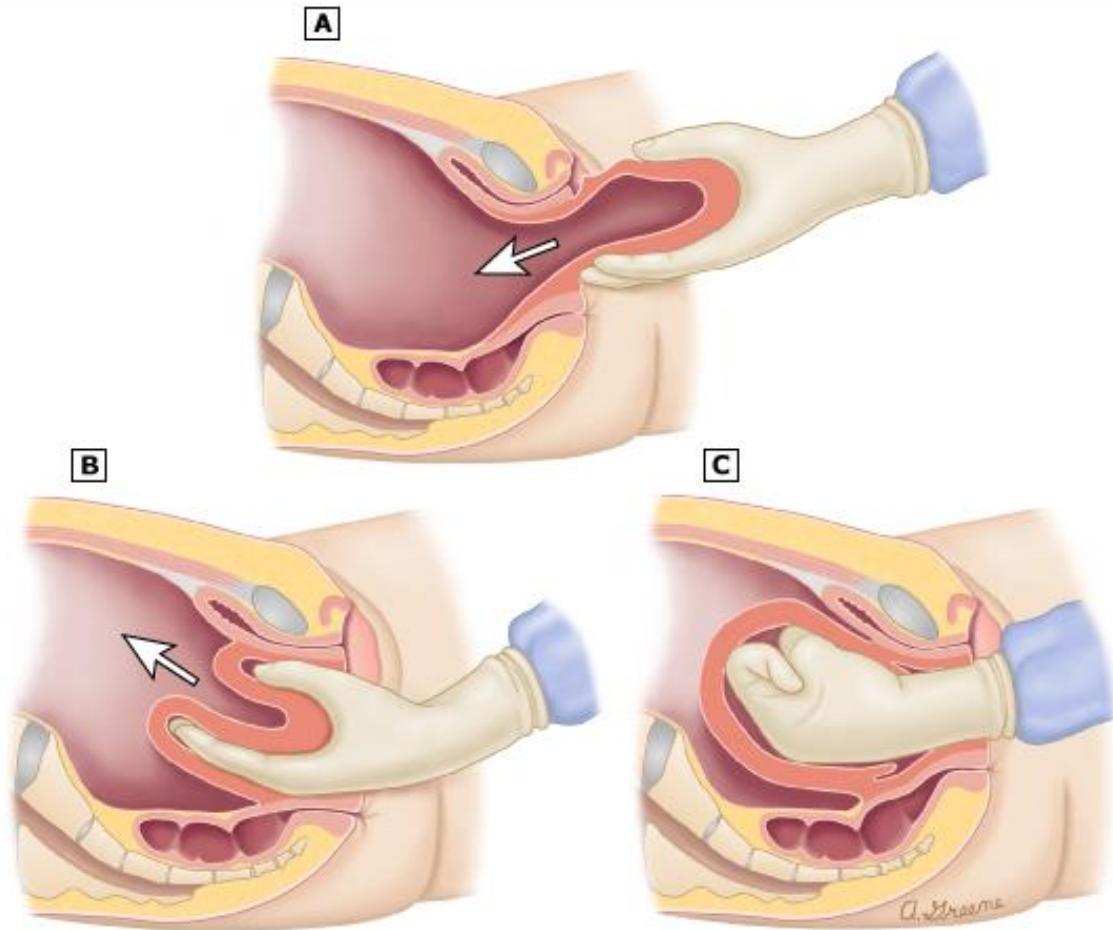
imanuall compression

Puls
RF

Source: E

Empty bladder

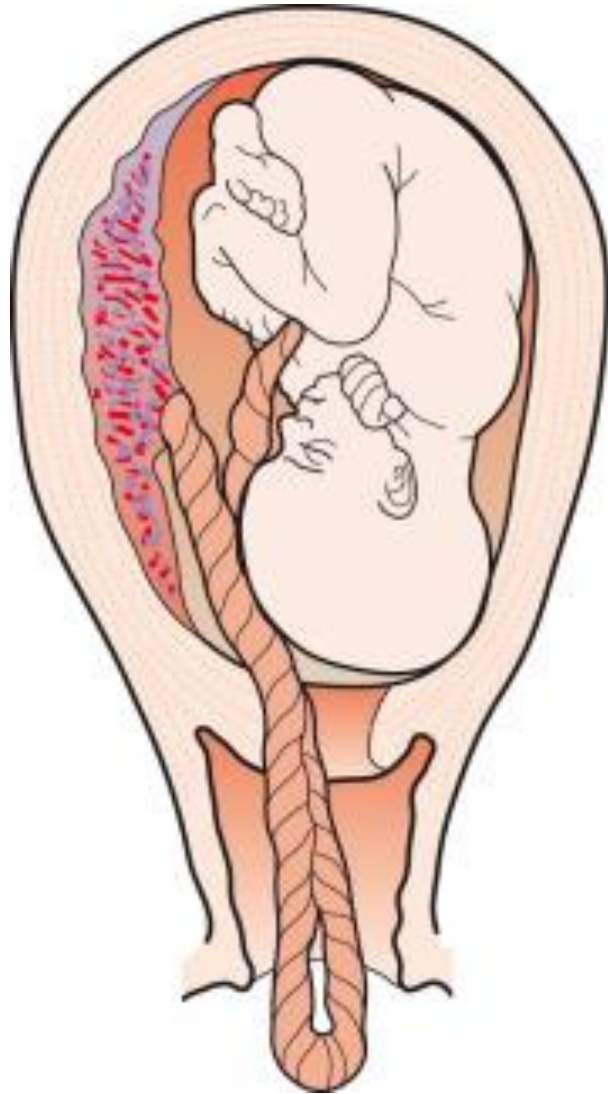
Manual replacement of puerperal uterine inversion



The inverted uterus is replaced by placing a hand inside the vagina and pushing the fundus along the long axis of the vagina toward the umbilicus. If a constriction ring is palpable, pressure should be applied to the part of the fundus nearest the ring to ease it through from bottom to top.

Perineum

- https://www.youtube.com/watch?v=x6_H9A_RNoo
- <https://www.youtube.com/watch?v=m5Vm8ZT24HM>
- <https://www.youtube.com/watch?v=oZW2KSuD800>
- <https://www.youtube.com/watch?v=7AoqPJcCNUs>
- <https://www.youtube.com/watch?v=vAQvwAWqx4o&t=50s>

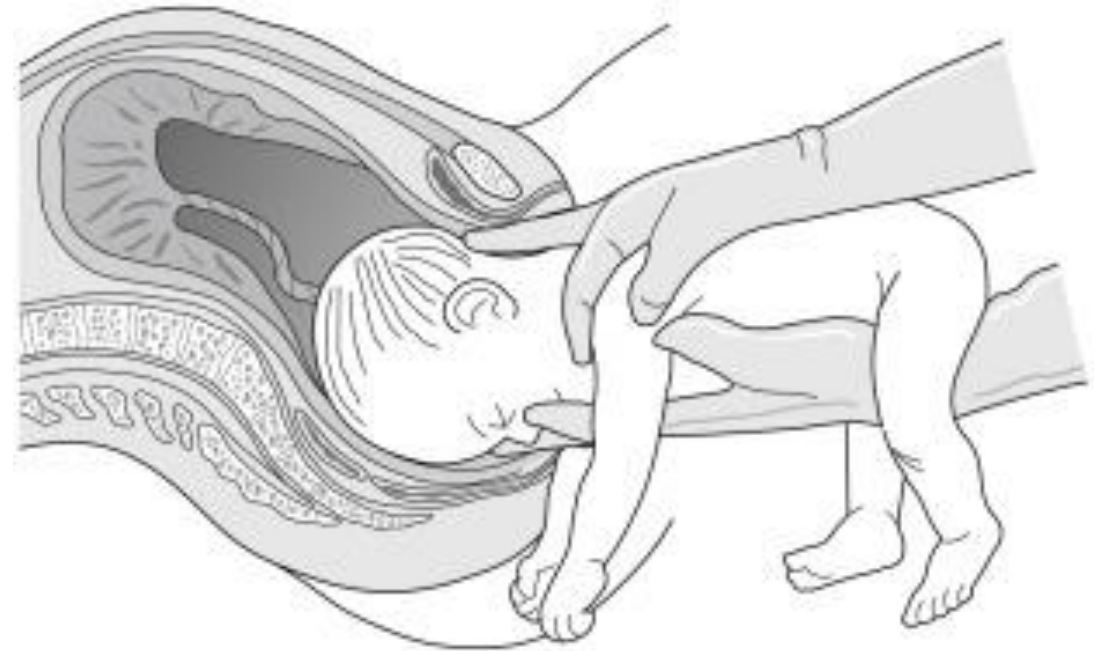
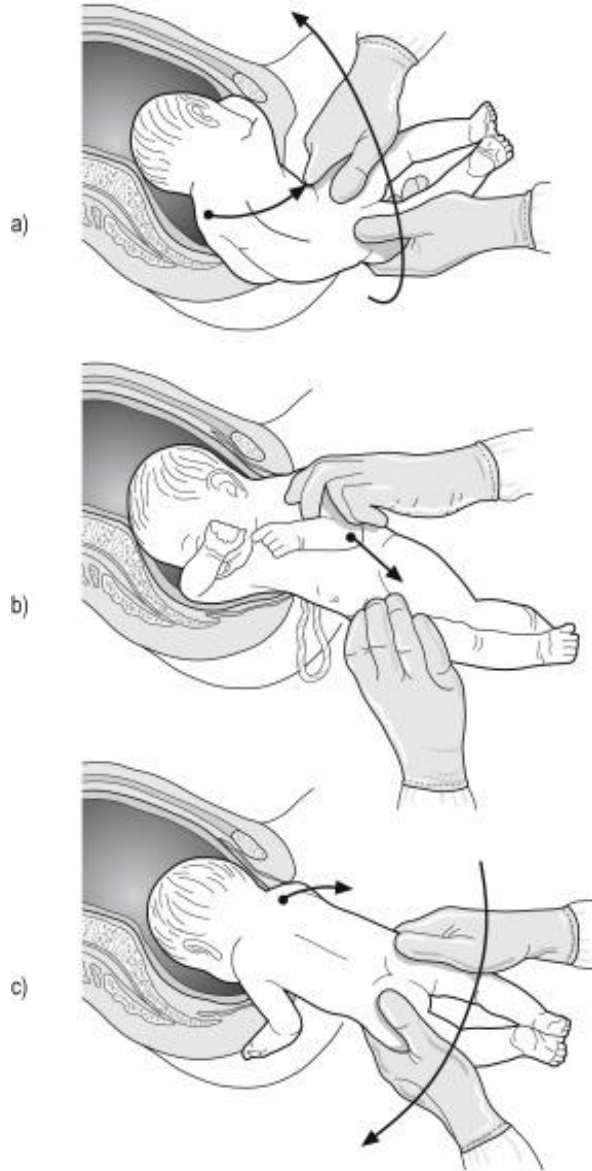


Umbilical cord prolaps: emergency!

1. Turn woman around, bottom up!
2. Reduce pressure on cord digitally.



Breech delivery, classical delivery



<https://www.youtube.com/watch?v=DXXwzdnmy9U&list=PLqoVCUc3-TDR1r6Hf-Q0hC-KG4NzGsYVb>

<https://globalhealthmedia.org/videos/>

- <https://globalhealthmedia.org/portfolio-items/the-vaginal-exam-in-labor/?portfolioCats=191%2C94%2C13%2C23%2C65>
- <https://globalhealthmedia.org/portfolio-items/initial-assessment-in-labor/?portfolioCats=191%2C94%2C13%2C23%2C65>
- <https://globalhealthmedia.org/portfolio-items/managing-the-second-stage-of-labor/?portfolioCats=191%2C94%2C13%2C23%2C65>
- <https://globalhealthmedia.org/portfolio-items/birthing-the-baby/?portfolioCats=191%2C94%2C13%2C23%2C65>
- <https://globalhealthmedia.org/portfolio-items/immediate-care-after-birth/?portfolioCats=191%2C94%2C13%2C23%2C65>
- <https://globalhealthmedia.org/portfolio-items/managing-the-third-stage-of-labor/?portfolioCats=191%2C94%2C13%2C23%2C65>
- <https://globalhealthmedia.org/portfolio-items/examining-the-placenta/?portfolioCats=191%2C94%2C13%2C23%2C65>
- <https://globalhealthmedia.org/portfolio-items/the-birth/?portfolioCats=191%2C94%2C13%2C23%2C65>