

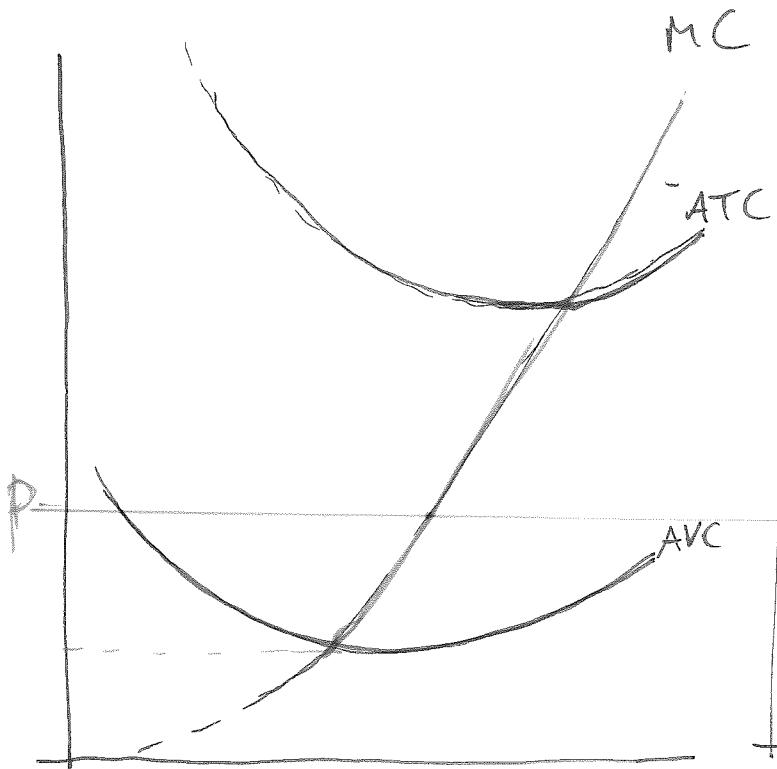
$p < p^{\min}$   $p < AVC$  for alle  $x \rightarrow$  vælger  $x=0$

$p > p^{\min}$  Vælger  $x$  slik at  $p=MC$

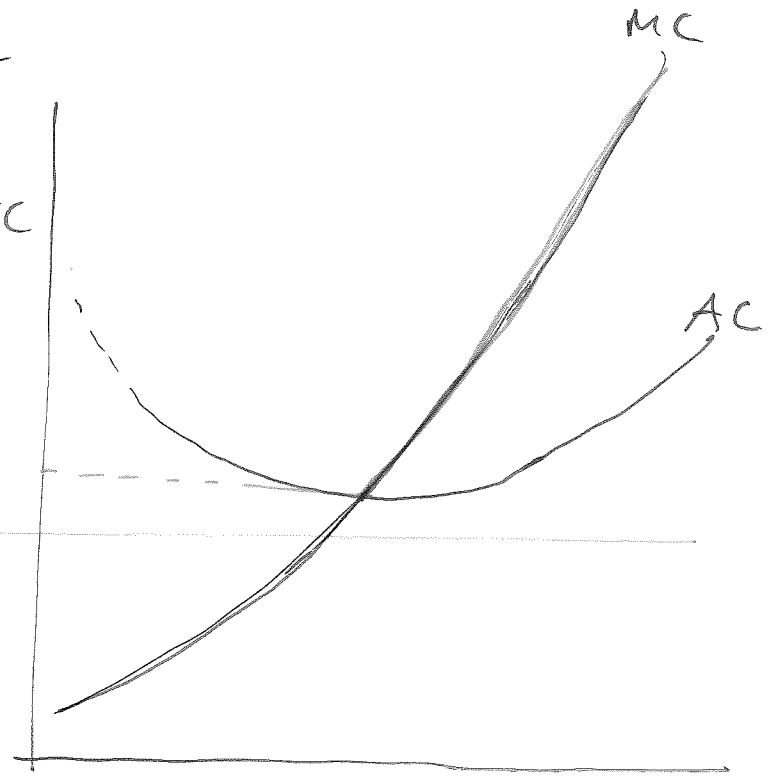
$p^{\min} < p < p^{\pi}$   $p > AVC$  ~~so~~, men  $p < ATC$

$p \geq p^{\pi} \rightarrow p \geq ATC \rightarrow$  Bedriften går med overskud (profit)

Etableret



Nykommer

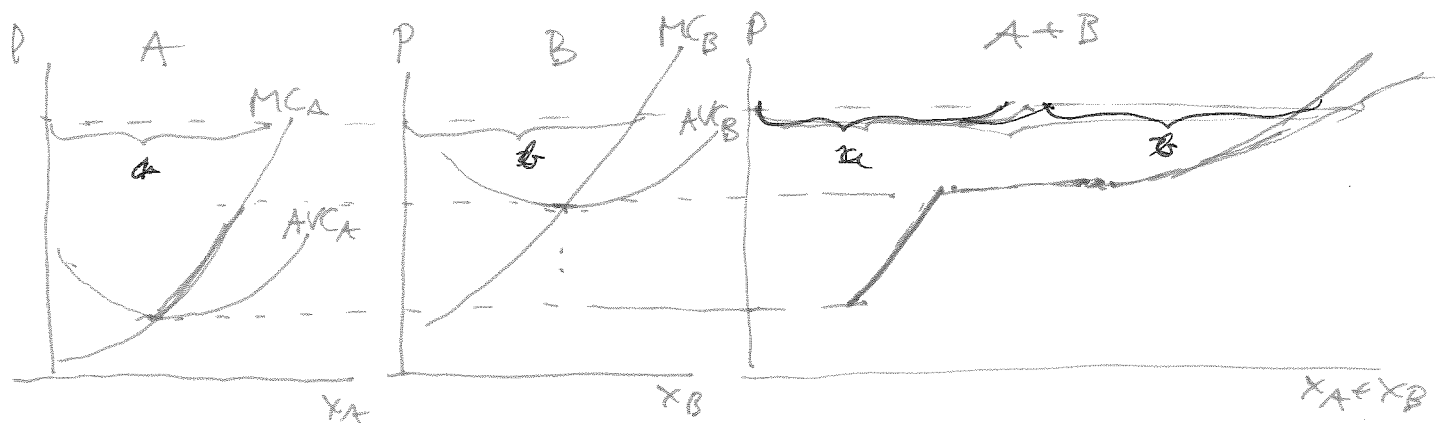


For nykommeren er alle kostnader variable  
dis. for etablering

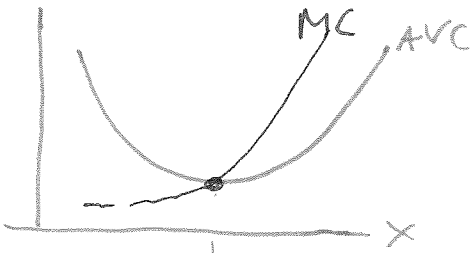
Markedets tilbudskurve:

Før enhver  $p$  summerer vi tilbuddet fra de enkelte bedrifterne

slik:

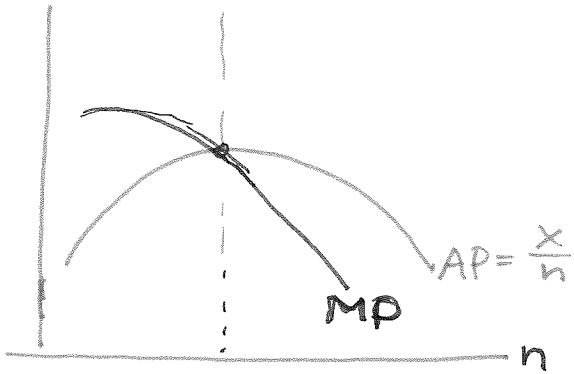


Når AVC ser slik ut . .



$$AVC = \frac{wn}{x} = \frac{w}{\frac{x}{n}} \quad n = \text{sysselvakte}$$

Gjennomsnittsproduktiviteten



ganger MP og AP med P for å få "value of marginal product" (marginalavkastning) og gjennomsnittsalter:

