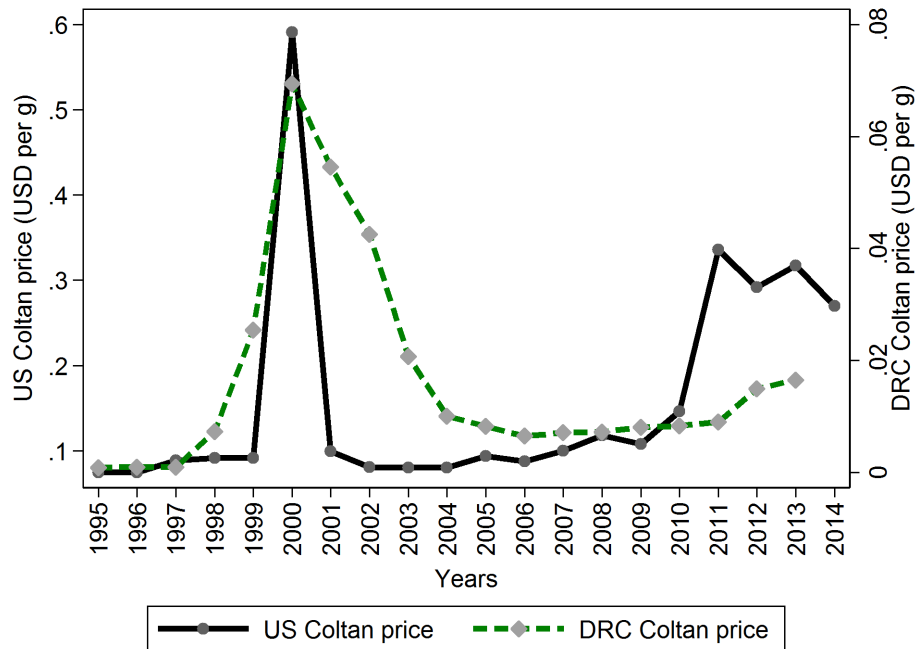


PANEL A: Price of coltan



PANEL B: Price of gold

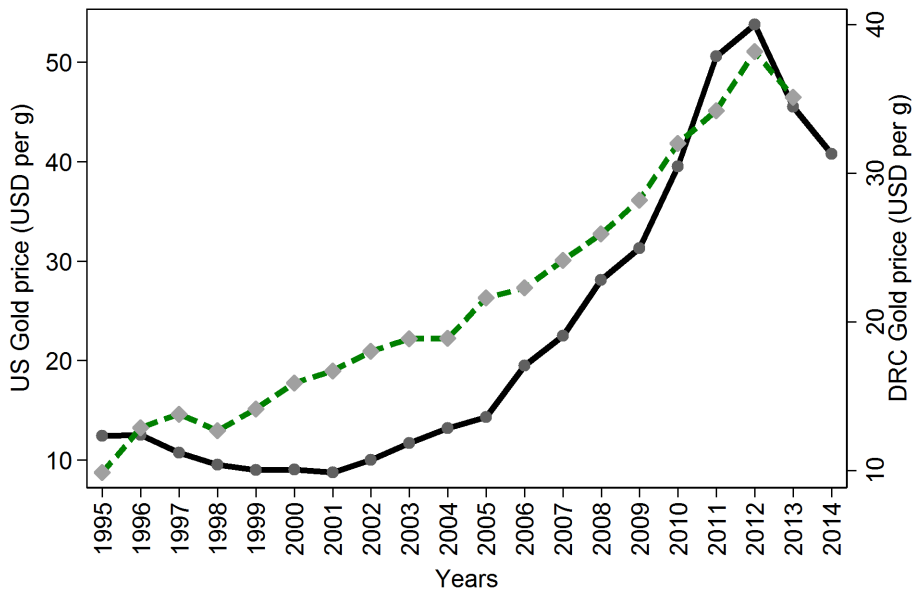
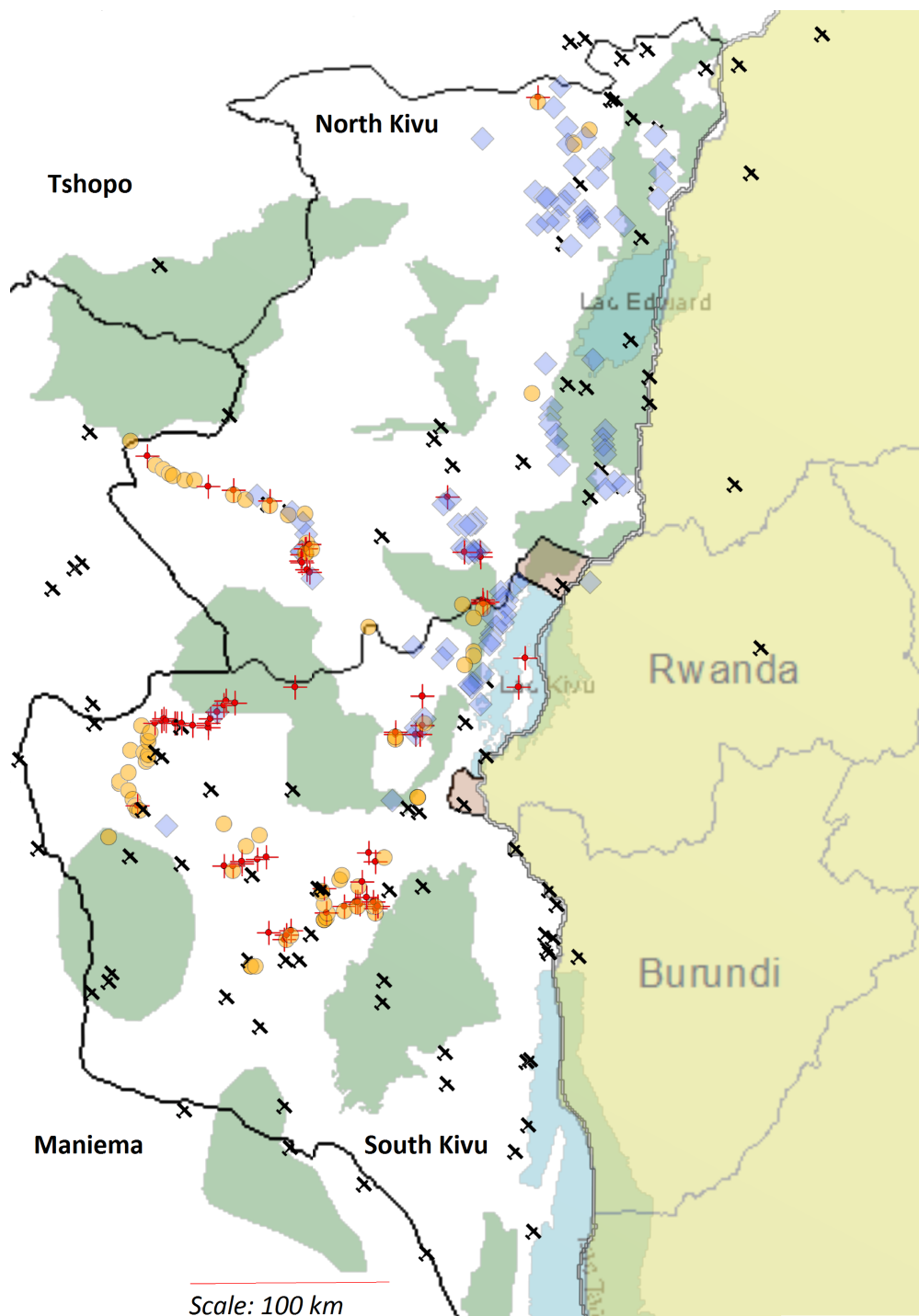
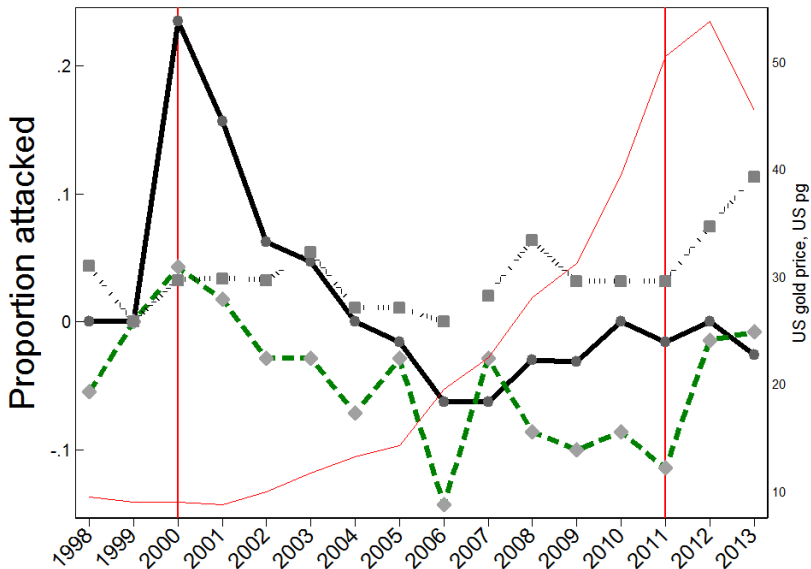


Figure 3: Support villages in the sample

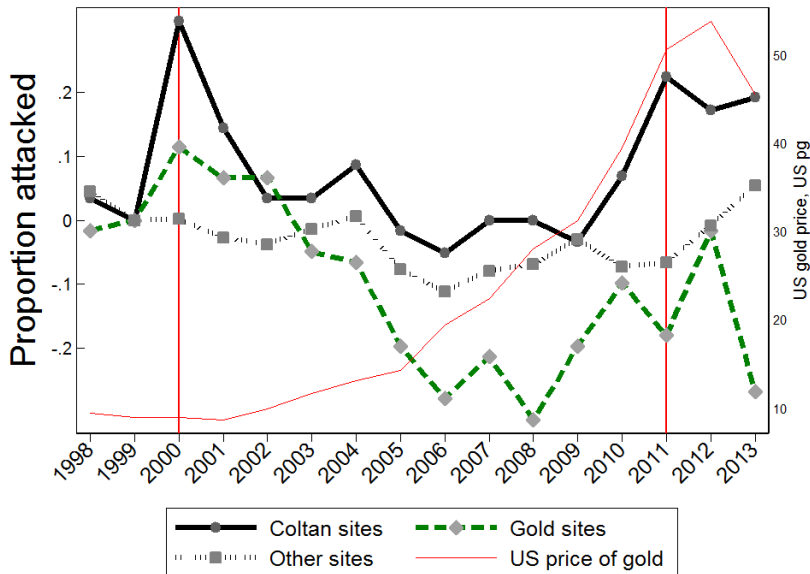


Notes: This map presents the location of the support villages. Support villages with at least one coltan mine are marked with a circle and cross (red). Support villages with at least one gold mine are marked with a circle (golden). Support villages with no gold or coltan mines, are marked with a diamond (purple) — the economy of such municipalities is based on the following cash crops: coffee, cacao, beans, or on other minerals. Planes indicate local airstrips. Some mines were insecure for the surveyors to visit, and as a result, transport prices to mines were often exorbitant. Thus, in each support village, a team of two surveyors worked during 7 days to reconstruct the year level history of the support village, but also of the mining sites associated to that support village.

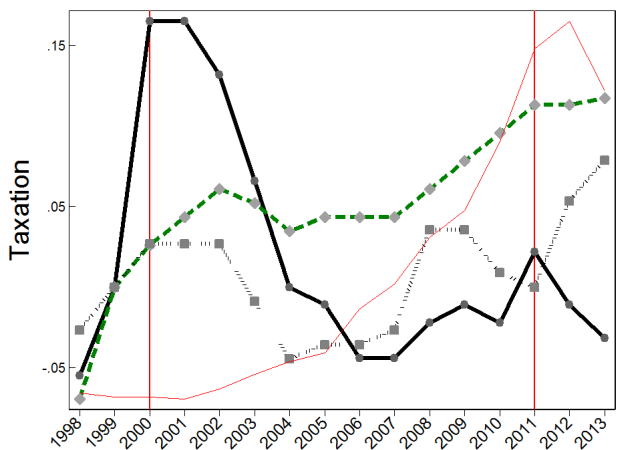
PANEL A: mines (n=411)



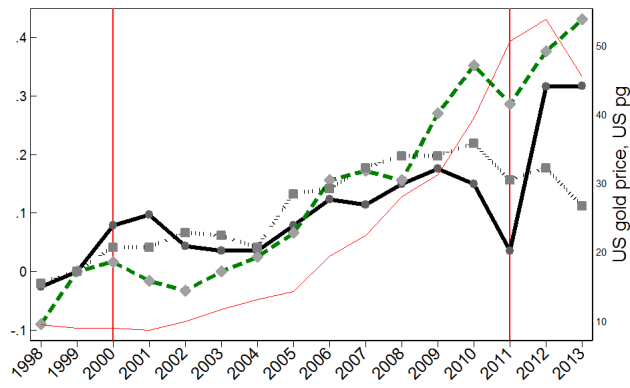
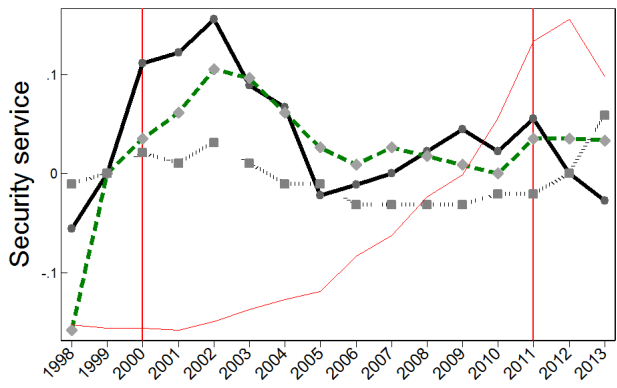
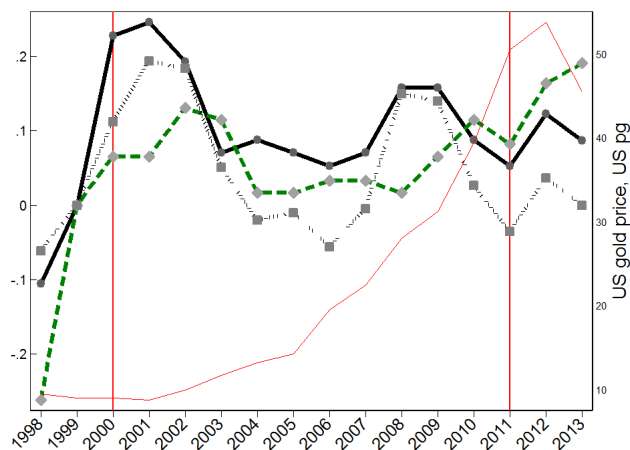
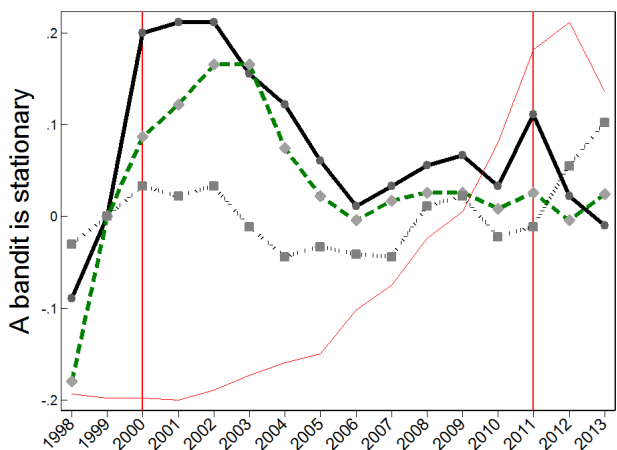
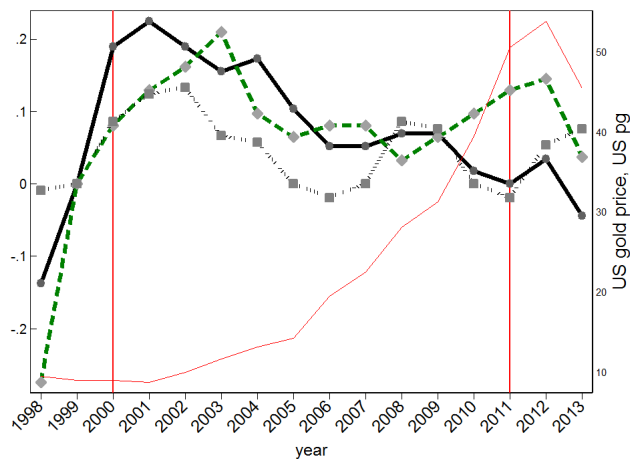
PANEL B: support village (n=239)



PANEL A: mines (n=411)



PANEL B: support village (n=239)



PANEL A: Mines (n=411)

VARIABLES	(1) Output Taxation	(2) Labor Taxation	(3) Stationary bandit	(4) Security Service	(5) Extensive Index
Coltan(i) X pc(t)	0.10*** (0.02)	0.04** (0.02)	0.08*** (0.02)	0.06*** (0.02)	0.23*** (0.05)
Gold(i) X pg(t)	-0.05*** (0.02)	0.04** (0.02)	0.01 (0.02)	0.01 (0.02)	0.00 (0.05)
Constant	0.45*** (0.12)	0.27** (0.12)	-0.10 (0.17)	-0.17 (0.15)	-0.62* (0.36)
Observations	3,655	3,742	3,702	3,791	3,517
R-squared	0.76	0.75	0.65	0.65	0.68

PANEL B: Support village (n=239)

VARIABLES	(1) Village Taxation	(2) Stationary bandit	(3) Security Service	(4) Extensive Index
Coltan(i) X pc(t)	0.01 (0.03)	0.03 (0.03)	-0.00 (0.03)	0.03 (0.05)
Gold(i) X pg(t)	0.07*** (0.03)	0.08*** (0.03)	0.09*** (0.03)	0.21*** (0.05)
Constant	-0.19 (0.24)	0.01 (0.26)	0.07 (0.24)	-1.34*** (0.50)
Observations	3,818	3,706	3,706	3,706
R-squared	0.54	0.49	0.43	0.54